



Cuisinart CPT-140BK Circuit Board Replacement

This guide will detail the steps on how to replace Cuisinart CPT-140BK toaster circuit board .

Written By: Liya Zulfiquar



INTRODUCTION


This guide will explain how to replace Cuisinart CPT-140BK toaster circuit board. It instructs through the process of disassembly to prevent damage on display cables and panels.

TOOLS:

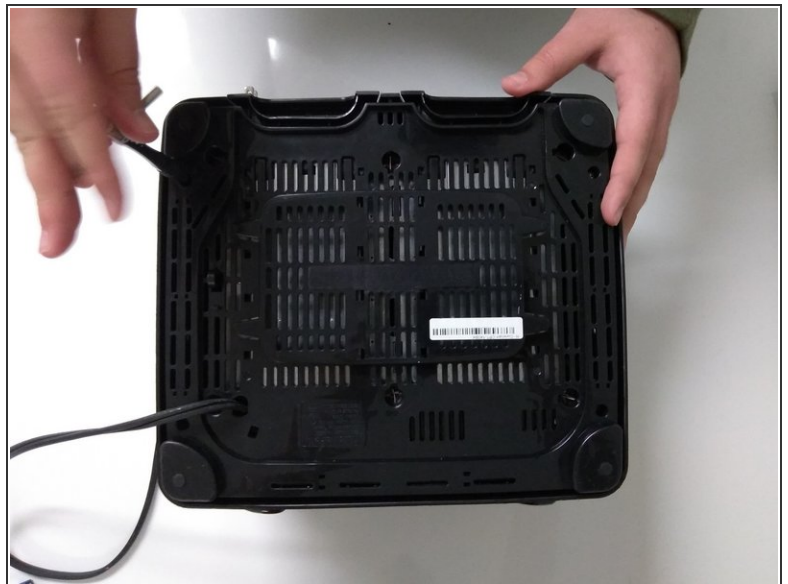
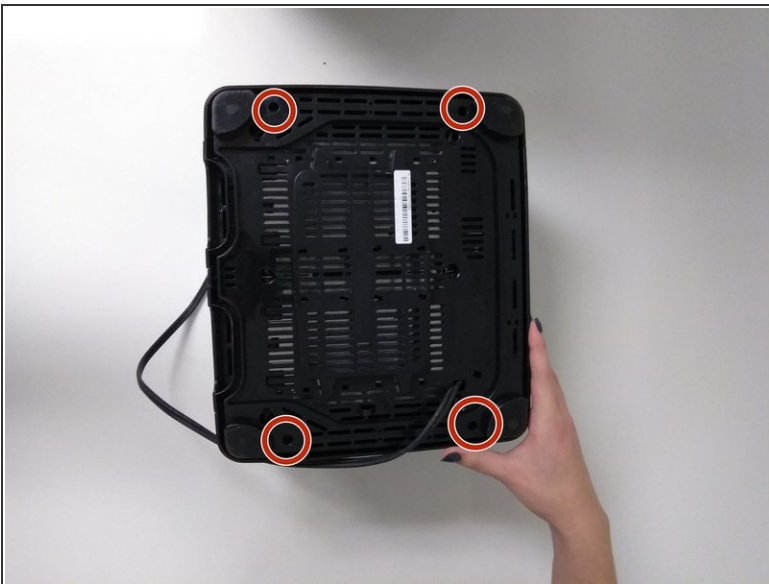
- [Phillips #2 Screwdriver](#) (1)
-

Step 1 — Circuit Board



 Unplug the toaster before disassembly.

Step 2



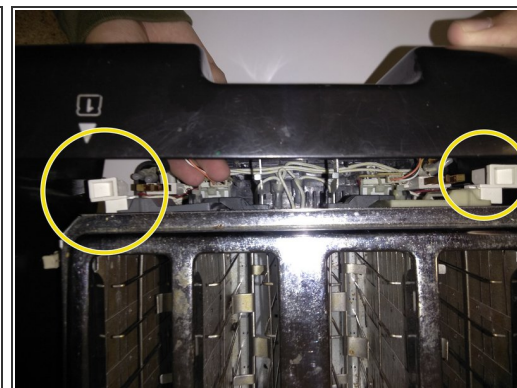
- Turn the toaster upside down.
- Unscrew all 4mm screws using Phillips #2 screwdriver.

Step 3



- Turn the toaster right side up.
- ⚠ Lift up the front cover carefully because the cables can be damaged.
- Pull out the toaster lever knobs by pulling it away from the toaster before removing the top cover.

Step 4



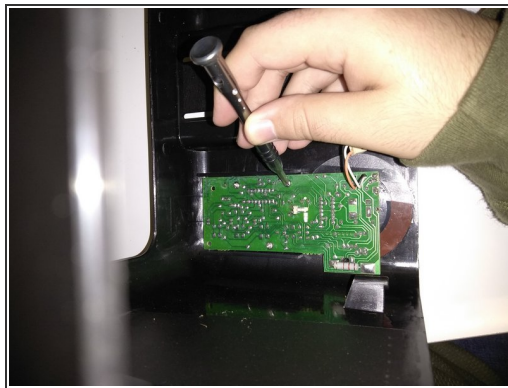
- Detach the cable that connects the toaster to the circuit board, in both control panels.

Step 5



- Carefully lift up the top cover.

Step 6



 The circuit board is located inside the front cover.

- Unscrew total of six 4mm screws that attach each circuit board to the top cover, using Phillips #2 screwdriver.
- Remove and replace the circuit board.

To reassemble your device, follow these instructions in reverse order.