



ASUS X550LB-DS71 Fan Replacement

This guide will show the steps needed to replace the fan in ASUS X550LB-DS71.

Written By: Nathan Dyer



INTRODUCTION

The fan helps get rid of the excess heat in the laptop. A damaged fan can cause overheating and poor performance. This guide explains how to replace it.

TOOLS:

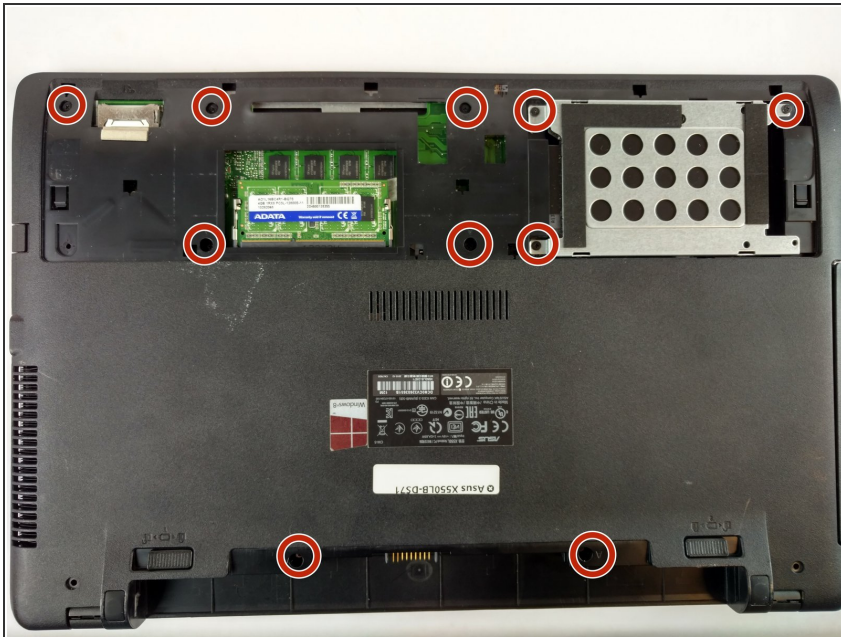
- [iFixit Opening Tools](#) (1)
 - [Phillips #0 Screwdriver](#) (1)
 - [Phillips #1 Screwdriver](#) (1)
 - [Tweezers](#) (1)
-

Step 1 — Fan



- ❗ Make sure to switch off your laptop before starting.
- Place the laptop on a flat surface with the bottom side facing upwards.
- Using the Phillips #1 Screwdriver, remove the four 4mm screws in the back panel.
- Using both hands, slide the back panel away from the laptop horizontally.

Step 2



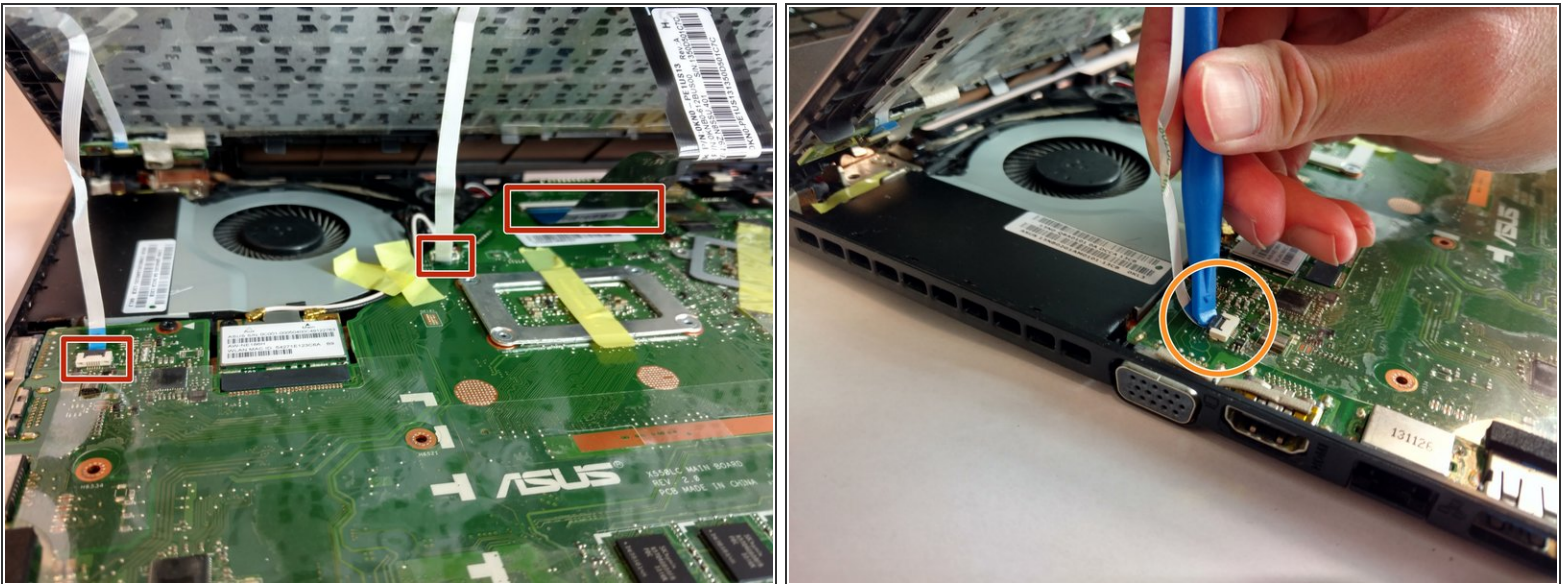
- Using the Phillips #0 Screwdriver, remove the ten 2mm screws at the marked locations.
- ❗ At this point, it is advised to disconnect the hard drive from the motherboard.

Step 3



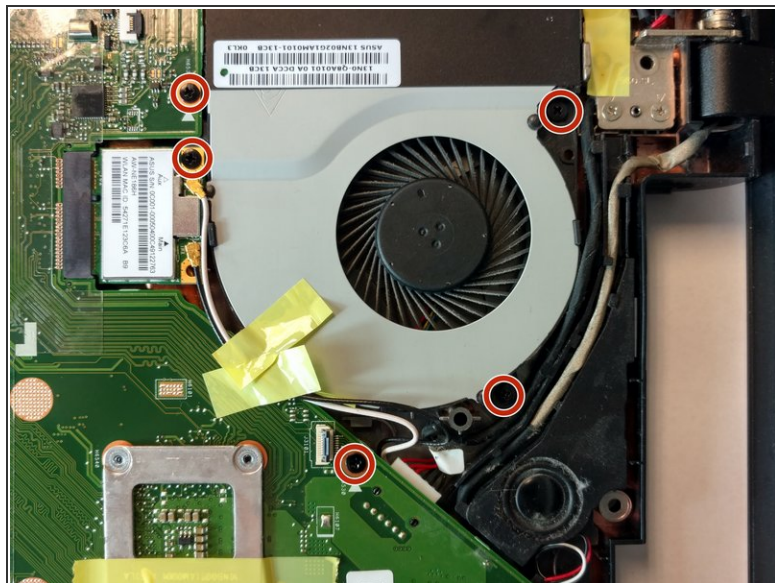
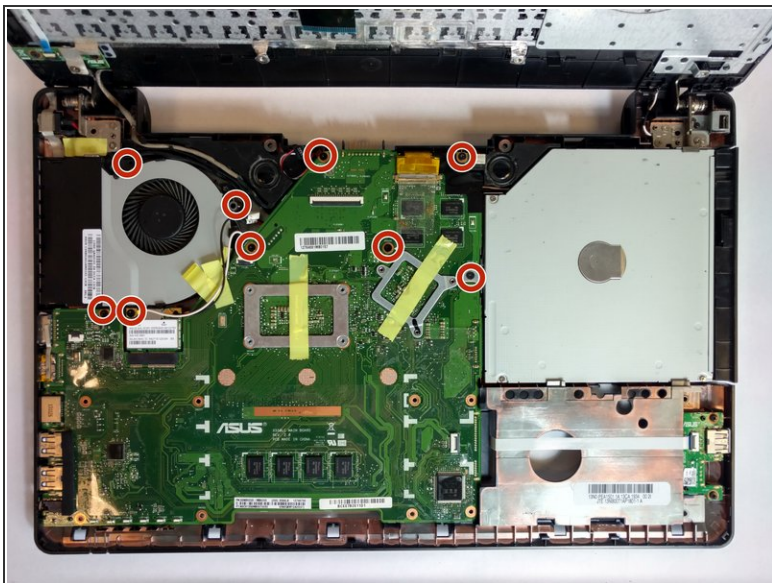
- Using the plastic opening tool, open the back cover of the laptop.
- ⓘ It is recommended that you start from a corner and run the tool along the edge of the cover.
- ⚠ Be careful not to bend or crack the cover.

Step 4



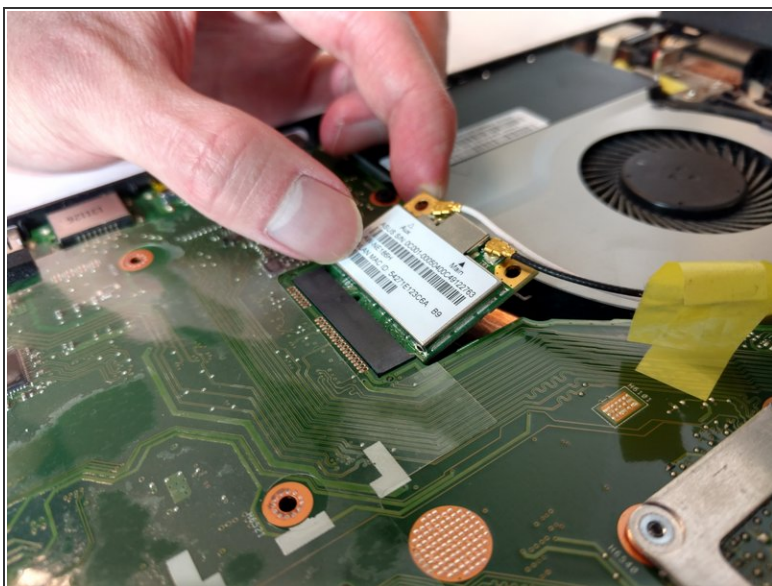
- Locate the three ribbon connectors.
- Using the plastic opening tool, flip up all three gray tabs and remove the ribbon connectors from the motherboard.
- ⚠ Once the tabs are released, the ribbons will be easy to remove. Do not pull on the ribbons.

Step 5



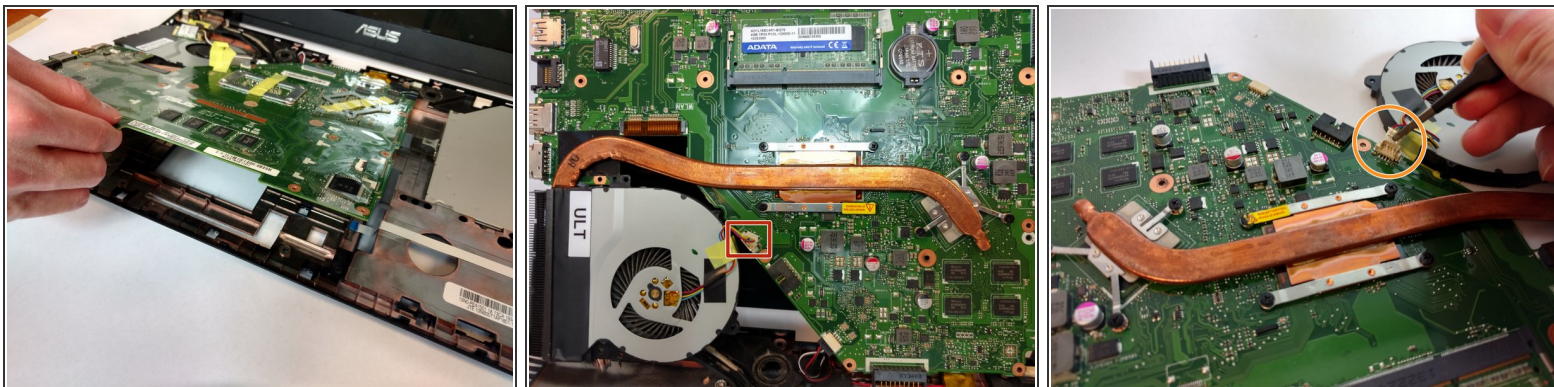
- Using the Phillips #0 Screwdriver, remove the nine 2mm screws at the marked locations.

Step 6



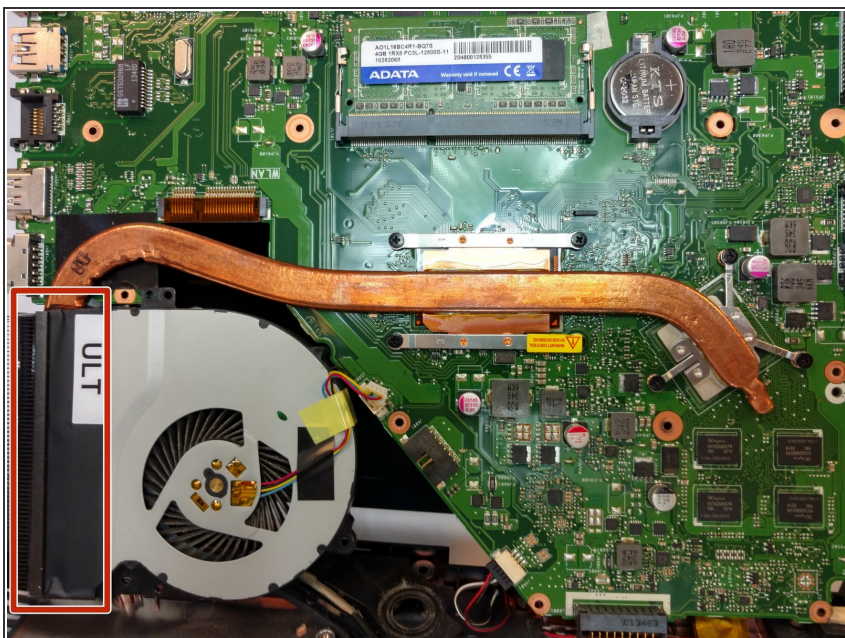
- Disconnect the WLAN Card from the motherboard by pulling the connector upwards.
- Disconnect the optical drive from the motherboard by sliding it to the right.

Step 7



- Flip the motherboard to show the underside.
- Locate the square fan connection attached to the motherboard.
- Disconnect it using the tweezers (blunt).

Step 8



- Remove the black tape from the fan as seen in the marked location.
- ⓘ At this point, the fan is now disconnected from the motherboard.

To reassemble your device, follow these instructions in reverse order.