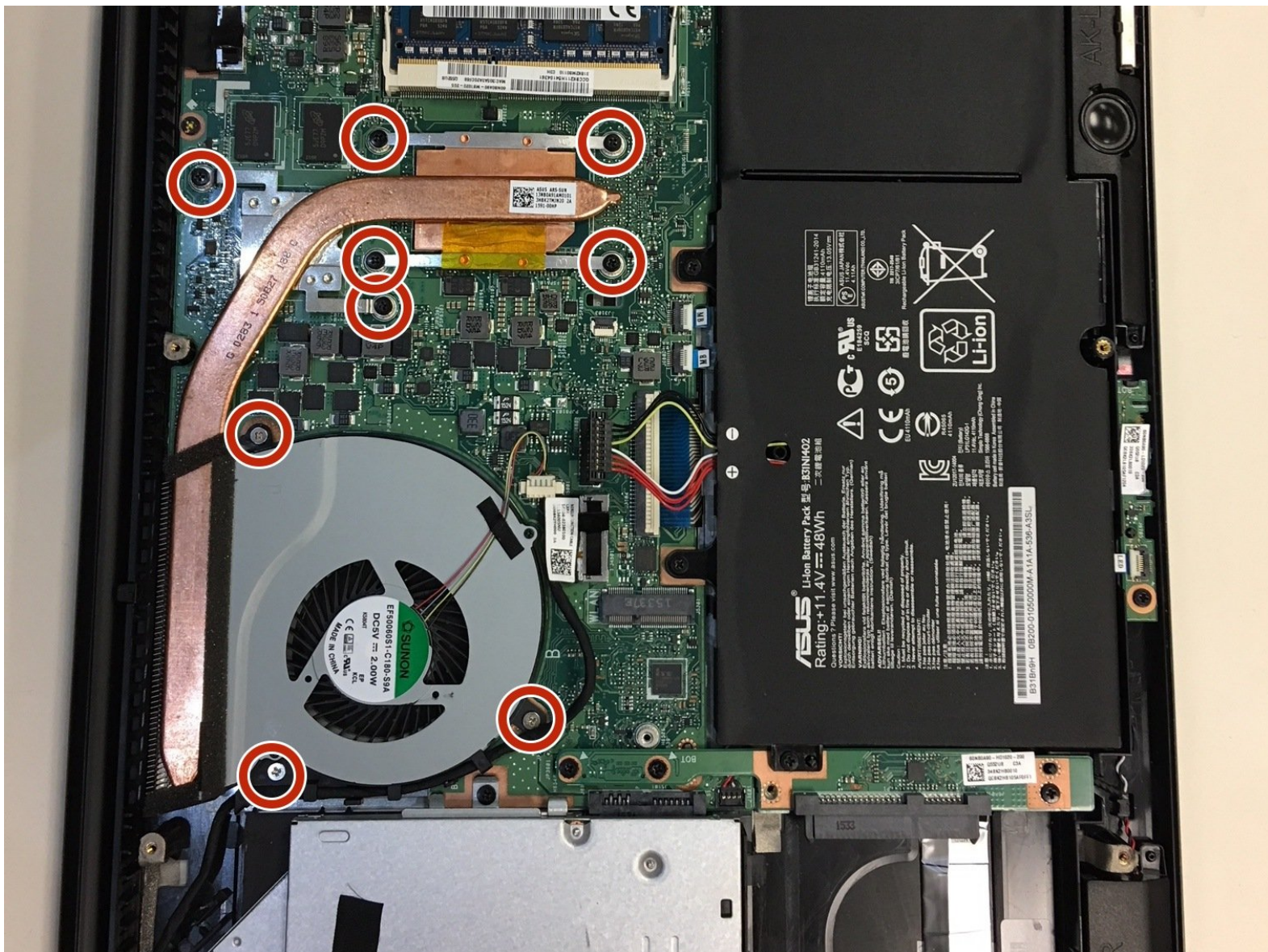




Asus Q552UB-BHI7T12 MotherBoard Replacement

A quick guide to replacing the motherboard.

Written By: Alexander Boettcher



INTRODUCTION

A quick guide to replacing the motherboard.



TOOLS:

- [Phillips #0 Screwdriver](#) (1)
-

Step 1 — Battery



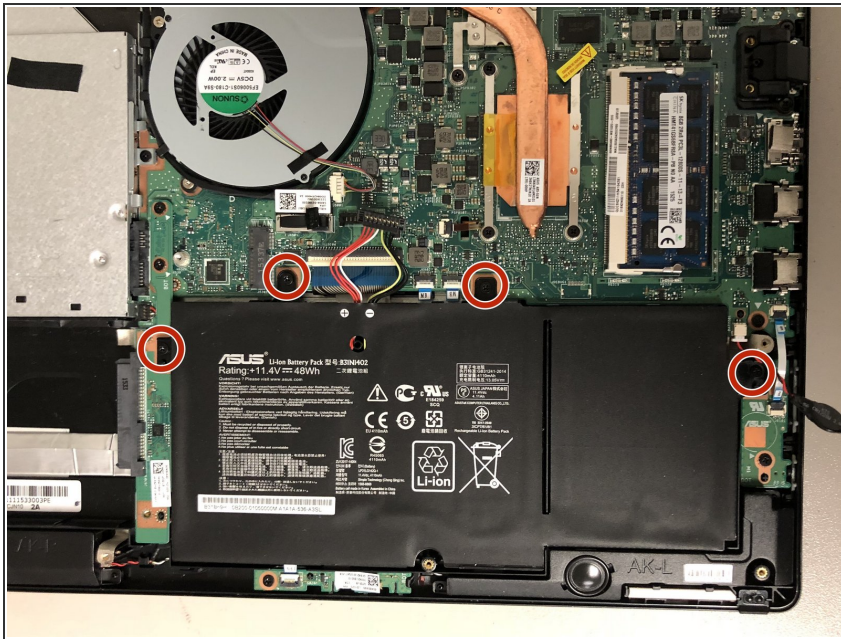
- Remove all ten screws on the back of the laptop to remove the cover.
- Remove the cover.

Step 2



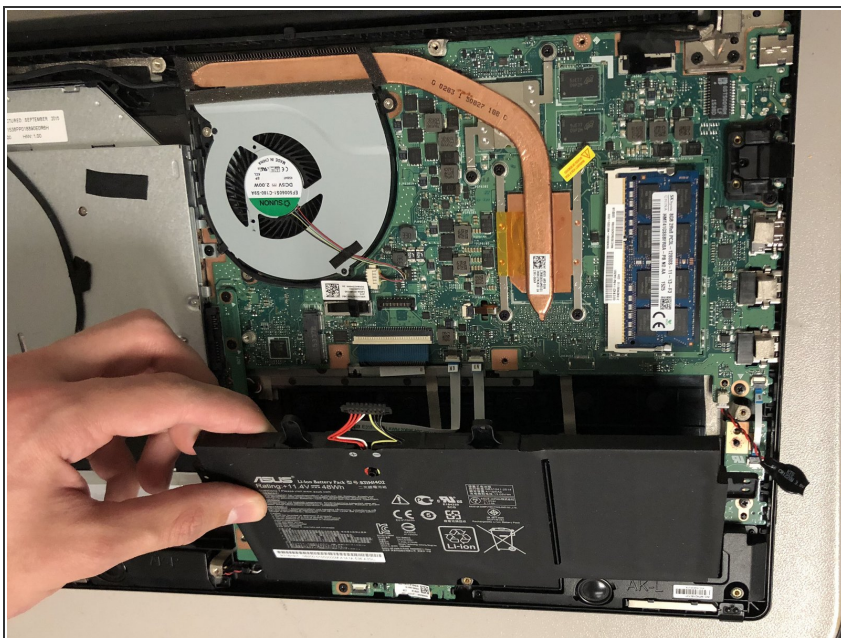
- Disconnect the wires at the top of the battery by lifting on the tabs protruding out of the plastic frame.

Step 3



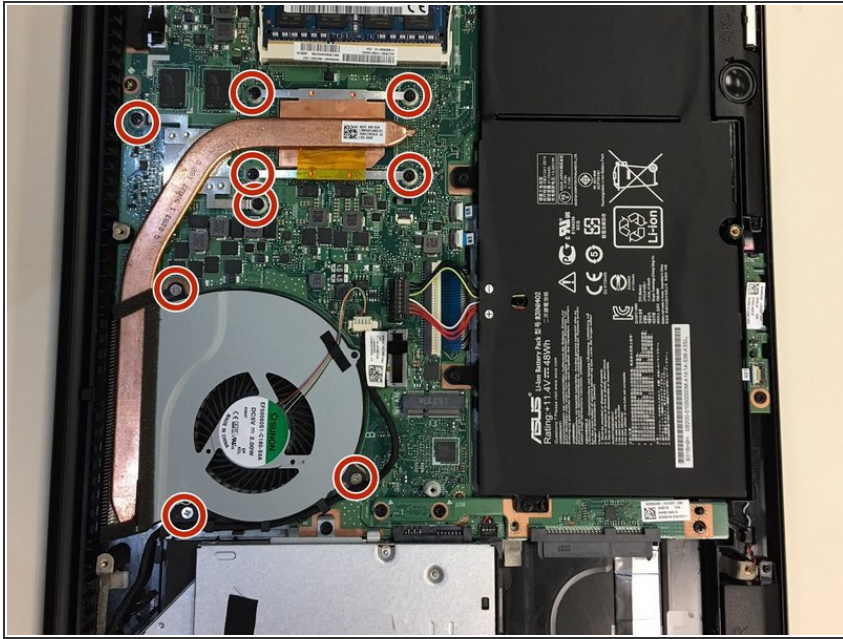
- Remove the four screws holding the battery in place, two on top and one on each side.

Step 4



- Gently lift out the battery by the side closest to the motherboard first.
- ⚠ Be careful of any extra wires that may have attached itself to the battery.

Step 5 — MotherBoard



- Next you will be removing the cpu fan. Begin by removing the nine screws holding it in place.

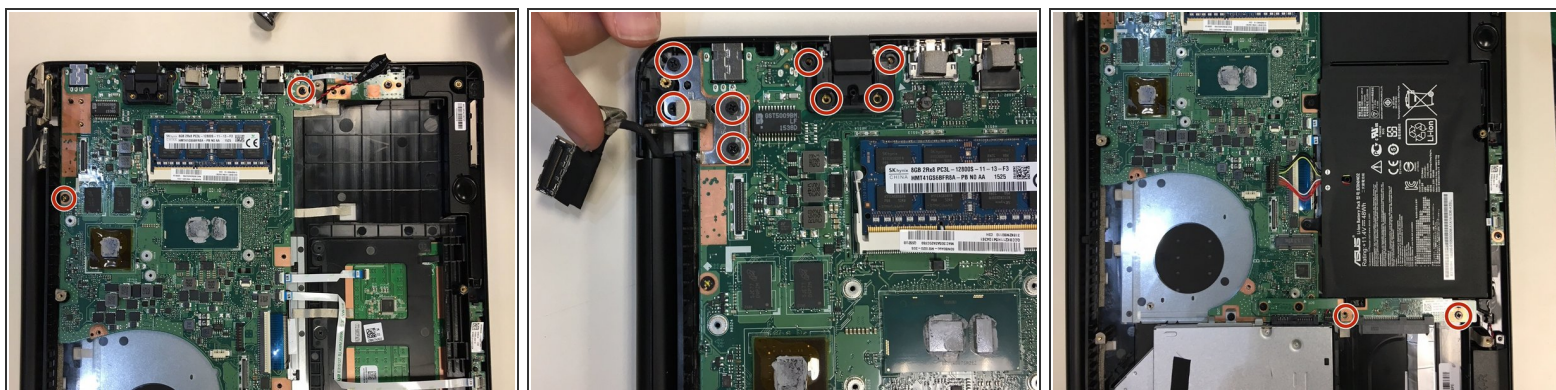
Step 6



- Then unplug the cable connecting into the motherboard.
- Right next to the wire that was just unplugged, pull up and release the final clip attaching the fan to the motherboard.
- Finally lift up and place aside.

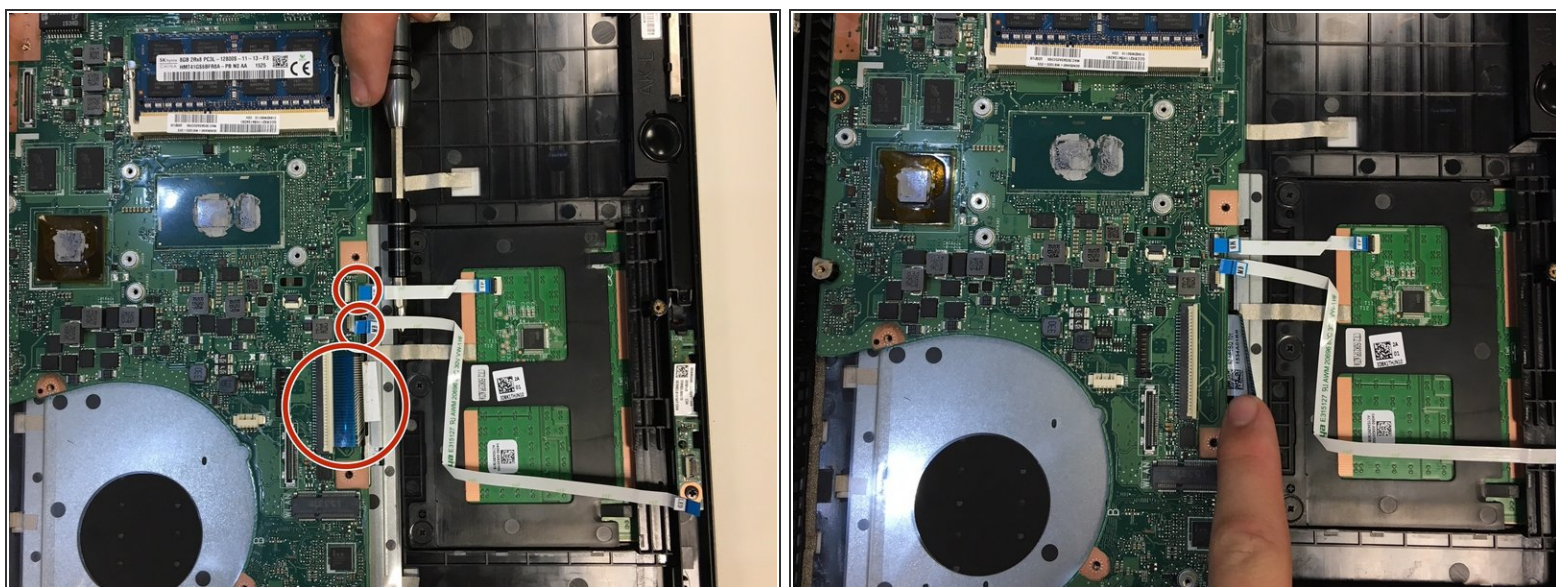
This document was generated on 2020-11-28 06:06:23 AM (MST).

Step 7



- Next remove the screws at the top and bottom of the motherboard.

Step 8



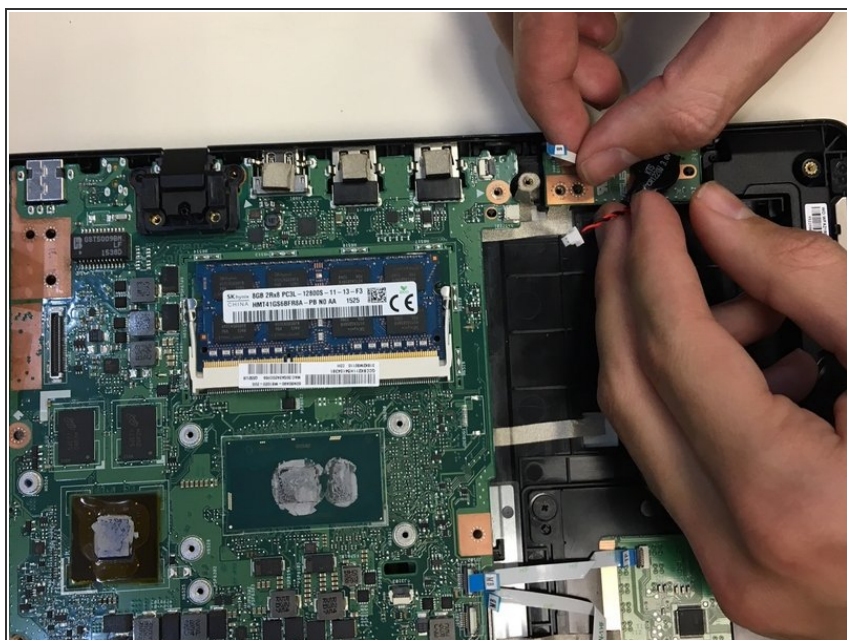
- Underneath the battery are 3 cables plugging into the motherboard, 1 wide one and two small ones. Lift the white tabs above them up, and then slide them out.

Step 9



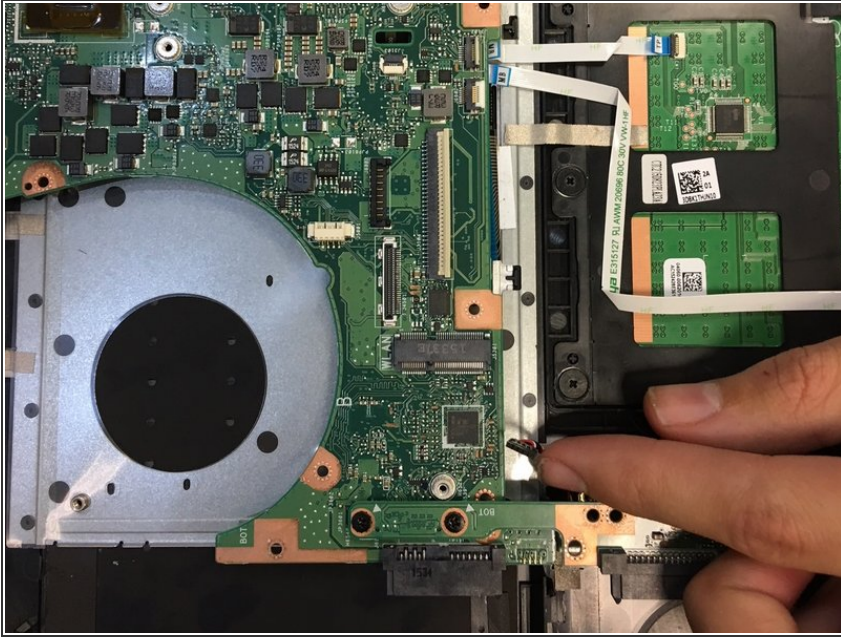
- Next you will need to remove the disk drive. You can follow our guide [here](#).

Step 10



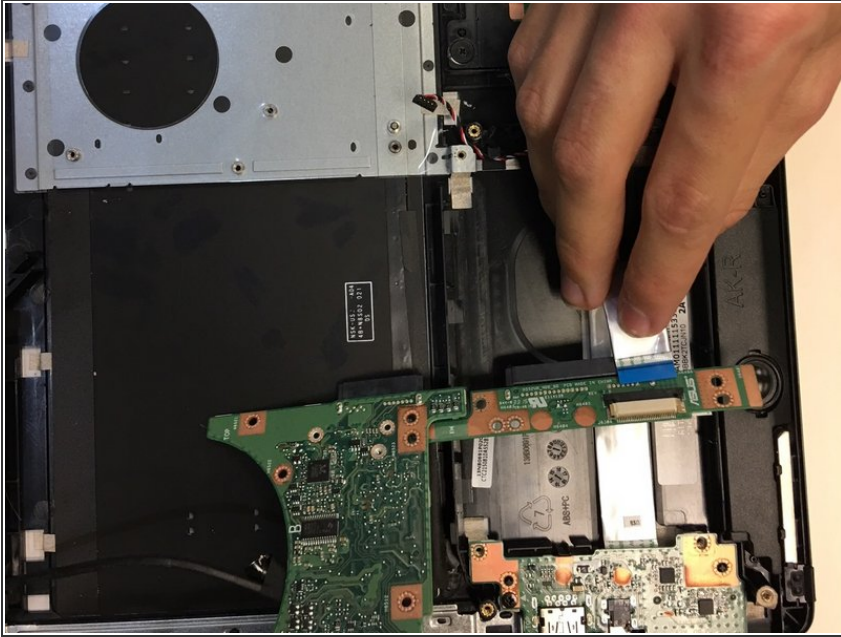
- Move to the top of the motherboard and unplug the two cables that are connected.

Step 11



- Move to the bottom of the motherboard and unplug the single cable near the battery.

Step 12



- Now slide the motherboard back toward where the disk drive was, lift up and turn over. You will see a cable connected to the bottom of the board. Pull back on the dark plastic frame and then remove the cable.
- Set the old motherboard aside and follow the steps in reverse to install the new one.

To reassemble your device, follow these instructions in reverse order.