



Ninja Mega Kitchen System BL770 Circuit Base Replacement

How to replace the Ninja Mega Kitchen System BL770 circuit base.

Written By: Tommee Walker



INTRODUCTION

This will work as a prerequisite guide for all other guides. This helps us break down the device into the main base layer.

TOOLS:

- [Phillips #2 Screwdriver](#) (1)
 - [T10 Torx Screwdriver](#) (1)
-

Step 1 — Circuit Base



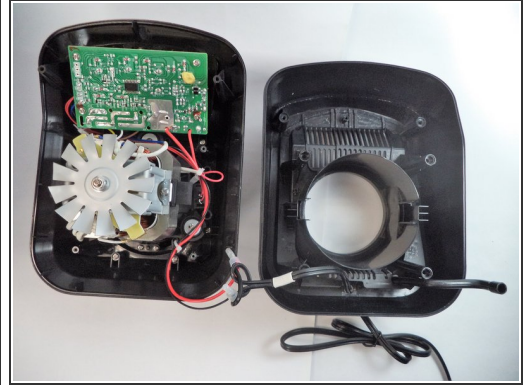
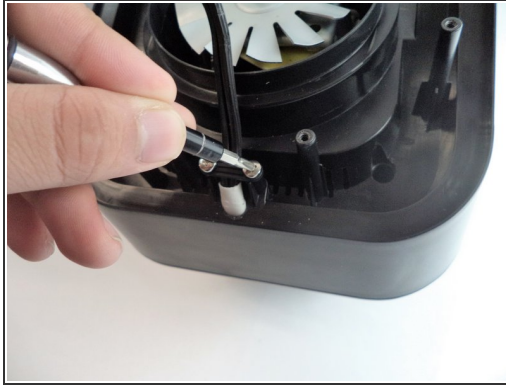
- Remove the five screws (13mm long, 6mm head) attaching the Base Cover using a Phillips screwdriver (Ph2).
- Remove the two screws (13 mm long, 6mm head) attaching the Base Cover using a T10 screwdriver.

Step 2



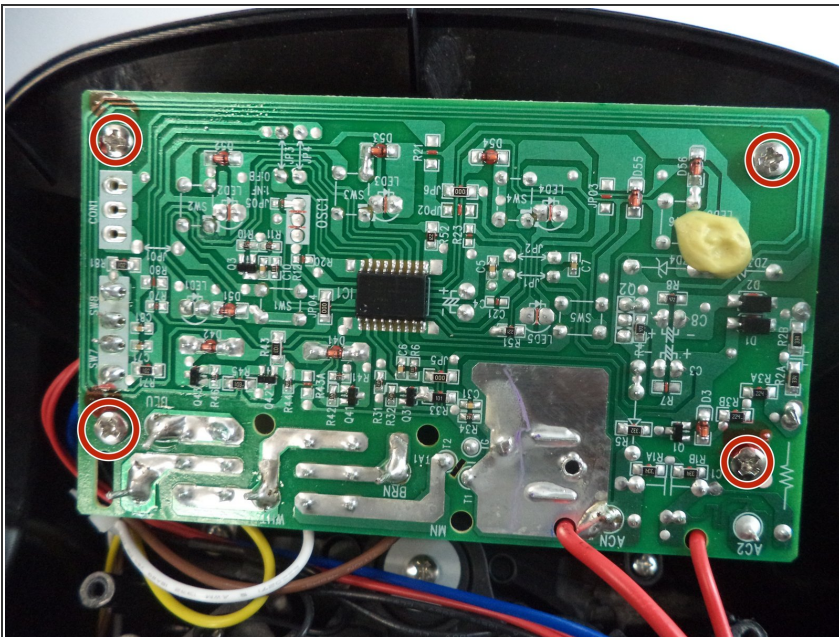
- Carefully remove the second layer from the base. You will not need a screwdriver for this step.

Step 3



- Remove the 2 screws (13mm, 6mm head) connected to the plastic piece holding down the power cord.
- Then remove the additional 4 screws (13mm, 6mm head) and 2 screws (11mm, 5mm head) securing the base.
- Carefully lift the base up from the rest of the blender.

Step 4



- Remove 4 screws (11mm, 4mm head) connecting the circuit board to the base.

To reassemble your device, follow these instructions in reverse order.

This document was generated on 2020-11-28 06:03:27 AM (MST).

