



New Nintendo 2DS XL Battery Replacement

This guide will allow you to access your New Nintendo 2DS XL's battery for replacement.

Written By: Tim Newman



INTRODUCTION

Your New Nintendo 2DS XL's battery may need to be replaced if the device doesn't turn on when you press the power button. The battery is directly accessible under the bottom panel. For more information, refer to our [troubleshooting page](#).



TOOLS:

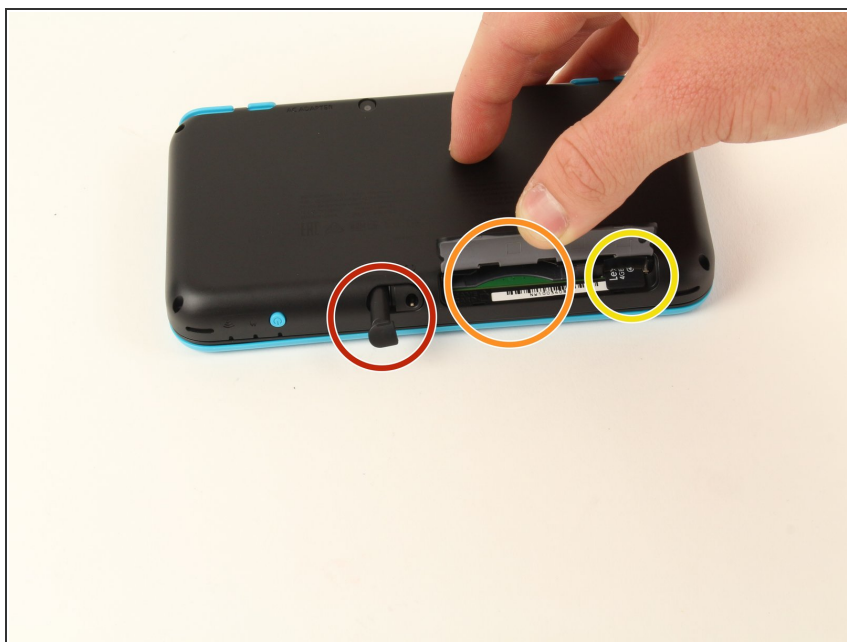
- [Tweezers](#) (1)
- [Spudger](#) (1)
- [Tri-point Y00 Screwdriver](#) (1)



PARTS:

- [CTR-003 Replacement Battery](#) (1)

Step 1 — Back Cover Removal Preparation



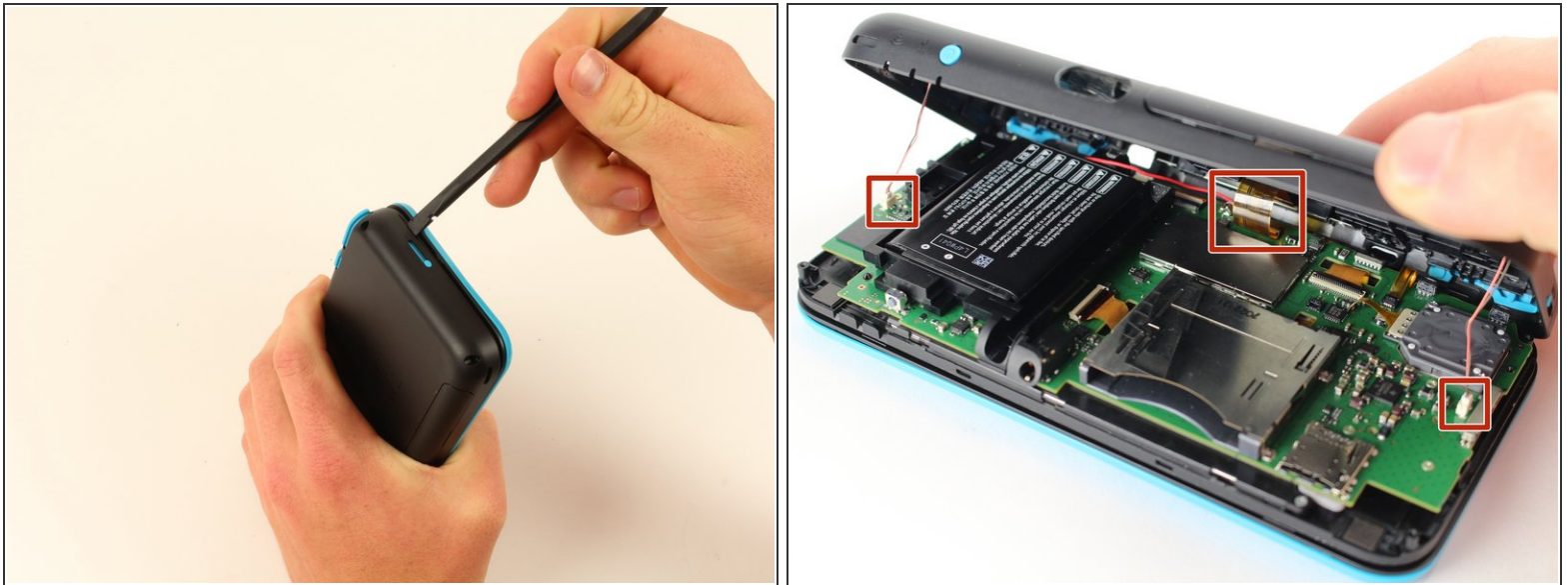
- Before starting the disassembly, remove
 - The stylus
 - Any game cartridge
 - The SD card

Step 2 — Back Cover Removal



- Unscrew the four 6mm tri-point screws located at the four corners of the bottom panel.

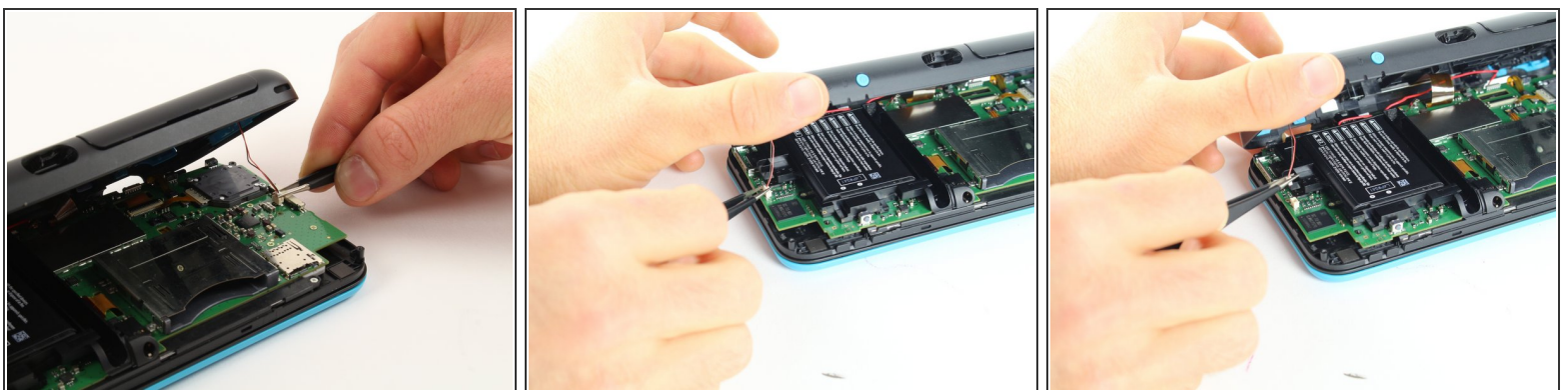
Step 3 — Case Separation



⚠ Be careful when separating the bottom panel from the front casing to avoid breaking the three cables connected to the motherboard (two on each side and one in the rear).

- Using a spudger, separate the back panel from the front casing by gently prying around the panel.
- There are many clips along the hinge of the case, so it is recommended to work your way along one short side and the two long sides before finishing the last short side.

Step 4



- Using tweezers, disconnect the two cables that connect the rear buttons on either side to the motherboard by gently pulling them upwards.

Step 5 — Battery Removal



- Using a spudger, lift out the battery.
- Be aware that there is a sticky pad holding the battery into its tray. It may be necessary to use multiple tools to gently pry the battery away from the tray and motherboard.

To reassemble your device, follow these instructions in reverse order.