



# Diaper Genie Elite Trap Door Side Support Replacement

Written By: Miroslav Djuric



## INTRODUCTION

I got upset at the Diaper Genie since it broke again less than a week after fixing it for the first time. So to get back at them, I created a guide on how to fix it...

...And then realized the culprit was my wife, who did not know that the diapers **should not** be pushed \*through\* the trap doors.



### TOOLS:

- [Cordless Drill](#) (1)
- [1/8" Drill Bit](#) (1)



### PARTS:

- [#8-32 x 1" Screws](#) (1)
- [#8-32 Washers](#) (1)

## Step 1 — Trap Door Side Support



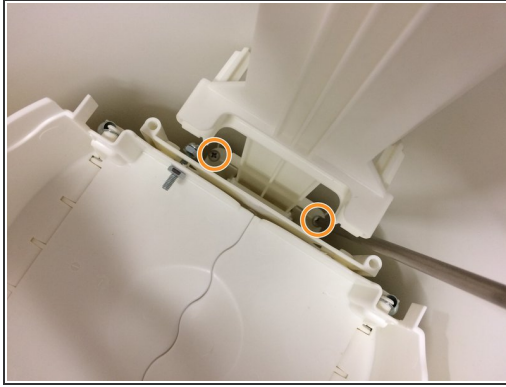
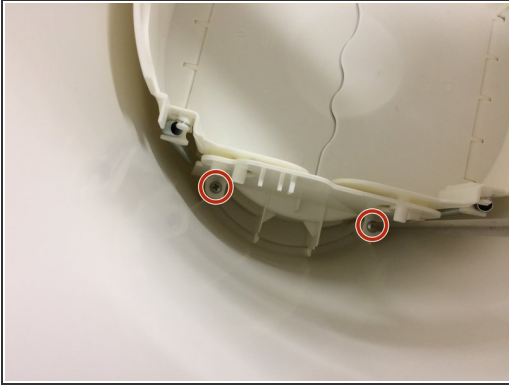
- Get your stuff together. You'll be replacing one of the plastic side support tabs, just like the one I had already replaced.

## Step 2



- Unscrew these Phillips screws.
- Remove white plastic retainer thingy.

### Step 3



- Unscrew these Phillips screws.
- Now unscrew these Phillips screws!
- Pull out the whole assembly.

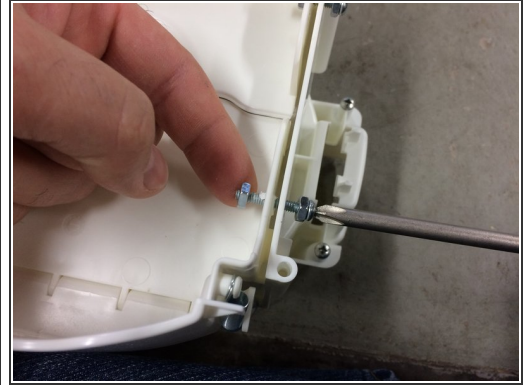
### Step 4



- Use a 1/8" drill bit to drill through the center of the original tab location until you have a nice, clean hole.



## Step 5



- i** I added an extra nut to the head of the screw so that there's a more substantial edge for the plastic can parts to press onto.
- Screw the screw through the hole you've just created. It should stick out approximately 1/2" from the side of the mechanical assembly.
- i** The 1/8" drill bit created a slight "interference fit" with the #8-32 screws, meaning that the plastic from the hole keeps the screw nice and tight.
- Add a nut to the other side of the screw, just to hold it together.
- i** Do not overtighten, as you want to keep a gap between the trap door and the side of the mechanical assembly.

## Step 6



- Perform a little test to make sure everything works as it should. The mechanical actuation should open smoothly and quickly.

## Step 7



- Put the assembly back into place (without screwing it in), and verify that the actuator pole hits the screws at a good location.
- Adjust the length of screws if needed.
- Put everything back together in reverse order, including all the screws you took out.

## Step 8



- OH @\$\*\$ SON!!!!!!

To reassemble your device, follow these instructions in reverse order.