



Dell XPS 13 Motherboard Replacement

Use this guide to replace the motherboard in...

Written By: Evan Shui



INTRODUCTION

Use this guide to replace the motherboard in the Dell XPS 13.



TOOLS:

- [iFixit Opening Picks \(Set of 6\)](#) (1)
 - [Spudger](#) (1)
 - [Tweezers](#) (1)
 - [Phillips #0 Screwdriver](#) (1)
 - [T5 Torx Screwdriver](#) (1)
 - [iFixit Opening Tool](#) (1)
-

Step 1 — Back Cover



- Remove the eight 4 mm T5 Torx screws from the bottom cover.

Step 2



- Use a plastic opening tool to pry open the 'XPS' flap in the middle.

Step 3



- Remove the single Phillips screw hidden beneath the flap.

Step 4



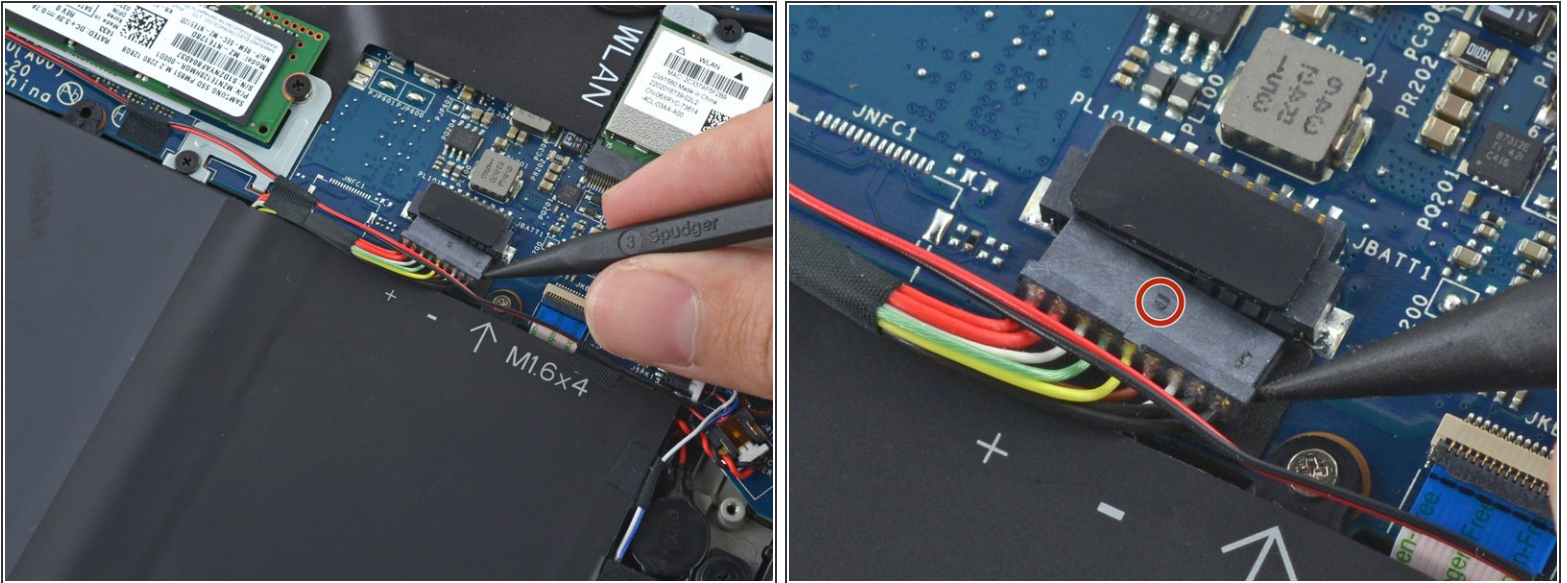
- Use opening picks or a plastic pry tool to pry open the case clips, beginning from the back edge.

Step 5



- Remove the bottom cover.

Step 6 — Battery Disconnection

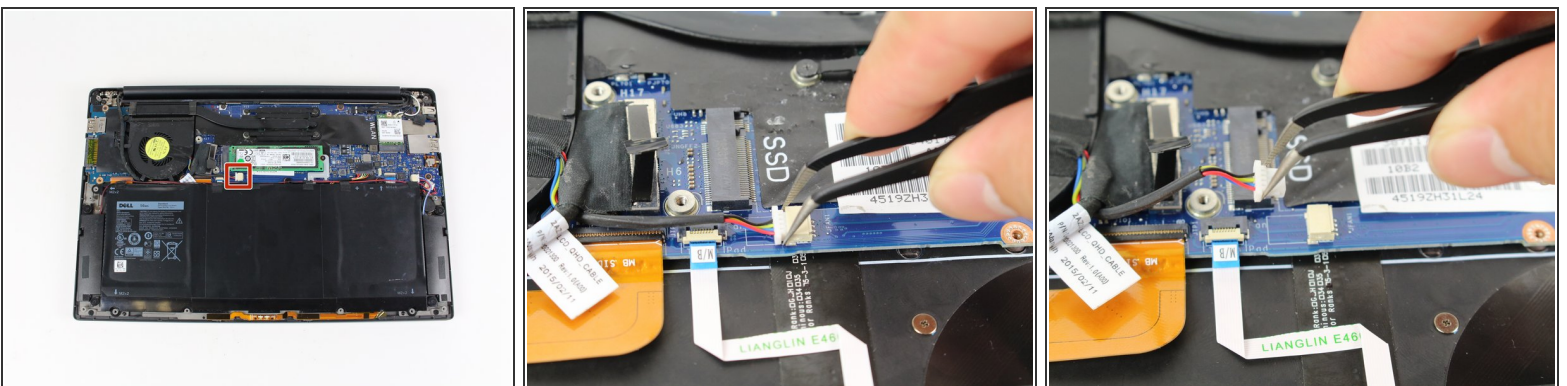


- Pull the battery cable connector towards the battery to disconnect it from its socket.
- If the connector is stubborn, push a little at one side, then the other, to "walk" it out of its socket.
- If you have trouble walking the connector out of the socket, use the point of a spudger to gently push on the connector indent to slide the connector out.

⚠ Do not pull up.

- Open the display and press the power button for five seconds to drain any remaining charge from the system.

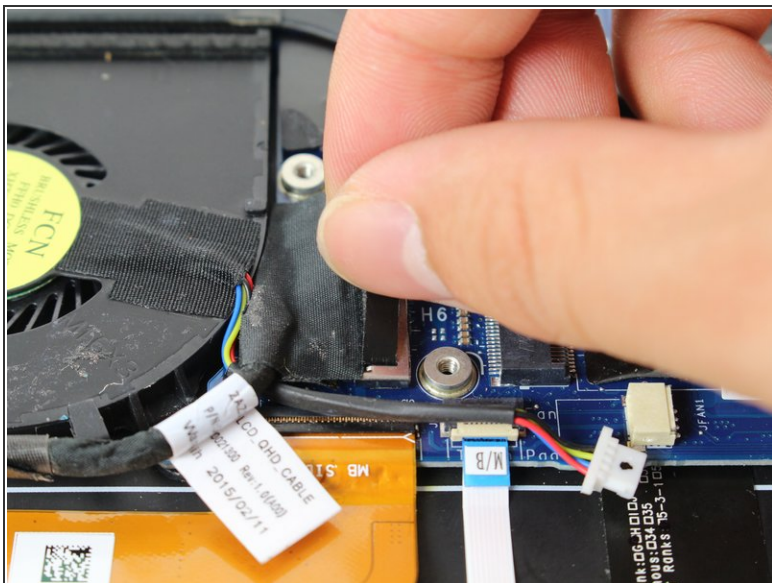
Step 7 — Fan



- Use tweezers to remove the little white connector by pulling it out and away from its socket.

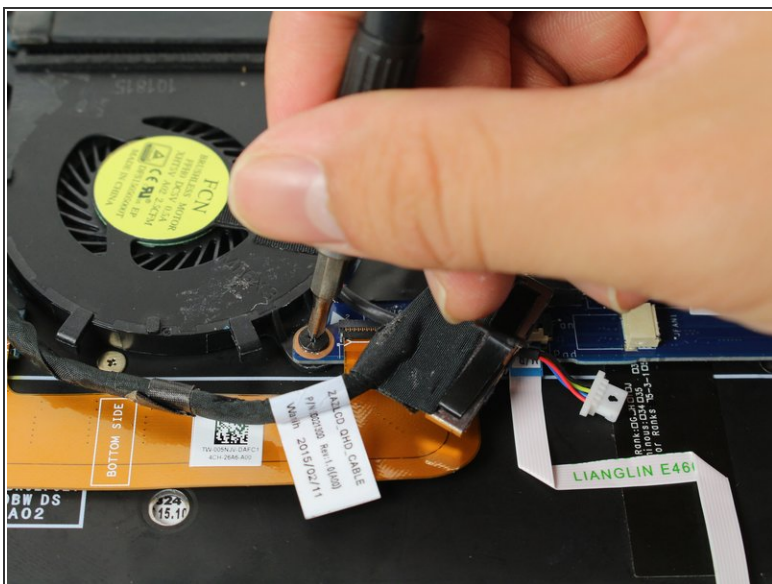
This document was generated on 2023-03-23 07:44:21 PM (MST).

Step 8



- Remove the black standard flat connector by lifting the tab up with your hand.

Step 9



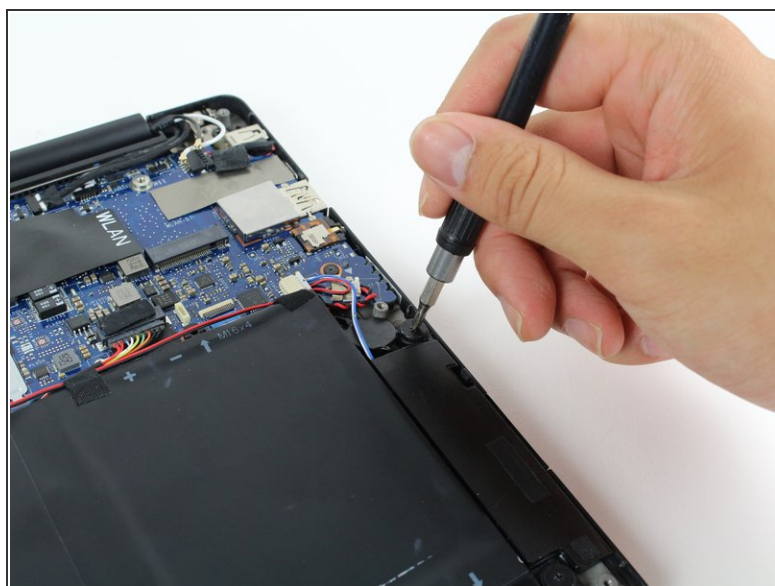
- Remove the 4 mm Phillips #0 screw that connects the fan to the motherboard.
- Remove the 4 mm Phillips #0 screw that connects the fan to the base of the computer.

Step 10



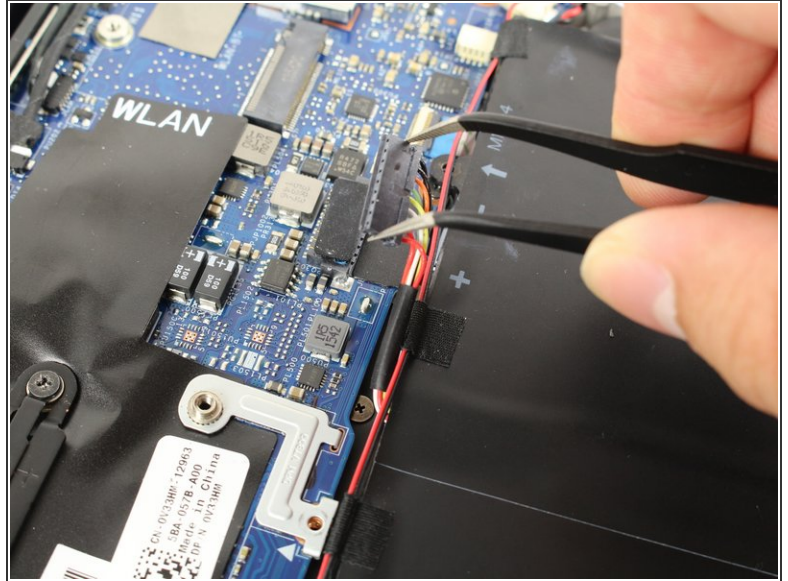
- Use your right hand to lift up the larger section of the motherboard, closest to the fan.
- Use your left hand to pull the fan at a 30-degree angle out from underneath the motherboard.

Step 11 — Battery



- Remove the four 3 mm Phillips #0 screws located on each corner of the battery.

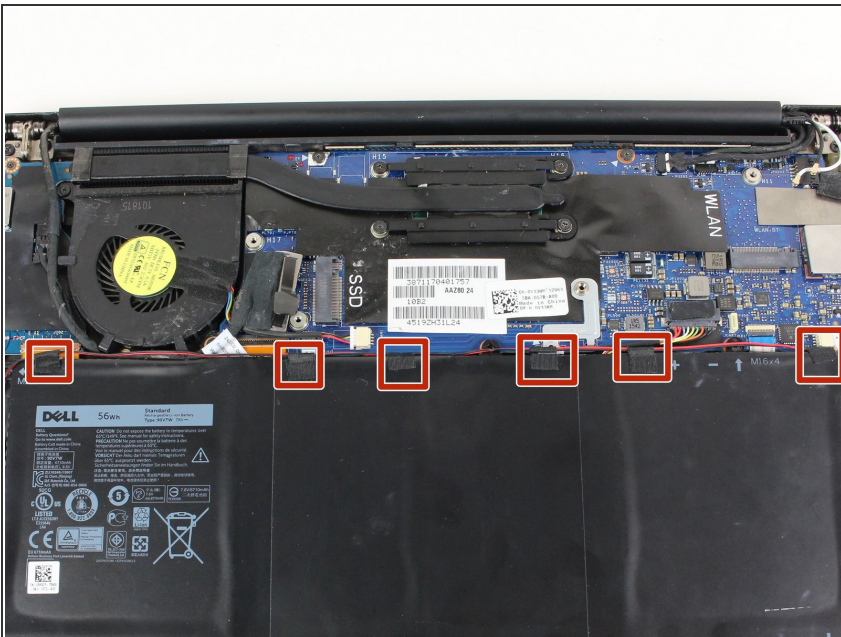
Step 12



- Pull the battery cable connector towards the battery to disconnect it from its socket.

⚠ Do not pull up.

Step 13



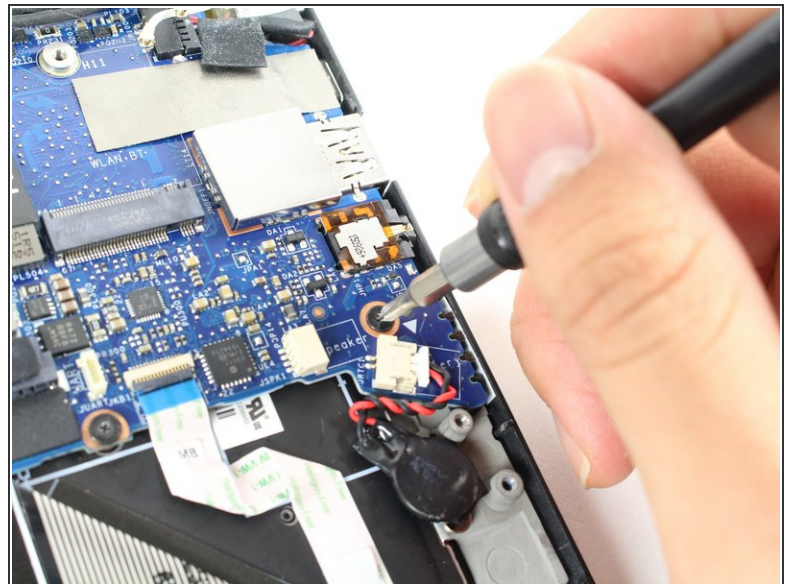
- Peel up any tape securing the speaker cables to the battery.
- ⓘ You do not need to remove the speakers, only the tape, allowing the battery to be removed out under the speaker cables.

Step 14



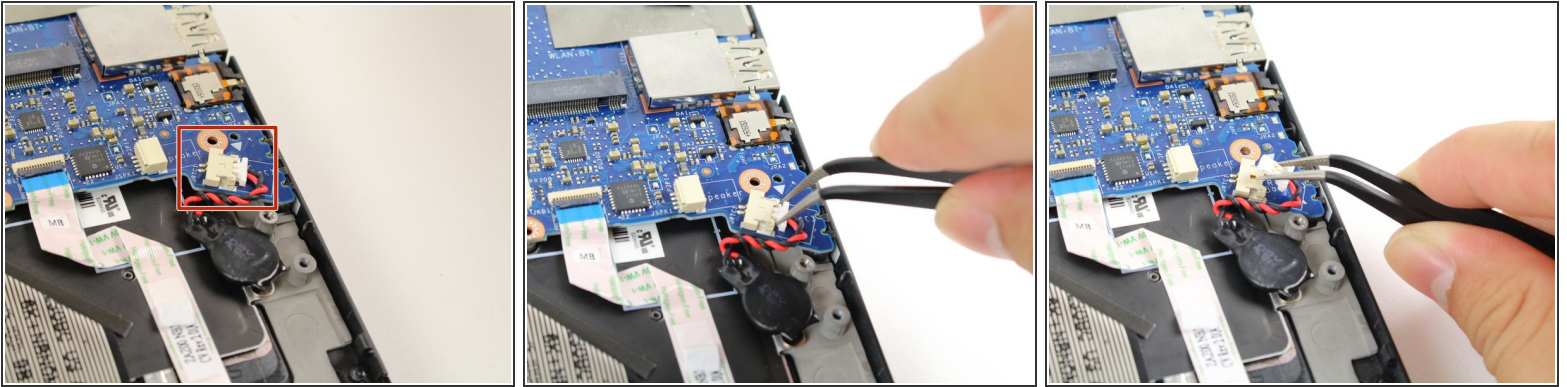
- Remove the battery.

Step 15 — Motherboard



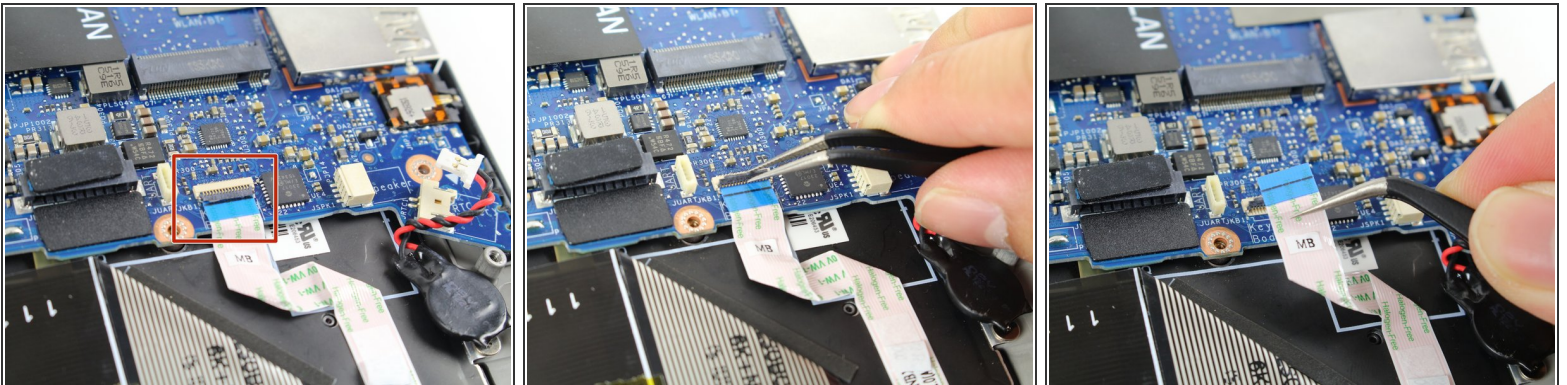
- Remove the eight 4 mm Phillips #0 screws from the motherboard.

Step 16



- Locate the red and black cable connector at the bottom right of the motherboard.
- Use tweezers to slowly detach the cable connector from its socket by pulling it to the right and up.

Step 17



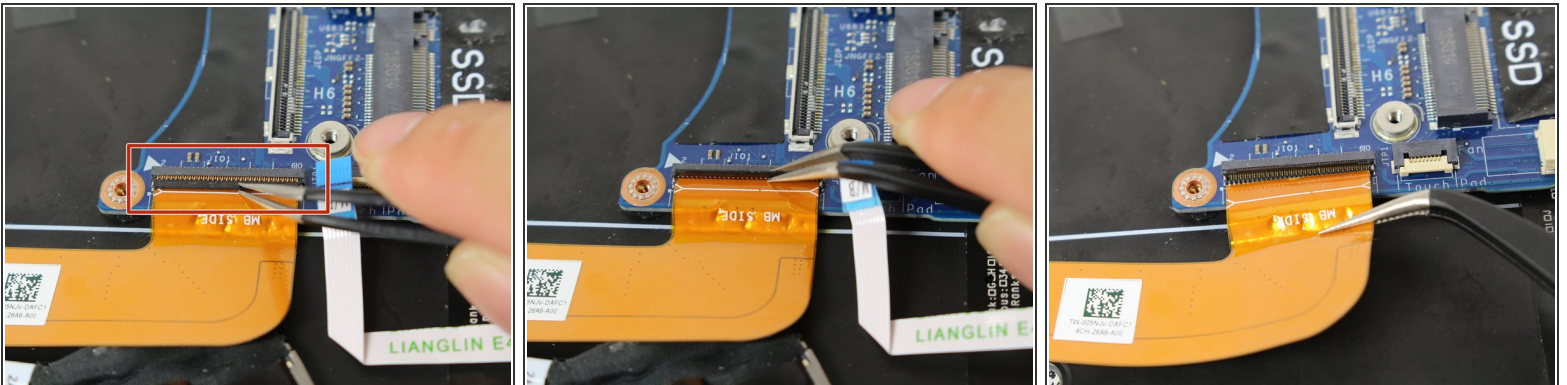
- Use tweezers to flip open the Zero Insertion Force (ZIF) connector.
- Use tweezers to detach the ribbon cable from the ZIF by pulling it towards yourself.

Step 18



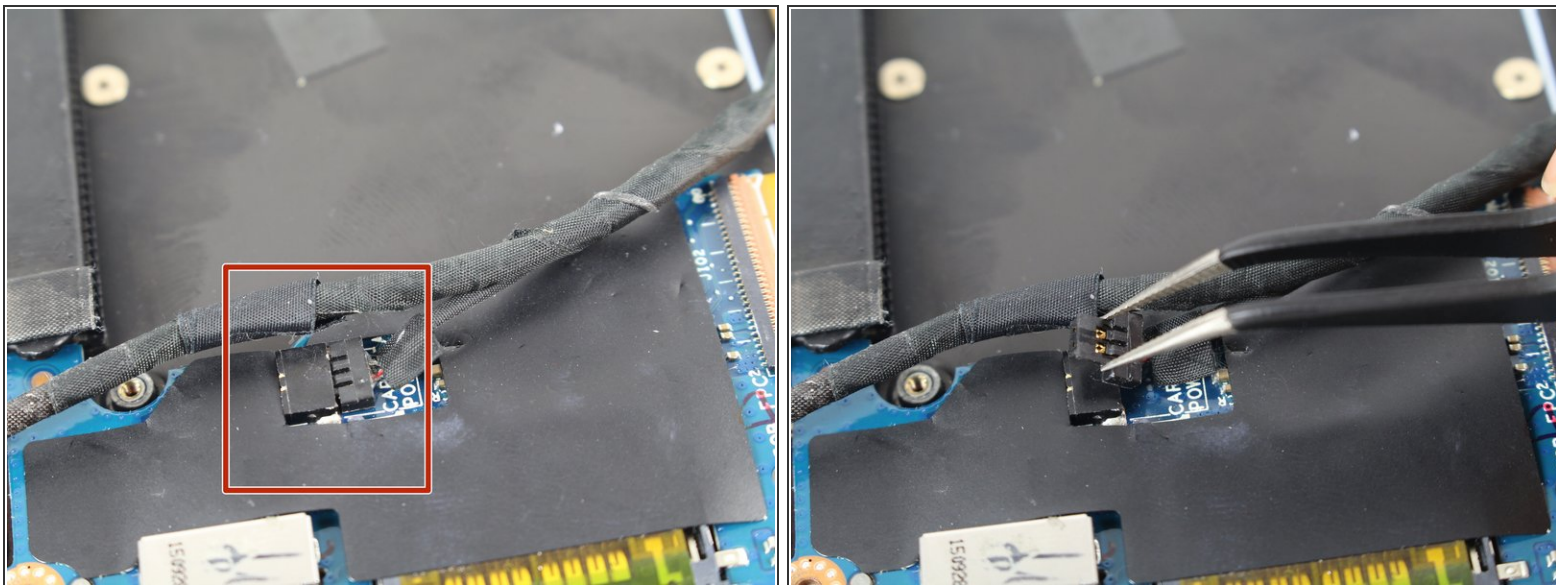
- Use tweezers to flip open the white ZIF connector.
- Use tweezers to detach the ribbon connector from the ZIF by pulling it towards yourself.

Step 19



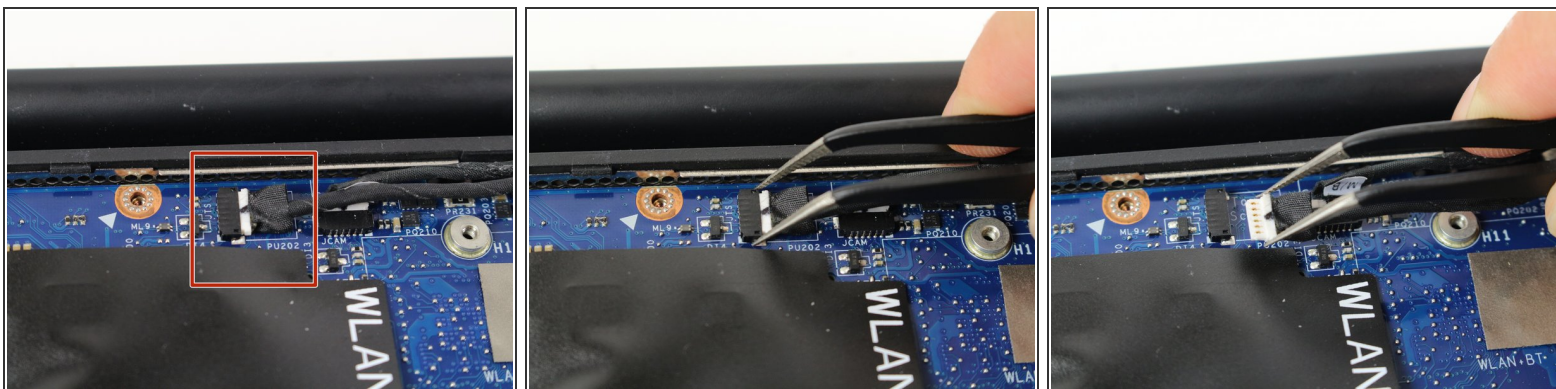
- Use tweezers to flip open the ZIF connector.
- Use tweezers to detach the orange ribbon connector from the ZIF by pulling it towards yourself.

Step 20



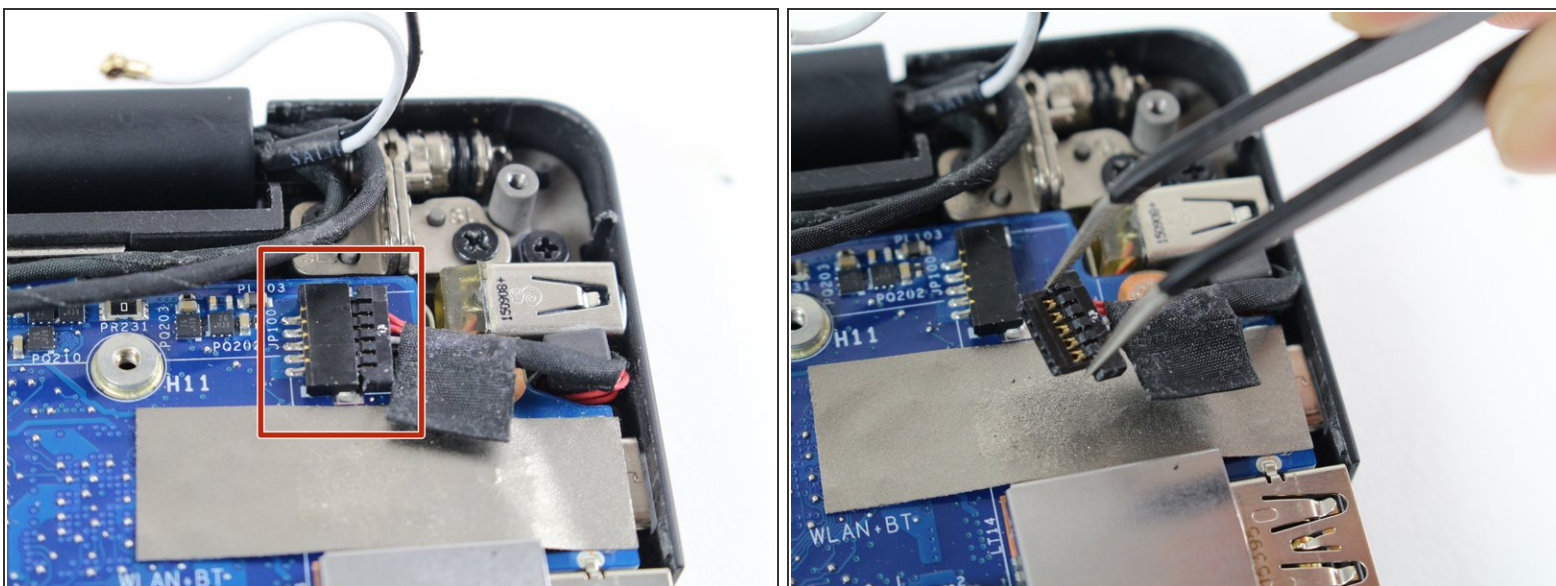
- Use tweezers to detach the black cable connector out of its socket by pulling it to the right.

Step 21



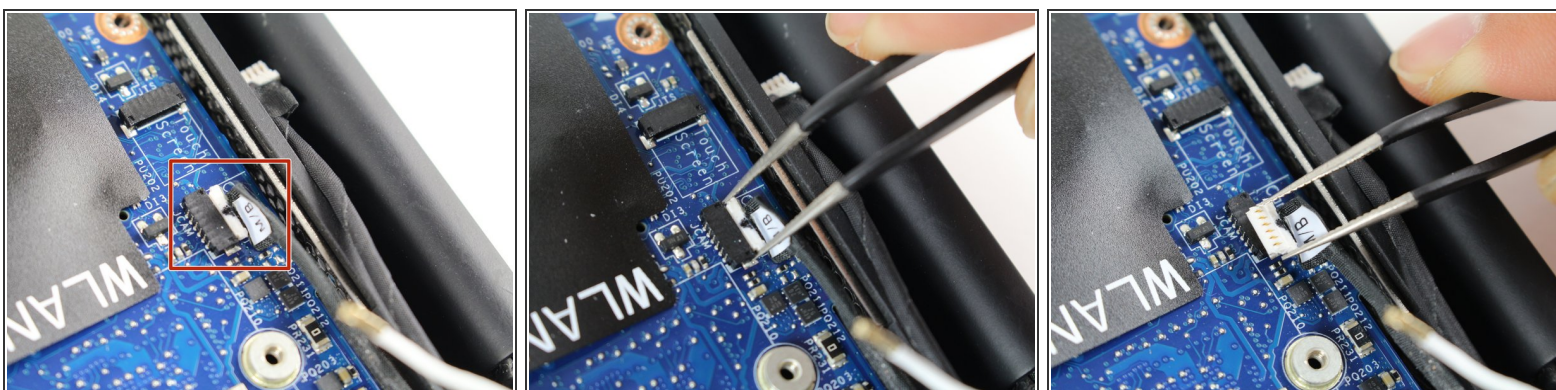
- Use tweezers to gently detach the black and white cable connector out of its socket by pulling it to the right.

Step 22



- Locate the connector at the top right of the motherboard.
- Use tweezers to detach the cable connector from its socket by pulling it to the right.

Step 23



- Locate the last black cable connector.
- Use tweezers to detach the black cable connector from its socket by pulling it to the right.

Step 24



- Use your hands to lift up the motherboard.

To reassemble your device, follow these instructions in reverse order.