



Bose Wave Radio AWR1-1W Button Panel Replacement

Remove the button panel of the device to replace broken buttons.

Written By: Cassie Harriman



INTRODUCTION

Buttons can wear out over time or stop working completely. This guide will show how to remove the button panel on top of the device.



TOOLS:

- [Spudger](#) (1)
-

Step 1 — Front Grill



- Wedge the spudger between the top and front panel on the right side of the device.
- Push down on the spudger, lifting the front panel away from the top panel until it pops out of the right side.
- Repeat for the left side of the device.

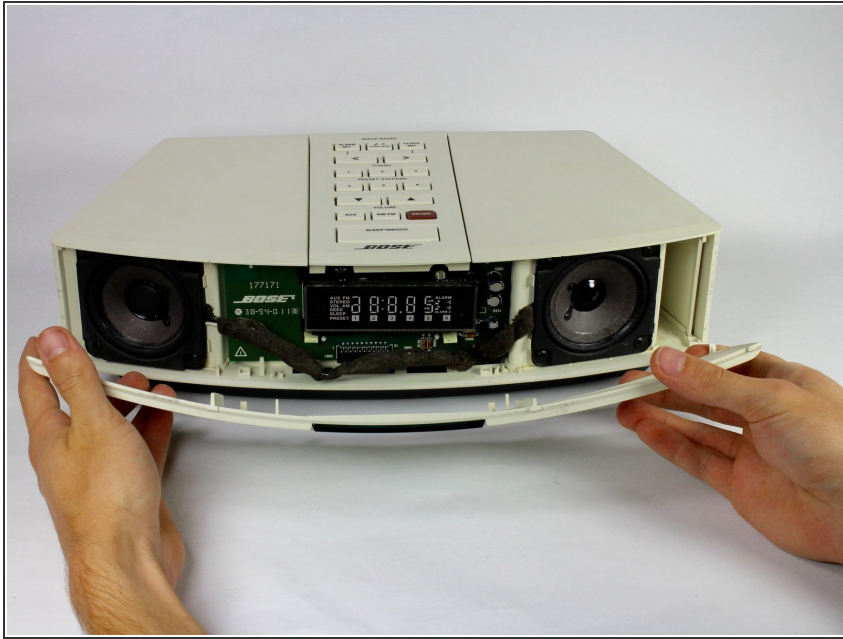
⚠ Too much pressure may break the panel, but it should flex slightly before it pops out.

Step 2



- Once the panel is released on the left side, wedge the spudger between the top panel and front grill of the device as shown.
- Apply pressure and move the spudger upward until the front grill pops out.
- Repeat for the right side of the device.

Step 3



- Lift the front grill away from the device.

Step 4 — Button Panel



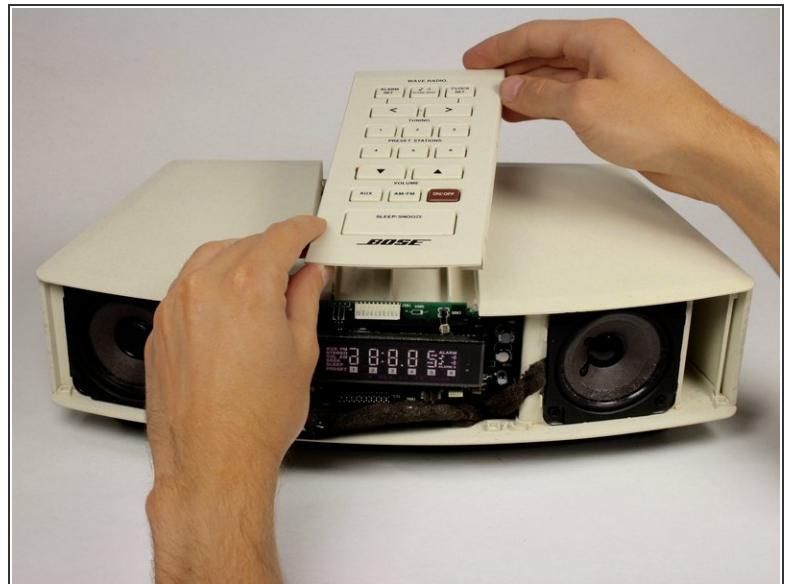
- Turn the device around.
- Wedge the spudger into the larger part of the gap under the back of the device.

Step 5



- Move the spudger up until the button panel is loose.
- Push forward on the back of the button panel to disconnect the panel from the top of the device.

Step 6



- Turn the device around.
- Pull the button panel forward with one hand and push the screen assembly into the device with the other to disconnect the button panel.

To reattach the button panel, place the panel in it's proper location. Press down and secure into place.