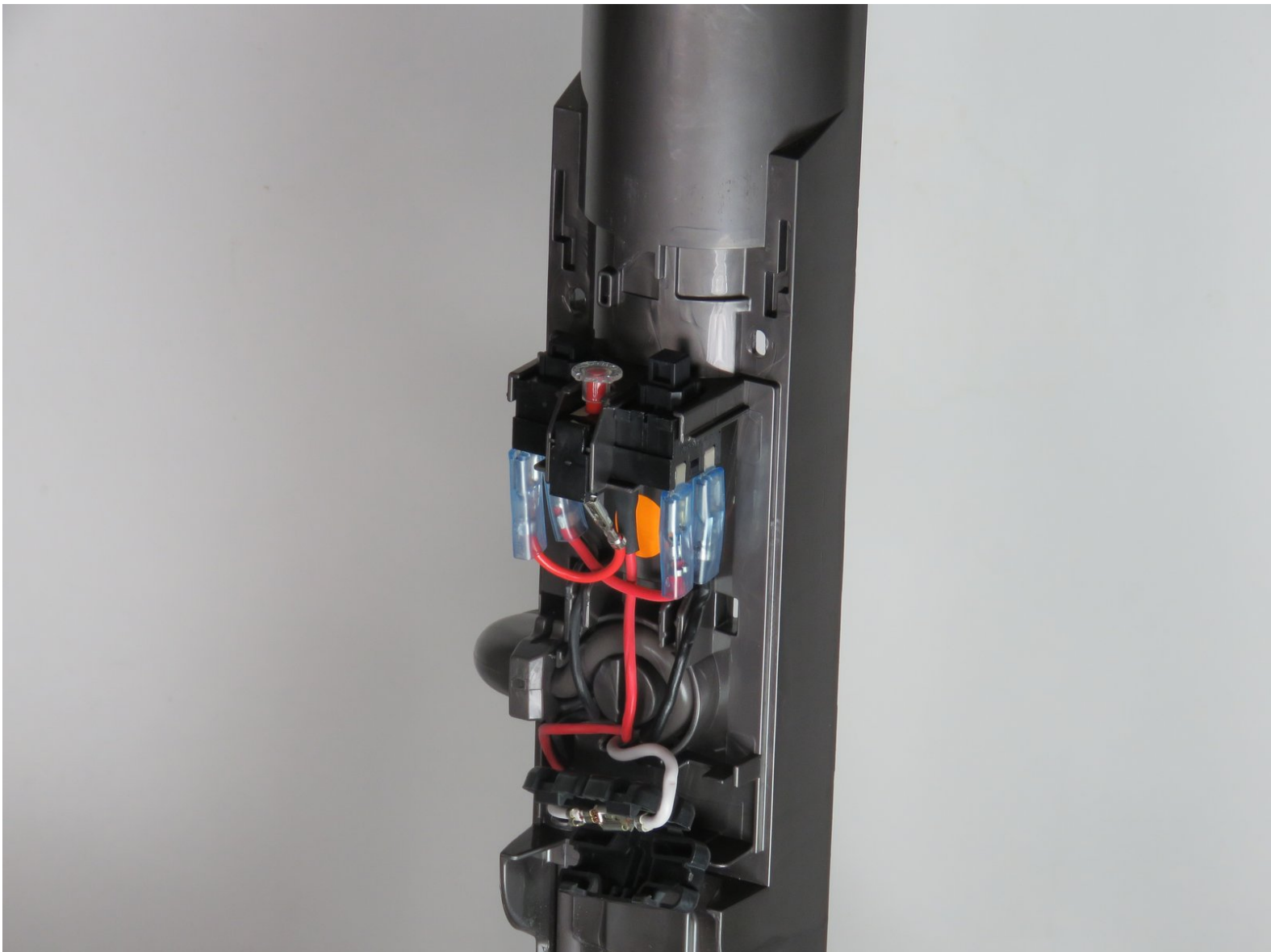




# Dyson Ball Animal Power Cord Replacement

This is a step by step guide for the replacement of a broken power cord on the Dyson Ball Animal.

Written By: Jonathan Gong-Guy



## INTRODUCTION

In this guide you will be able to remove the cover on the power cord and remove and reattach the power cord for the Dyson Ball Animal.



### TOOLS:

- [T15 Torx Screwdriver](#) (1)



### PARTS:

- [Dyson DY-925528-01 Power Cord](#) (1)

## Step 1 — Power Cord



- Turn off and unplug the vacuum.
- Remove the vacuum canister from the front of the vacuum.

## Step 2



- Flip the vacuum around and remove the hose so it is not blocking the back of the vacuum.

## Step 3




- There are four 15mm screws that must be removed with a Torx T15 screwdriver.

## Step 4



- After all the screws are released there are two tabs that must be pressed in and towards the center.

 The tabs can be pressed in one at a time but may require some force.

## Step 5




- After removing the two tabs gently pull the face off the power supply.

## Step 6

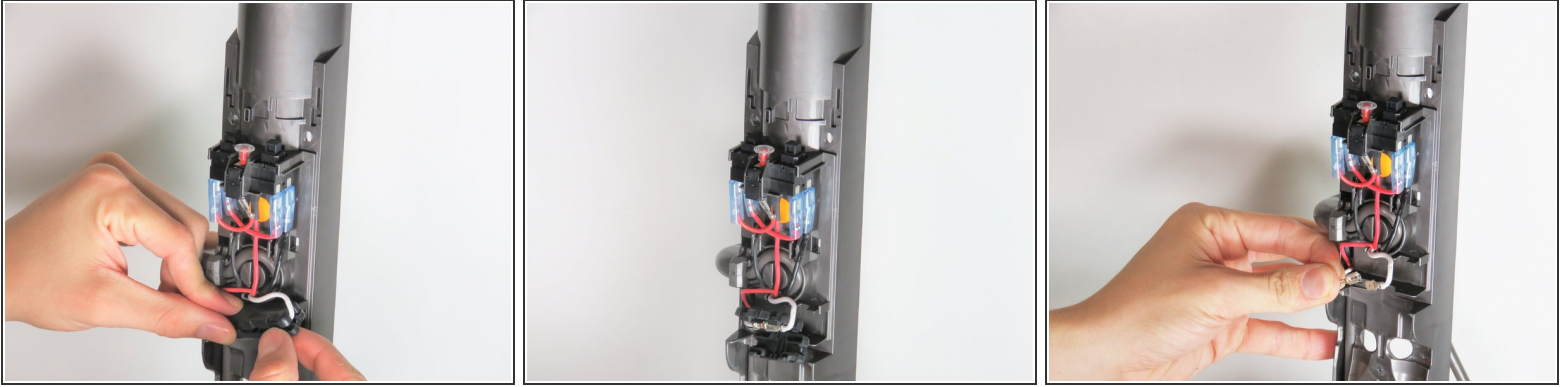


- Follow the black cord from the power cord.
- Pinch the plastic piece.
- Remove from the metal tongue.

 When removing the cords, grab them from the plastic parts and not the cord.



## Step 7



- There is also a black case that needs to be opened in order to remove the power cord.
  - After opening the case pull apart the wire and attach the new wire.
- ⚠ Again, make sure that you are pulling from the heads of the wires and not the wires themselves.

To reassemble your device, follow these instructions in reverse order.