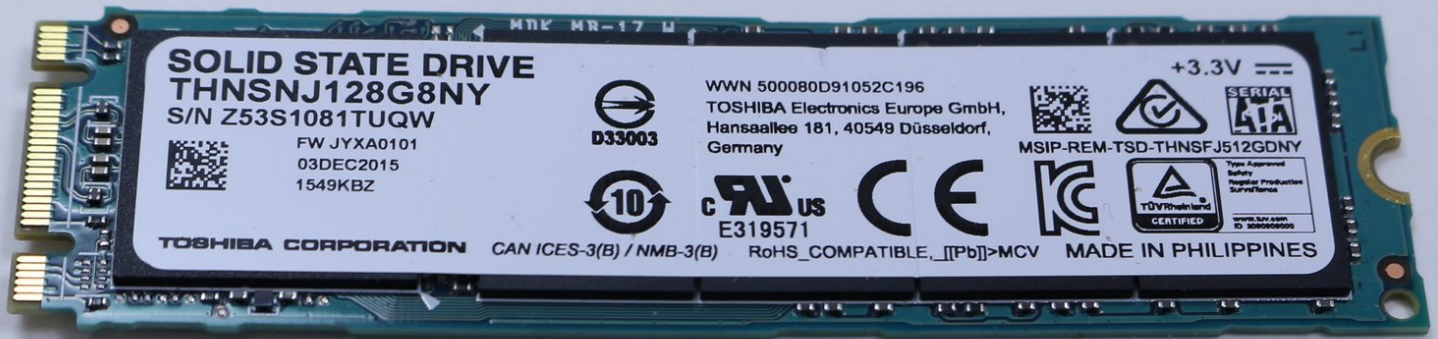




MSI GE72 6QF Apache Pro SSD Replacement

This guide will teach you how to replace the...

Written By: Tanmay Kumar



INTRODUCTION

This guide will teach you how to replace the SSD on your MSI GE72 6QF Apache Pro



TOOLS:

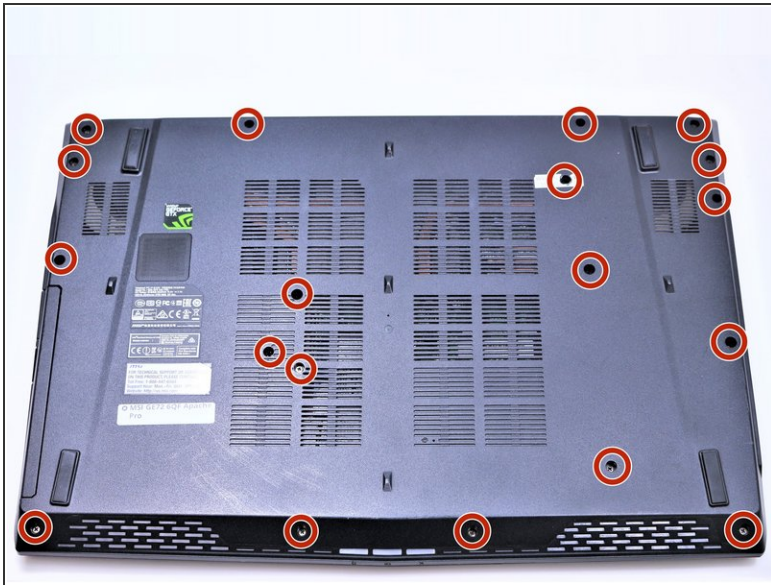
- [Phillips #1 Screwdriver](#) (1)



PARTS:

- [Crucial P3 NVMe PCIe M.2 2280SS SSD - solid performance, switching from HDD or SATA to NVMe™](#) (1)
- [Crucial P3 Plus NVMe PCIe M.2 2280SS SSD - fast Gen4 NVMe™ storage for data-intensive applications](#) (1)
- [Crucial P5 Plus NVMe PCIe M.2 2280SS SSD - professionals, creatives, and hardcore gamers](#) (1)

Step 1 — Battery



⚠ Make sure the laptop is off and unplugged (not charging).

- With the laptop closed and upside down, unscrew the nineteen 5.5mm Phillips #1 screws that keep the back cover in place.

Step 2



- Slide the optical drive out of the laptop.

Step 3



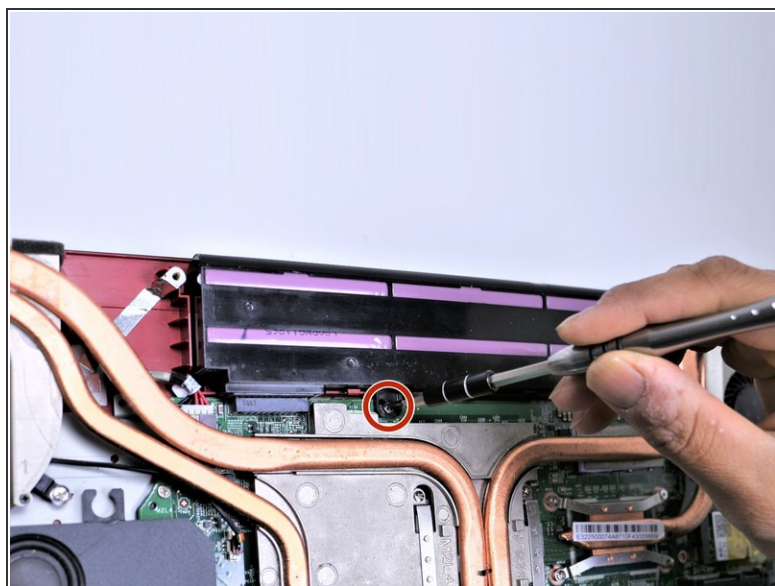
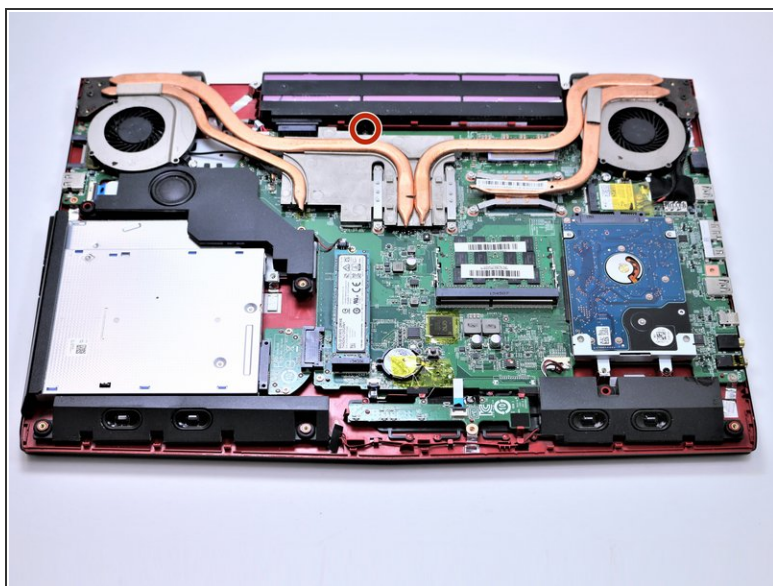
- Use a Phillips screwdriver to remove the three screws along the edge of the optical drive bay.

Step 4



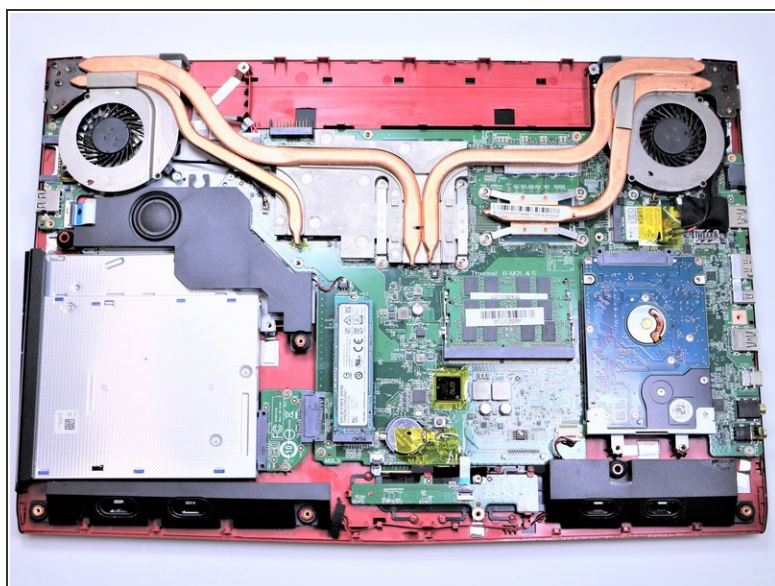
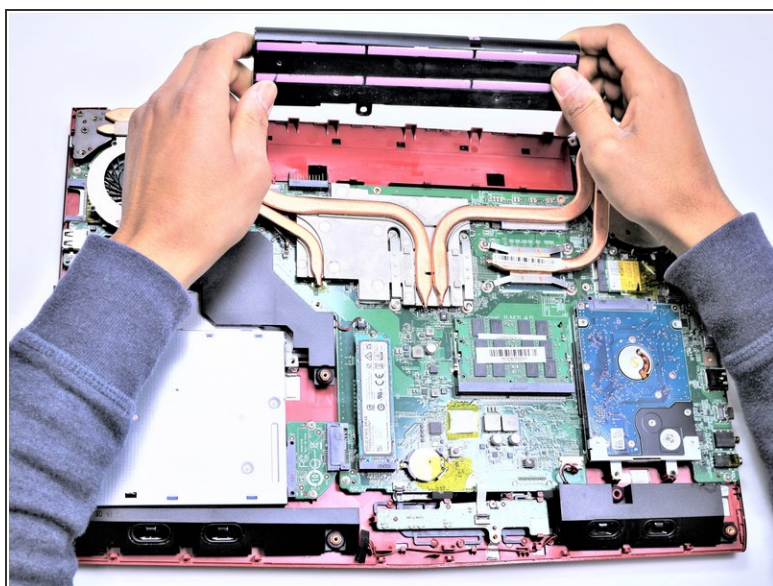
- Using your fingers, gently loosen the edges of all four sides of the back cover.
- Gently pull off the back cover.

Step 5



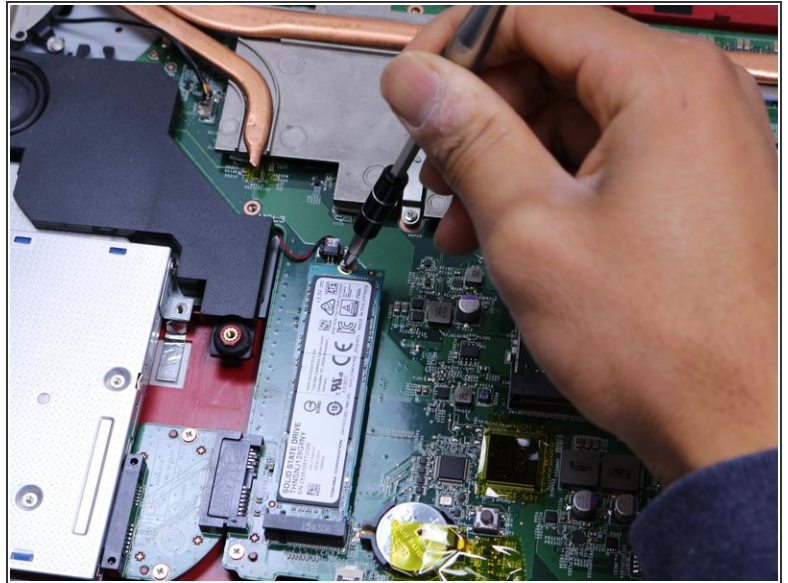
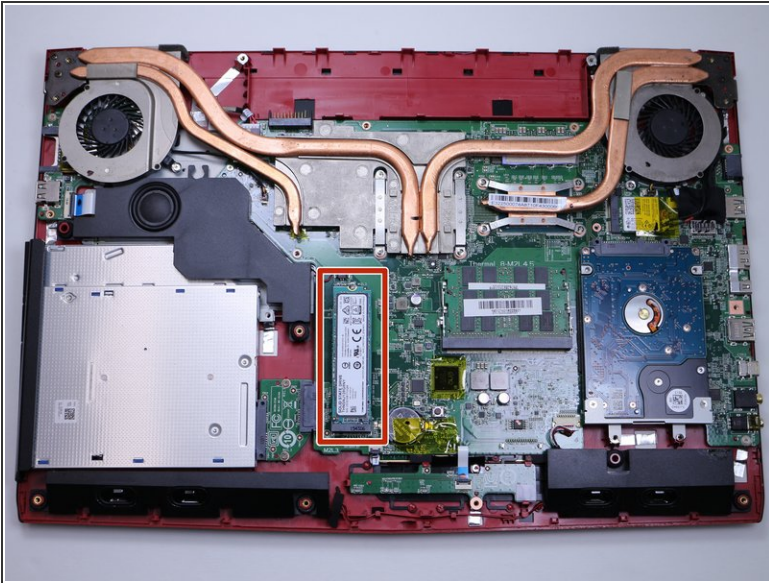
- Unscrew the single 5.5mm Phillips #1 screw keeping the battery secure.

Step 6



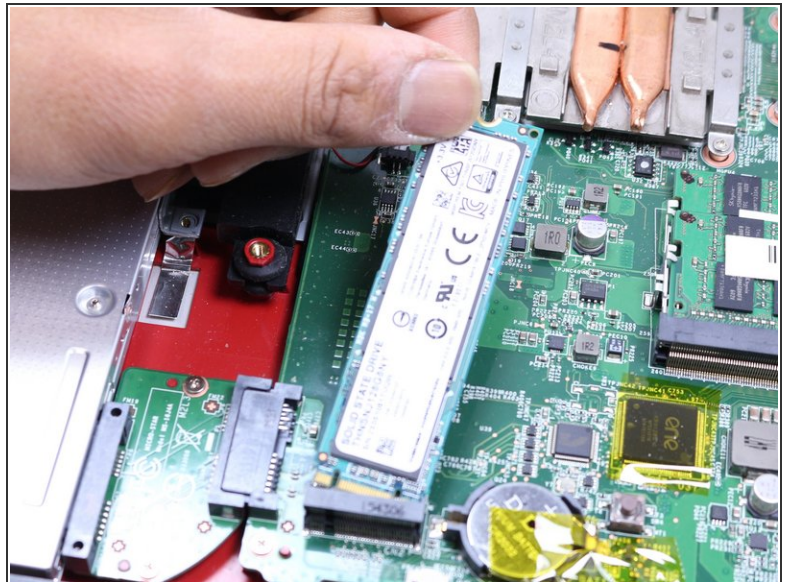
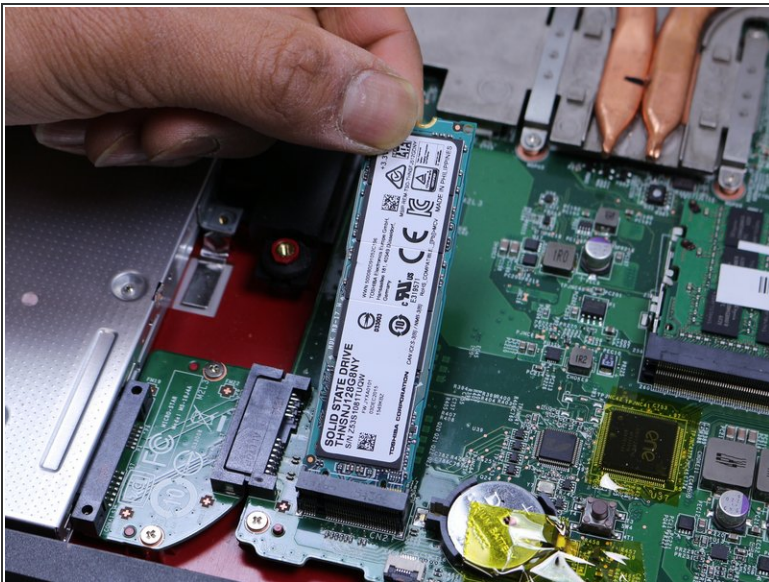
- Grab the battery with your fingers and gently pull it up and away from the rest of the laptop.

Step 7 — SSD



- Remove the single 5.5mm Phillips #1 screw attaching the SSD to the laptop.

Step 8



- Pull out the SSD by gently wiggling it from side to side until it comes out.
- ⓘ If the old SSD you removed contains the operating system, then the new SSD must also contain an operating system.

To reassemble your device, follow these instructions in reverse order.