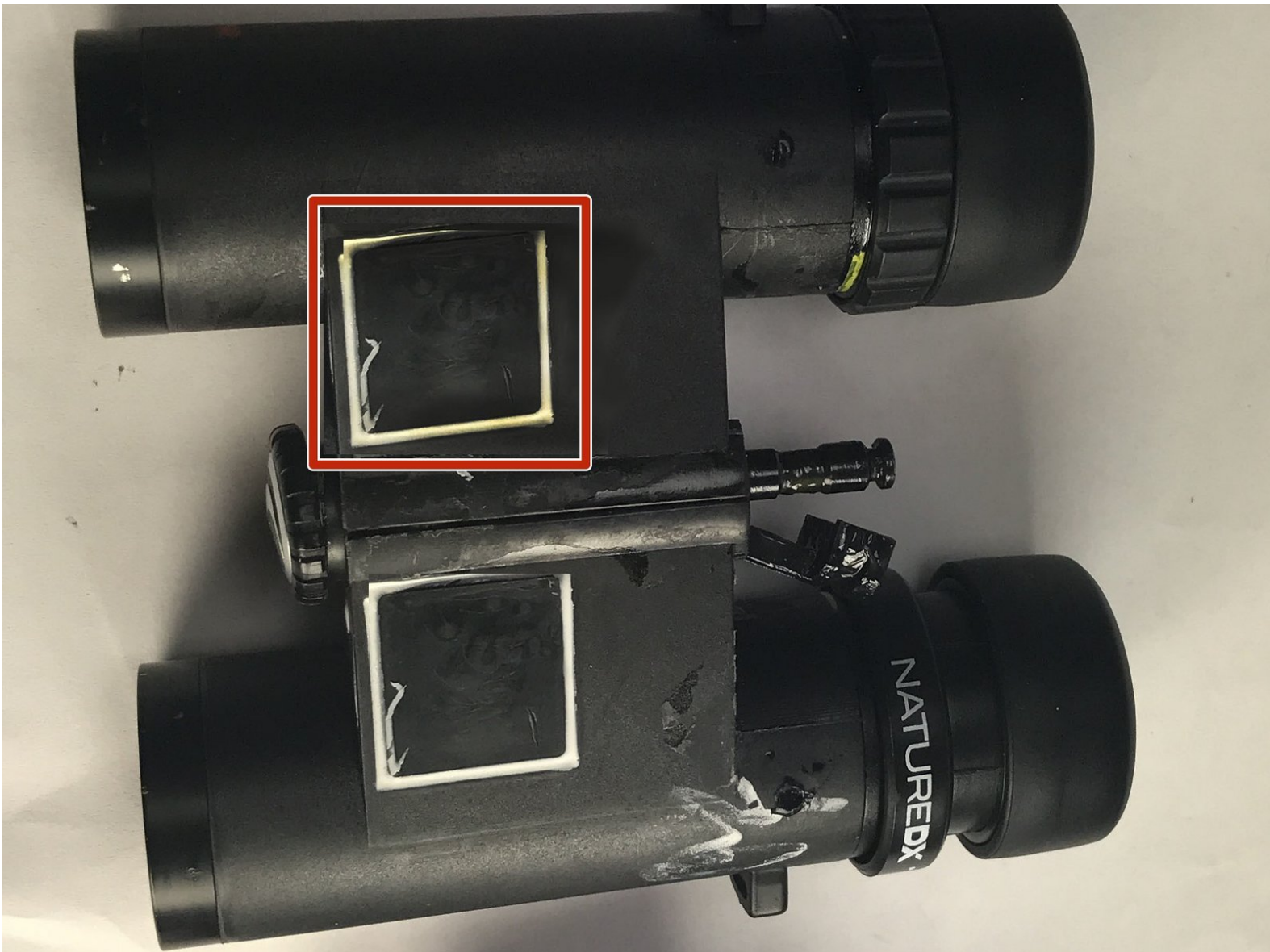




Celestron Nature DX Anchor Arm Replacement

Replacing the anchor arm.

Written By: Bryce Colangelo



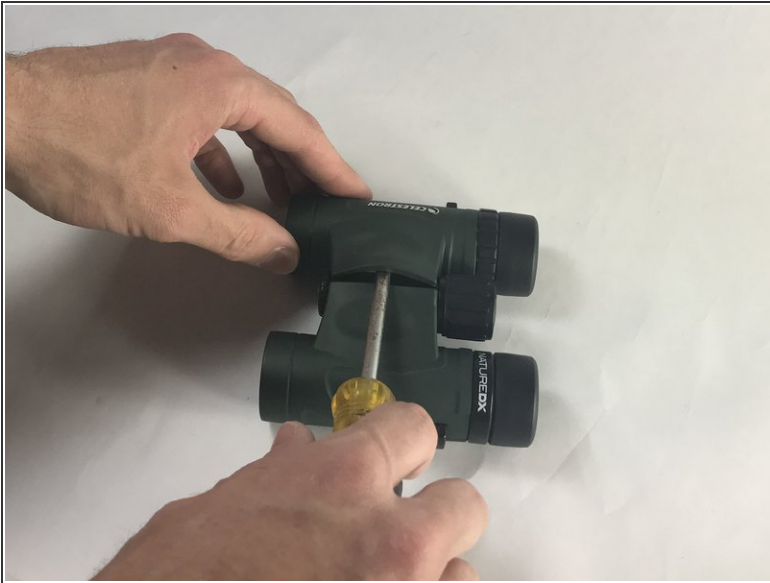
INTRODUCTION

This is a guide on how to replace the anchor arm. These arms connect the control arms to the lenses to adjust the focal length.

TOOLS:

- [Flathead Screwdriver](#) (1)
 - [Magnetic Pickup Tool](#) (1)
 - [Metal Spudger](#) (1)
 - [Sharp knife](#) (1)
-

Step 1 — Skin Cover



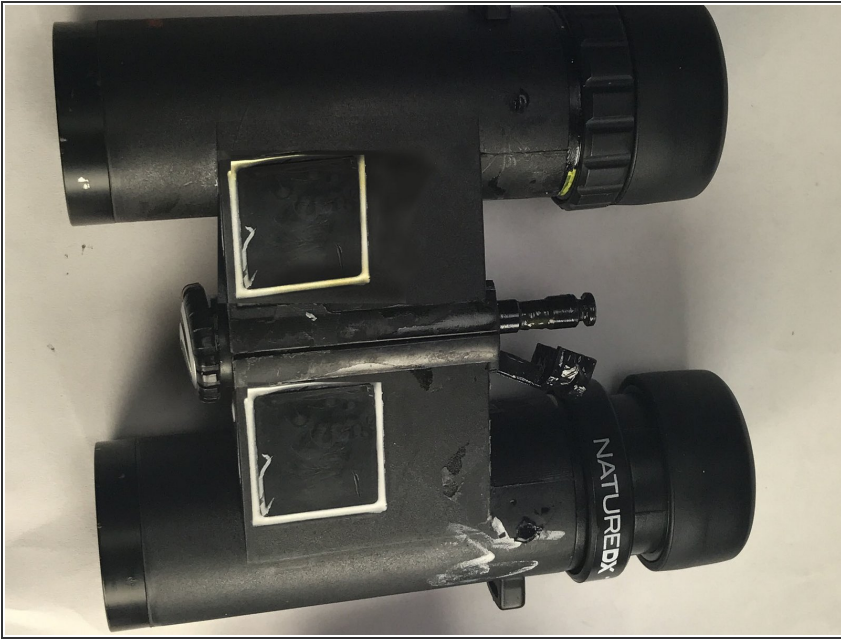
- Using a plastic opening tool, nylon spudger or metal spudger, pry into seam of the skin cover at the center of the device. Lightly lift the tool which should cause the skin cover to rise.

Step 2



- Start peeling the skin away from the center. Apply force as there is an adhesive substance that is binding the skin to the device. Continue peeling until skin cover slides off completely.

Step 3



- Repeat steps 1 and 2 for the other side.

Step 4 — Focus Knob



- Remove the top cover of the focus knob as shown. Simply twisting and pulling the cover will slide it off.

Step 5



- Use a magnetic pickup tool or magnetic screwdriver head to remove the guard. The guard should come right off without much resistance.

Step 6



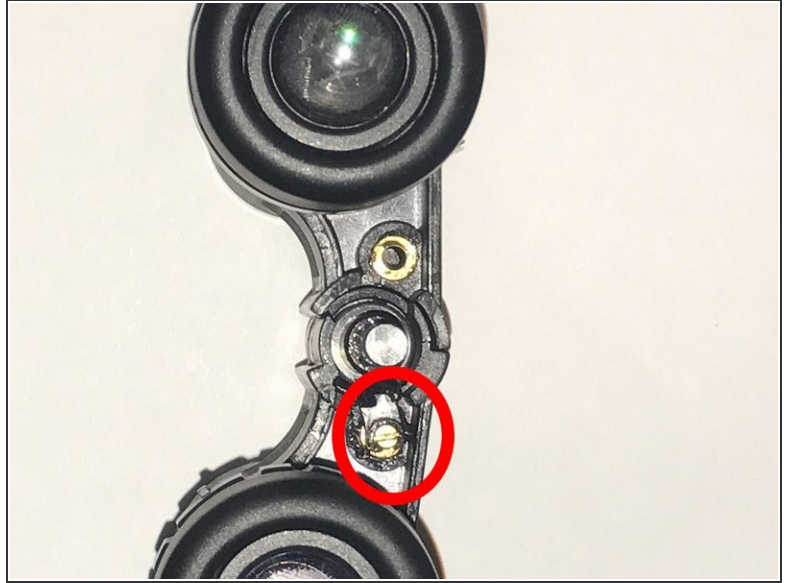
- Unscrew the focus knob. It should come off without much resistance or pressure.
- ⓘ Parts revealed will be heavily lubricated. Consider wearing gloves.

Step 7 — Control Arm



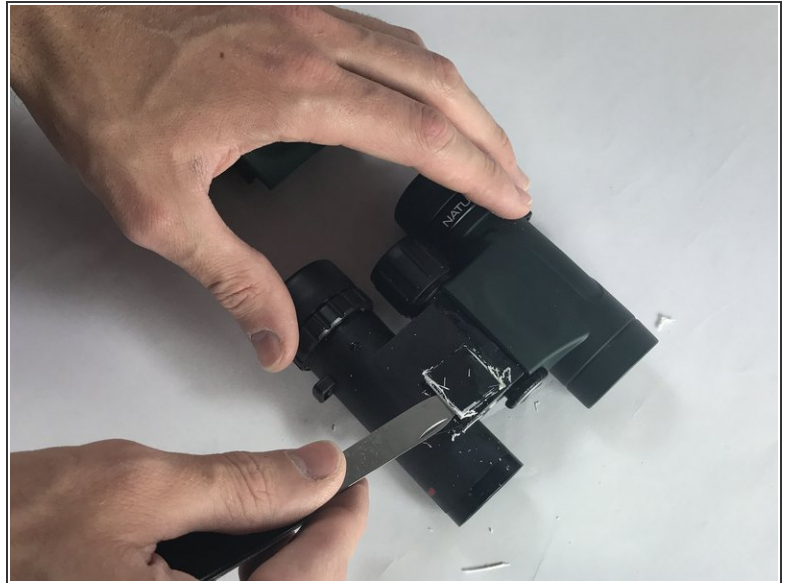
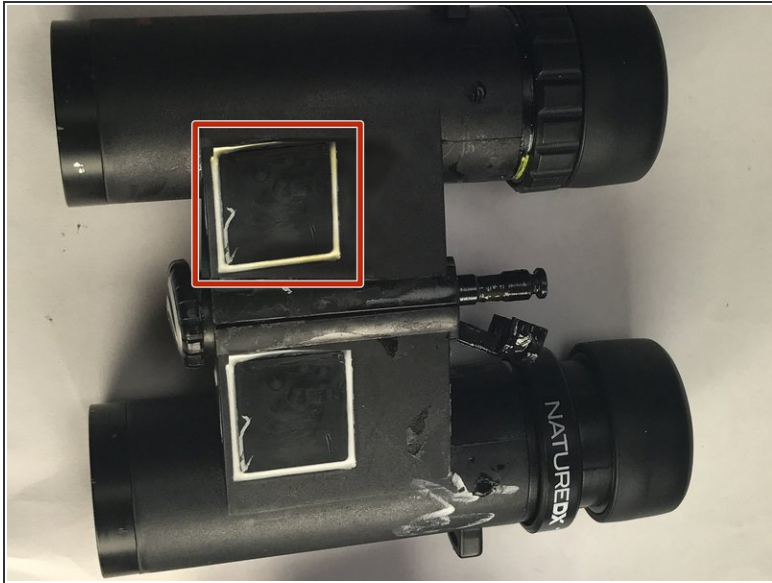
- Locate the panels in front of the binoculars between the middle axle and the viewing lens and simply pry them off with your fingers

Step 8



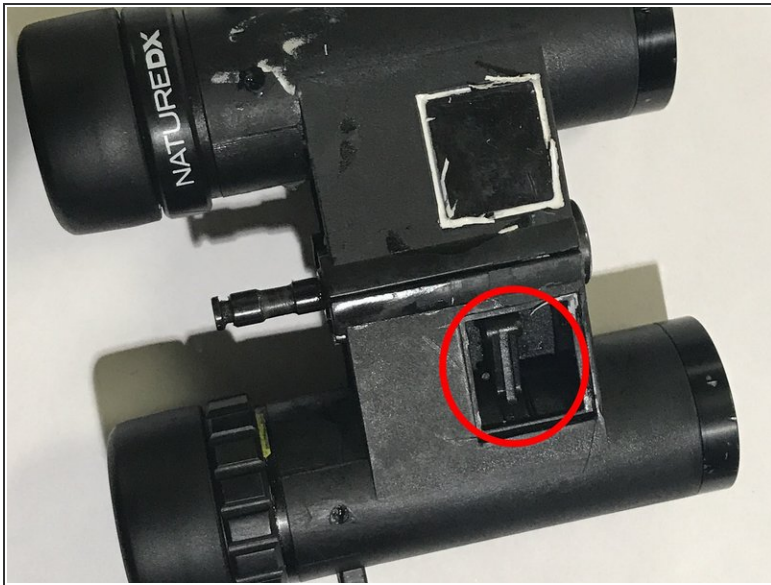
- Using a flathead screwdriver, unscrew the highlighted screwhead for the control arm.
- With your fingers, grab the screw head and pull it out completely once it's unscrewed and replace it with the new control arm if needed.
- ⓘ Parts revealed will be heavily lubricated. Consider wearing gloves.

Step 9 — Anchor Arm



- Identify the panel on the side you wish replace the anchor arm on, as marked on the photo.
- Cut the panel open with a knife. Cut the adhesive substance around the panel with the knife and then using said knife, you should be able to lift it off.

Step 10



- Identify the anchor arm. It is circled in red.
- Using the spudger, lift the anchor arm. It should come off without much resistance.
- Insert the new anchor arm into the now open slot.

To reassemble your device, follow these instructions in reverse order.