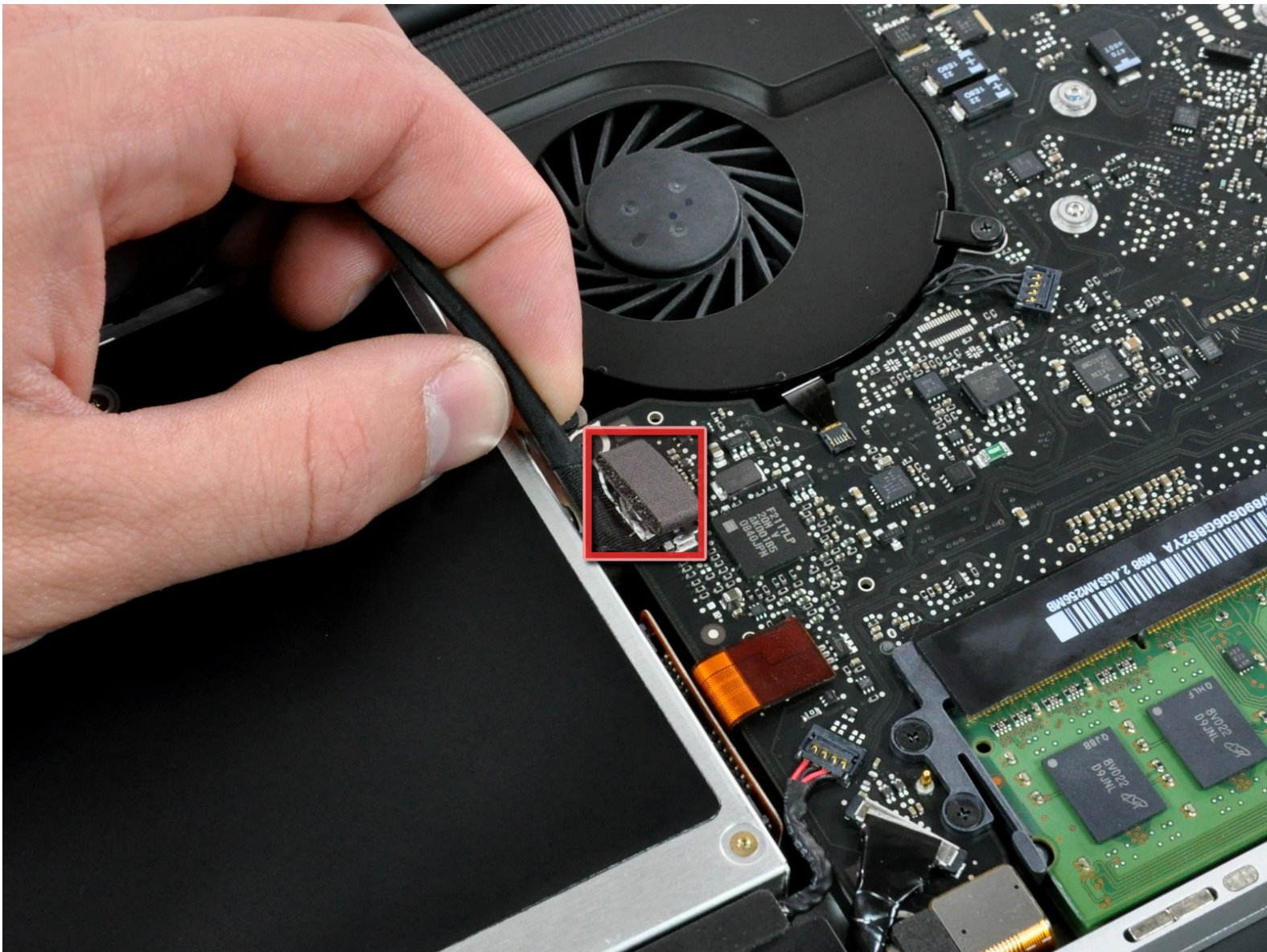




# MacBook Pro 15" Unibody Late 2008 and Early 2009 Optical Drive Replacement

Written By: Walter Galan

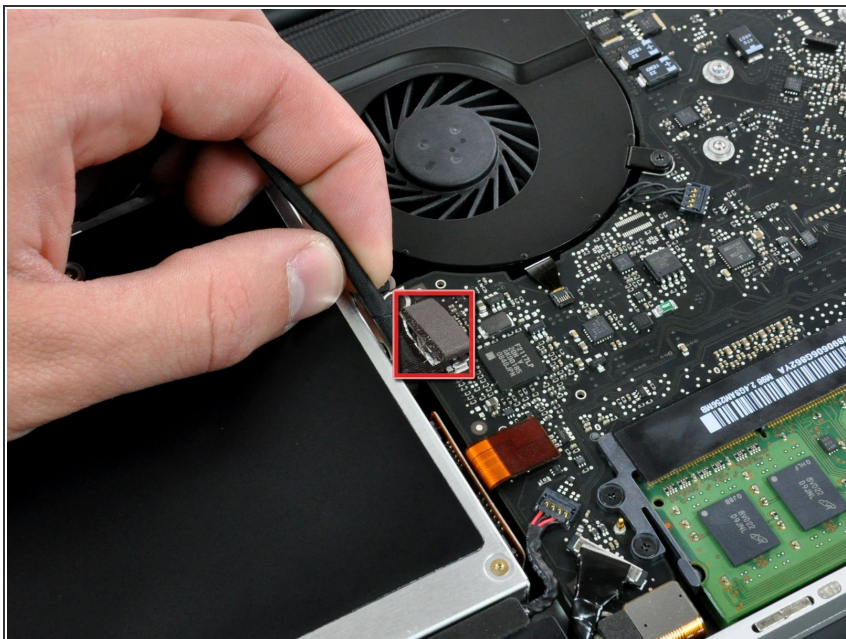




## TOOLS:

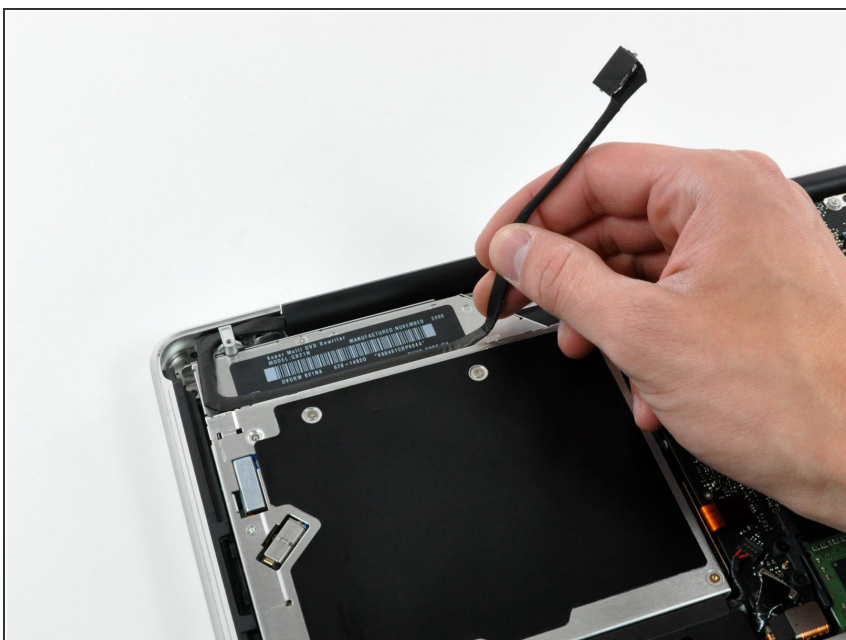
- [Phillips #00 Screwdriver](#) (1)
  - [Spudger](#) (1)
-

## Step 1 — Optical Drive



- Disconnect the camera cable by pulling the male end straight away from its socket.

## Step 2



- Deroute the camera data cable from the channel in the optical drive.

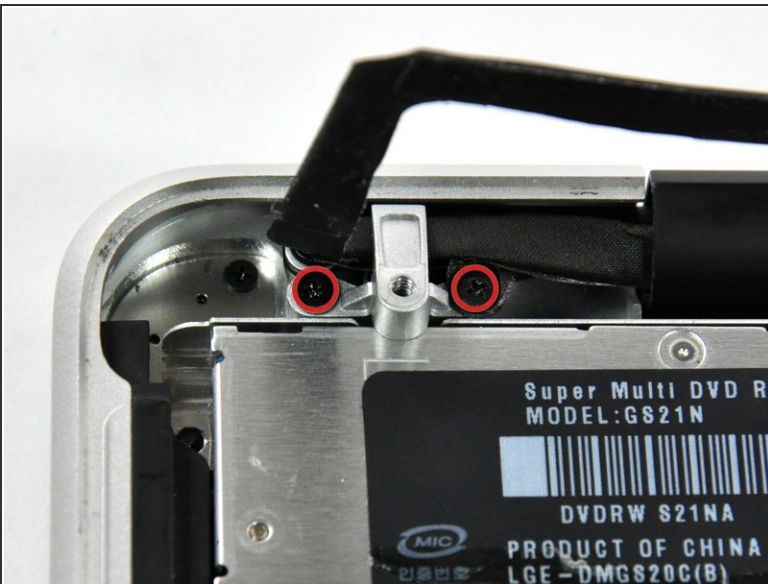


### Step 3



- Use a spudger to pry the optical drive connector straight up off the logic board.

### Step 4



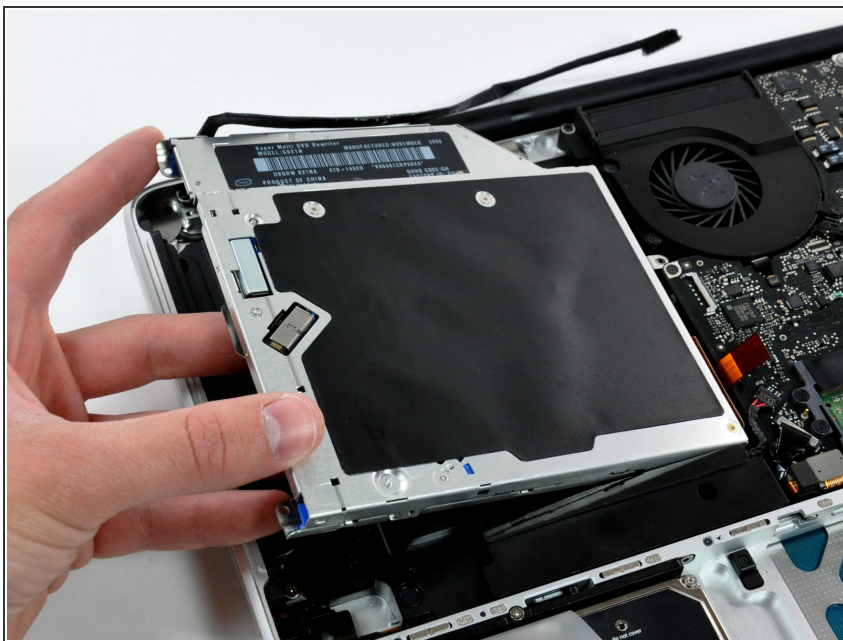
- Remove two 8 mm Phillips screws securing the camera cable bracket to the upper case.
- ⓘ The rightmost screw may remain captive in the camera cable.
- Lift the camera cable bracket out from the upper case.

## Step 5



- Remove the following three Phillips screws securing the optical drive to the upper case:
  - One 3.5 mm Phillips screw.
  - Two 2.5 mm Phillips screws.

## Step 6



- Lift the optical drive from its left edge and pull it out of the computer.

To reassemble your device, follow these instructions in reverse order.