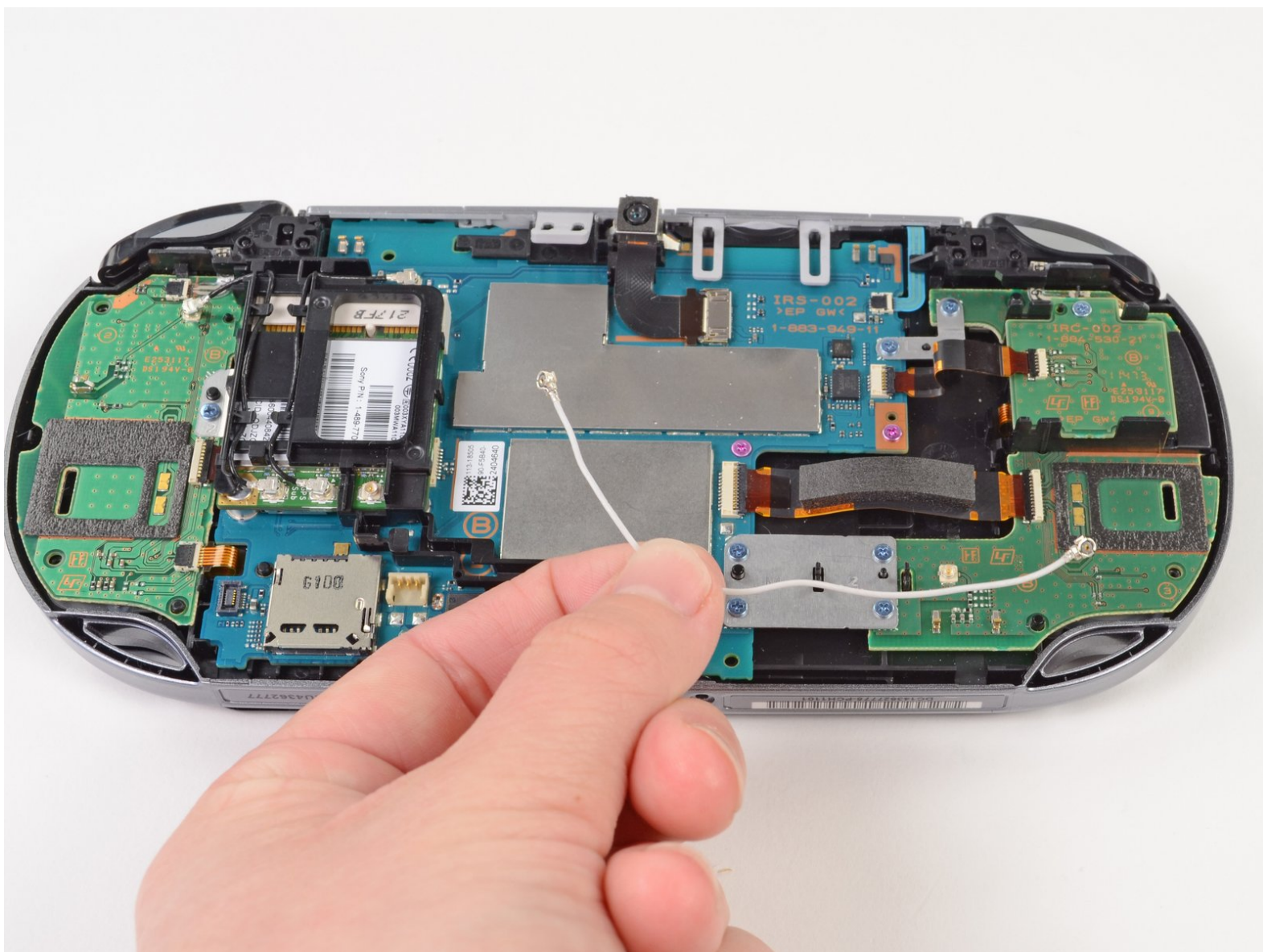




PlayStation Vita Wi-Fi Antenna Replacement

Install the Wi-Fi antenna on the PlayStation Vita.

Written By: Brittany McCrigler



INTRODUCTION

This guide takes you through the process of installing the Wi-Fi antenna on the PlayStation Vita. This is the white antenna cable on the right side of the wireless card.



TOOLS:

- [Phillips #00 Screwdriver](#) (1)
- [iFixit Opening Tools](#) (1)
- [Spudger](#) (1)



PARTS:

- [PlayStation Vita \(3G\) Wi-Fi Antenna Cable](#) (1)

Step 1 — Case Separation



⚠ Power off and remove the memory card.

- Using a Phillips #00 screwdriver, remove the four 6.4mm screws on the back casing.

Step 2



- Using your fingernail or a spudger, pry open the accessory port cover on the top of the device.
- Using a Phillips #00 screwdriver, remove the two 5.4mm screws hidden beneath the accessory port cover.

Step 3



- Remove the two 5.4mm Phillips #00 screws on the bottom of the device near the charging port.

Step 4



- Beginning at the sides of the device, use a plastic opening tool to separate the front and rear cases.
 - Continue working your way around the device gently prying it open.
- ⚠ There are still wires holding the front and rear cases together. You may damage the connections if you yank the cases completely apart.

Step 5



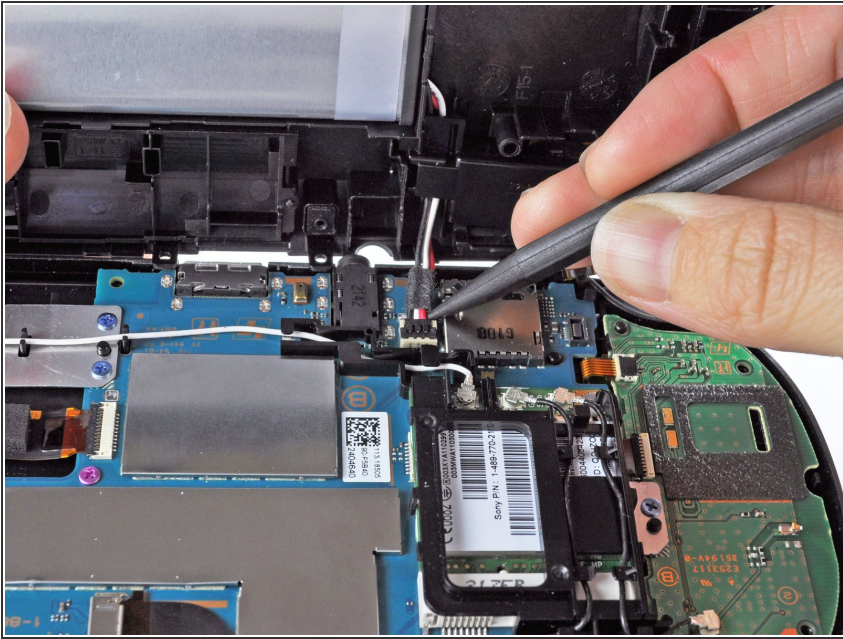
- Gently separate the two cases, minding the battery and the touch screen controller connectors holding the two cases together.

Step 6



- Using a spudger, free the touch screen controller flex cable by gently prying up the connection.

Step 7



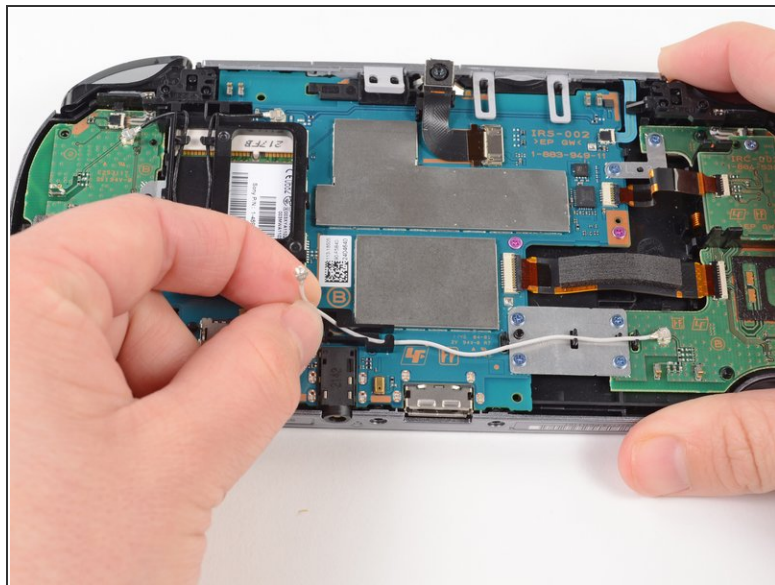
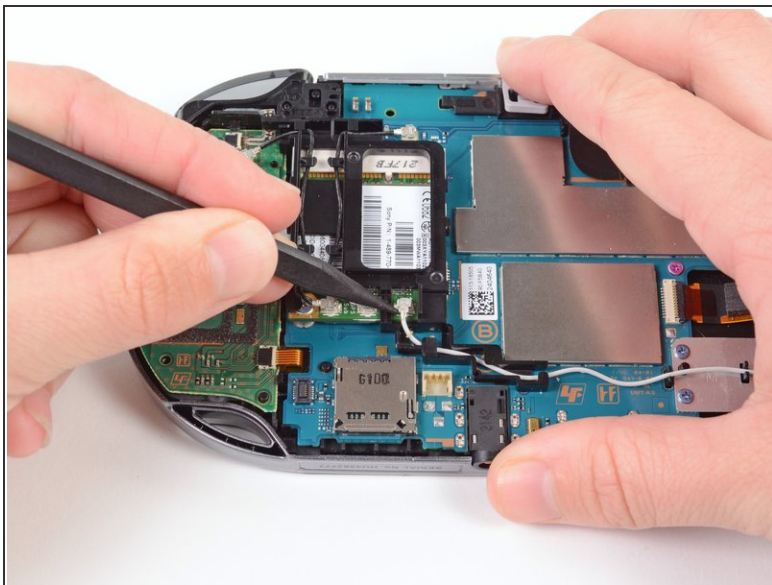
- Free the battery cable by gently prying up on the connection with a spudger.

Step 8



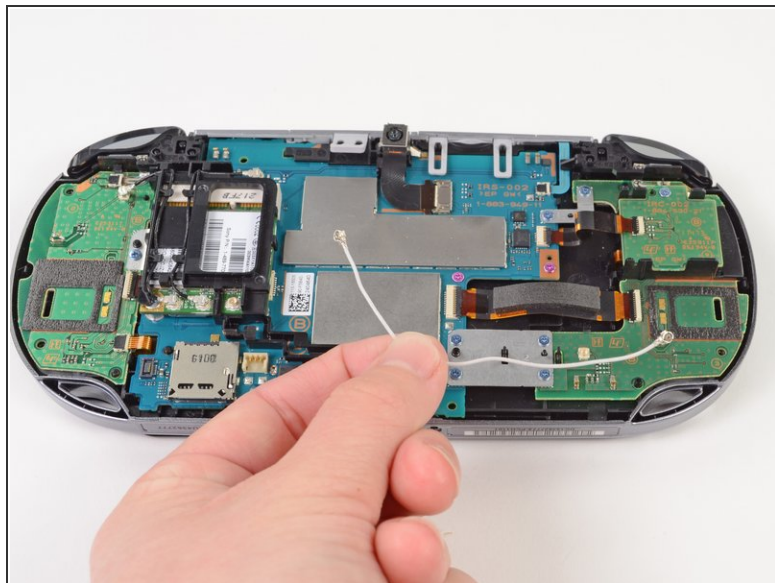
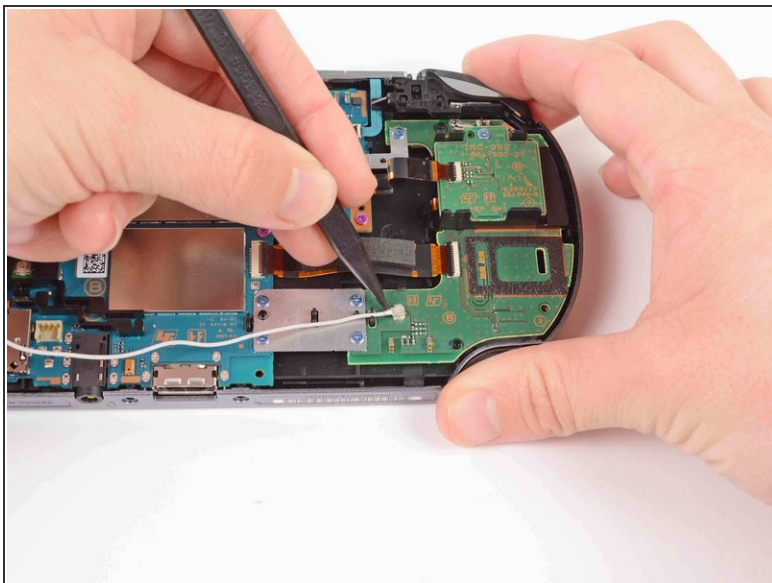
- Separate the front and rear cases.

Step 9 — Wi-Fi Antenna



- Using the pointy end of a spudger, gently pry the white Wi-Fi antenna cable connector off of the wireless card.
- Deroute the Wi-Fi antenna cable out of the black plastic casing.

Step 10



- Using the pointy end of the spudger, gently pry the Wi-Fi antenna cable connector off of the left button board at the connection.
- Remove the Wi-Fi antenna cable.

To reassemble your device, follow these instructions in reverse order.