



Canon PowerShot SX530 HS Lens Replacement

This guide shows how to replace the Lens of the...

Written By: Joel groff



INTRODUCTION

This guide shows how to replace the Lens of the Canon PowerShot SX 530 HS.



TOOLS:

- [Phillips #000 Screwdriver](#) (1)
 - [iFixit Opening Tool](#) (1)
 - [Tweezers](#) (1)
-

Step 1 — Battery



- Flip the camera upside down to find the battery compartment (marked CARD/ BATT. OPEN).
- Press into the grooves of the battery door and slide the panel in the direction of the arrow.

Step 2



- Gently press down on the orange release button found inside.
- After pressing the release button, pull the battery out of the camera.

Step 3 — Canon PowerShot SX530 HS Back Panel Assembly



- Flip over the camera.
- Use a Phillips PH000 to remove the two 4mm screws near the center of the camera.
- Use a Phillips PH000 to remove the two 6mm screws on the ends of the camera.

Step 4



- Locate the left side of the camera.
- Use a Philips PH000 to remove the two 6mm screws.

Step 5



- Rotate the camera to the side with the removable cover containing the HDMI and mini USB ports.
- Use the Phillips PH000 to remove the 7mm screw located next to the HDMI port. This screw has red loctite.
- Use the Phillips PH000 to remove the 4mm screw near the USB port.
- Use the Phillips PH000 to remove the 7.4mm screw near the USB port.

Step 6



- Rotate the camera to locate the side with the LCD screen.
- Use a Phillips PH000 to remove the two 6mm screws above the LCD screen.
- Once the screws are out the back panel, it is ready to be taken off. Grip the backside of the camera and pull it away evenly on every side. The backside must come off straight from the front.

Step 7 — Shutter Back Cover



- Remove the two screws (5-6mm) on the left and right side of the shutter panel with a Phillips PH000 screwdriver.

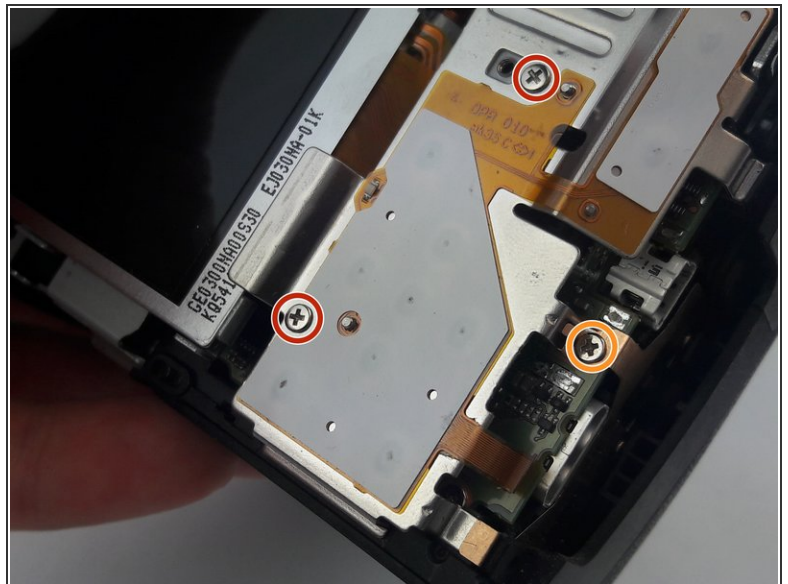
Step 8



- Lift the shutter light and pull the shutter back panel off the camera.

⚠ Be careful when pulling out the panel because it is connected to the motherboard.

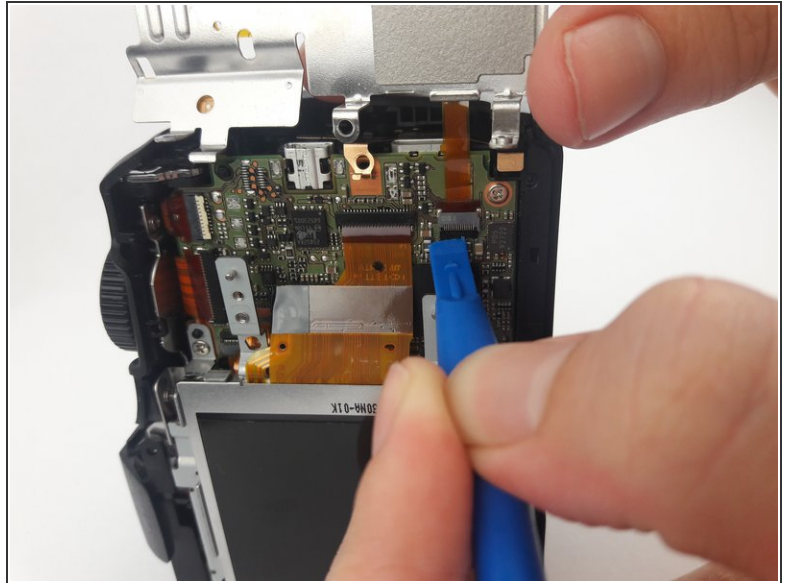
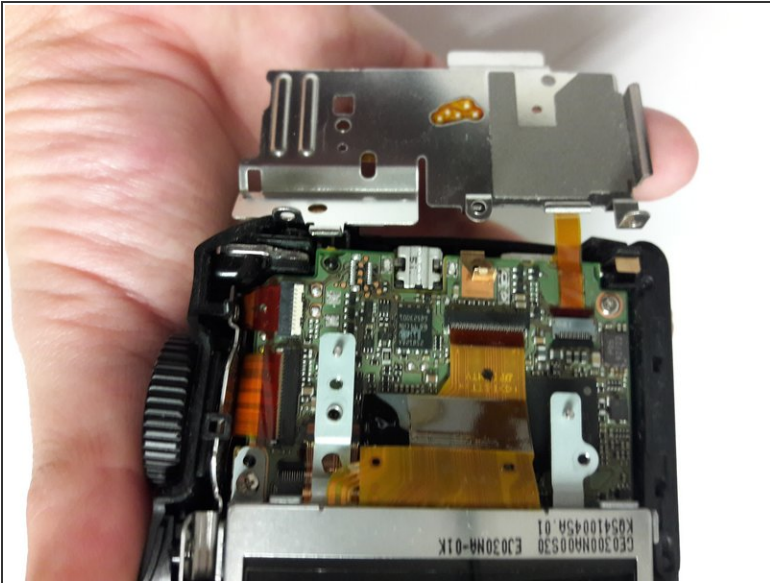
Step 9 — Internal Button Sensor Plate



- Locate the Internal Button Sensor Plate. This is the white and silver plate to the right of the LCD Display.
- Use a Phillips PH000 to remove the two 3mm screws on the panel.
- Use a Phillips PH000 to remove the 3mm screw connected to the motherboard.

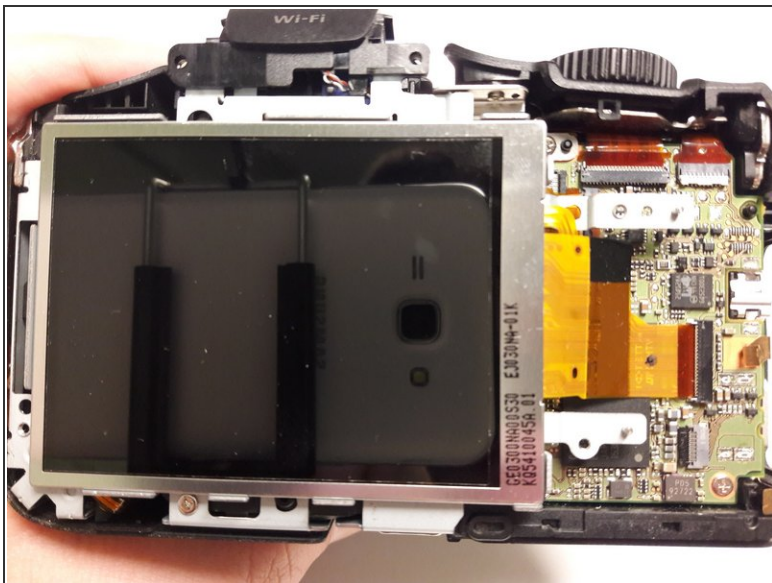
This document was generated on 2022-11-03 09:51:13 PM (MST).

Step 10



- Peel off the plate. Be careful, as the plate is connected to the motherboard underneath by a ribbon.
- Use a plastic opening tool to unlock the ribbon tape.
- Remove the ribbon tape from the motherboard.

Step 11 — LCD Display



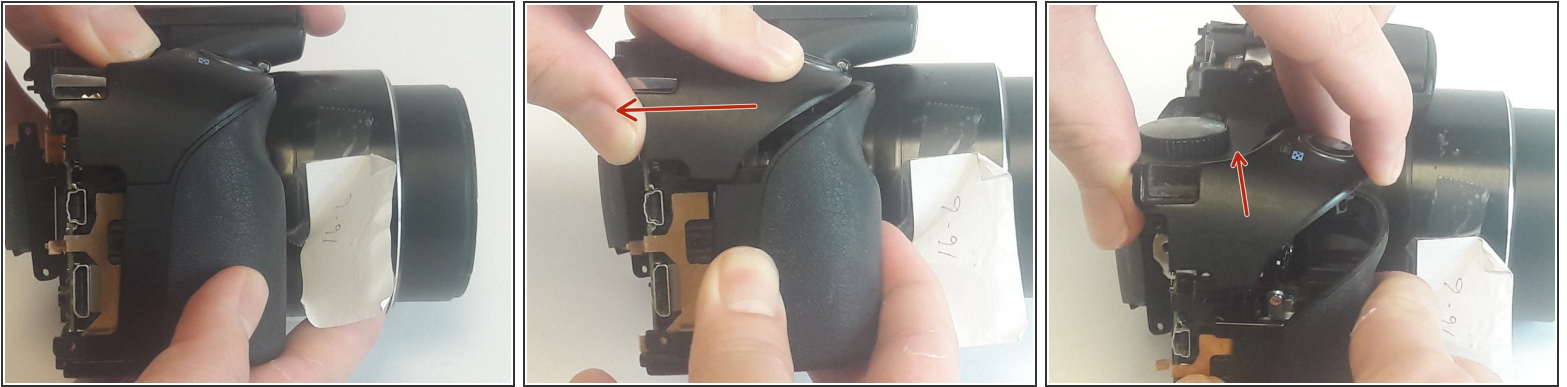
- Locate the Display screen in the center of the camera.
 - Use a plastic opening tool to pry off the LCD screen. Start on the bottom left corner—this is the furthest away from the ribbon holding it down on the right side.
- ☑ The adhesive holding down the display should be strong enough to put the display back on.

Step 12



- Use a plastic opening tool to unlock the ribbon tape.
- Remove the ribbon tape from the motherboard.

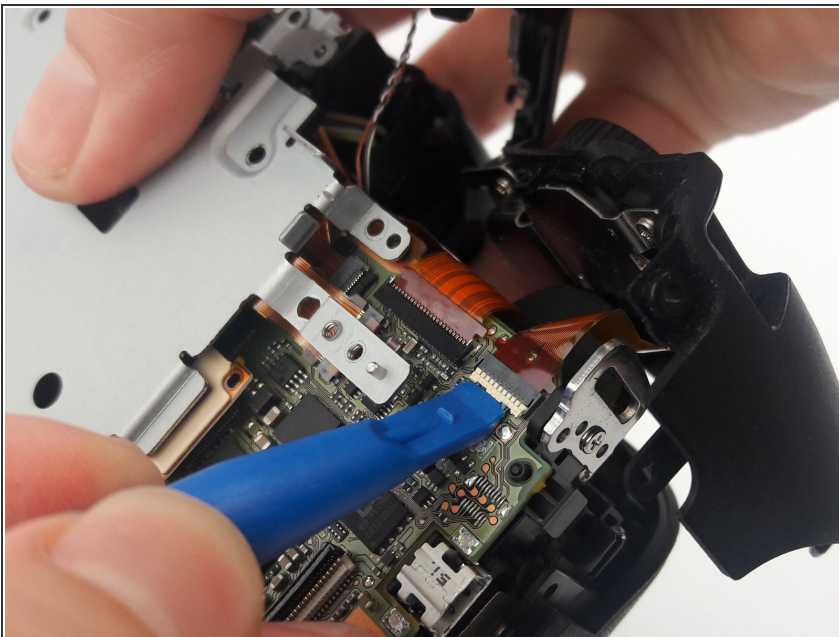
Step 13 — Shutter Release Cover



- Hold the camera by the bottom or place the camera on a firm flat surface and keep a firm grip on the device.
- Once a comfortable hold is established, gently pull the cover towards the rear of the camera. Then lift directly upwards on the cover to remove it.

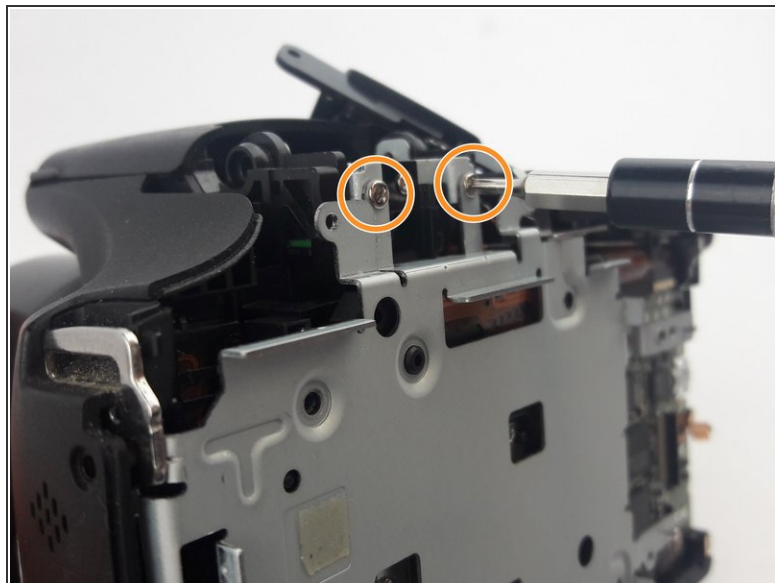
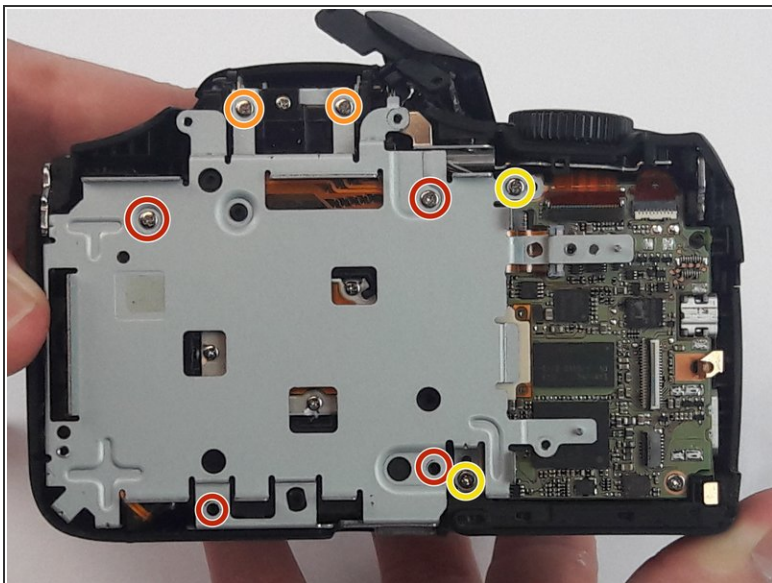
⚠ Do not pull the cover off too hard to the point that you might accidentally tug on the ribbon tape.

Step 14



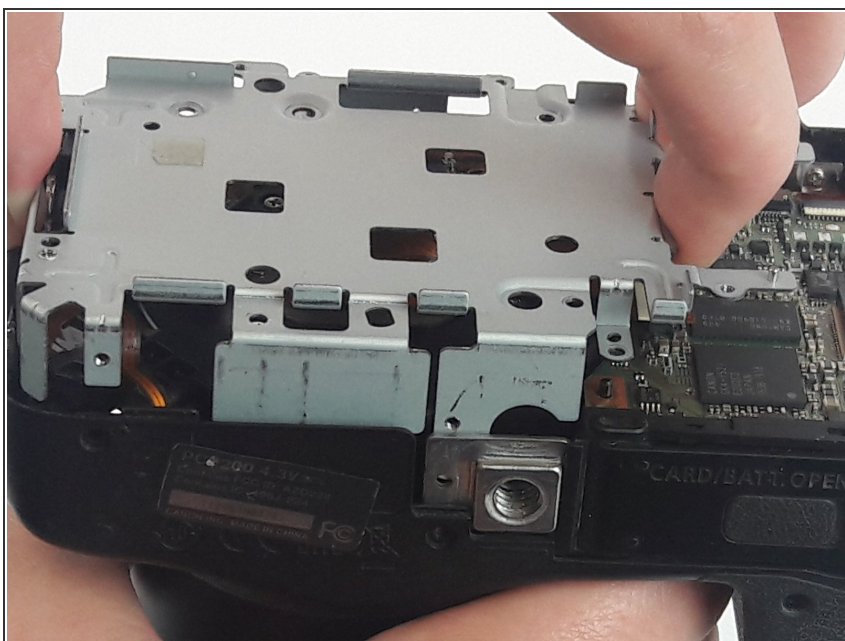
- Once the cover is loose from the device, use a plastic opening tool to unlock the ribbon tape.
- Remove the ribbon tape from the motherboard.

Step 15 — Internal Metal Frame



- Use a PH000 screwdriver to remove the four 3.5 mm screws holding the plate in place.
- Use a PH000 screwdriver to remove the two 2.5 mm screws holding the top of the plate.
- Use a PH000 screwdriver to remove the two 4.5 mm screws connecting the plate to the motherboard.

Step 16



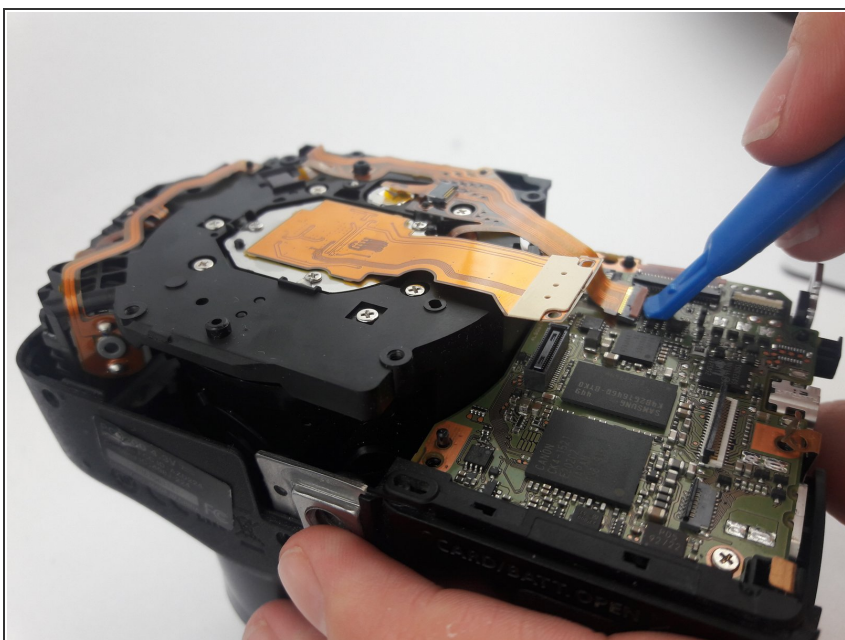
- Gently pull the plate up and away from the camera.
- ⓘ Part of the plate extends inside the camera beneath the shutter, so be sure to not angle the plate as you pull.

Step 17 — Lens



- Use tweezers to pull the large ribbon cable connecting the back of the lens to the motherboard.

Step 18



- Use a plastic opening tool to unlock the ribbon tape.
- Remove the ribbon tape from the motherboard.

Step 19



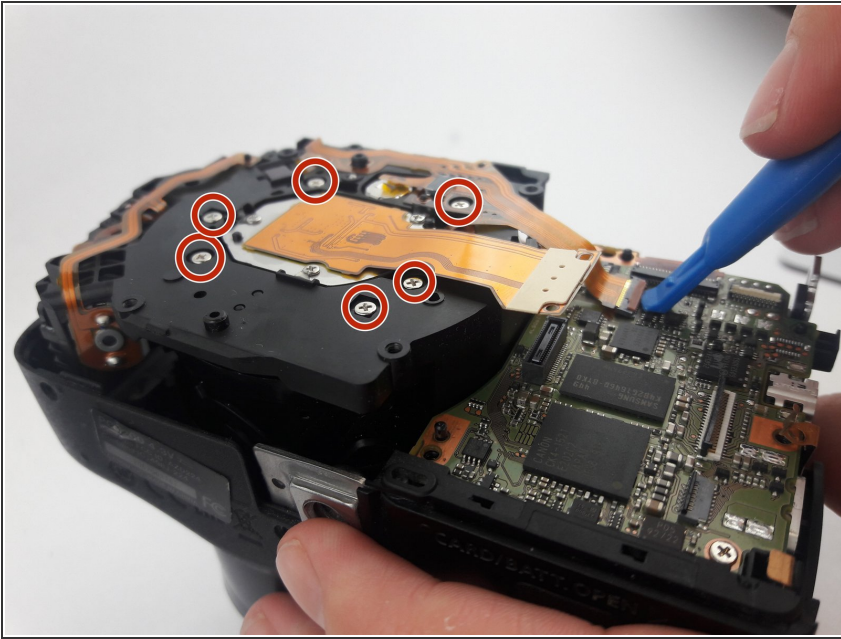
- Pull the lens partly away from the camera to reveal another ribbon cable connecting the lens to the motherboard.
- Use a plastic opening tool to unlock the ribbon tape.
- Remove the ribbon tape from the motherboard.

Step 20



- Pull the lens, the entire piece to the left of the motherboard, out of the camera.

Step 21 — Further Troubleshooting



- Follow this [lens replacement video](#) for further dissection of the lens. Continue if lens is fine.
 - Remove the six 3.5mm screws to remove the motherboard from the lens.
 - There are another 3 parts inside the lens that will need realignment upon reassembly. The motor's worm gear will line up with the rack on the outer assembly.
- i** Ensure lens is able to move and rotate for reassembly.

To reassemble your device, follow these instructions in reverse order.