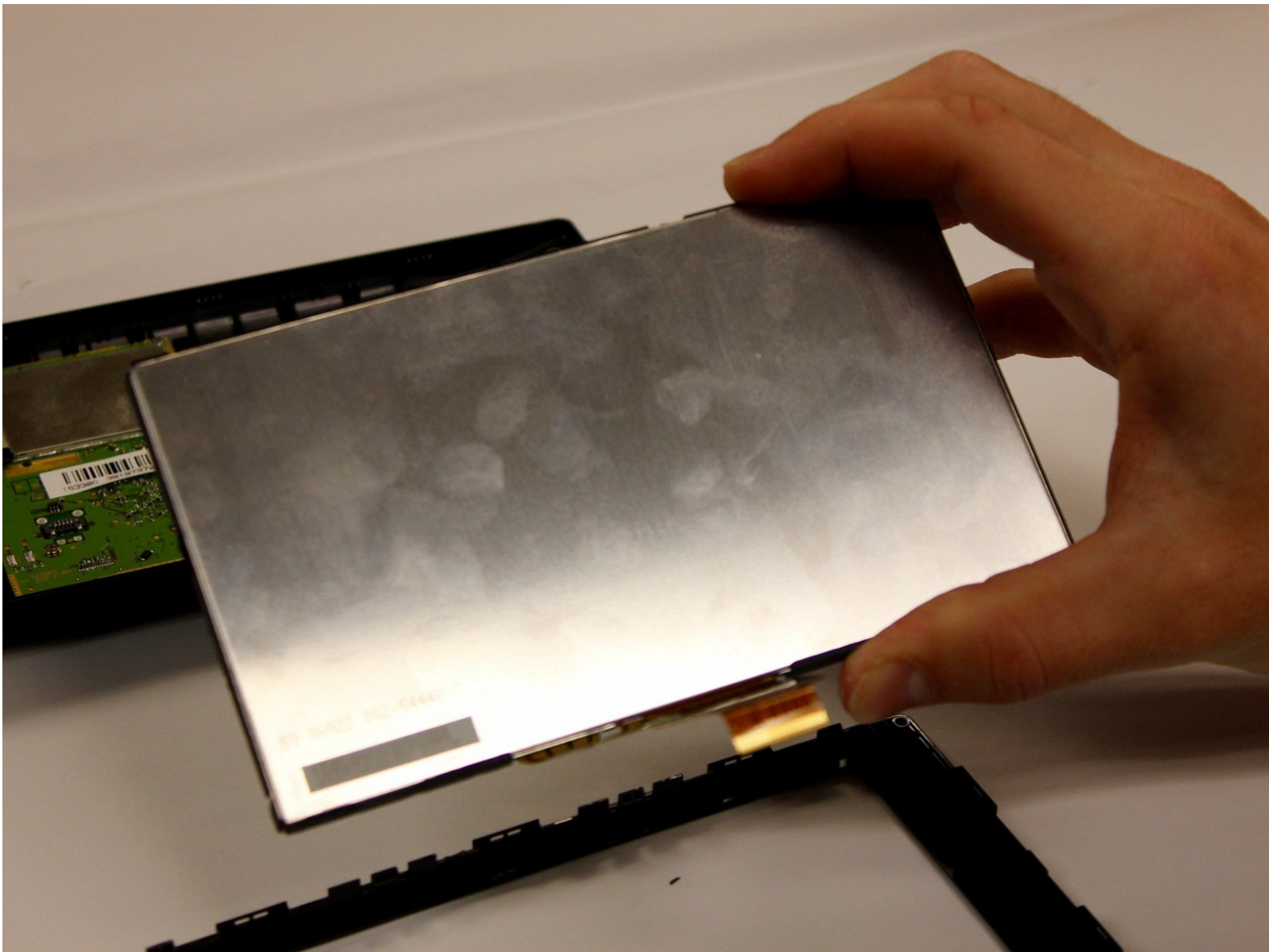




Garmin Drive 60LM Screen Replacement

This guide will show you how to efficiently and safely replace the screen in your Garmin Drive 60LM.

Written By: yuanhao zu



INTRODUCTION

To replace the screen in your device you will need a T4 Torx screwdriver, a metal spudger, a plastic spudger, and a replacement screen. Be sure to have a large workspace to avoid mishandling or damaging the device components.



TOOLS:

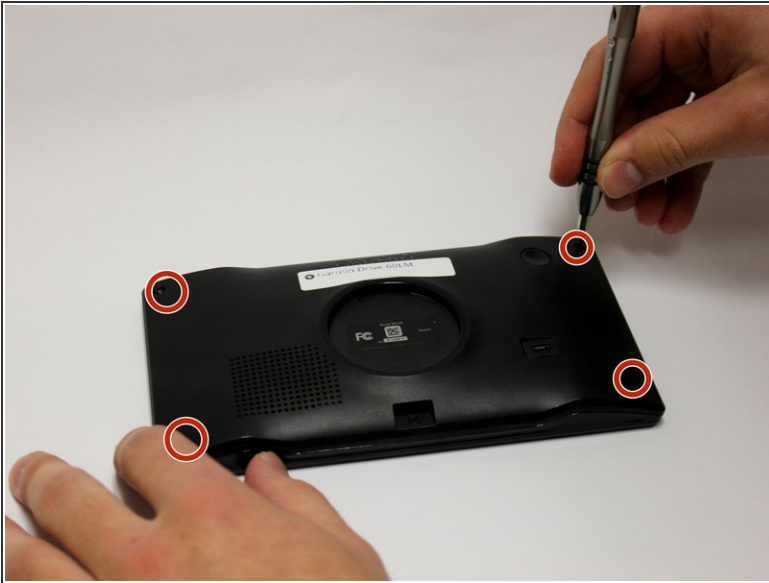
- [T4 Torx Screwdriver](#) (1)
- [Metal Spudger](#) (1)
- [Spudger](#) (1)



PARTS:

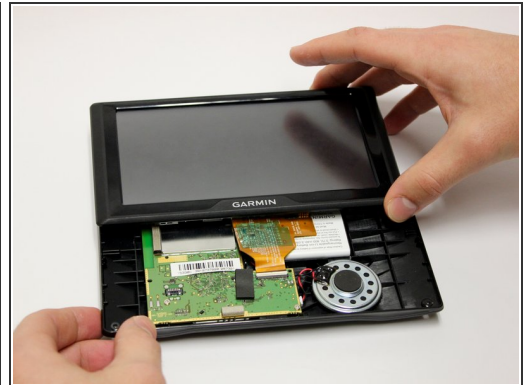
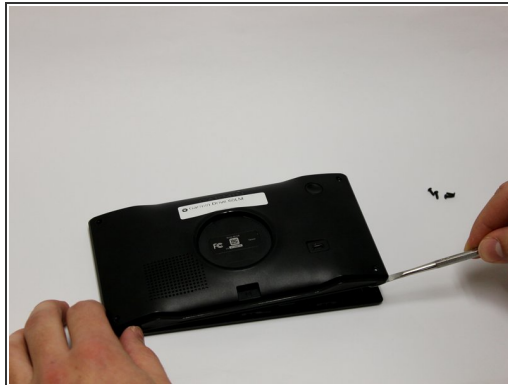
- [Screen Replacement](#) (1)

Step 1 — Screen



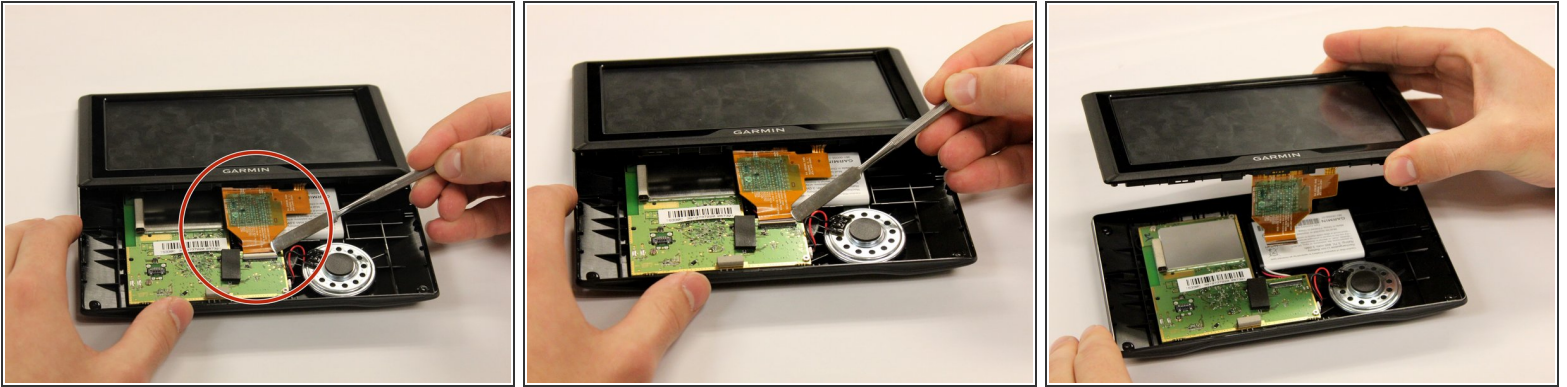
- Using the T4 Torx screwdriver, unscrew all four of the screws (1/4 inch, 6.35 mm) from the back panel of your device.

Step 2



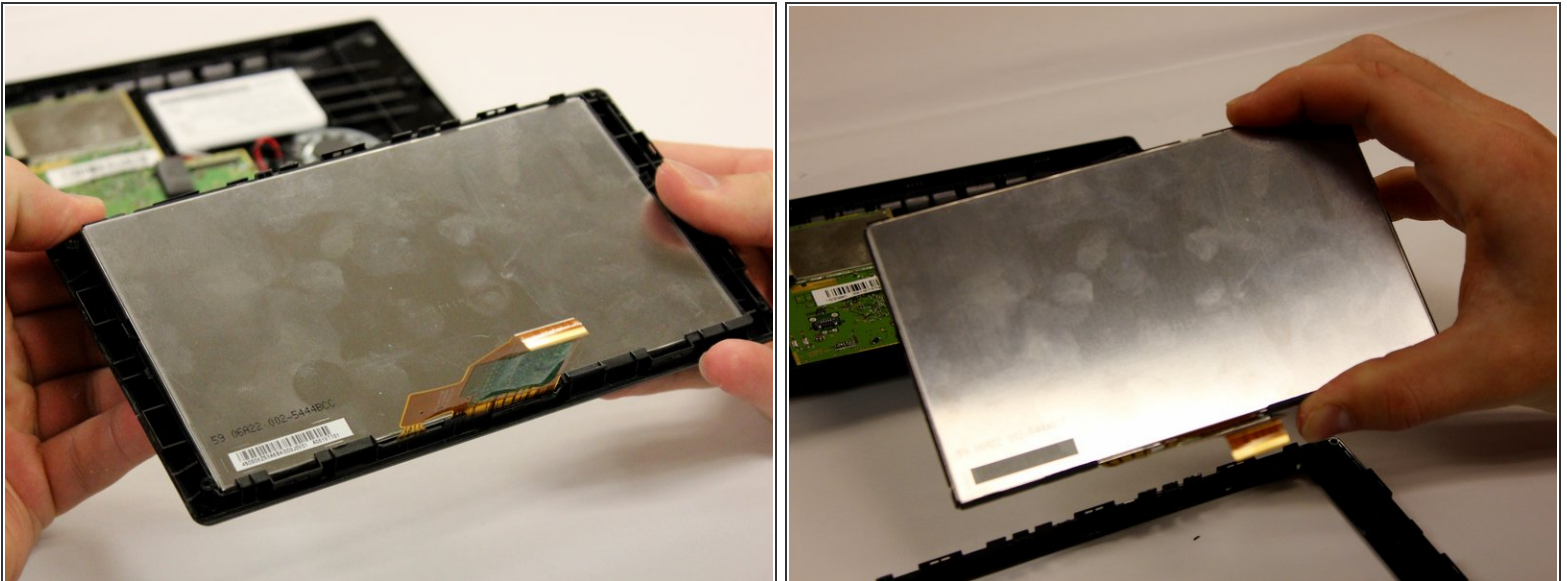
- Remove the back panel using the metal spudger tool.
- ⚠ The metal spudger tool can cause damage to internal components.
- Flip the device over with the screen facing upward and open the device.

Step 3



- Use a plastic spudger to flip up the white clamp holding the orange ribbon in place to the motherboard.
 - Lift the screen and orange ribbon away from the motherboard.
- ⚠ The metal spudger pictured is not ESD safe. Use a plastic spudger instead.

Step 4



- Carefully unsnap the plastic border surrounding the screen.

To reassemble your device, follow these instructions in reverse order.