



# Suzuki GSXR 1000 K4 battery replacement

Installing or replacing the battery after the winter break.

Written By: Bianca Mueller





## TOOLS:

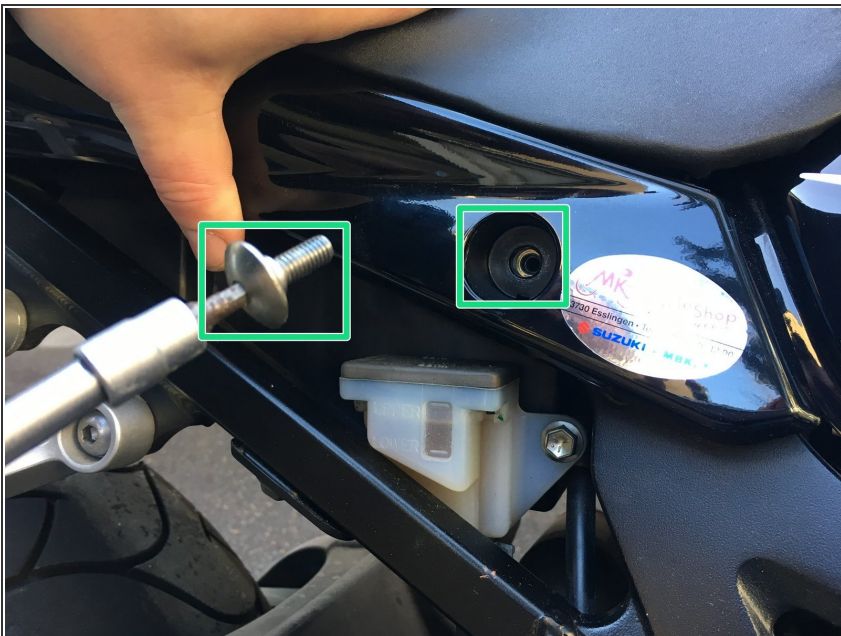
- PH 3 Schraubenzieher, Ringschlüssel oder Steckschlüssel Gr.10 und einen Inbusschlüssel Gr. 4 (1)

## Step 1 — Battery



- Suzuki GSXR 1000 K4

## Step 2



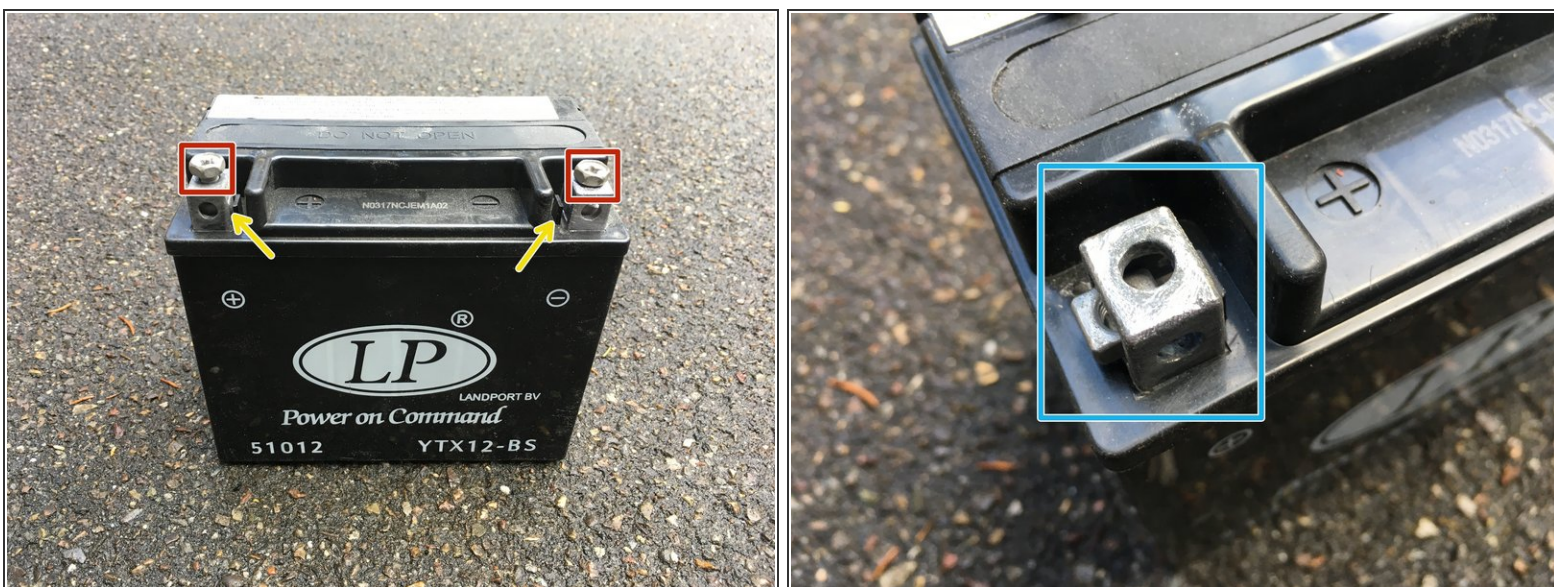
- First you have to remove the screws with an Imbus key (size 4) on the left and right side.

### Step 3



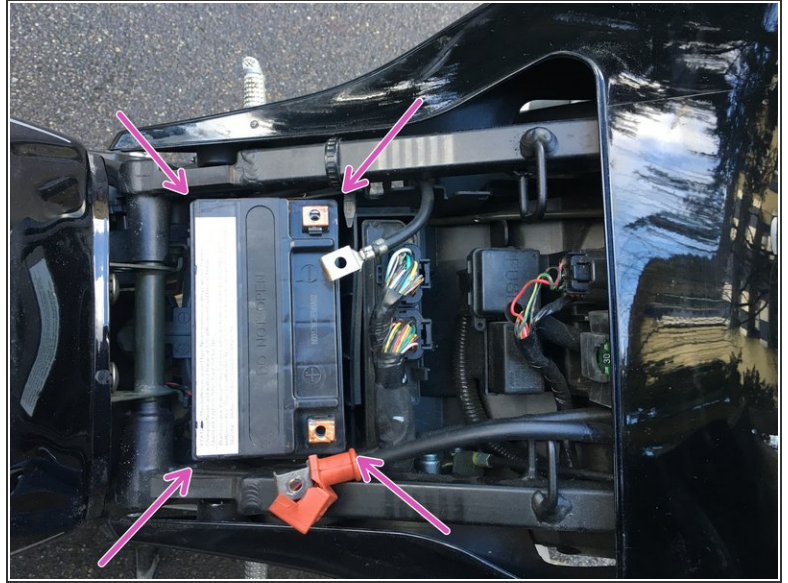
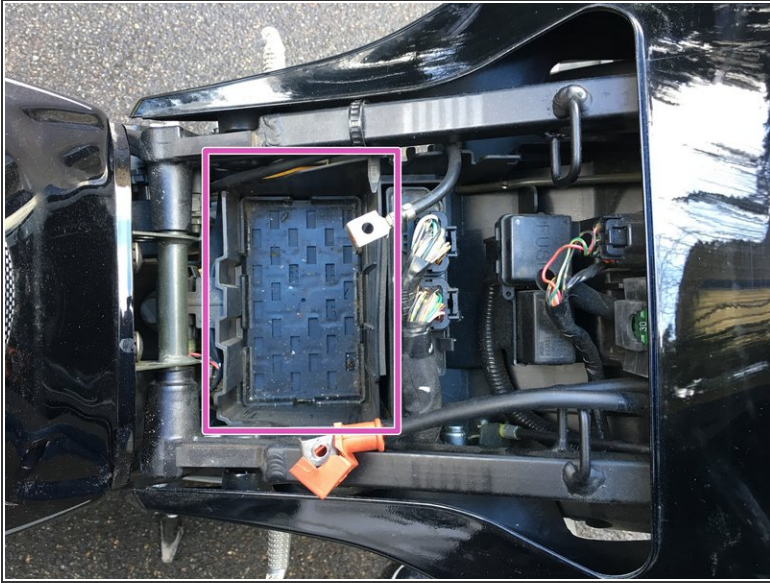
- You can now completely remove the seat.

### Step 4



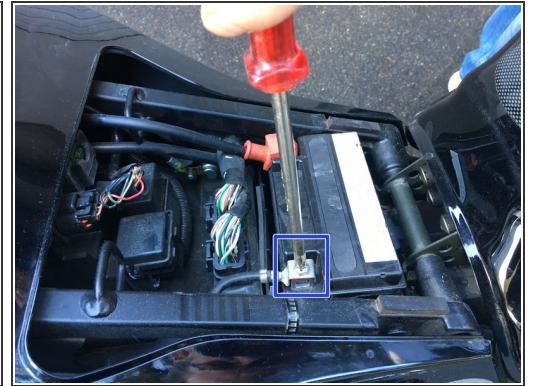
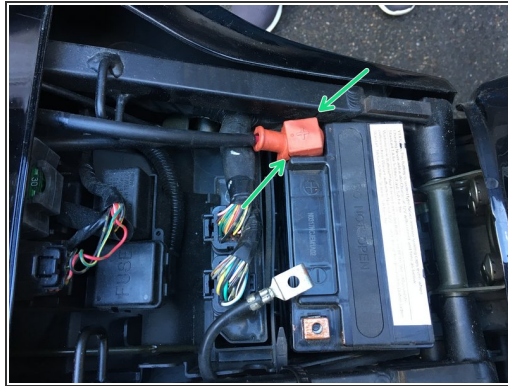
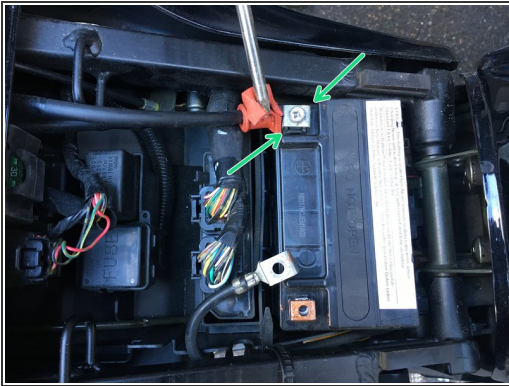
- The screws can now be removed from the battery with a screwdriver PH 3 (alternatively a wrench or a socket wrench size 10 can be used).
- Attention! There are nuts under the screws. These are not attached, so care must be taken when removing the screws that the nuts are not lost.
- Before installation, both battery poles should be treated with polar grease or polish spray. Otherwise it can lead to corrosion, which can lead to contact problems.

## Step 5



- You can now seat the battery in its slot

## Step 6



⚠ Before the battery can be reconnected all power consumers (light, ignition, etc.) must be shut off.

⚠ To prevent a short circuit and other damage to the motorcycle, make sure that the positive pole must first be connected !!!!!

- After the positive pole is attached, it should be protected with the cover provided. If the cover is defective, it must be replaced. This protection is also a relevant criterion for TÜV.
- After the plus pole is attached and protected, the negative pole can be attached.

To put the device back together follow the steps in reverse order.