



# iRobot Mint 4200 Wheel Motor Replacement

This guide will show you how to replace the wheels and or motors on the iRobot Mint automatic hard floor cleaner.

Written By: Blake Klein



# INTRODUCTION

If your iRobot Mint is having trouble moving, this guide will show you how to take it apart and get it going again.



## TOOLS:

- [Precision Utility Knife](#) (1)
- [Phillips #2 Screwdriver](#) (1)
- [Nylon Tipped Tweezers](#) (1)
- [Heavy-Duty Spudger](#) (1)
- [Metal Spudger](#) (1)
- [ESD Safe Tweezers Blunt Nose](#) (1)
- [Phillips #1 Screwdriver](#) (1)
- [Flathead Screwdriver](#) (1)



## PARTS:

- [B01DRBX5ZU](#) (1)

## Step 1 — Remove Battery



- Remove the 4mm flathead screw on the battery cover.

## Step 2



- Pull out the battery and unplug the wires.
- ⓘ The nylon tip pliers can help you get a better grip on the battery plug.
- ⚠ Do not pull on the wires.



## Step 3 — Wheel Motor Covers



- Eight Phillips screws are located underneath the stickers.
- Carefully cut around the 8 screw holes using an X-acto knife or razor blade to reveal the screws.
- Remove the screws with a #2 Phillips screwdriver.

## Step 4



- Separate wheel motor lid and set aside.

## Step 5 — Cleaning Pad



- Remove cleaning pad.
- ⓘ The cleaning pad is magnetic and will pull right off with a little force.

## Step 6 — Separating Top Case



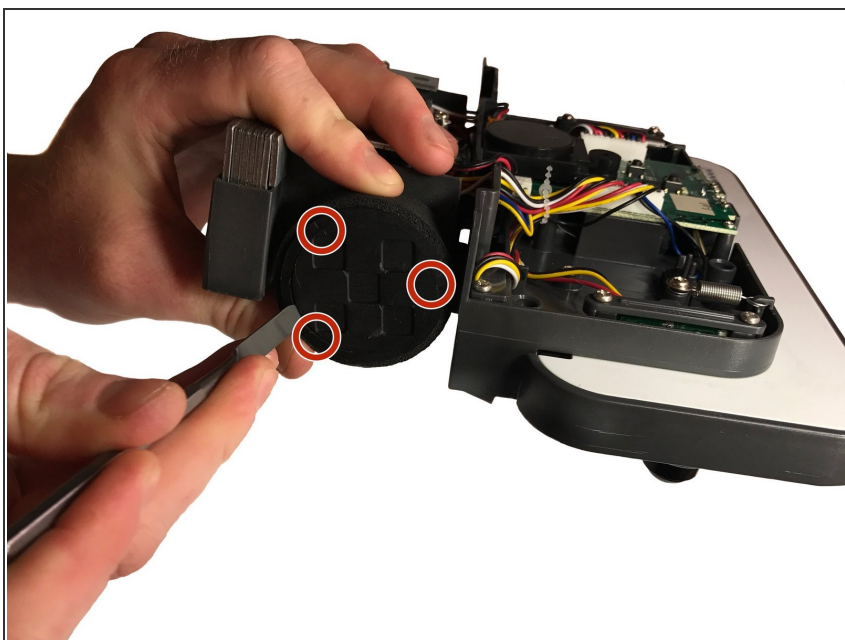
- Remove four #2 Phillips screws.

## Step 7 — Separate Case



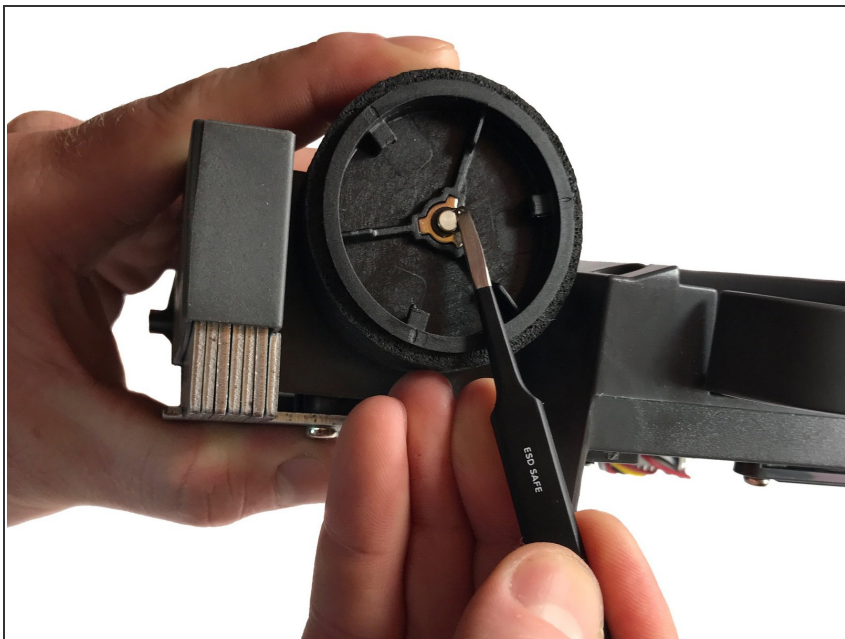
- With the device upside down, pull up to separate the bottom from the top cover.

## Step 8 — Wheel Removal



- Locate the three arrows on each wheel.
- Insert metal spudger at arrow locations to pop off the wheel covers.

## Step 9



- Use blunt nose pliers to remove circlip.
- Once clip is removed you can pull the wheel off in an outward motion.
- ⓘ Wedge one side of the pliers between the clip opening and carefully pry upwards.

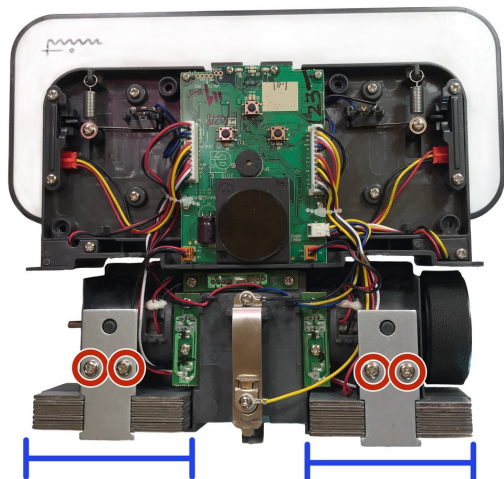
## Step 10 — Motor Mount



- Remove two #1 Phillips screws.
- Pull off sprocket.



## Step 11 — Remove Counterweights



- Remove four #2 Phillips and lift off retainer.
- Pull out all weights and set aside
- ⓘ Keep weights stacked together so they do not get mixed up.

## Step 12 — Unplug Motor



- Unplug the motor.
- ⚠ Do not pull on the plug as this can cause damage.



## Step 13



- Using the blunt nose pliers, peel up the adhesive and feed the wires with adhesive through the opening.

## Step 14 — Pull the Motor Out



- Flip the unit over and pull the motor out.

To reassemble your device, follow these instructions in reverse order.