



Dell XPS 13 Battery Replacement

If your Dell XPS 13 (also known as Dell XPS 13...

Written By: The Raptor



INTRODUCTION

If your Dell XPS 13 (also known as Dell XPS 13 Infinity Edge Ultrabook or Dell XPS 13 Skylake) has [lost its ability to hold a charge](#), you most likely have a dead battery, which requires replacement.

A functional battery provides power to your laptop. Eventually, laptop batteries will rapidly drain after going through a repeated amount of charge cycles. If you notice that your charged battery is draining more quickly than usual, consider calibrating your battery to determine an accurate charging capacity. If you continue to notice significant drops in battery percentage, you should replace your battery.

A punctured battery can cause a dangerous fire. If your battery is swollen, [take appropriate precautions](#).

Make sure to power down your device before you begin.



TOOLS:

- [T5 Torx Screwdriver](#) (1)
- [iFixit Opening Picks \(Set of 6\)](#) (1)
- [Spudger](#) (1)
- [Phillips #0 Screwdriver](#) (1)



PARTS:

- [Dell XPS13 9343/9350 Replacement Laptop Battery](#) (1)

Step 1 — Back Cover



- Remove the eight 4 mm T5 Torx screws from the bottom cover.

Step 2



- Use a plastic opening tool to pry open the 'XPS' flap in the middle.

Step 3



- Remove the single Phillips screw hidden beneath the flap.

Step 4



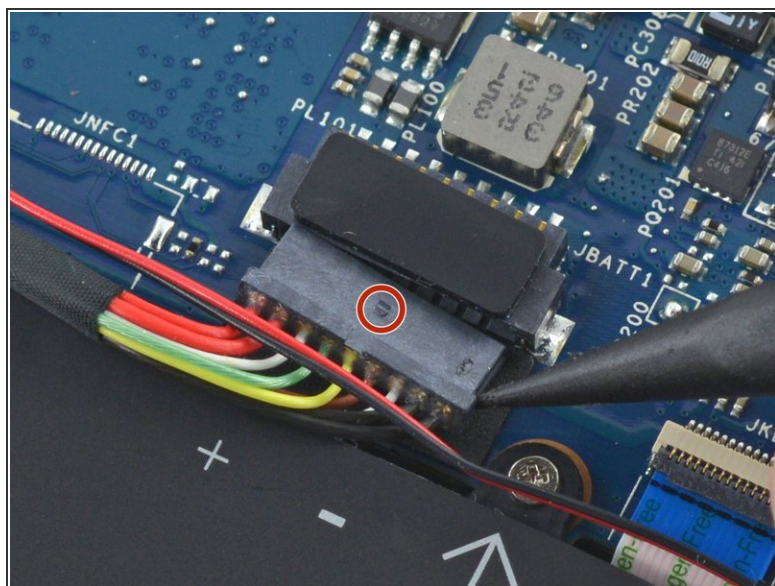
- Use opening picks or a plastic pry tool to pry open the case clips, beginning from the back edge.

Step 5



- Remove the bottom cover.

Step 6 — Battery Disconnection



- Pull the battery cable connector towards the battery to disconnect it from its socket.
 - If the connector is stubborn, push a little at one side, then the other, to "walk" it out of its socket.
 - If you have trouble walking the connector out of the socket, use the point of a spudger to gently push on the connector indent to slide the connector out.

⚠ Do not pull up.

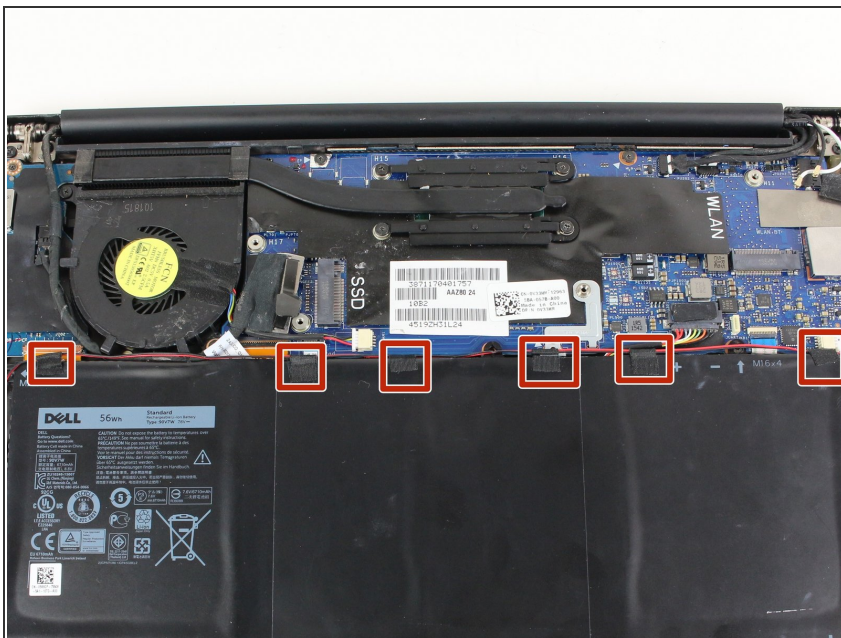
- Open the display and press the power button for five seconds to drain any remaining charge from the system.

Step 7 — Battery



- Remove three Phillips screws labeled "M2x2"
- Remove a Phillips screw labeled "M1.6x4"

Step 8



- Peel up any tape securing the speaker cables to the battery.
- ⓘ You don't need to remove the speakers, only the tape, allowing the battery to be removed out under the speaker cables.

Step 9



- Remove the battery.

Plug in replacement battery, then plug in the power adaptor, too. If notebook neither charges nor does boot, unplug battery and charger, then remove and re-install coin-cell battery (CMOS, RTC; see [Dell's guide](#)).

To reassemble your device, follow these instructions in reverse order.