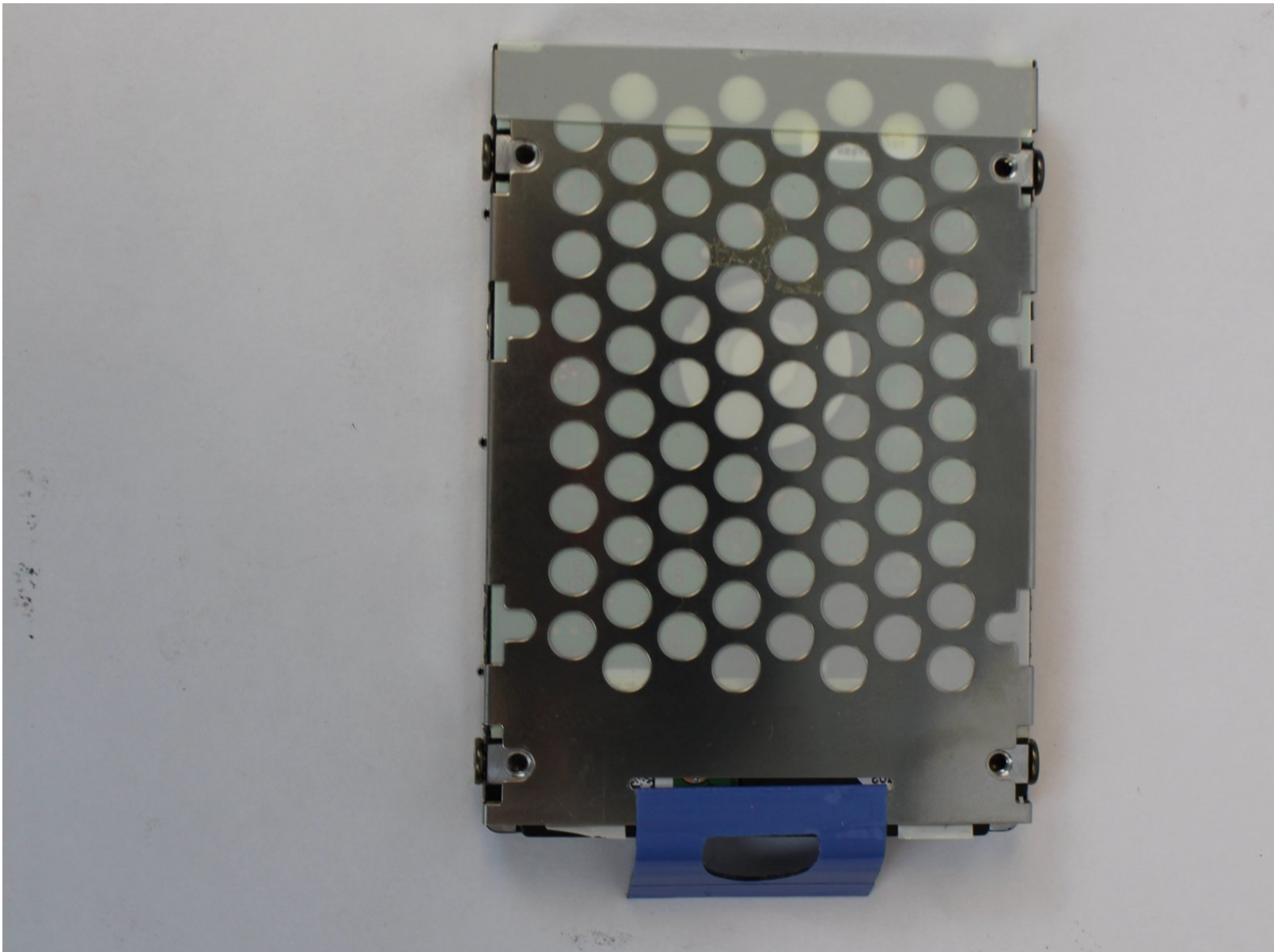




IBM ThinkPad 600E Hard Drive Disk Replacement

This guide will show you how to replace your...

Written By: Kevin Nguyen



INTRODUCTION

This guide will show you how to replace your hard drive disk. Several reasons why you would want to replace your hard drive is because you want to increase your memory or it is faulty or broken.



TOOLS:

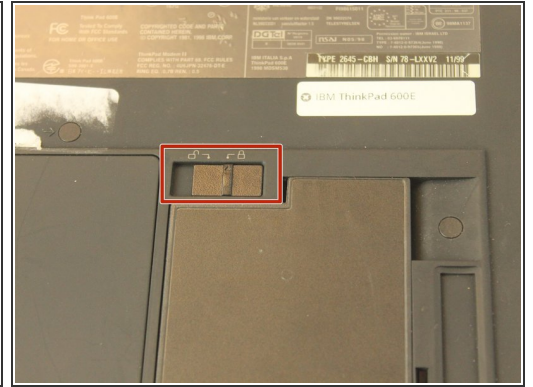
- [Heavy-Duty Spudger](#) (1)
 - [iFixit Opening Tool](#) (1)
 - [Coin](#) (1)
- Nickel
- [Anti-Static Wrist Strap](#) (1)
 - [Phillips #0 Screwdriver](#) (1)



PARTS:

- [1 TB SSD](#) (1)
- [250 GB SSD](#) (1)
- [Crucial MX500 500 GB SSD](#) (1)
- [2 TB SSD](#) (1)

Step 1 — Battery



- Flip the laptop over and find the battery latch.

Step 2



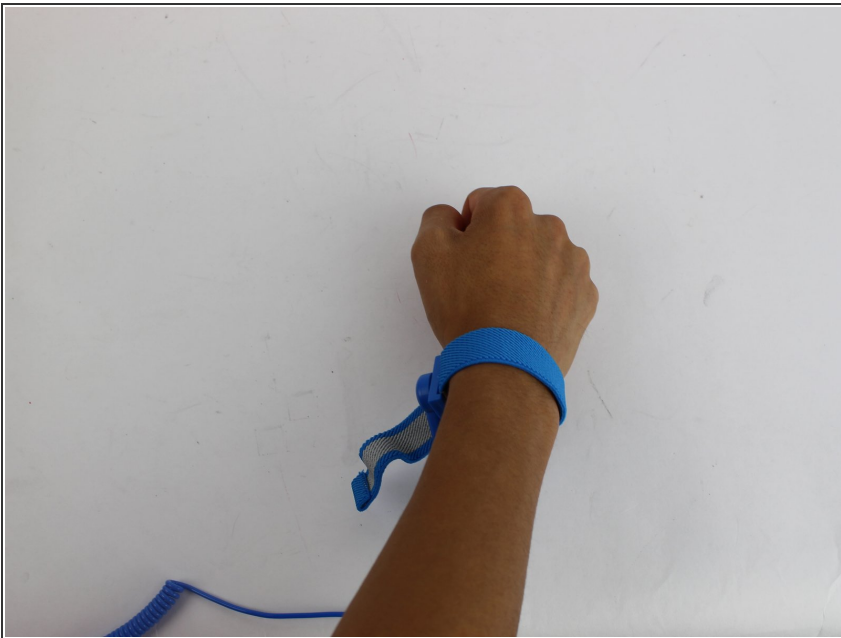
- Move the latch to the side with the unlocked symbol.

Step 3



- Pry the battery out using your fingers.

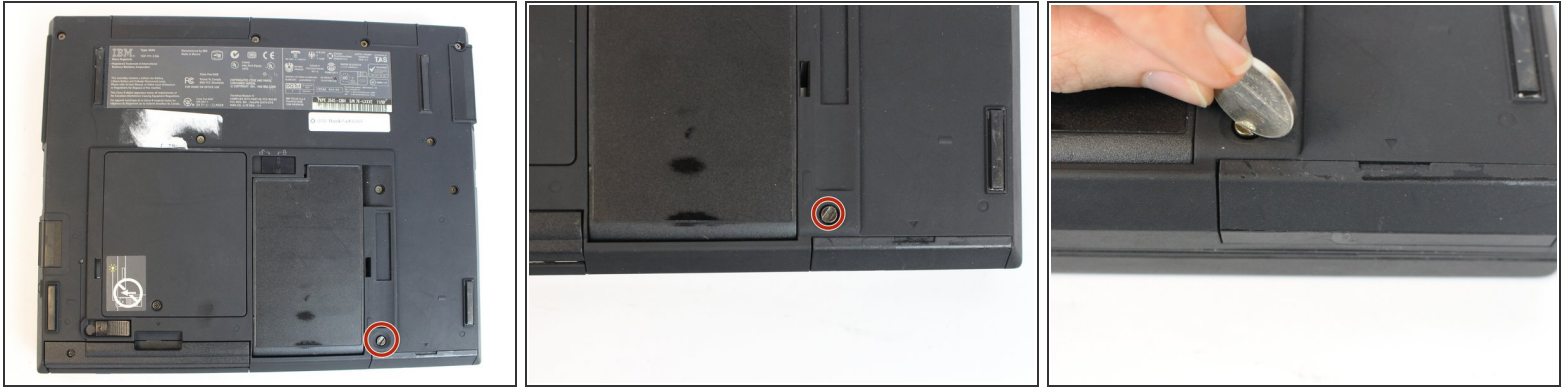
Step 4 — Hard Drive Disk



⚠ Put on the anti-static wrist trap and clip it to a large metal object.

i If you do not have an anti-static wristband, make sure to touch a large metal object to ground yourself before beginning to work on your replacement. Occasionally touch the metal object.

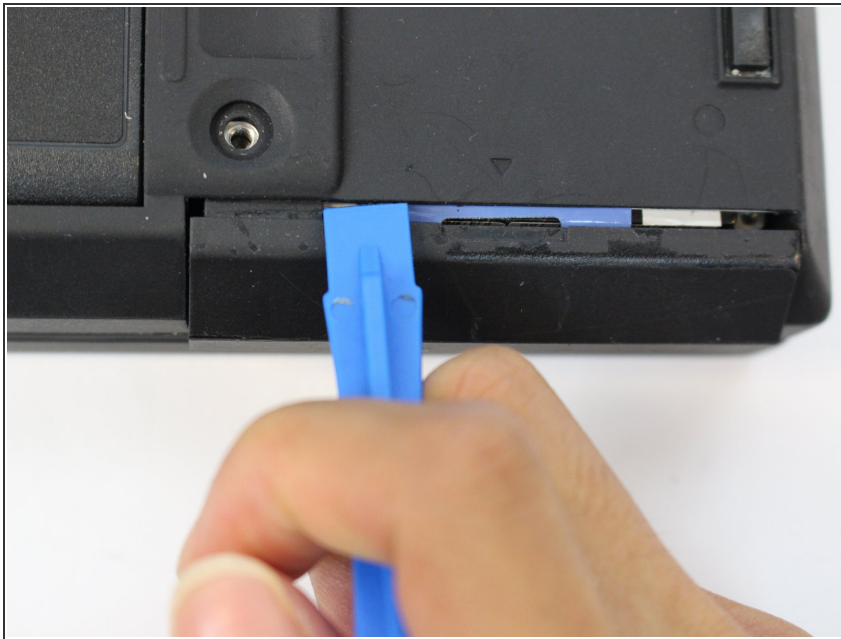
Step 5



- Using a coin, remove the coin screw by turning counterclockwise.

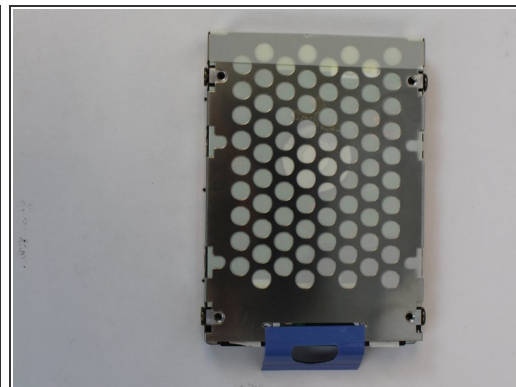
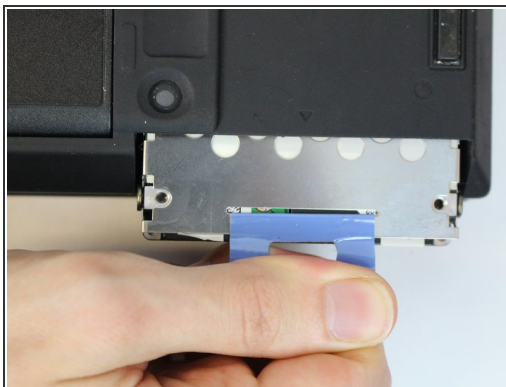
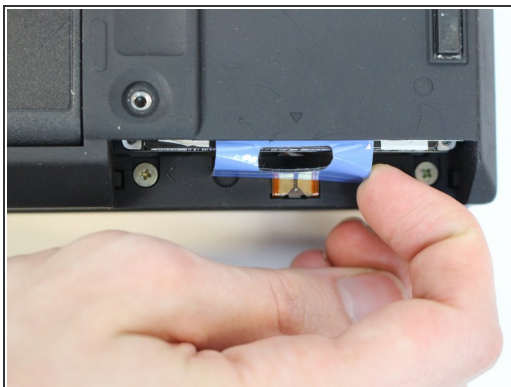
i It's best to use a thicker coin, such as a nickel.

Step 6



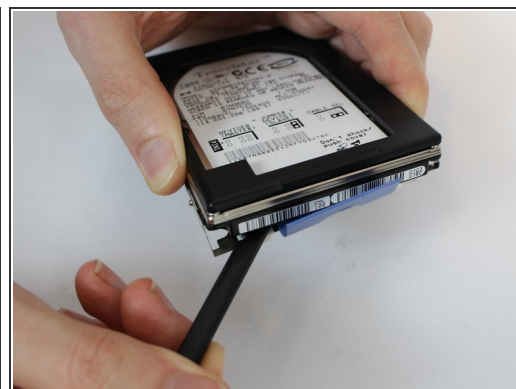
- Using a plastic spudger, pry off the plastic cover by pulling it out.

Step 7



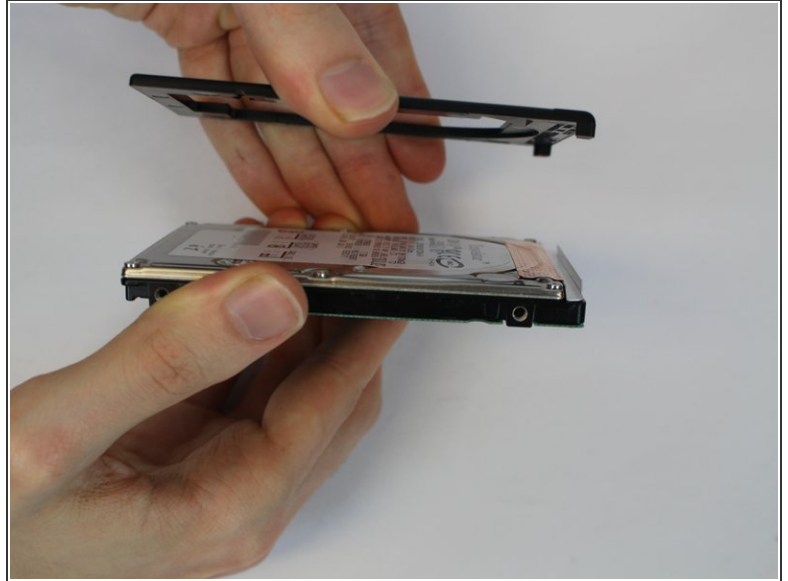
- Utilizing your fingers, untuck the tab and pull to remove the hard drive.

Step 8



- Using a screwdriver, remove the screws by turning them counterclockwise to remove the bracket.
- four 3mm PH0 screws
- ⓘ The metal bracket is still attached with a weak adhesive tape, gently pry it off with a spudger.

Step 9



- The top plastic piece is adhered with a weak adhesive. Gently pry it off with a spudger.

To reassemble your device, follow these instructions in reverse order.