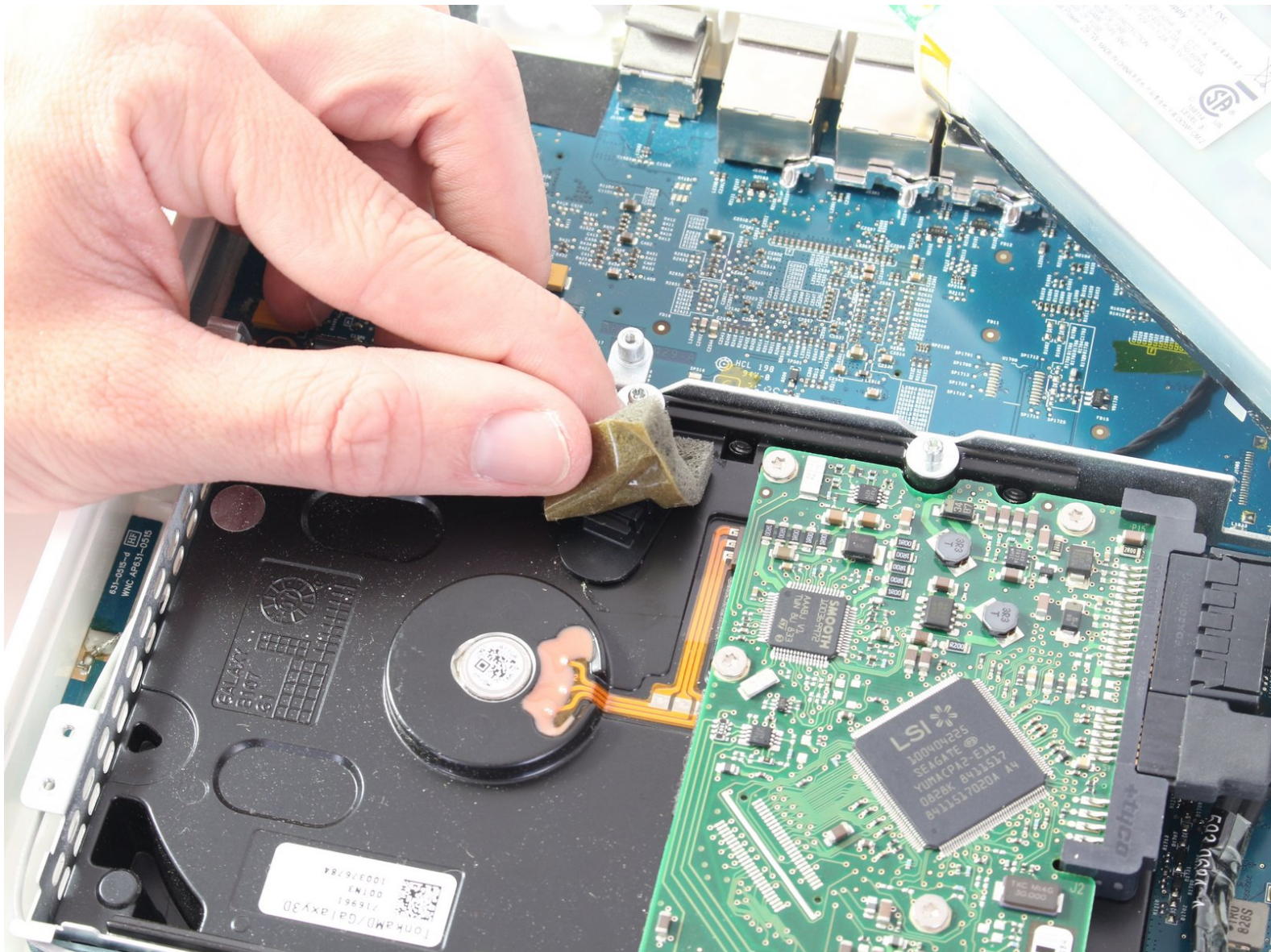




# Apple Time Capsule Model A1254 Hard Drive Replacement

The hard drive is critical to the life of the...

Written By: Patrick Butler



---

## INTRODUCTION

The hard drive is critical to the life of the device. The hard drive is a key piece of the time capsule, so awareness and moving slow through the steps is beneficial to ensuring no problems when the repair is made. This guide is do-able by anyone, but will not consume much time. If the user wants to add more storage then a replacement of the hard drive is a popular choice.



### TOOLS:

- [Metal Spudger](#) (1)
  - [Phillips #00 Screwdriver](#) (1)
-

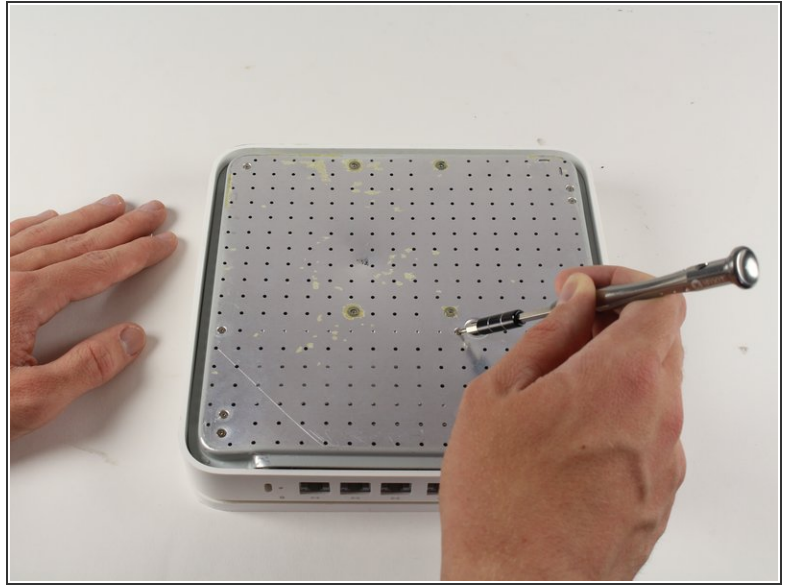
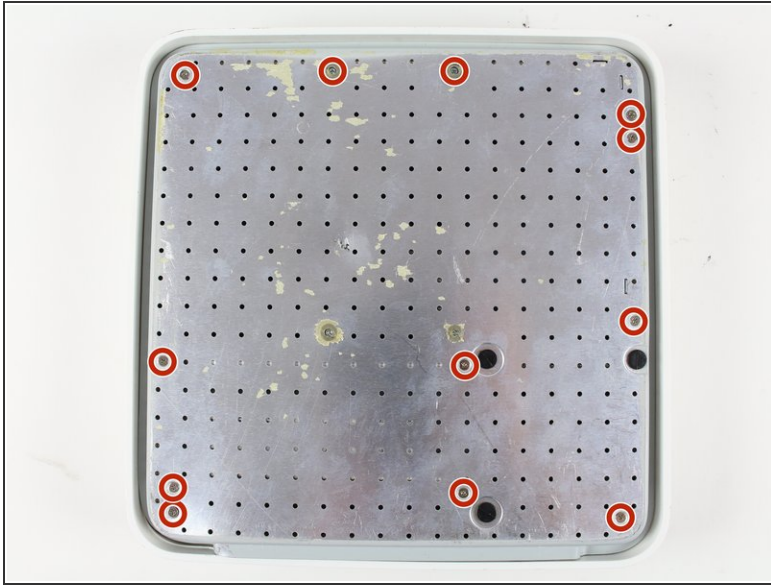
## Step 1 — Back Plate



- Turn the device upside down to reveal the rubber section of the back plate. Using a metal spudger, carefully wedge the blunt tip into the space between the aluminum back plate and the rubber, separating the two pieces.
- ⓘ This may take a few minutes to pry the rubber off completely. Once you are able to get a grip on the rubber it is easier to peel it off using your hands.
- Depending on air temperature and how set the adhesive is, you may need to spend some time warming the back plate with a hot plate (on low) or hair dryer.
- ⓘ Don't worry about re-applying adhesive to the rubber; the remaining adhesive has plenty of strength to affix itself to the aluminum.



## Step 2



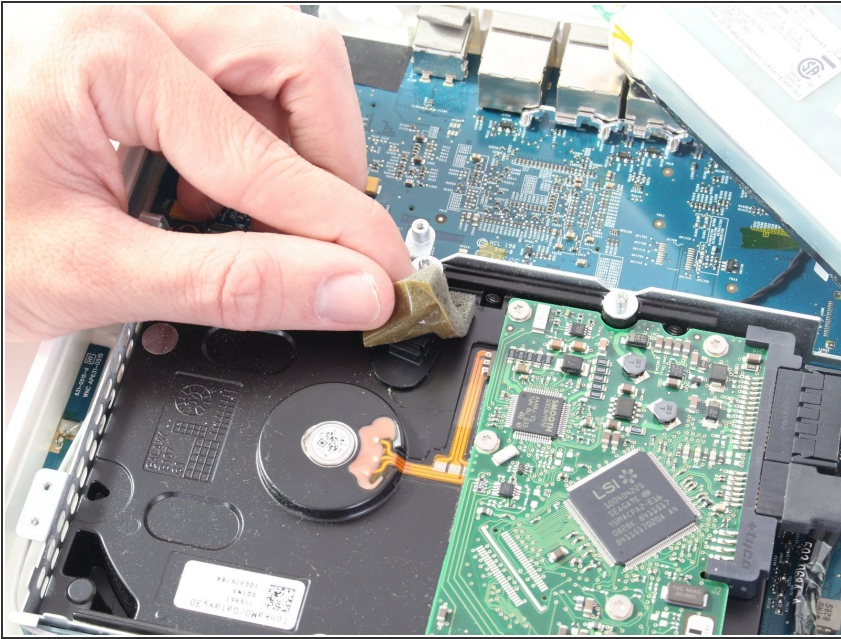
- Remove the ten 3mm screws with a Phillips #00 screwdriver.
- ⓘ The screws with adhesive covering **do not** need to be removed.

## Step 3



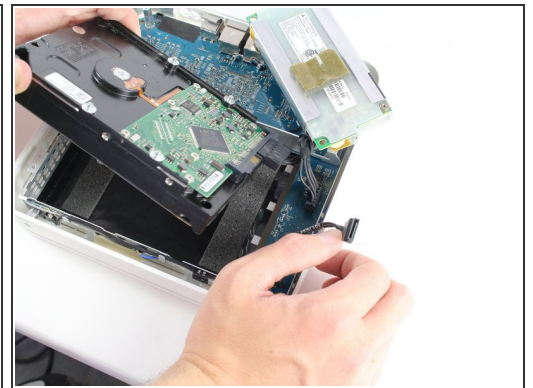
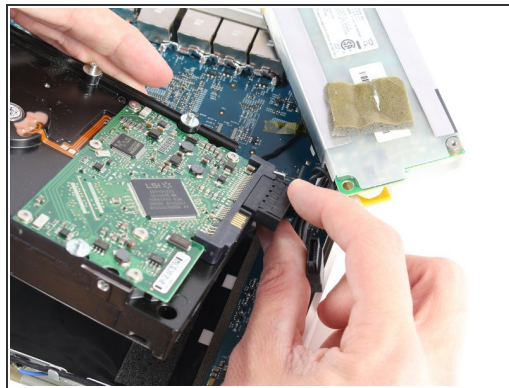
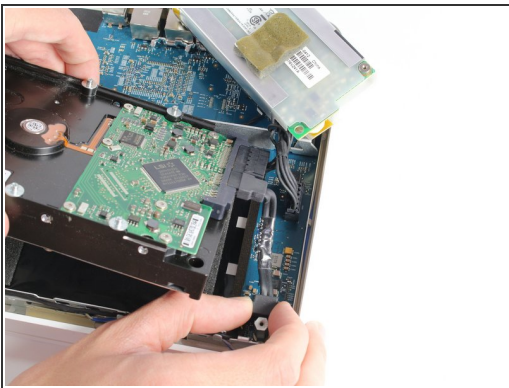
- The fan affixed to the back plate is connected to the logic board. A small wire must be detached to fully remove the back plate.
- Pull the base of the wire close to the logic board and the connector will pop off.

## Step 4 — Hard Drive



- Peel off the adhesive backed foam from the top of the drive.
- Lift the drive straight up and out of the device.

## Step 5



- Remove the SATA connector and power connector from the end of the hard drive by simply pulling the cables straight away from the connection points.

To reassemble your device, follow these instructions in reverse order.