



LG G5 Auxiliary Port Replacement

This guide will give instructions about how to replace the auxiliary port, where you would plug in headphones and speakers, on the LG G5

Written By: Joshua Zalmanowitz

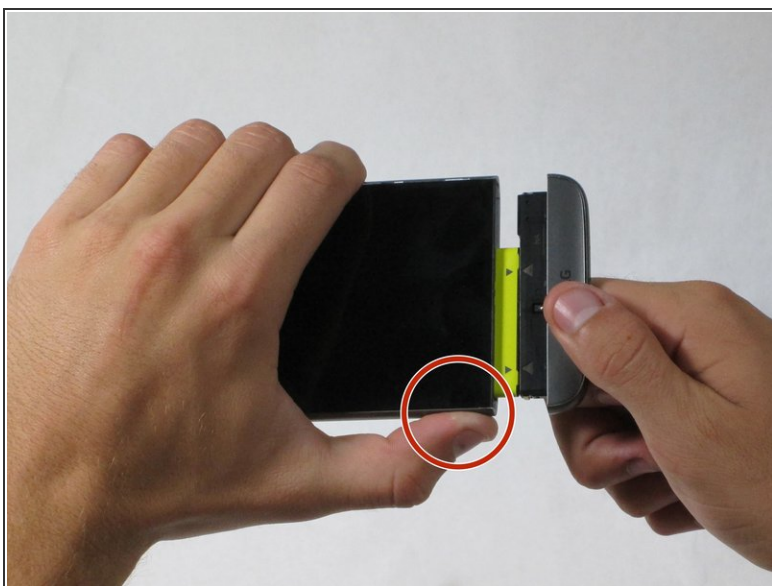




TOOLS:

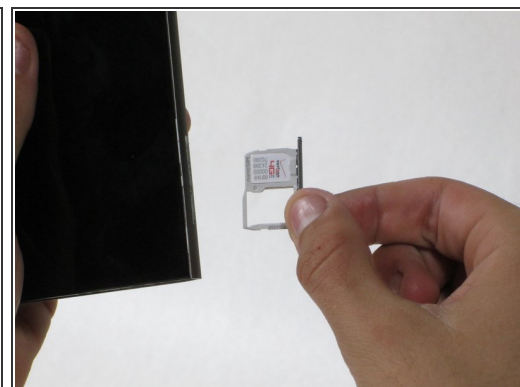
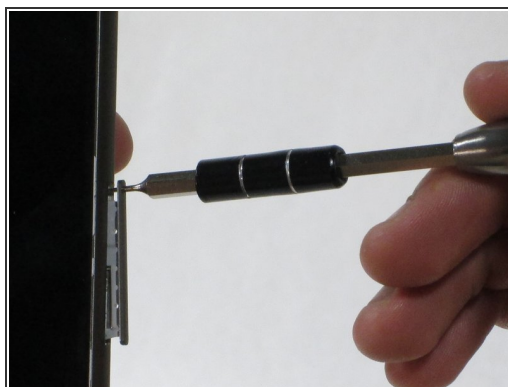
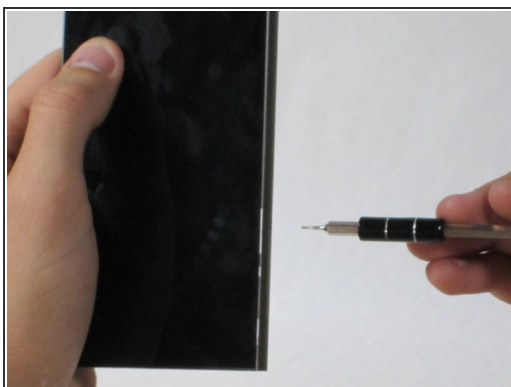
- [Spudger](#) (1)
 - [Phillips #00 Screwdriver](#) (1)
 - [iFixit Opening Tools](#) (1)
 - [SIM Card Eject Tool](#) (1)
-

Step 1 — Front Panel Assembly



- While holding the battery release button, pull the bottom end of the phone out of the body.

Step 2



- Insert the sim card eject tool (0.8mm sim card eject head) into the small hole on the sim card tray.
- Press inward with some force to eject the tray.
- Pull the sim card tray out of the phone.

Step 3



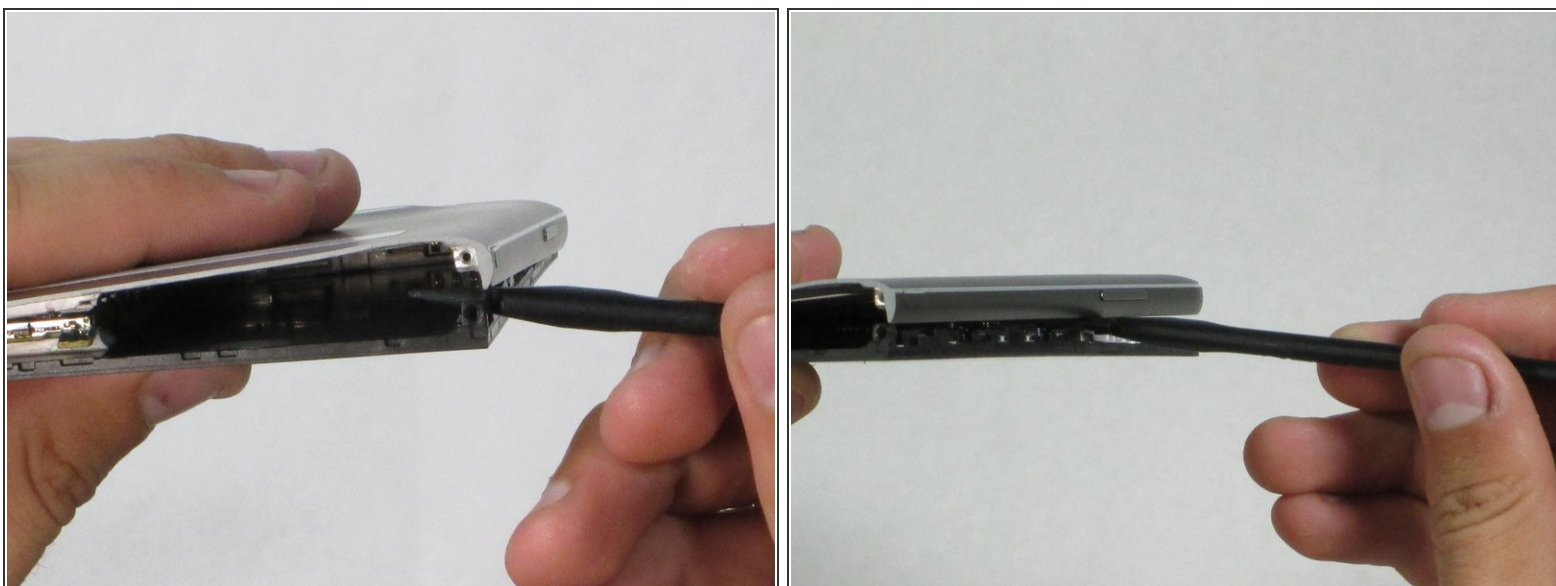
- Remove the two 5.5mm Phillips #00 screws from the base of the phone.

Step 4



- Insert the plastic opening tool into the seam between the glass screen and the metal body.
- Pry the glass from the body only a slight amount.

Step 5



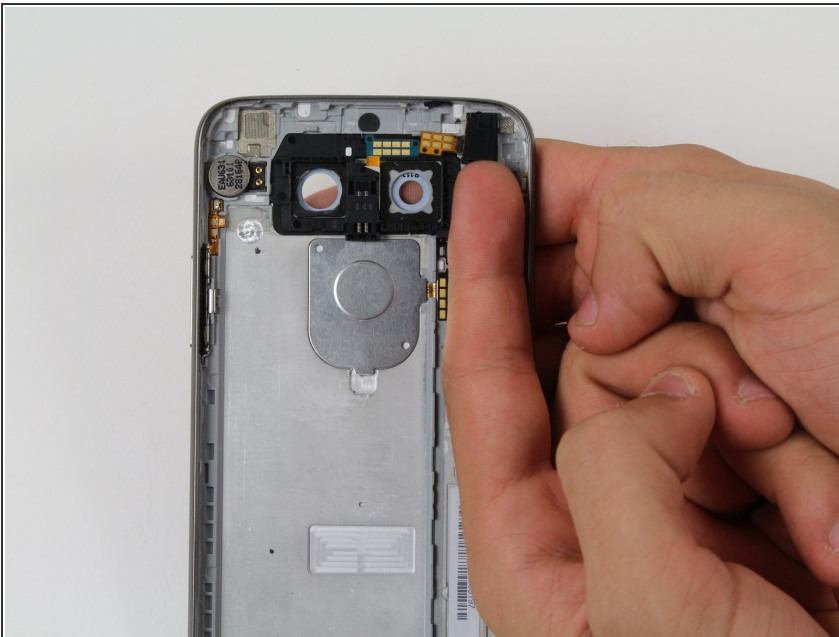
- Insert the Spudger into the now open space between the body and screen.
 - Push inward to separate the screen even more.
 - Slowly slide the nylon spudger up the edge the phone till the screen pops out of the body.
- ☒ When putting the screen back in, press the edges down from the top of the phone to the bottom. The screen should "pop" into place.

Step 6



- Peel the screen away from the body. The two parts should be completely separated.

Step 7 — Auxiliary Port



- Locate the auxiliary port on the top right of the phone
- Using a finger, carefully take the port out
- ★ Replace the old auxiliary port with a new one by orienting the hole towards the top of the phone and the gold ribbon to the left (as shown in the picture).

To reassemble your device, follow these instructions in reverse order.