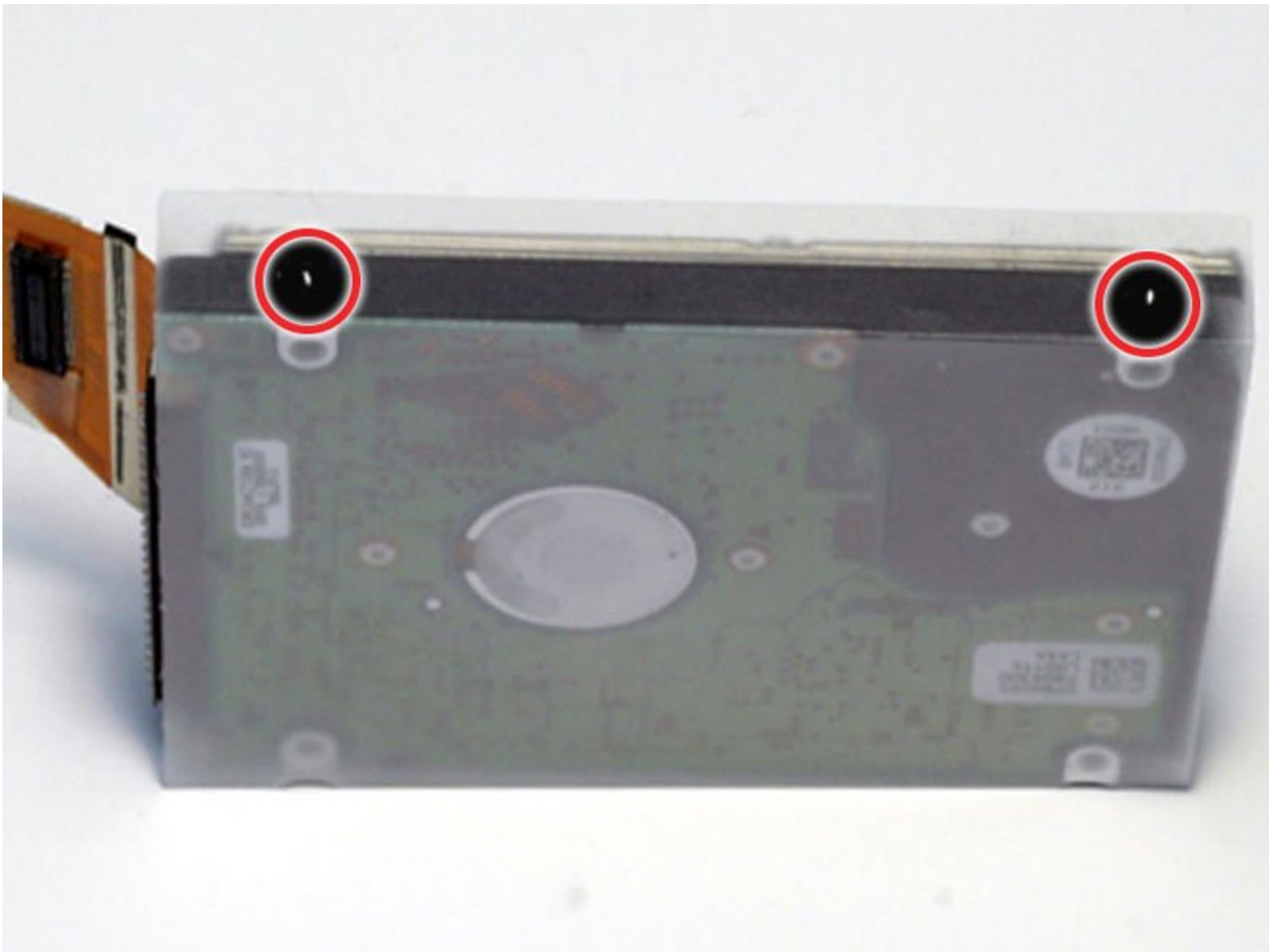




# PowerBook G4 Titanium Mercury Hard Drive Replacement

Written By: iRobot



## INTRODUCTION

You can install hard drives up to 12.5mm thick.



### TOOLS:

- [Phillips #00 Screwdriver](#) (1)
- [T8 Torx Screwdriver](#) (1)



### PARTS:

- [120 GB 5400 RPM Western Digital ATA Hard Drive \(New\)](#) (1)
- [G4 Titanium Mercury Hard Drive Bracket](#) (1)

## Step 1 — Lower Case



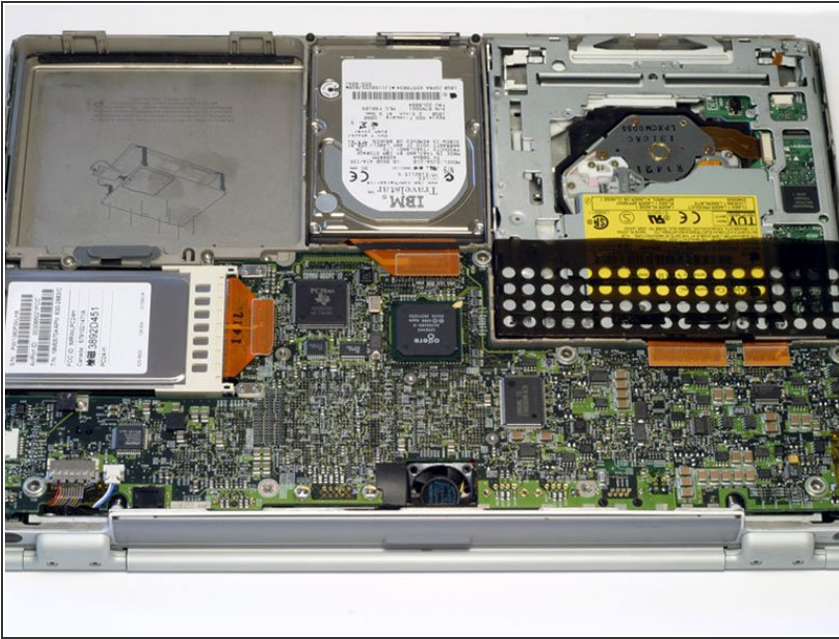
- Turn the G4 over.
- Remove the eight Phillips screws from the lower case.

## Step 2



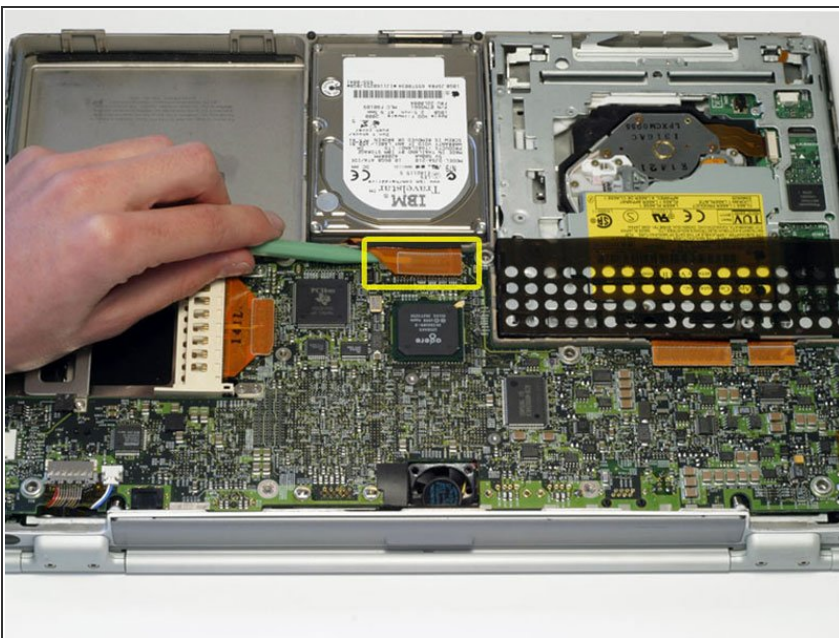
- Using your thumbs, slide the lower case away from you.
- ⓘ The lower case may stick in the front on a tab just above the center of the DVD drive. Be careful as you work the case off, or you may break the thin strip of plastic just above the drive.
- Lift the lower case off.

## Step 3



- Your laptop should look approximately like this.

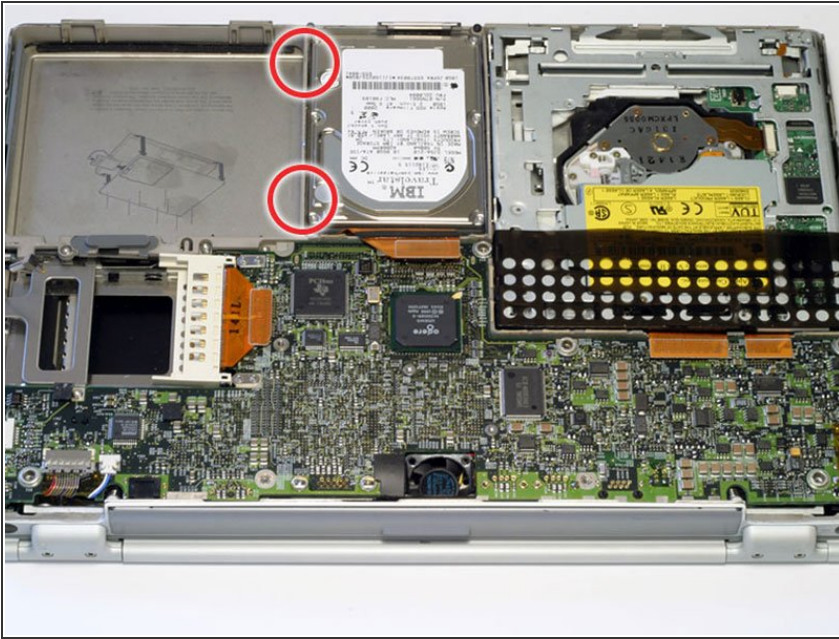
## Step 4 — Hard Drive



- Disconnect the hard drive ribbon from the logic board using a spudger or the tip of your finger.

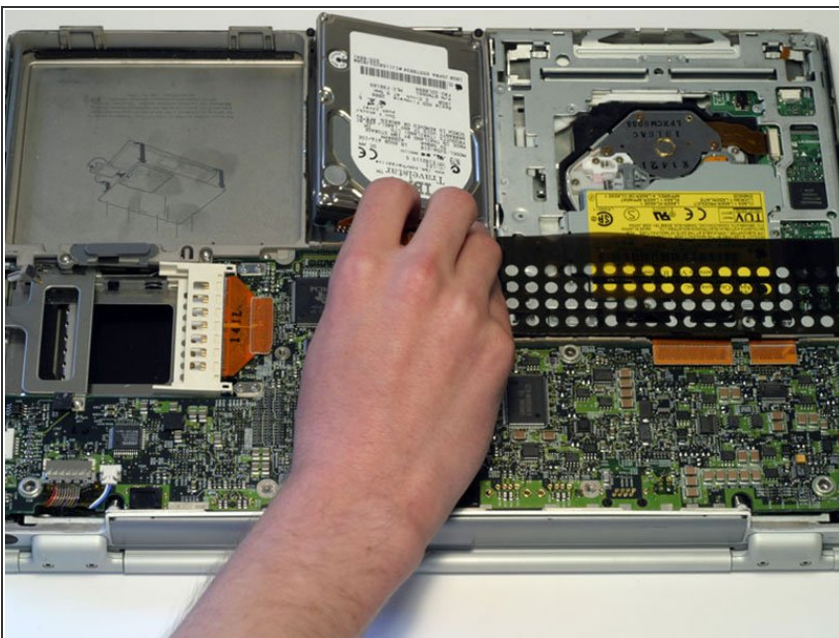


## Step 5



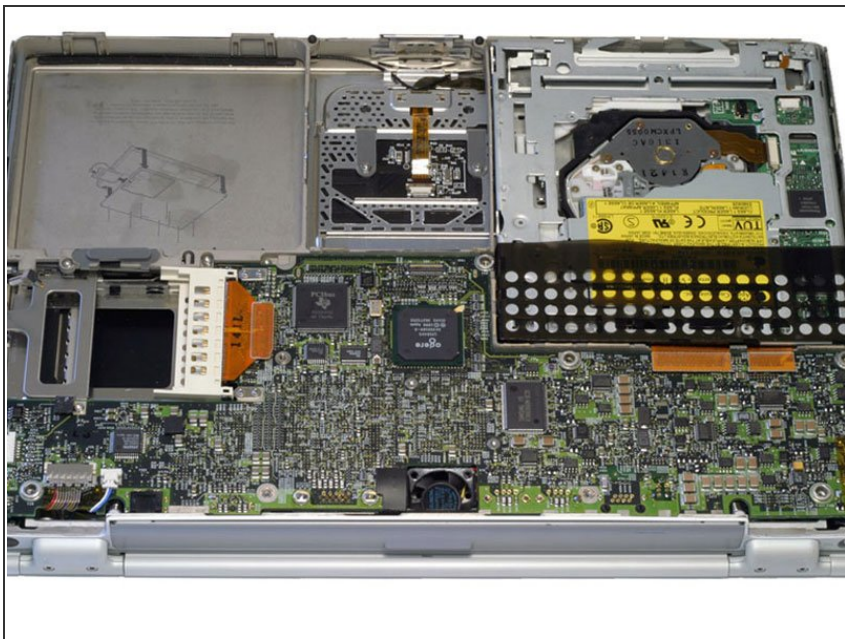
- To free the hard drive, remove the two T8 Torx screws from the right wall of the battery housing.

## Step 6



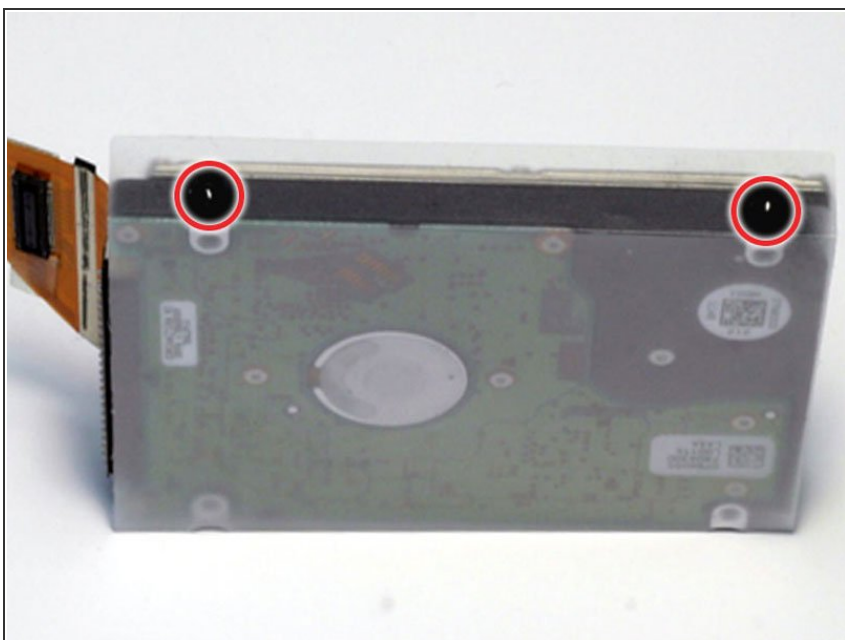
- Remove the hard drive by gently grasping the orange ribbon cable and lifting the left edge up and out of the computer.
- ⓘ There are four rubber bumpers that fit over the hard drive screws. Ensure that these bumpers come out when you remove the hard drive.

## Step 7



- Your laptop should look approximately like this.

## Step 8 — Hard Drive





- Remove the two black plastic bumpers and two T8 Torx screws from the side of the hard drive.

## Step 9



- Grasp the orange ribbon cable and disconnect it from the hard drive. If the connector is tight, gently rock it from side to side.

 Be sure to pull evenly on both sides as uneven force may damage the hard drive pins and render your data inaccessible.

 If you are installing a new hard drive, we have an [OS X install guide](#) to get you up and running.

To reassemble your device, follow these instructions in reverse order.