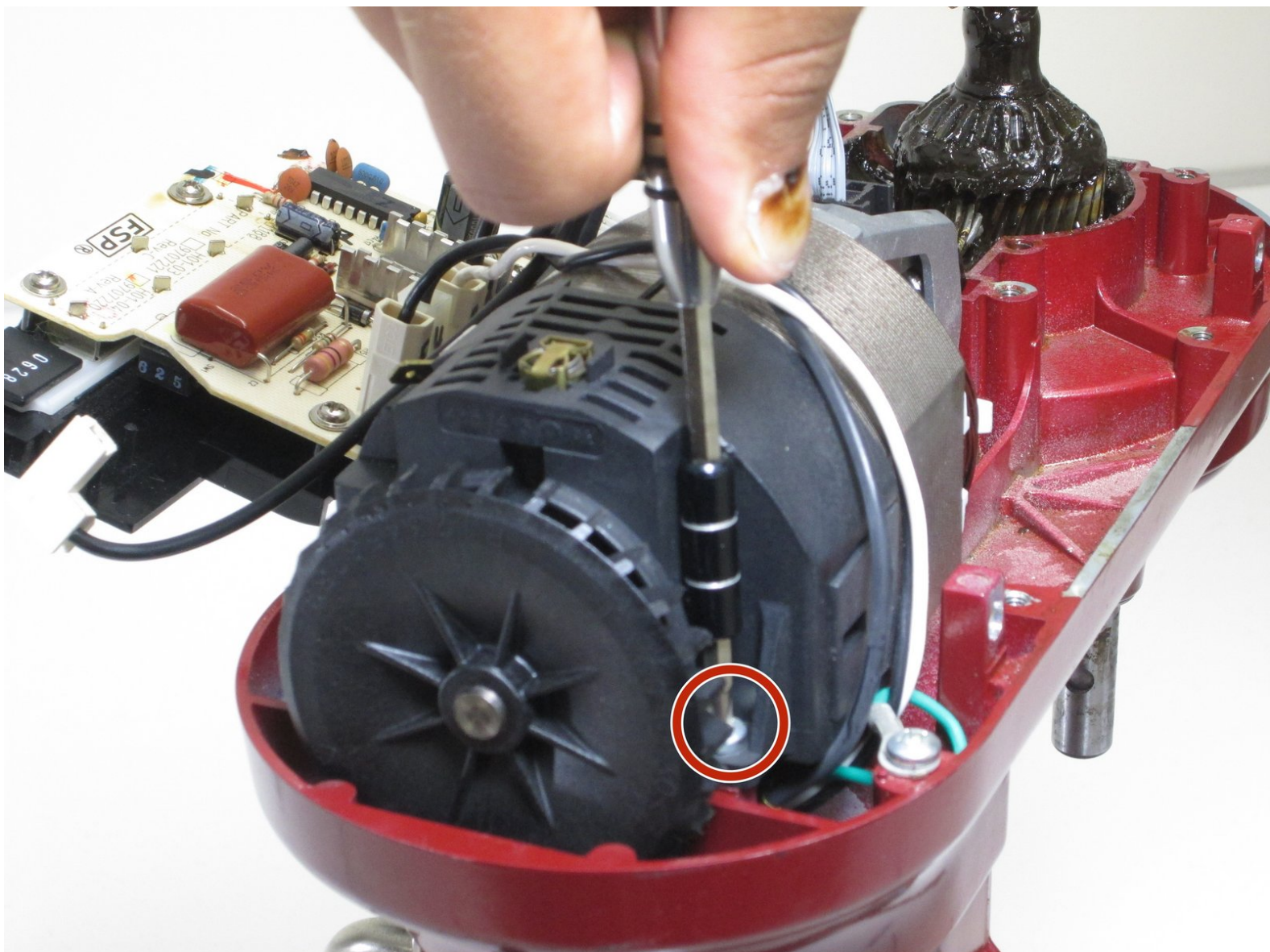




# KitchenAid Professional 600 Drive Motor Replacement

If the kitchen will not run and has seized or simply ceased to work and the problem is not solved by replacing the selector switch, the drive motor may need to be replaced.

Written By: Tallon Dotinga



---

## INTRODUCTION

Outline what you are going to teach someone how to do.

---

### TOOLS:

- [Phillips #2 Screwdriver](#) (1)
-

## Step 1 — Top Cover



- Take out the screw which holds on the silver band using a Phillips #2 screwdriver.
- Remove the silver band.

## Step 2



- Remove the four Phillips #2 screws located around the mixer where the band was removed.
- ⓘ This picture only shows two of the screw that you need to remove. The other two are on the exact opposite side of the mixer.

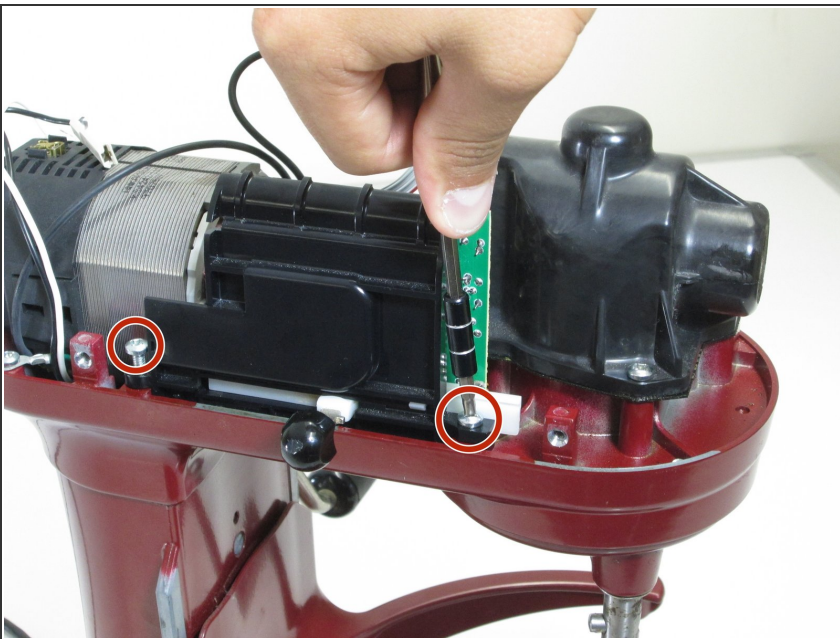


### Step 3



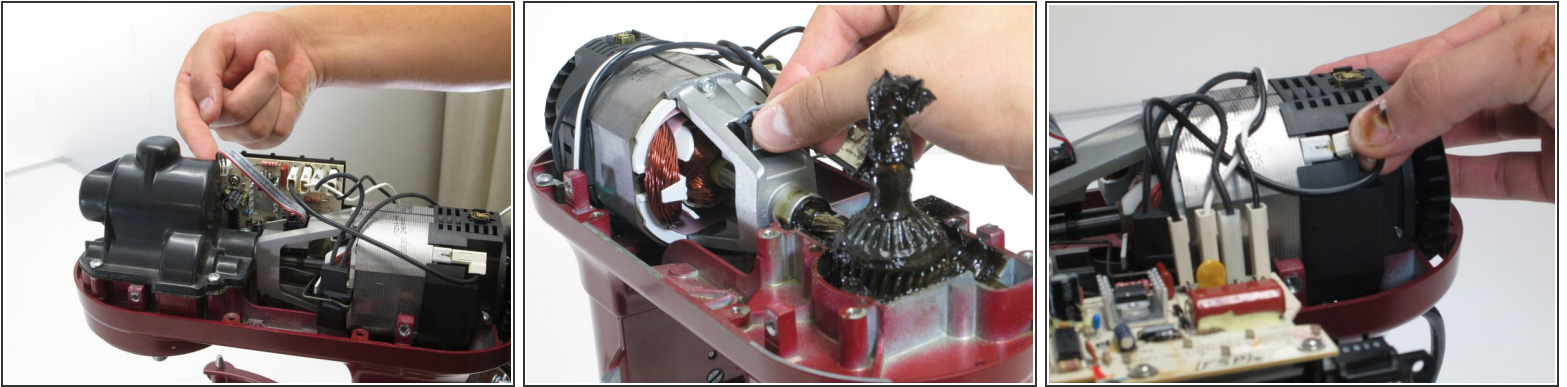
- Remove the top of the mixer to reveal the inner parts.
- ⓘ The top should lift off, but may not if it is stuck. A sharp strike from the back with the hand may unstick it. It will slide forward about a 3/8 of an inch. Push it back again from the front and it should be free enough to lift.

### Step 4 — Speed Selector



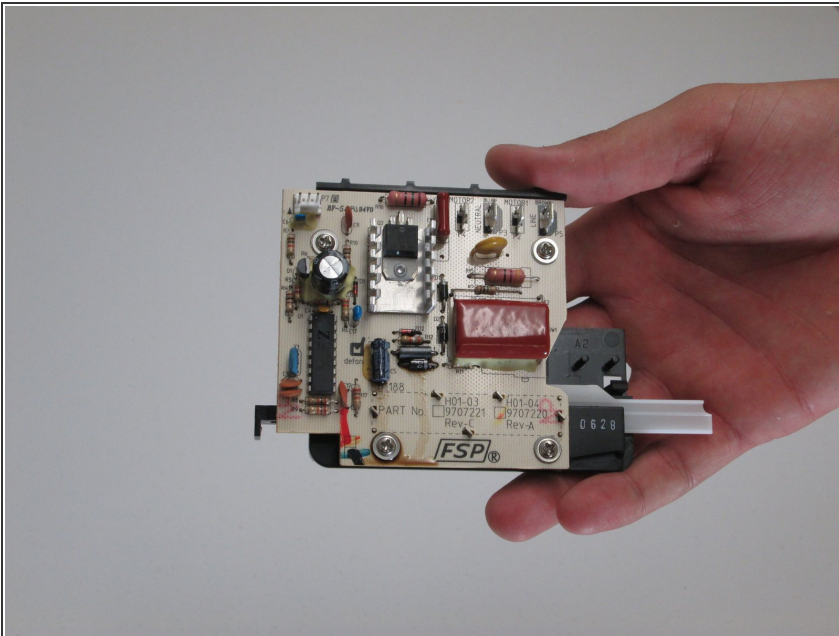
- Locate the selector switch.
- Remove the two Phillips #2 screws holding the selector switch in place.

## Step 5



- Unplug the cords attached the drive motor to the switch.
- ⓘ We suggest numbering them left from right so they are reattached to the replacement part in the right order.

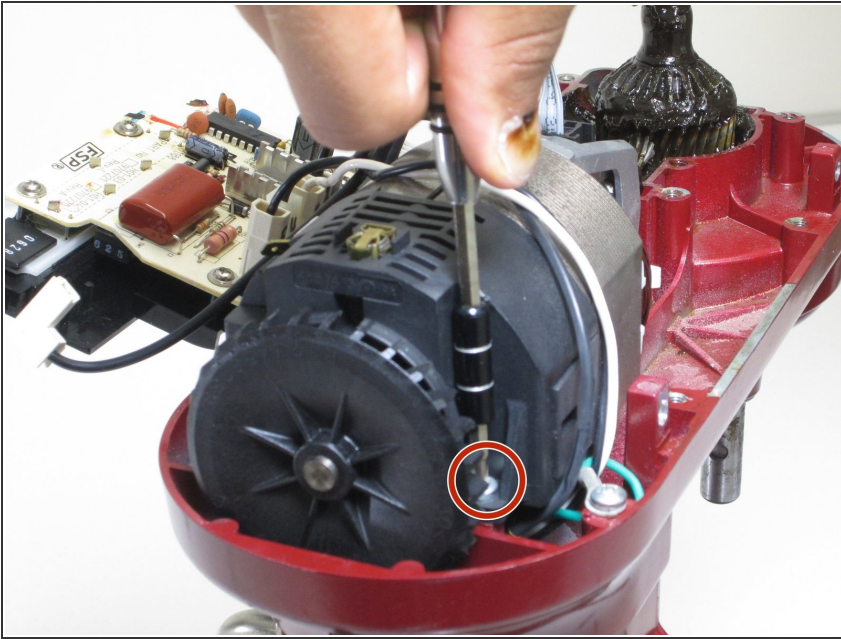
## Step 6



- Pull out the Selector Switch.

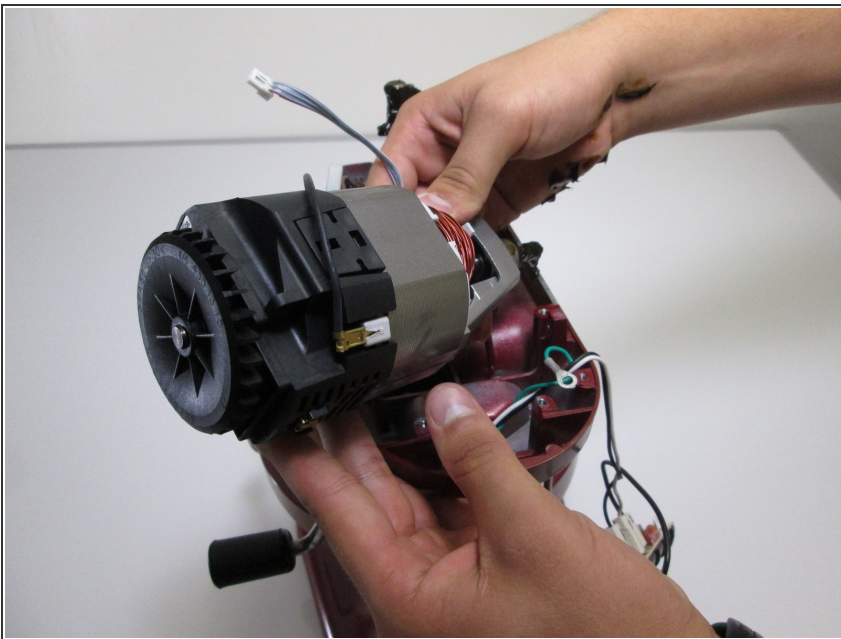


## Step 7 — Drive Motor



- Remove the two Phillips #2 screws holding the motor in place, located near the fan at the back of the motor.
- ⓘ The picture only shows one of the screws. The other screw is located on the exact opposite side of the motor.

## Step 8



- Pull upward to remove the motor.

To reassemble your device, follow these instructions in reverse order.