



Acer Aspire One D255E Back Panel Replacement

This guide will show you how to remove the back panel of the Acer Aspire One D255E.

Written By: Brian



INTRODUCTION

Though the back panel is not itself a component that is often replaced you will need to remove it in order to get to various components inside the computer. You should read through the entire guide before performing the repair and should have all necessary tools readily available. You should also find a safe location to store the various screws taken out of the computer to ensure that they do not get mixed up or lost.



TOOLS:

- [Phillips #0 Screwdriver](#) (1)
 - [Spudger](#) (1)
-

Step 1 — Back Panel



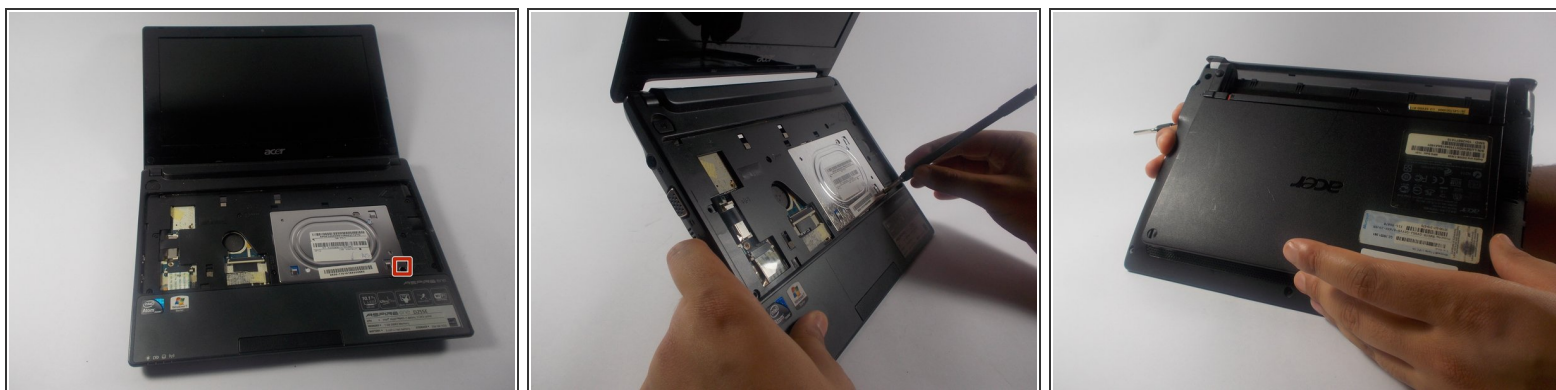
- Unscrew seven 1.2 mm Phillips #1 screws from the back of the device

Step 2



- Unscrew eight more 1.2 mm Phillips #1 screws from the front of the computer.

Step 3



- Using a spudger carefully push through the hole to dislodge the panel on the back of the device then remove the panel by hand.
- ⓘ It is recommended that you use a plastic spudger to reduce the chance of damaging any internal parts.

To reassemble your device, follow these instructions in reverse order.