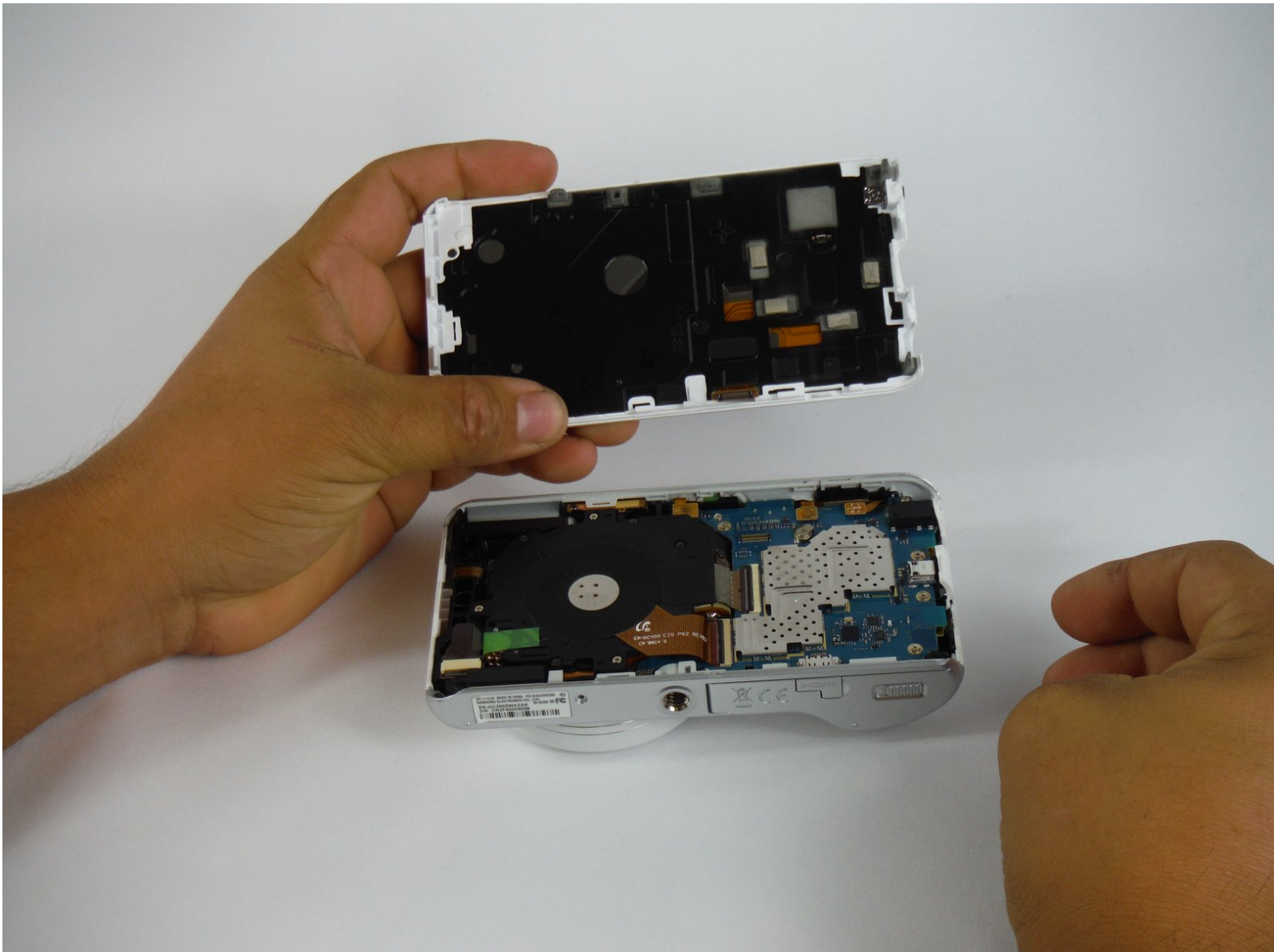




# Samsung Galaxy Camera 2 Screen Replacement

Smashed your screen? We've got you covered.

Written By: Alexander De La Cruz



---

## INTRODUCTION

In this replacement guide, you will be tasked with removing the screen. If your screen is cracked, make sure to handle the part with care, as some pieces of glass could fall off. To prevent this, put clear packing tape over the screen to keep it intact. Always remember to remove the battery before you take the camera apart.



### TOOLS:

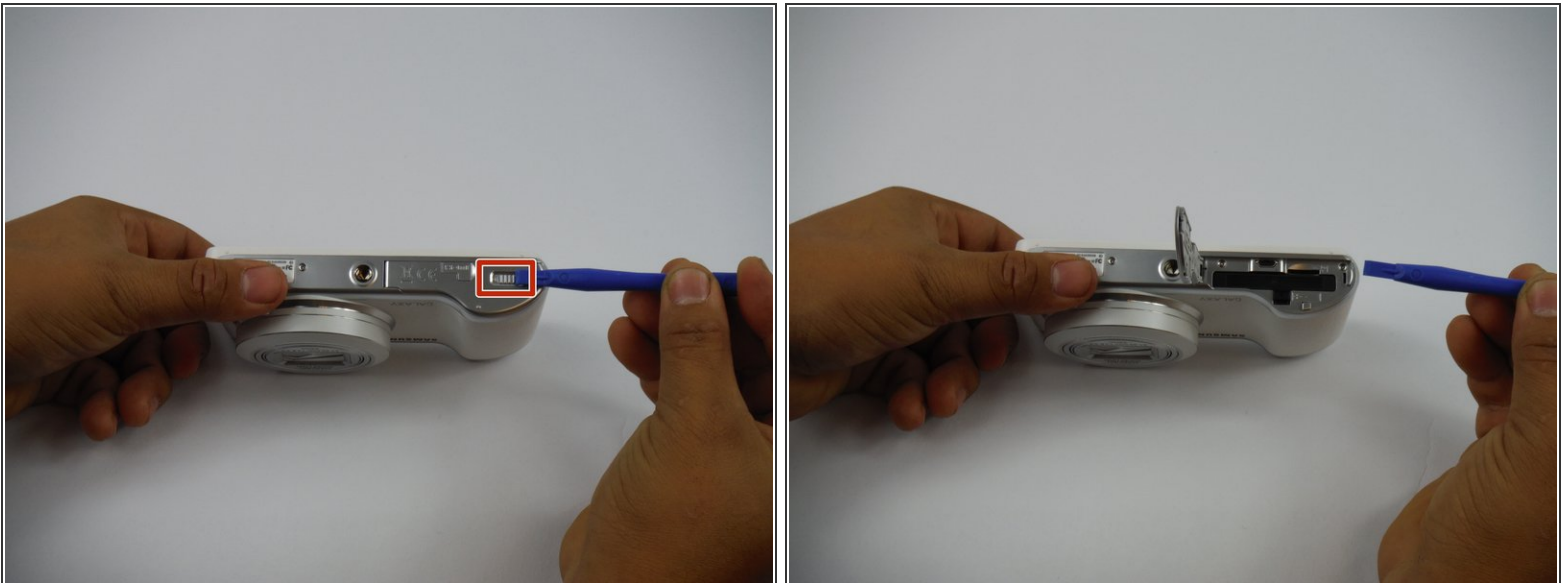
- [iFixit Opening Tool](#) (1)
  - [Phillips #00 Screwdriver](#) (1)
-

## Step 1 — Battery



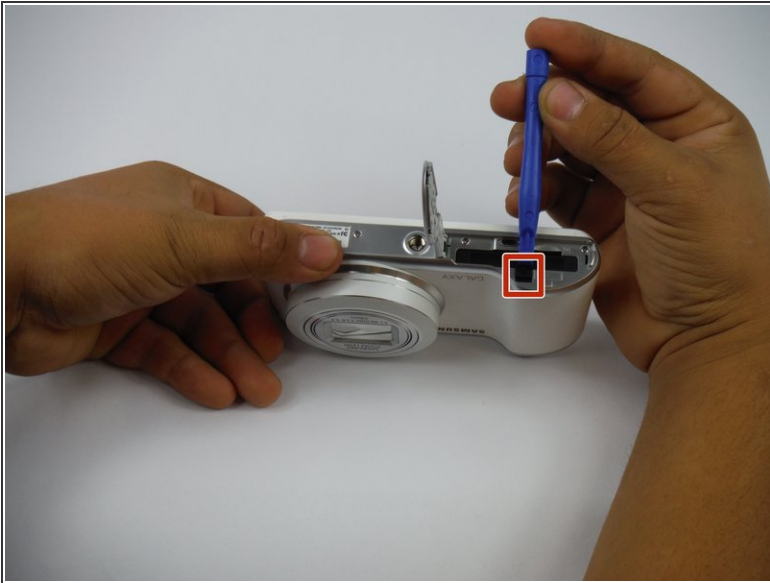
- Face the camera towards you, then rotate it such that the battery door is facing up and to the right.

## Step 2



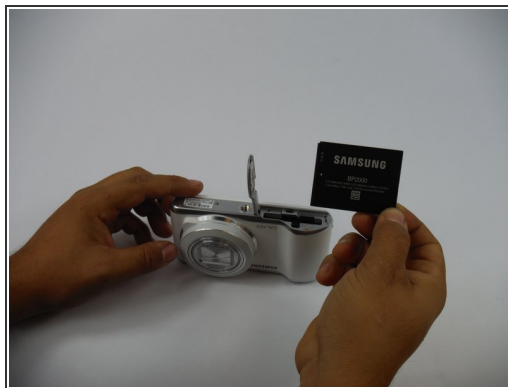
- Locate the small latch on the right side of the camera.
- Slide the latch to the left to open the battery compartment door.

### Step 3



- Locate the battery, a black cell held in by a small clip (indicated by an outfacing arrow).
- Pull the clip toward you to release the battery.

### Step 4



- Remove and discard the old battery.



## Step 5 — Screen



- While holding the camera, take note of each screw holding the screen to the main chassis of the camera.
- Hold the camera upright and lens facing towards you. There are a total of six 4mm PH00 screws to undo - two on the left, one screw on the right, and three along the bottom. Two of them are hidden behind the battery compartment door.

## Step 6



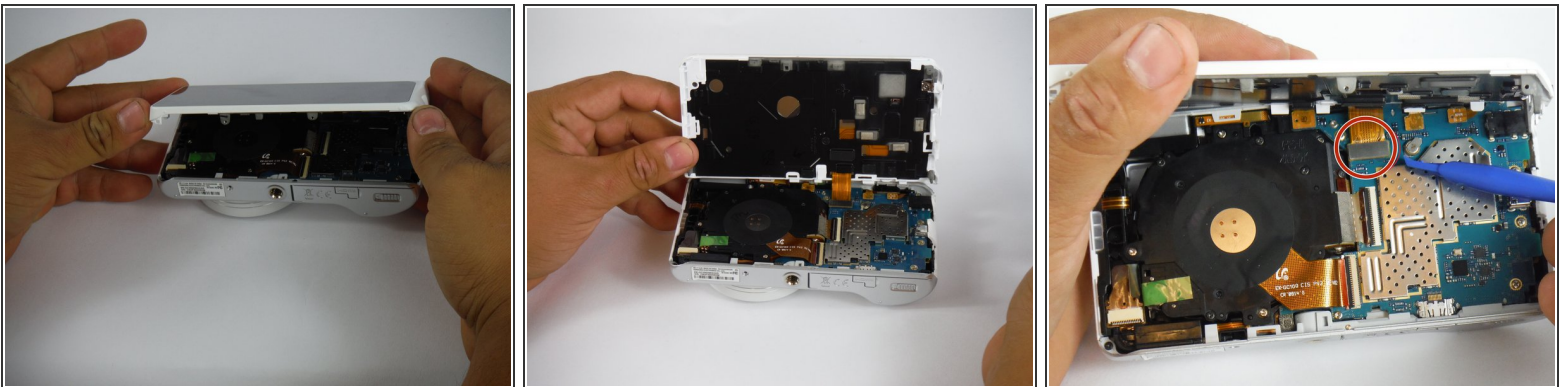
- Use the screwdriver to remove screws listed in step 2. There are a total of six 4mm screws.

## Step 7



- With the screws removed, use the plastic opening tool to gently pry the screen away from the main camera chassis. The ideal spot to start is at the corner with the headphone jack, as indicated in the picture.
- Once this side is free, gently work your way along the edge, all the way around the camera body.

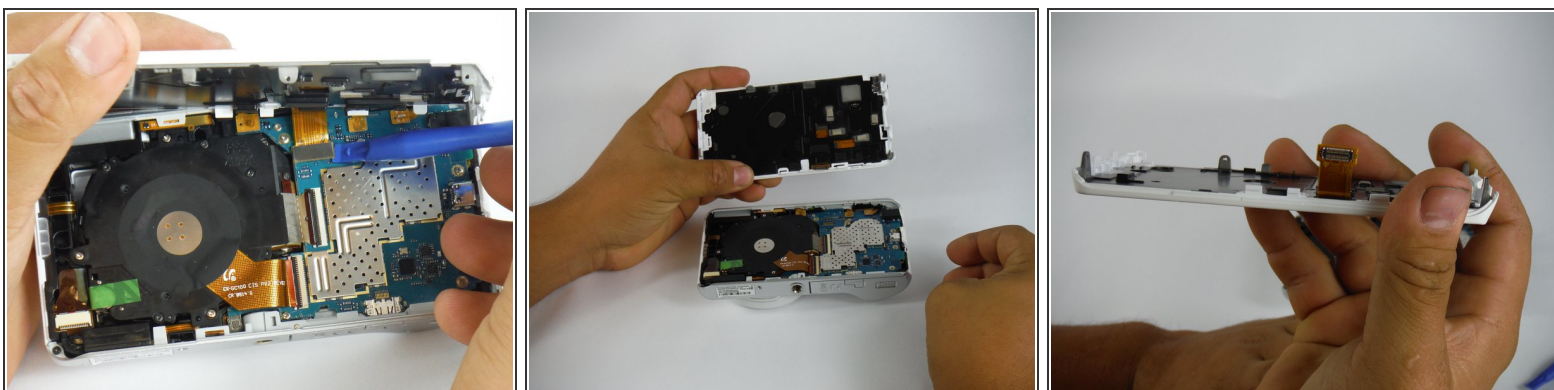
## Step 8



- With the screen freed, gently lay the camera on its face, so that the battery compartment faces up. Use both hands to lift the screen up and away.

**⚠ The screen is still attached to the motherboard by a ribbon cable. Be Gentle as it's very fragile.**

## Step 9



- With the screen separated from the main chassis, use the plastic opening tool to gently pry the edge of the ribbon cable connector from the motherboard.

## Step 10 — Screen Separated



**i** Now the screen is removed.

- Set the body aside in a safe place.

To reassemble your device, follow these instructions in reverse order.