



# Electric Wheelchair Battery Replacement

Replace the batteries on a Drive Electric Wheelchair.

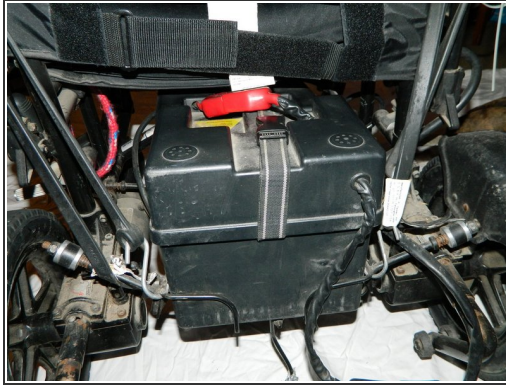
Written By: Paige Efting




# INTRODUCTION

Use this guide to replace the batteries on a Drive Electric Wheelchair.

## Step 1 — Battery to Electric Wheelchair



- Locate the two batteries under the back of the wheelchair.
- Pull the first battery pack to where you can reach the red battery connector.

 Be careful, the batteries are heavy.

## Step 2



- Disconnect the red battery connectors by pulling them apart.

### Step 3



- Remove the first and second battery from the wheelchair.

### Step 4



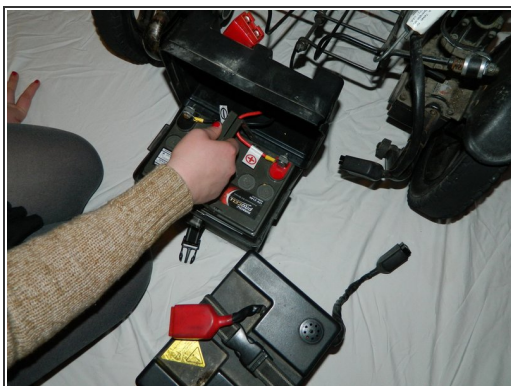
- Disconnect the black battery connectors by pulling them apart.

## Step 5



- One at a time, disconnect the clips holding each battery case closed.
- Open each case to reveal the battery inside.

## Step 6



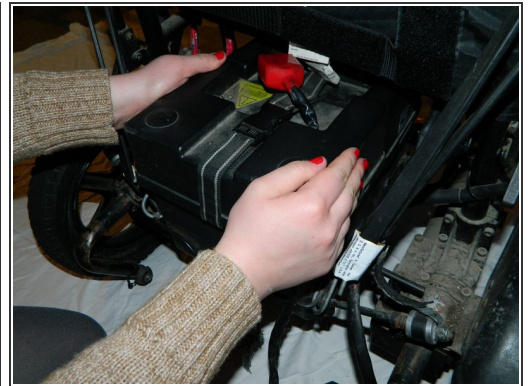
- Remove the old battery from each case.
- Put one new battery into each plastic case the old batteries were removed from.

## Step 7



- Reattach the clips on each of the battery's protective casings.

## Step 8



- Place the first battery back into the holder under the wheelchair.
  - ⓘ Make sure that it is pushed all the way to the front of the wheelchair.
- Place the second battery back into the holder.

## Step 9



- Reconnect the black battery connectors.
  - ⚠ Do not connect the red connectors until the black are connected.
- Reconnect the red battery connectors.
- Check that the chair turns on and is fully charged.