



HP Envy TouchSmart 15 Wireless Adapter Replacement

How to remove and replace the wireless adapter on this laptop.

Written By: Robert Patterson



INTRODUCTION

You may need to replace the wireless adapter if your computer can't connect to any wireless network. Be sure that you do not break the antenna connector wires.



TOOLS:

- [Phillips #0 Screwdriver](#) (1)



PARTS:

- [HP 690020-001 Wi-Fi Board](#) (1)

Step 1 — Battery



- Press the battery release tab and the battery will pop up.

Step 2



- Remove the battery from the laptop, it will come out easily.

Step 3 — Accessory Plate



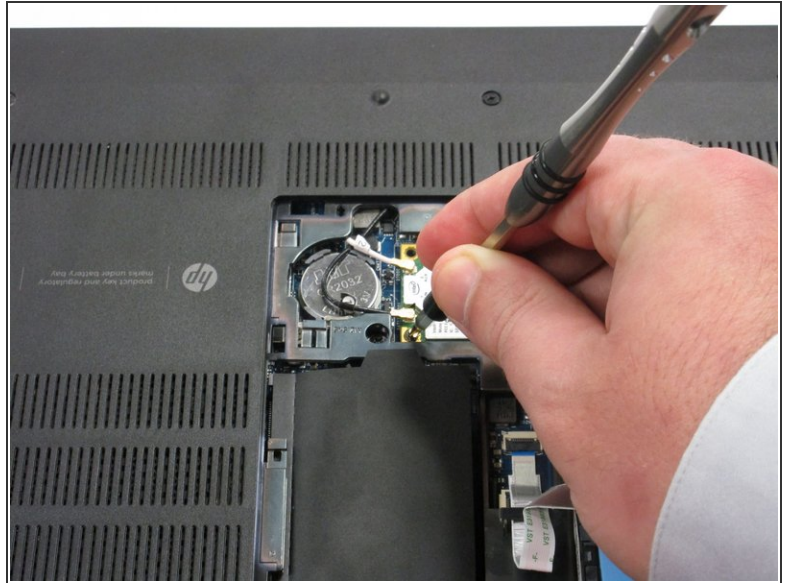
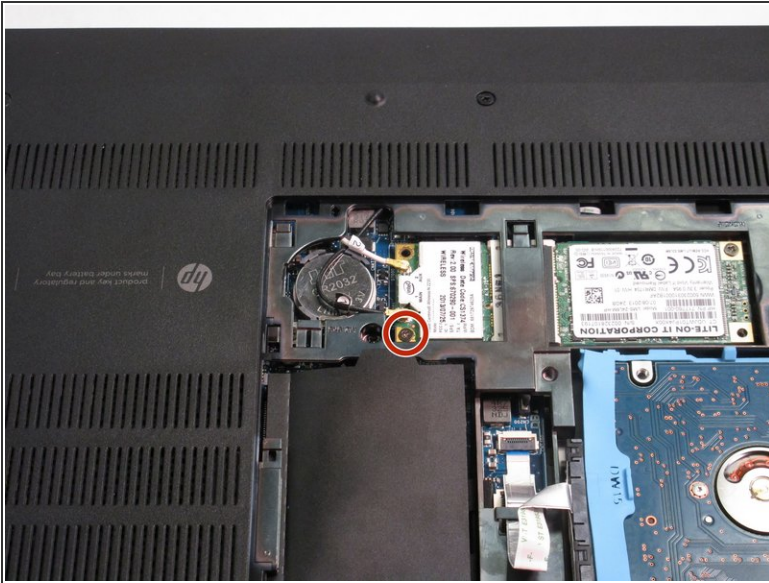
- Remove the single screw holding the accessory plate. This is a PH0 2.0x2.5 screw.

Step 4



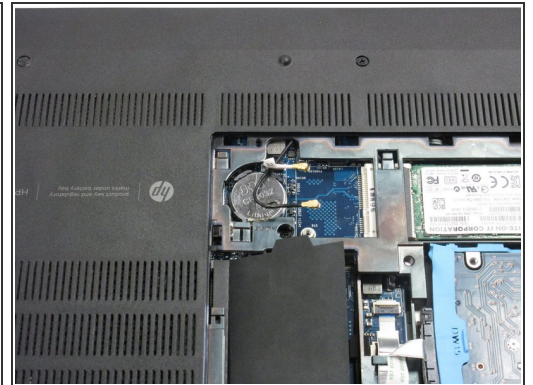
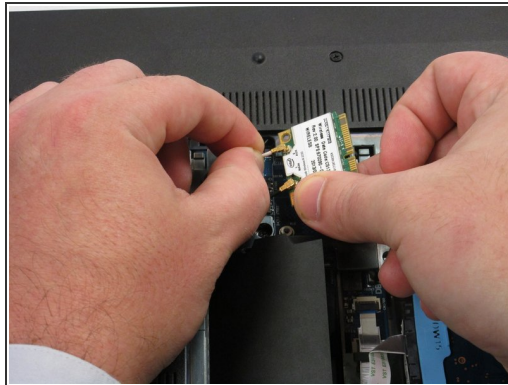
- Pry the accessory plate up from the back of the laptop by applying force upwards where the screw was removed.

Step 5 — Wireless Adapter



- Remove the screw with PH 0 screwdriver that is holding the wireless adapter in. This is PM 2.0x2.5 screws.

Step 6



- Hold the wireless adapter and gently remove the white and black wires from it. The connectors will come out straight up.

To reassemble your device, follow these instructions in reverse order.