



Baby Einstein Take Along Tunes LED Replacement

There are lighting issues where the LEDs stop working so replace the LEDs

Written By: Shreya Sunny



INTRODUCTION

In this guide, you will learn how to remove and replace the individual LED lights inside the device



TOOLS:

- [Phillips #1 Screwdriver](#) (1)
- [iFixit Opening Tool](#) (1)



PARTS:

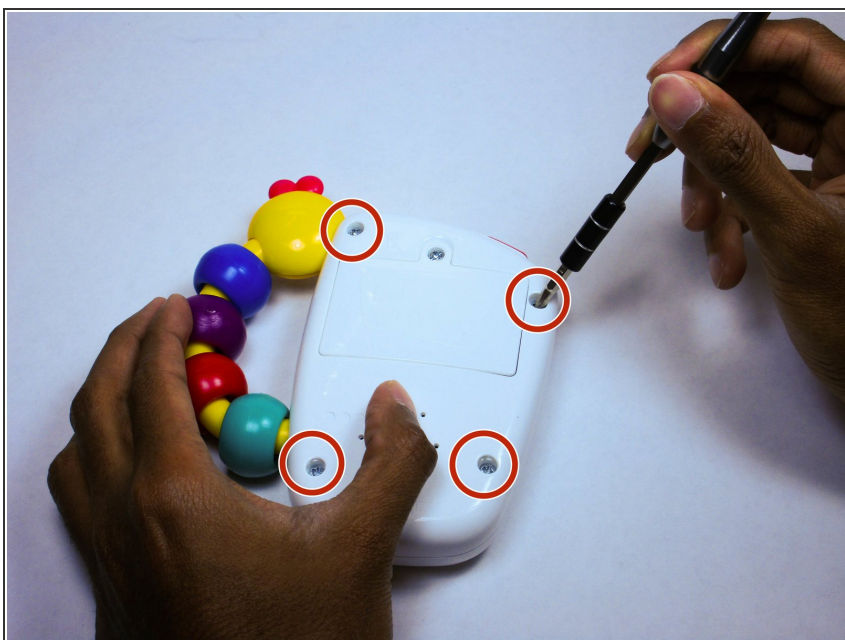
- [LED Bulbs](#) (1)

Step 1 — LED



- Place the device face down on a flat surface, so that the screws on the back are facing the ceiling.

Step 2



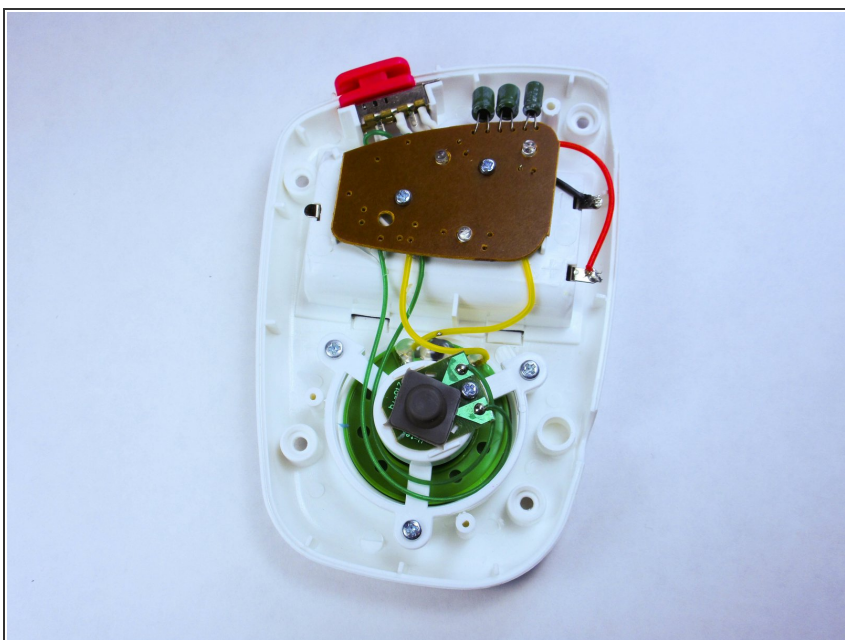
- Using a screwdriver loosen the four screws connecting the body of the device together.

Step 3



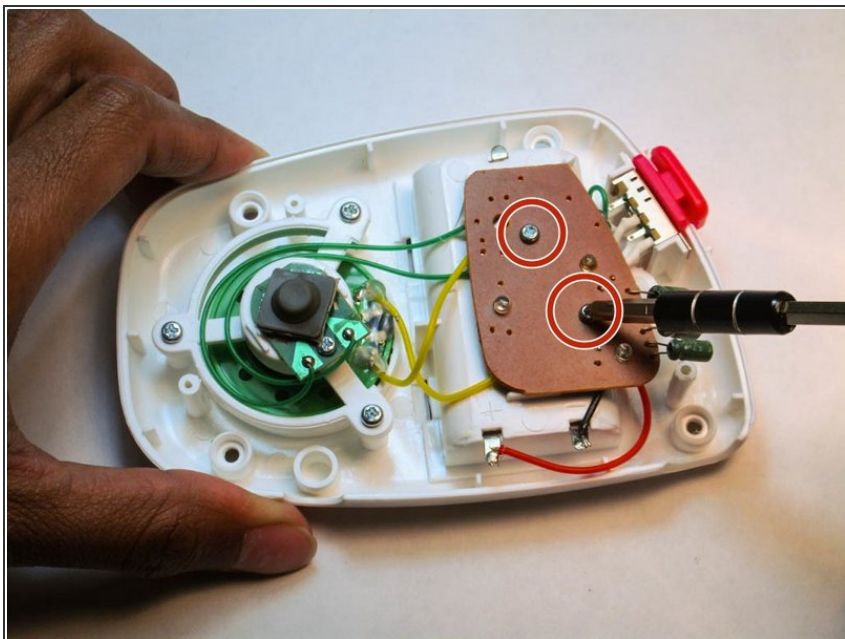
- Once unscrewed, pop the back of the device off using the plastic opening tool.

Step 4



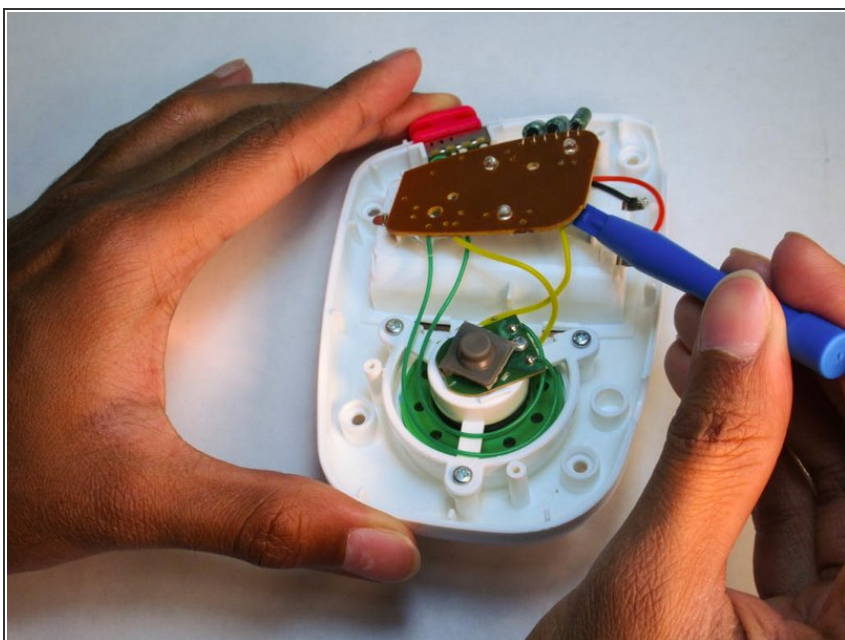
- Once unscrewed, take the back of the body and put it aside. We will be working with the front part of the device.

Step 5



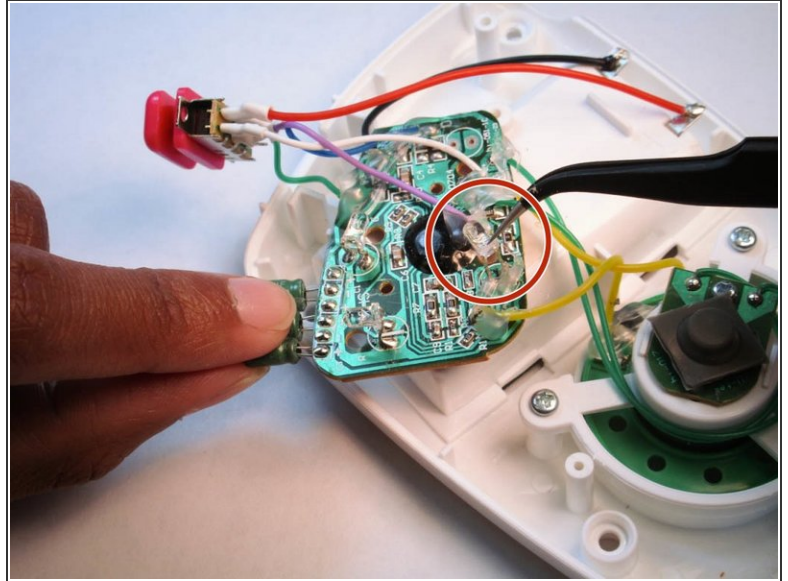
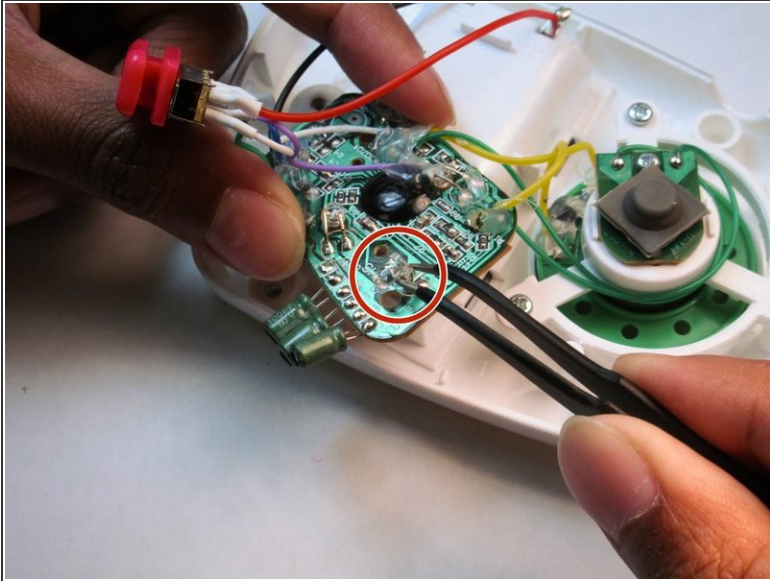
- Using a screwdriver loosen the screws on the lights panel.

Step 6



- Using a plastic opening tool pop the light panel off. Be careful as to not rip any of the wires from the panel.

Step 7



- Carefully pull the LED lights off with a pair of tweezers. Once off, put in and connect a replacement.

To reassemble your device, follow these instructions in reverse order.