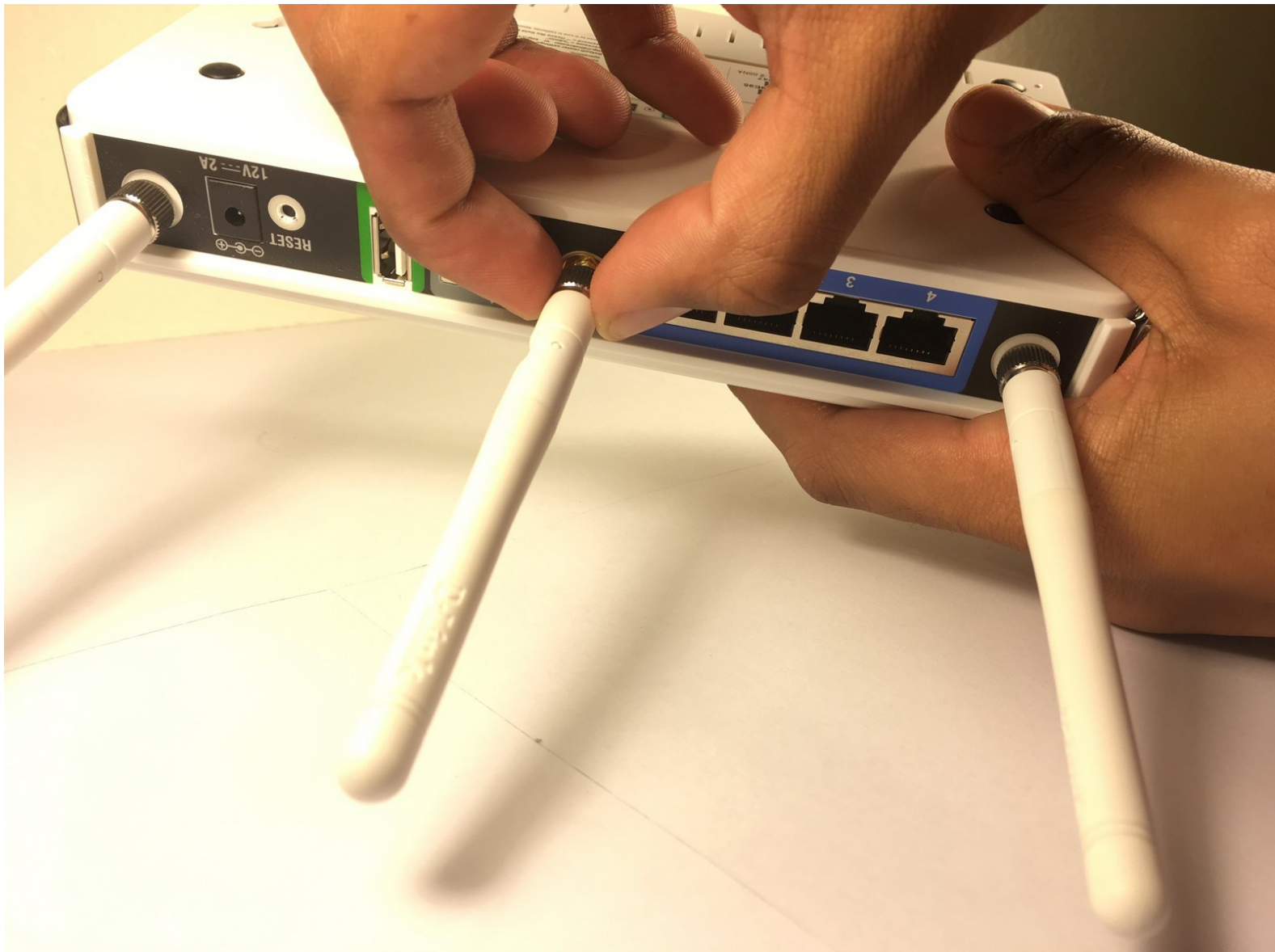




How To Repair An Overheating D-LINK DIR-655 Wireless Router

Stop your D-Link DIR-655 Wireless Router from overheating.

Written By: Chance Daniel



INTRODUCTION

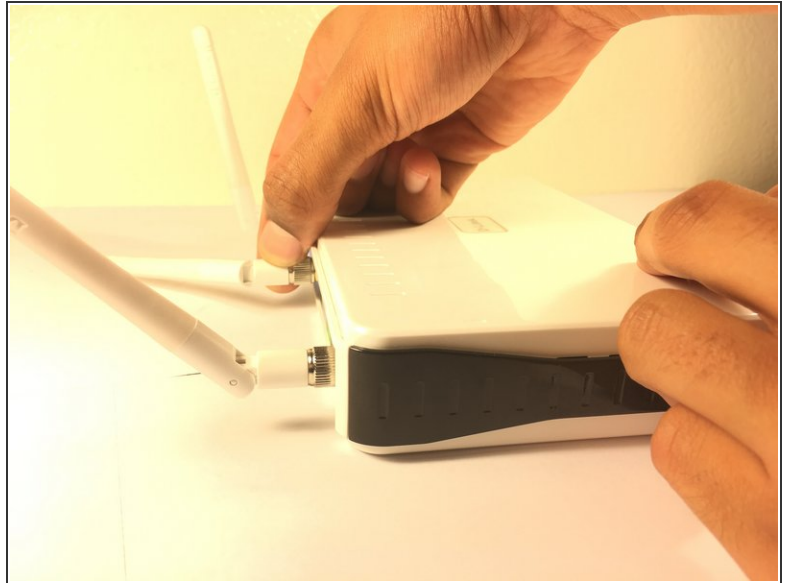
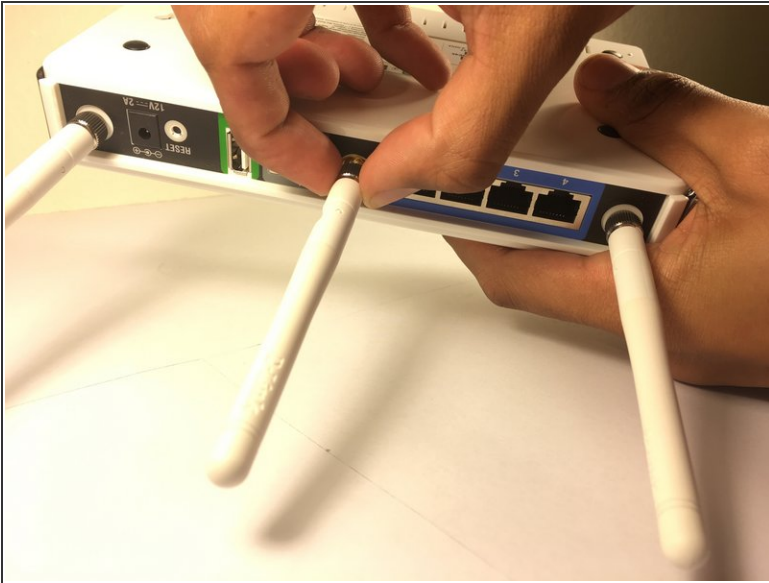
Have you noticed your wireless router is overheating and shutting off? This can be caused by dust blocking the vents or gathering on the heatsinks. Use this guide to disassemble and clear out your router to get it back in working order.



TOOLS:

- [Philips screwdriver](#) (1)
 - [iFixit Opening Tools](#) (1)
 - [Microfiber Cleaning Cloths](#) (1)
-

Step 1 — How To Repair An Overheating D-LINK DIR-655 Wireless Router



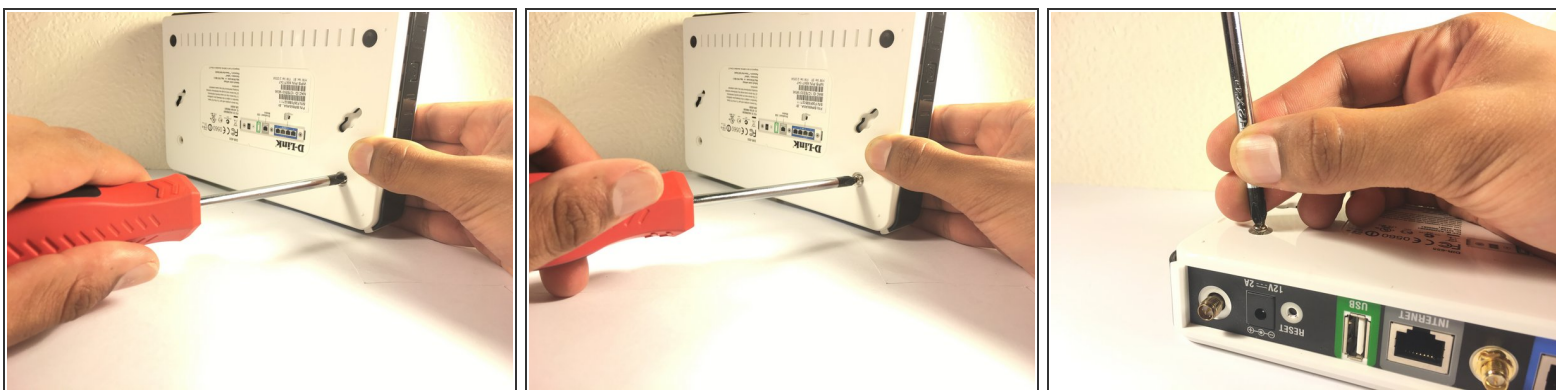
- Start by removing the three antennas by twisting each one in a counter-clockwise direction when facing the back panel.

Step 2



- Using your flathead screwdriver or plastic opening tool, gently pry the top two screw covers out of the router's case.

Step 3



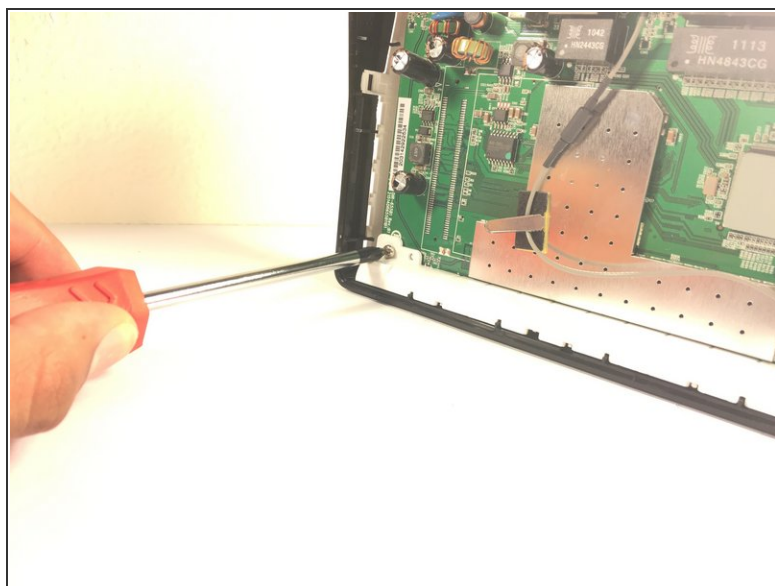
- Using your Phillips screwdriver, turn the screw counter-clockwise to remove it from the assembly.
- Do the same for the second screw.

Step 4



- Gently pry the top of the case from the sides and bottom of the router.
- After freeing the top, remove it and set it aside.

Step 5



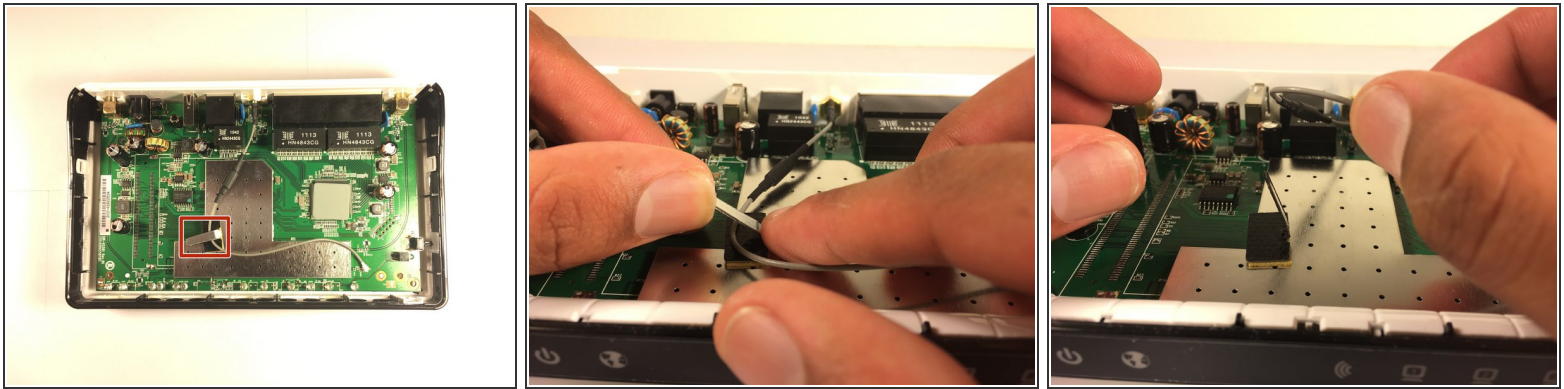
- With your Phillips screwdriver, remove both screws by rotating in a counter-clockwise direction.

Step 6



- After removing the screws, lift the white LED cover up and off of the circuit board.

Step 7



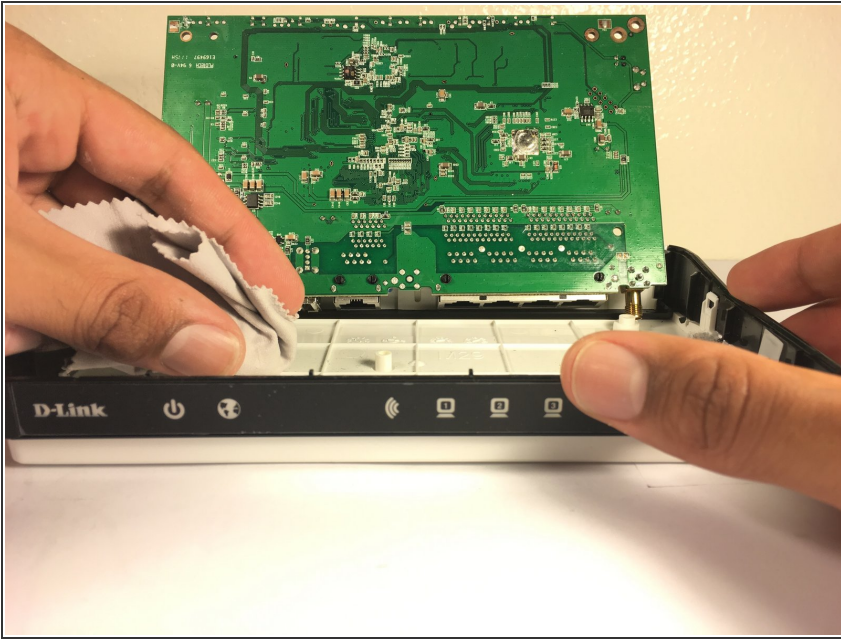
- Next, bend up the clip holding down the middle antenna wire.
- Gently, unhook the wire and move it out of the way.

Step 8



- With the wire out of the way, separate the circuit board from the bottom assembly.
- ⚠ Be sure not to pinch or bend the antenna wire when you lift the circuit board.

Step 9



- Wipe away any dust from the the vents to ensure proper airflow.

To reassemble your device, follow these instructions in reverse order.