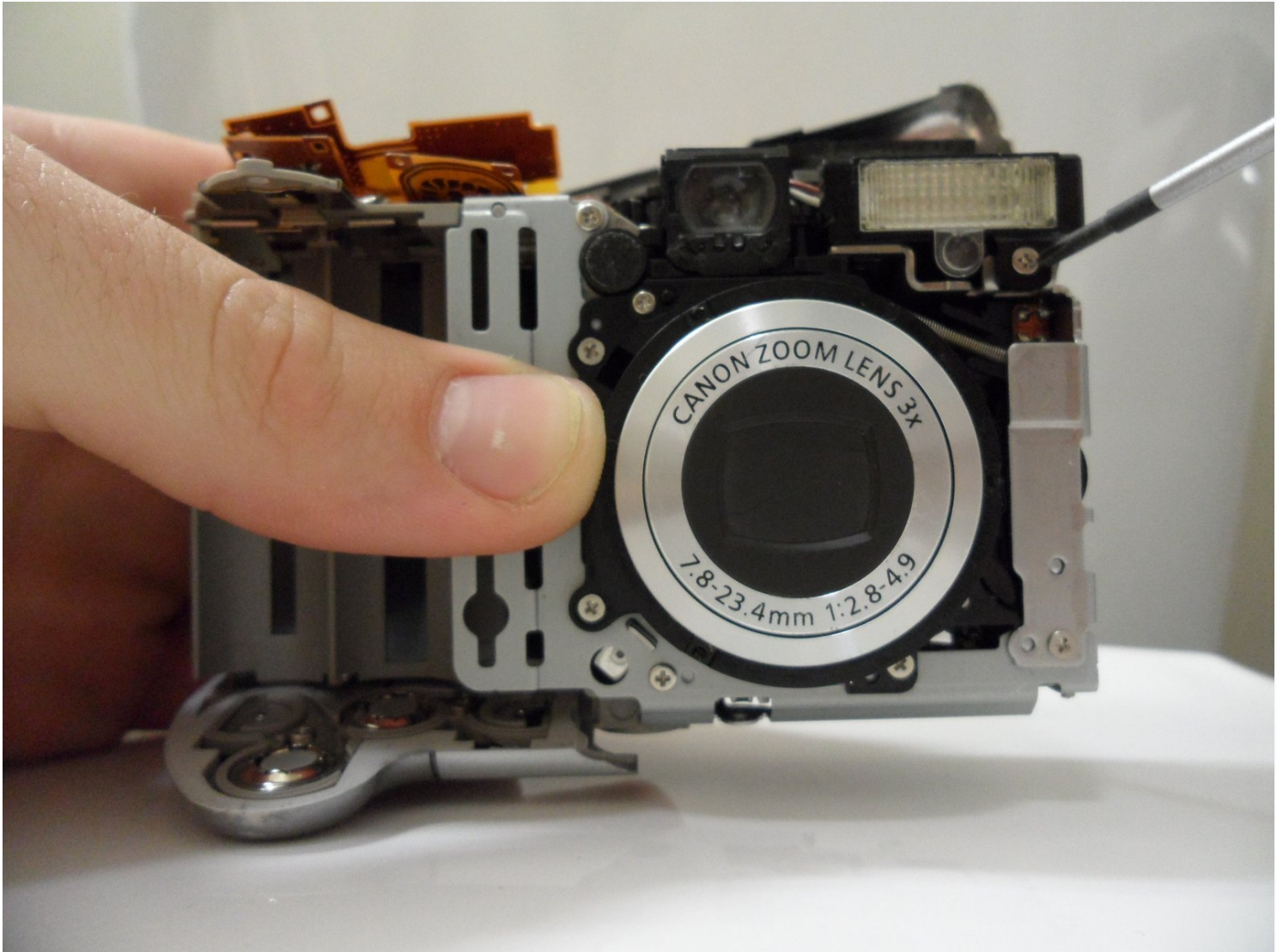




# Canon PowerShot A80 Flash Assembly Replacement

This guide provides an outline of how to...

Written By: ryne contreras



# INTRODUCTION

This guide provides an outline of how to replace the flash assembly on the Canon PowerShot A80 camera. The flash assembly is a retractable light bulb fixture that emits a quick burst of background light. With prolonged use, the flash assembly's light bulb can burn out, necessitating replacement for the camera to function correctly.

To prevent any damage to the camera, ensure that the environment is completely dry and free of any water that could accidentally spill onto the sensitive camera electronics. Additionally, make sure the camera is turned off to avoid any harm to the camera's motherboard (refer to step 15).

Exercise caution in Step 5 when removing the lid from the main body. The mylar cable attached to the top lid is fragile and may become damaged or disconnected. Apply gentle and careful pressure when removing the lid.

When removing the flash box in Step 18, use caution and remove it with a rubber glove or a screwdriver with a rubber handle. This precaution will prevent electric shock in case the capacitor inside the flash has not been discharged.



## TOOLS:

[Phillips #00 Screwdriver](#) (1)

[Lead-Free Solder](#) (1)

[Soldering Iron](#) (1)

[iFixit Opening Tool](#) (1)

---

## Step 1 — Back Cover



- Remove the three Phillips #00 screws from the bottom of the camera.

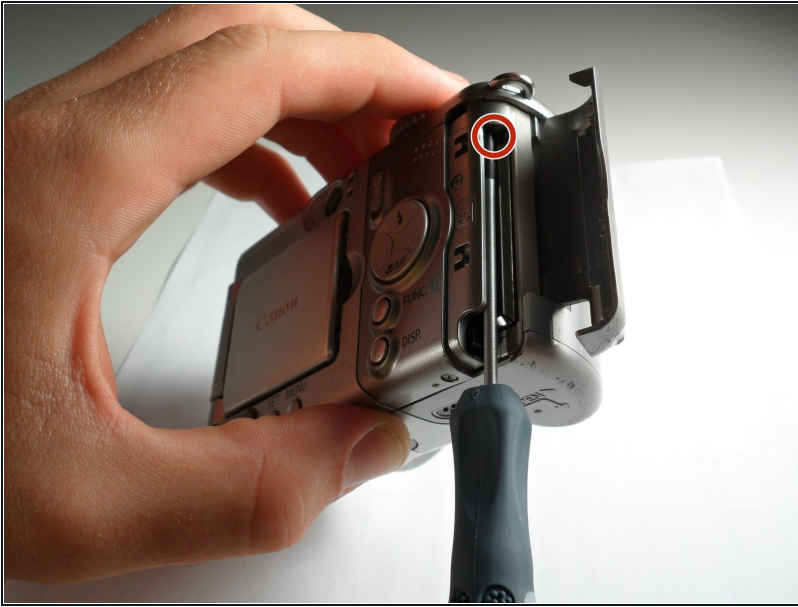
## Step 2



- Open the door to the CompactFlash memory card slot by sliding it towards you and swinging it open.
- Remove the memory card if it is still in the camera.
- Use the Phillips #00 screwdriver to remove the single screw underneath the memory card slot door.

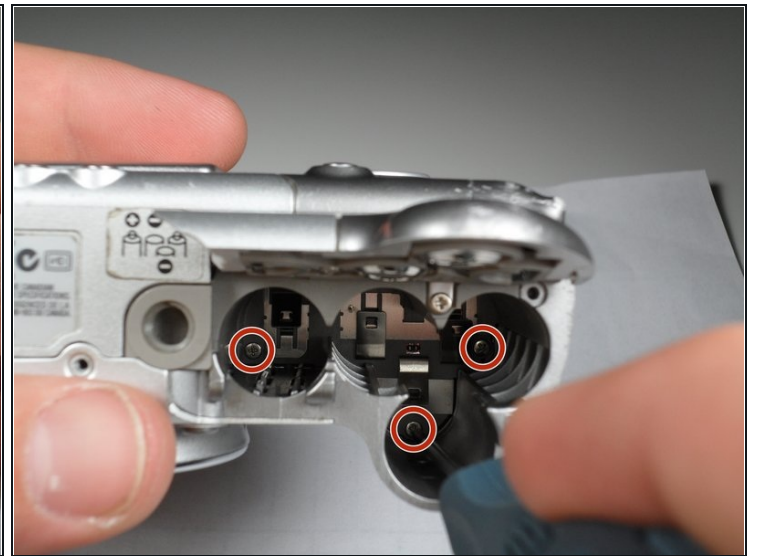


### Step 3



- Remove the Phillips #00 screw located inside the top of the memory card compartment.

### Step 4



- Open the battery compartment door at the bottom of the camera by sliding the latch to the right and then sliding the door down.
  - Remove the batteries from the compartment.
  - Remove the three Phillips #00 screws located inside the battery compartment.
- ⓘ The screw on the left is longer than the other two.

## Step 5



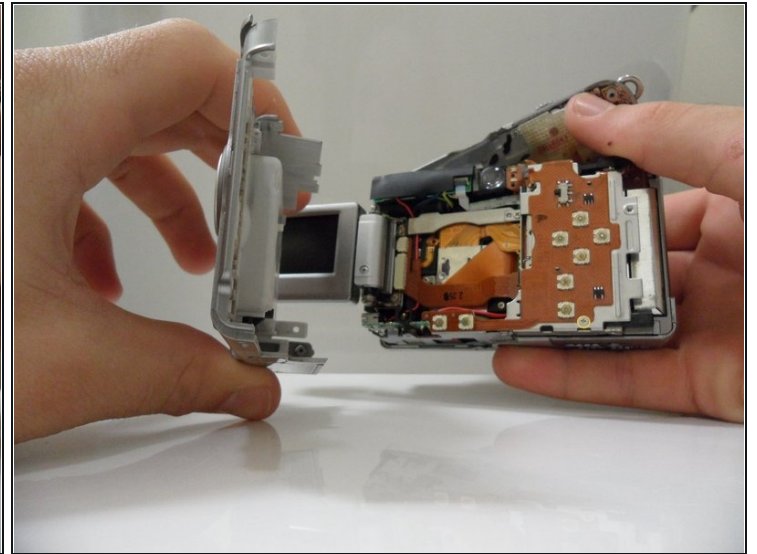
- Remove the top lid of the camera.
  - ⚠ Be cautious of the fragile mylar cable that connects the lid to the main body of the camera.
  - ⚠ Removing the lid takes a little force. Do this gently. There may be a snapping sound.
- The door to the memory card compartment will be freed and should be removable now.
- ① In other versions of this camera, there is a tab that secures the top from the wrist strap. If yours has this, you won't be able to completely separate the top until you have removed the top screw in Step 8.

## Step 6



- Remove the two Phillips #00 screws from the side of the camera.
- Open the small rubber door below this screw that covers the connectors.

## Step 7



- Open and pivot the LCD screen to its widest open position.
  - Remove the rear cover by pulling it straight away from the body of the camera.
- ☒ When reassembling the camera, remember to replace the screws in the same location from which you removed them. Otherwise, you may damage the camera.



## Step 8 — Front Cover



- Using a Phillips #00 screwdriver, remove the 3.3 mm long top screw located on the side of the camera. This screw holds the side panels and the front cover together.

ⓘ The side panel may get stuck on the internal wires, so gently wiggle this panel loose.

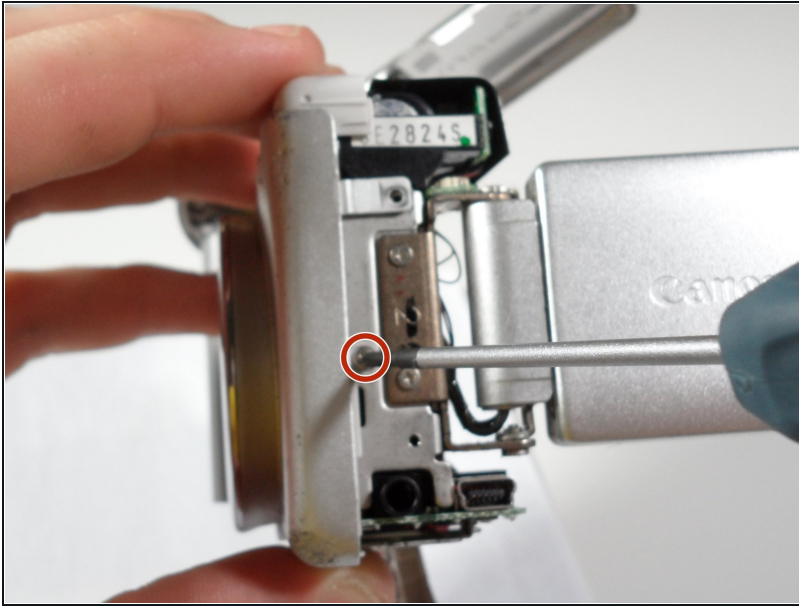
## Step 9



- Gently remove the side panel by pulling it away from the camera.

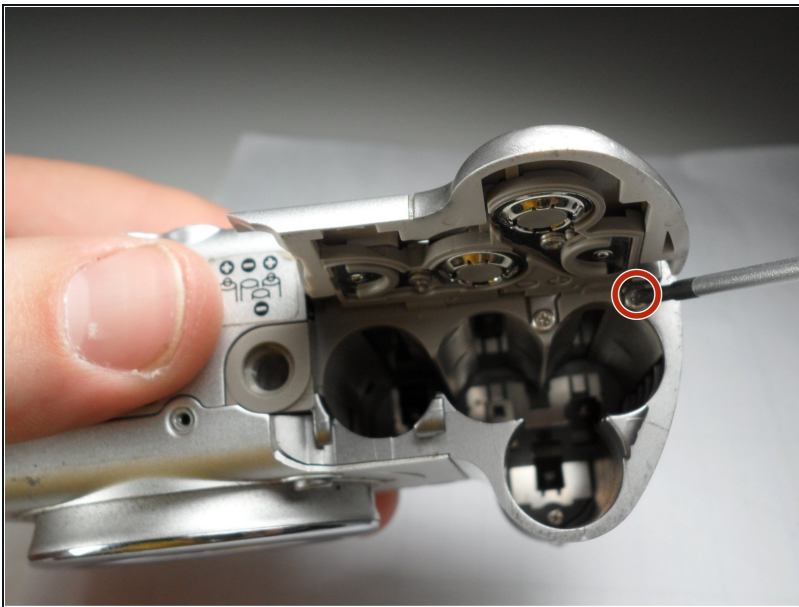
ⓘ The side panel may get stuck on the internal wires, so gently wiggle this panel loose.

## Step 10



- Using the Phillips #00 screwdriver, unscrew the 2.4 mm long screw that holds on the front panel underneath the side panel.

## Step 11



- Underneath the battery cover there is a 3.8 mm screw in the corner. Using the Phillips #00 screwdriver, remove this screw.

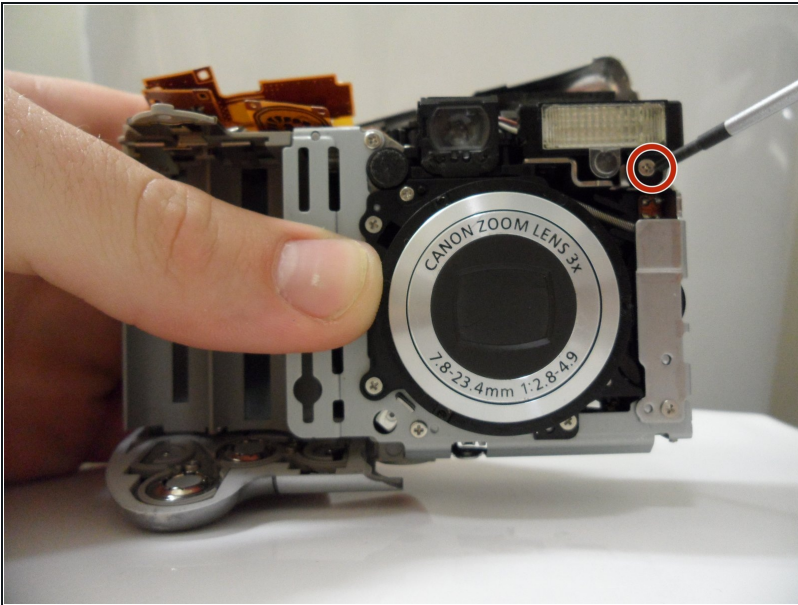


## Step 12



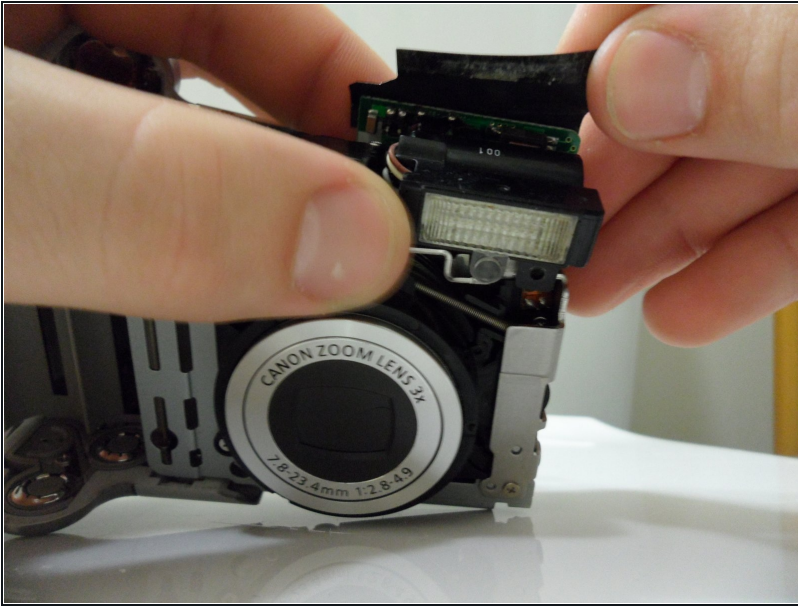
- Gently pull up on the front cover to remove it from the body.

## Step 13 — Flash Assembly



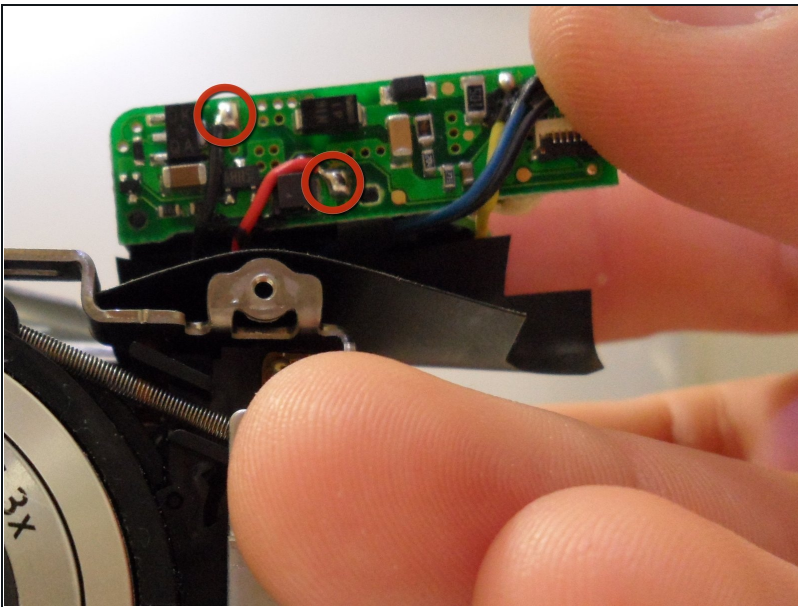
- Unscrew the 3.8 mm screw under the flash housing.

## Step 14



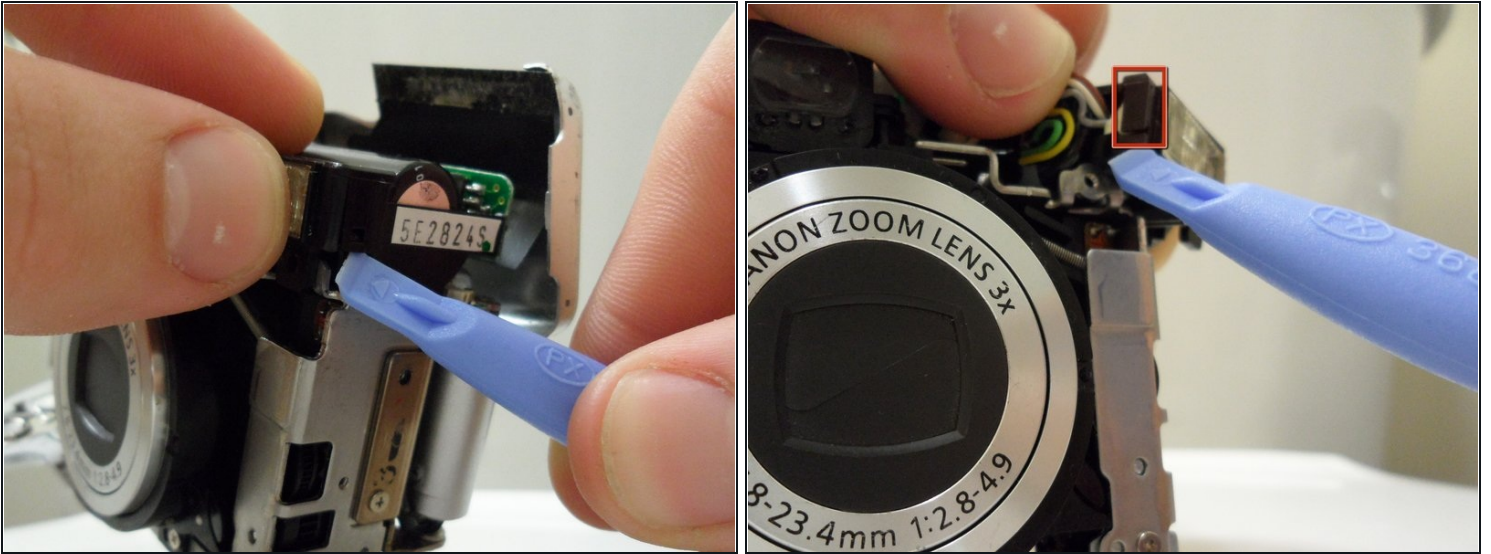
- Lift up black cover.
- ① Black cover is attached to the top of the capacitor with adhesive.

## Step 15



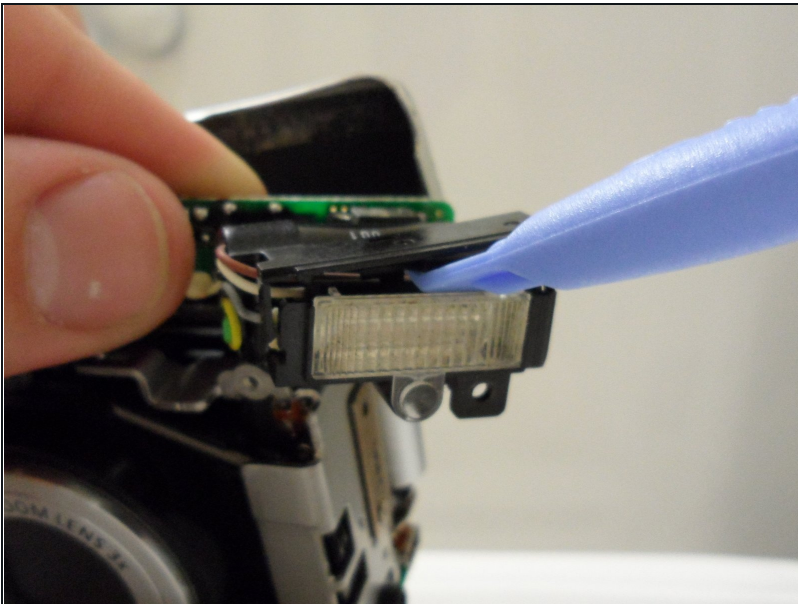
- ① If the entire flash housing needs to be replaced...
- Unsolder the black and red wires from the back of the circuit board behind the flash.

## Step 16



- Use the opening tool to unclip both sides of the black cover on top of the flash

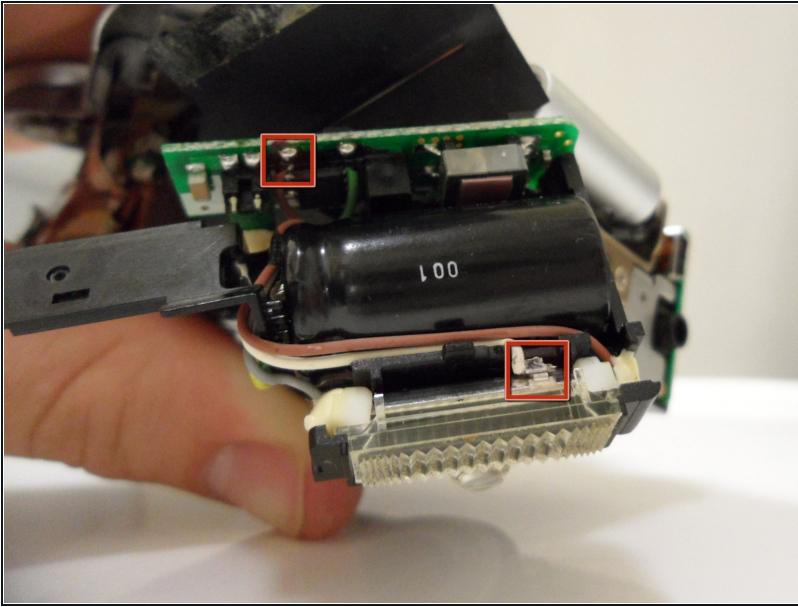
## Step 17



- Use the opening tool to lift off the black flash cover.

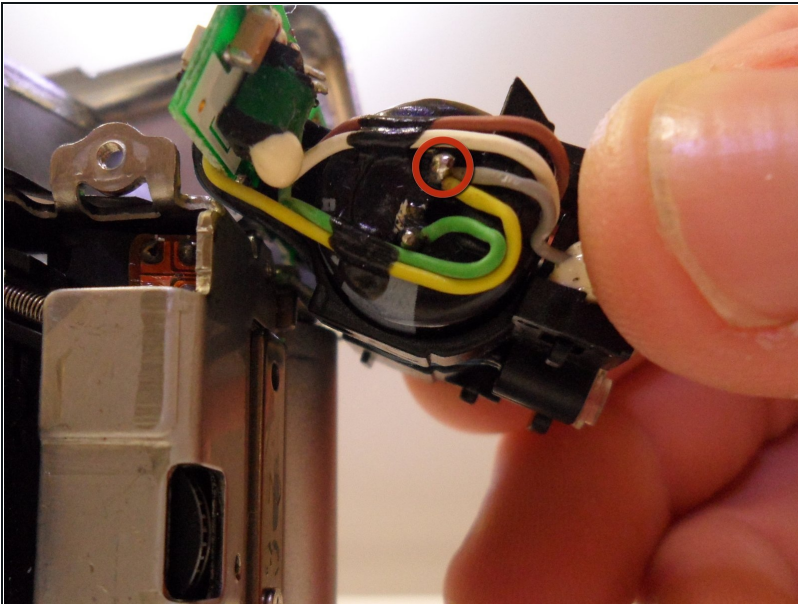


## Step 18



- ① If the flash needs to be fixed...
- Unsolder the brown wire from the circuit board.
- ① The piece of metal that attaches these parts will have to be bent back.
- ⚠ Make sure the capacitor is discharged before these steps are attempted. Do so with a screwdriver with a rubber handle.

## Step 19



- Unsolder the gray wire attached to the capacitor.
- ① This is the last wire that connects to the flash.

To reassemble your device, follow these instructions in reverse order. Remember to resolder any wires that were unsoldered.