

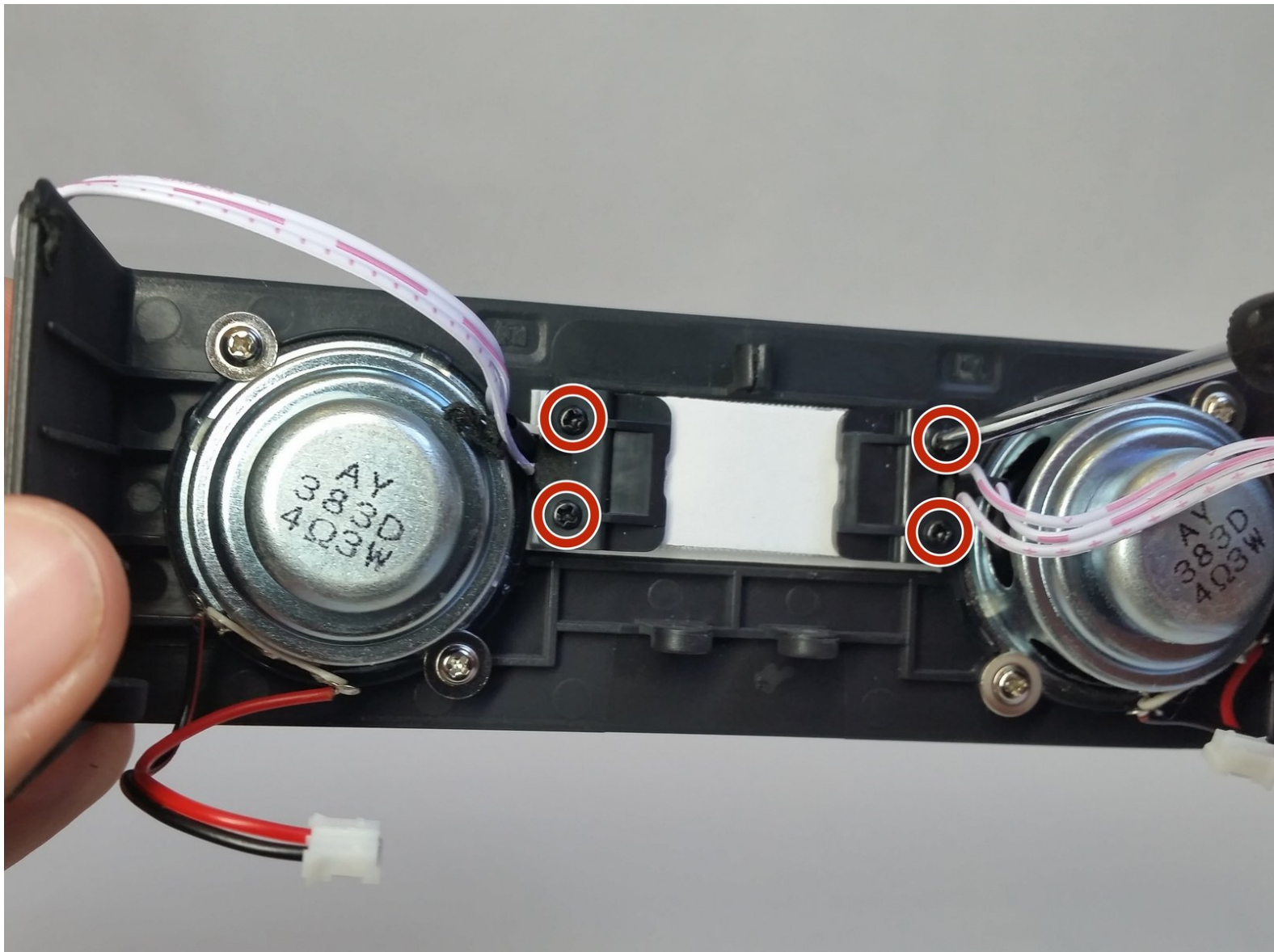


# Photive Artisan Portable Bluetooth Speaker

## Front Panel Light Replacement

Replace the front light for the Photive Artisan Portable Bluetooth Speaker.

Written By: David Lennon



---

## INTRODUCTION

Use this guide to replace the front light in your speaker.

---

### TOOLS:

- [Phillips #0 Screwdriver](#) (1)
-

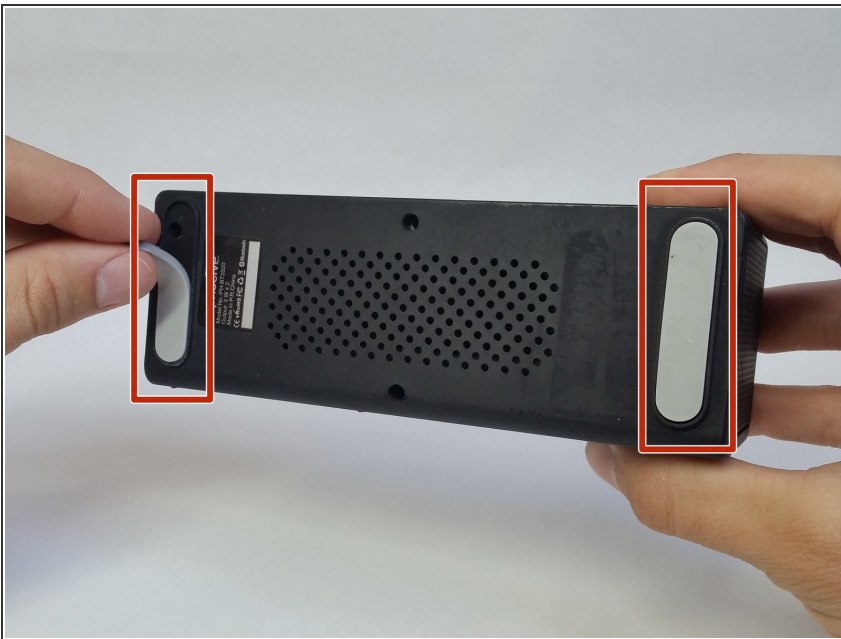
## Step 1 — Front Panel



⚠ Before continuing, be sure your device is powered off.

- Remove two 9mm Phillips #0 head screws from the bottom side of the speaker.

## Step 2



- Peel back the rubber feet from either side of the base.

### Step 3



- Remove four 9mm Phillips #0 head screws from the bottom of the speaker.

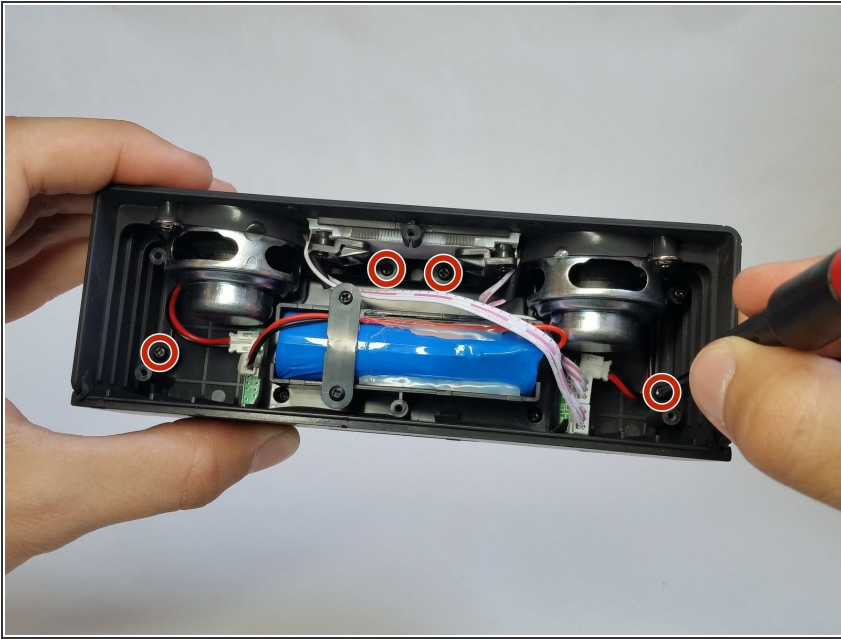
### Step 4



- Separate the base of the speaker from the upper housing.

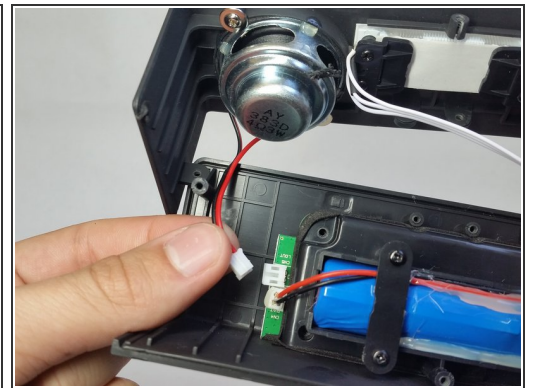


## Step 5



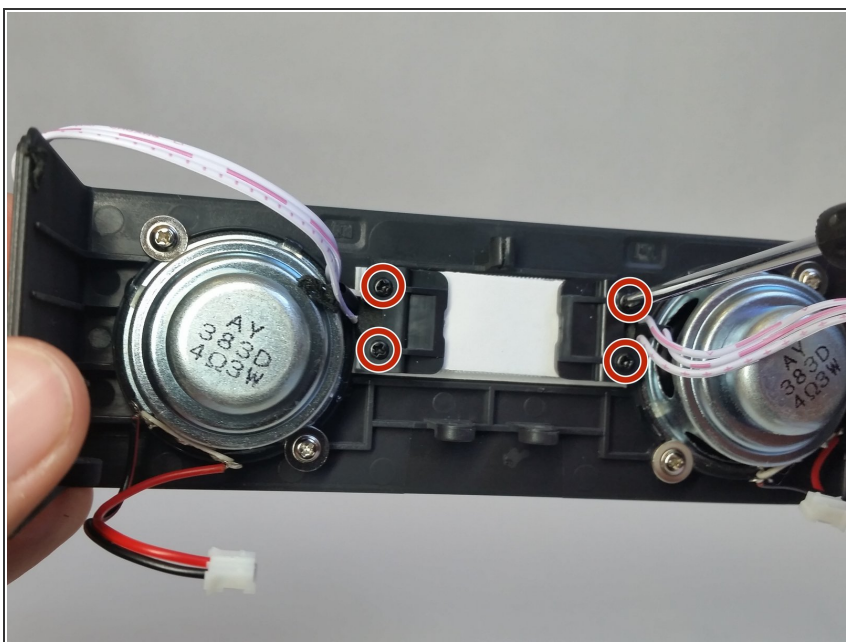
- Remove four 9mm Phillips #0 head screws from the inside of the speaker case.

## Step 6



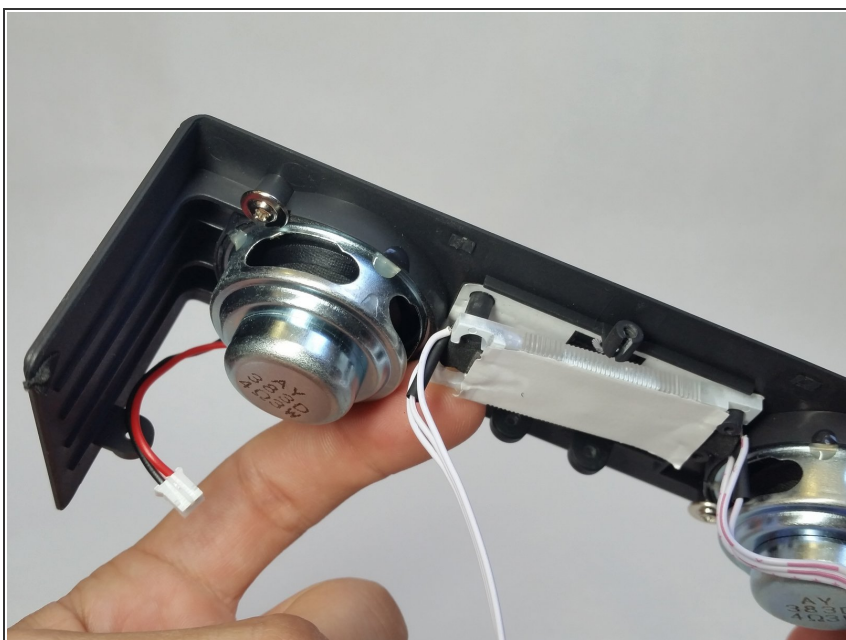
- Remove all cable connectors from the speaker motherboard.

## Step 7 — Front Panel Light



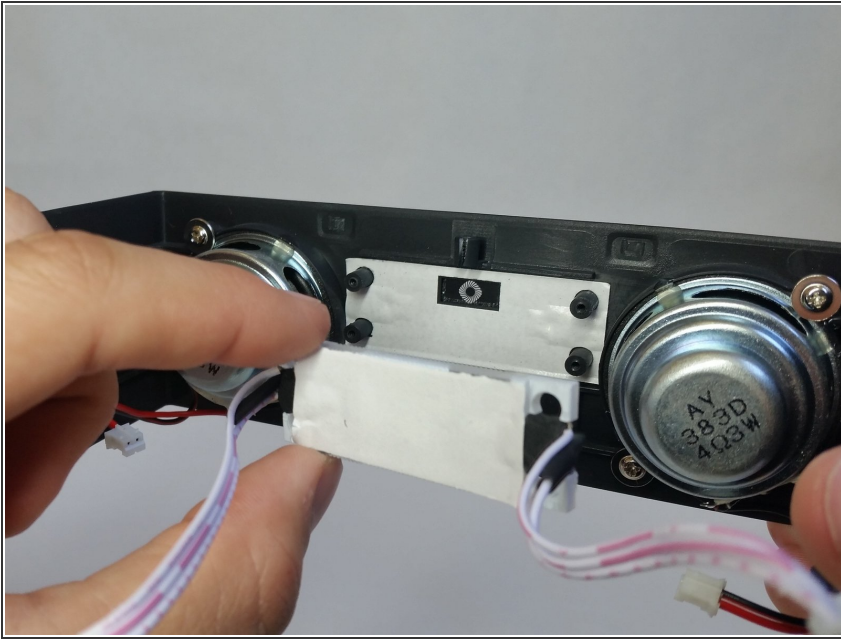
- Remove four Phillips #0 head screws from the front panel.

## Step 8



- Using the tip of your finger, gently separate the front panel display from its mount.

## Step 9



- Remove the front panel display.

To reassemble your device, follow these instructions in reverse order.