

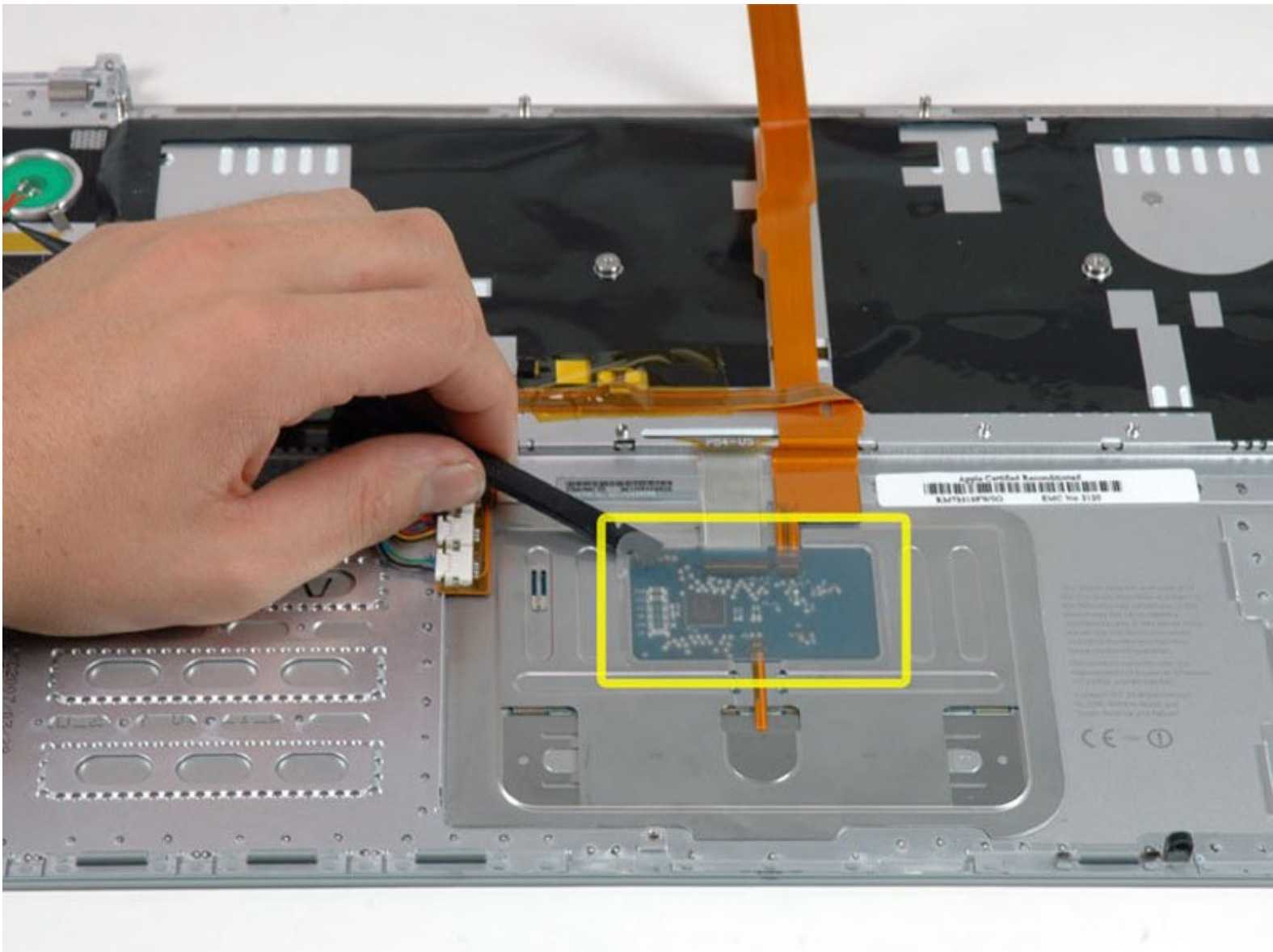


# MacBook Pro 15" Core 2 Duo Model A1211

## Upper Case Cable Replacment

Replaces the cable that connects the upper case, power button, trackpad, sleep sensor, bluetooth board, and keyboard to the logic board.

Written By: Matt Barnes



## INTRODUCTION

Replaces the cable that connects the upper case, power button, trackpad, sleep sensor, bluetooth board, and keyboard to the logic board.



### TOOLS:

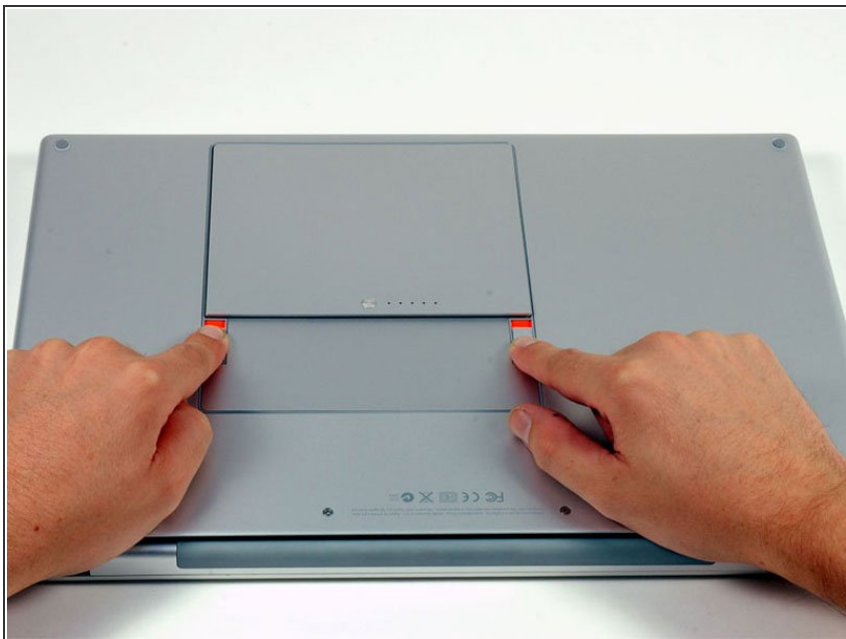
- [Phillips #00 Screwdriver](#) (1)
- [Spudger](#) (1)
- [T6 Torx Screwdriver](#) (1)



### PARTS:

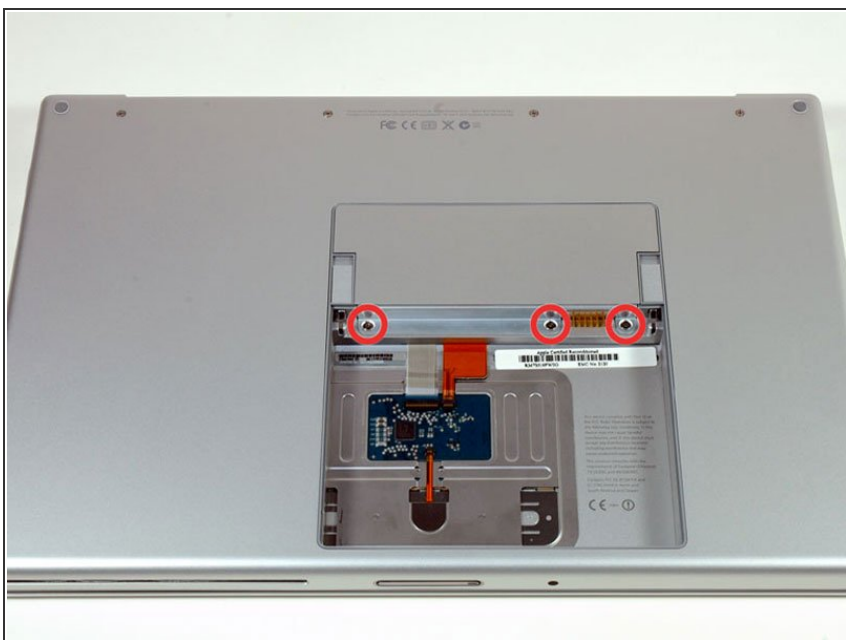
- [MacBook Pro 15" \(Model A1211\) Upper Case Cable](#) (1)

## Step 1 — Battery



- Use your fingers to push both battery release tabs away from the battery, and lift the battery out of the computer.

## Step 2 — RAM Shield



- Remove the three identical Phillips screws from the memory door.

## Step 3



- Lift the memory door up enough to get a grip on it, and slide it toward you, pulling it away from the casing.

## Step 4 — Upper Case



- Remove the two 2.8 mm Phillips screws in the battery compartment near the latch.

## Step 5



- Remove the following 6 screws:
  - Two 10 mm T6 Torx screws on either side of the RAM slot.
  - Four 14.5 mm Phillips screws along the hinge.

## Step 6



- Remove the four 3.2 mm Phillips screws on the port side of the computer.

## Step 7



- Rotate the computer 90 degrees and remove the two 3.2 mm Phillips screws from the rear of the computer.

## Step 8



- Rotate the computer 90 degrees again and remove the four 3.2 mm Phillips screws from the side of the computer.



## Step 9



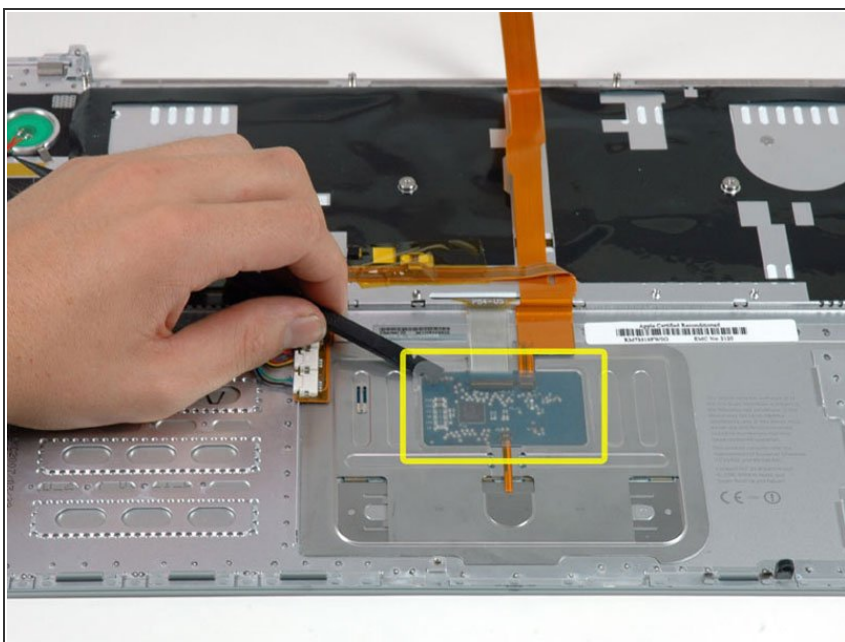
- ❗ Do not yank the upper case off quickly. The case is attached to the logic board via a ribbon cable.
- Lift up at the rear of the case and work your fingers along the sides, freeing the case as you go. Once you have freed the sides, you may need to rock the case up and down to free the front of the upper case (there are some hidden plastic clips that need to be clicked off).

## Step 10



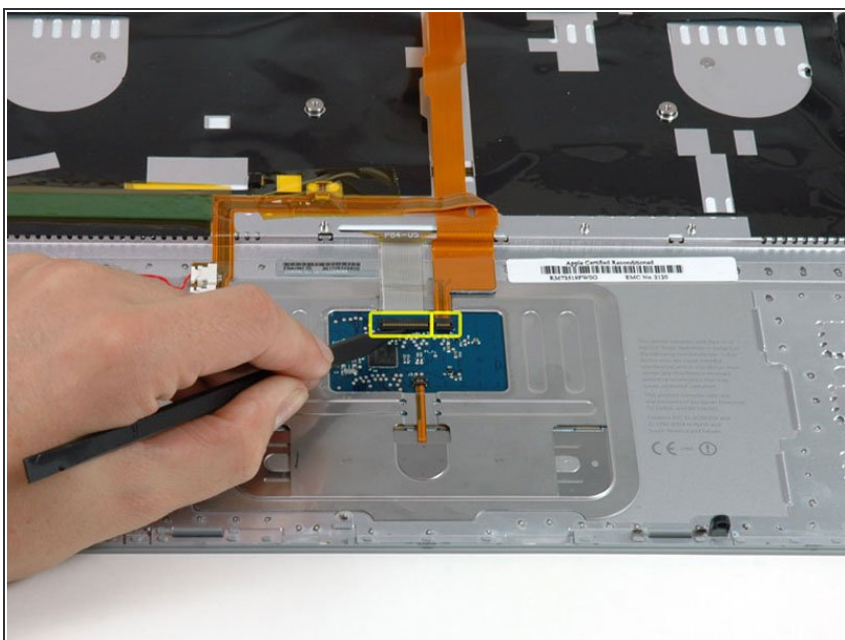
- Disconnect the trackpad and keyboard ribbon cable from the logic board, removing tape as necessary.
- Remove the upper case.

## Step 11 — Upper Case Cable Replacment



- Use a spudger to pry up the translucent plastic sheath covering the keyboard connector.

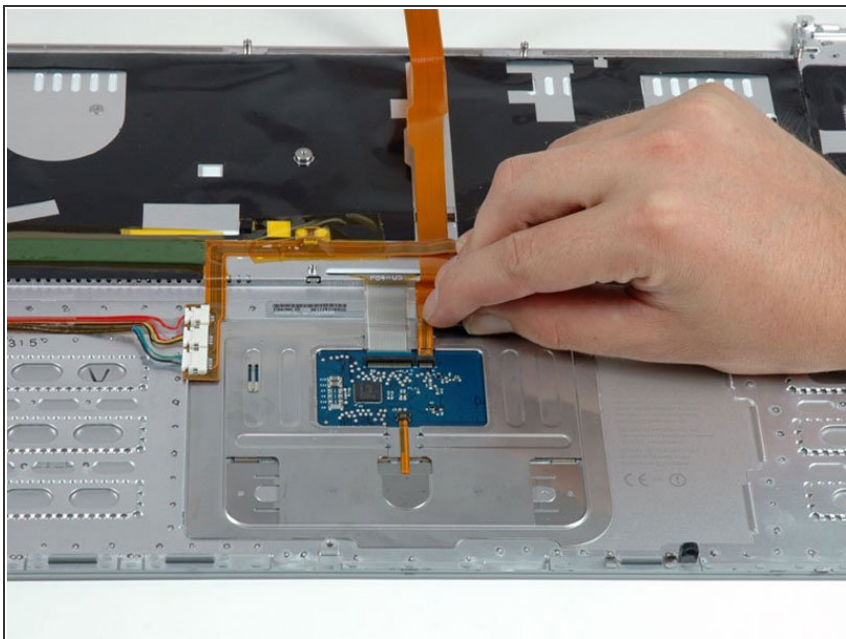
## Step 12



- Use the tip of a spudger to flip up the black plastic flaps locking down the keyboard and keyboard backlight ribbon cables.

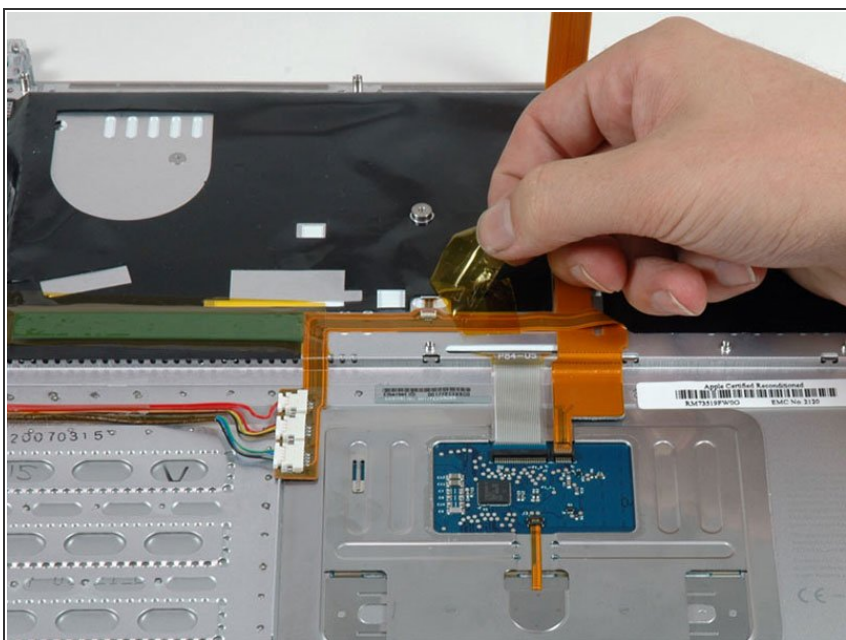


## Step 13



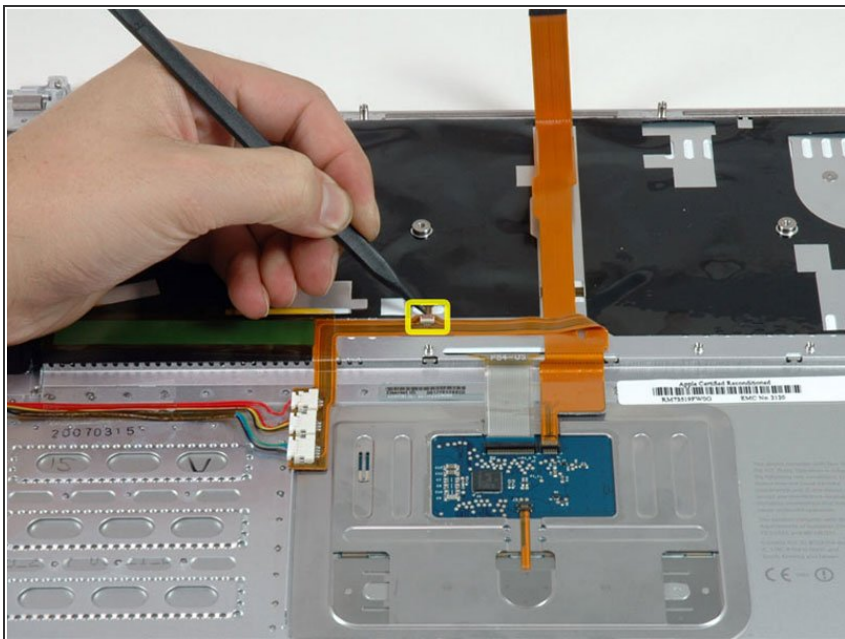
- Slide the orange keyboard backlight ribbon out of its connector.

## Step 14



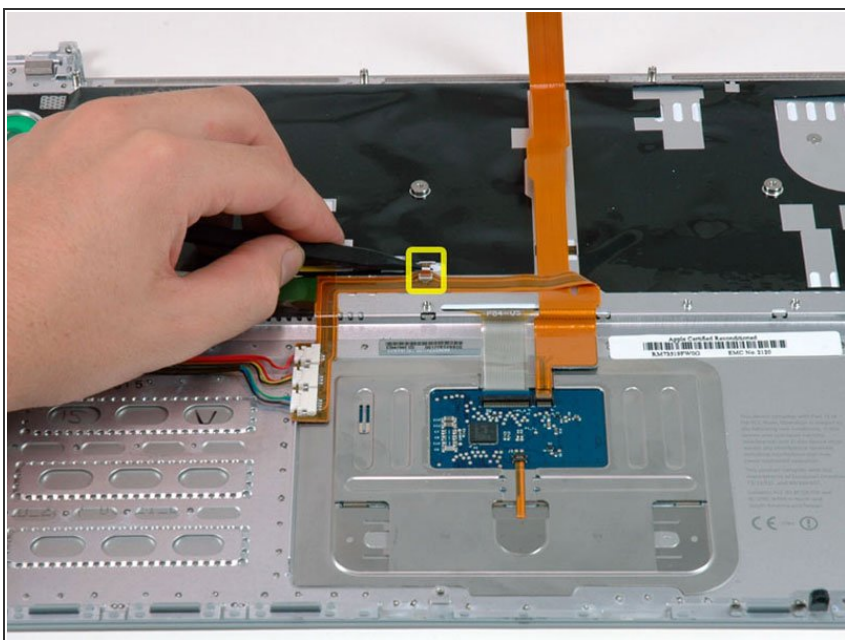
- Peel up the orange tape covering the keyboard backlight connector.

## Step 15



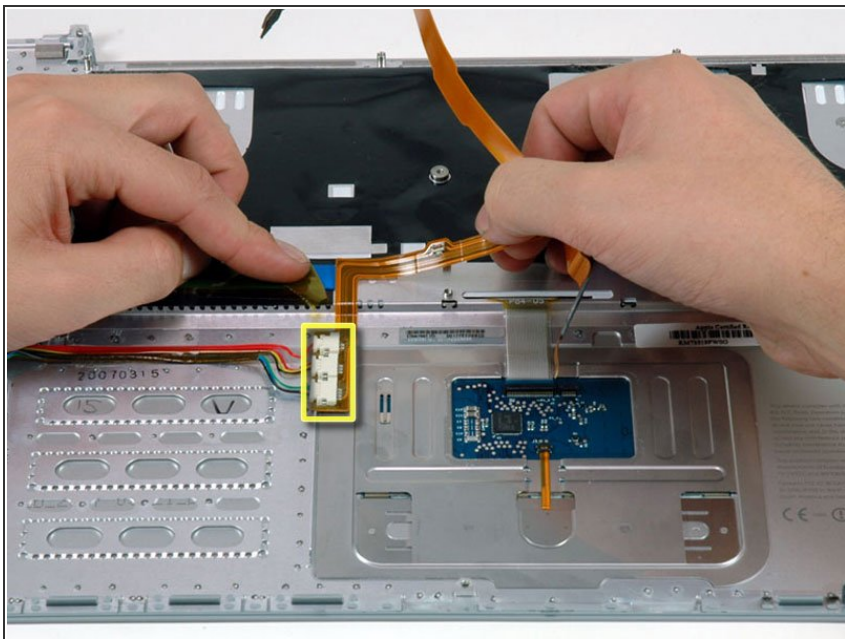
- Use the tip of a spudger to flip up the brown plastic flap locking down the keyboard backlight ribbon cable.

## Step 16



- Use a spudger or your finger to slide the keyboard backlight ribbon out of its connector.

## Step 17



- Disconnect the power button cable, the bluetooth cable, and the sleep sensor cable.
- Carefully peel up the orange ribbon cable removing tape as necessary.

To reassemble your device, follow these instructions in reverse order.