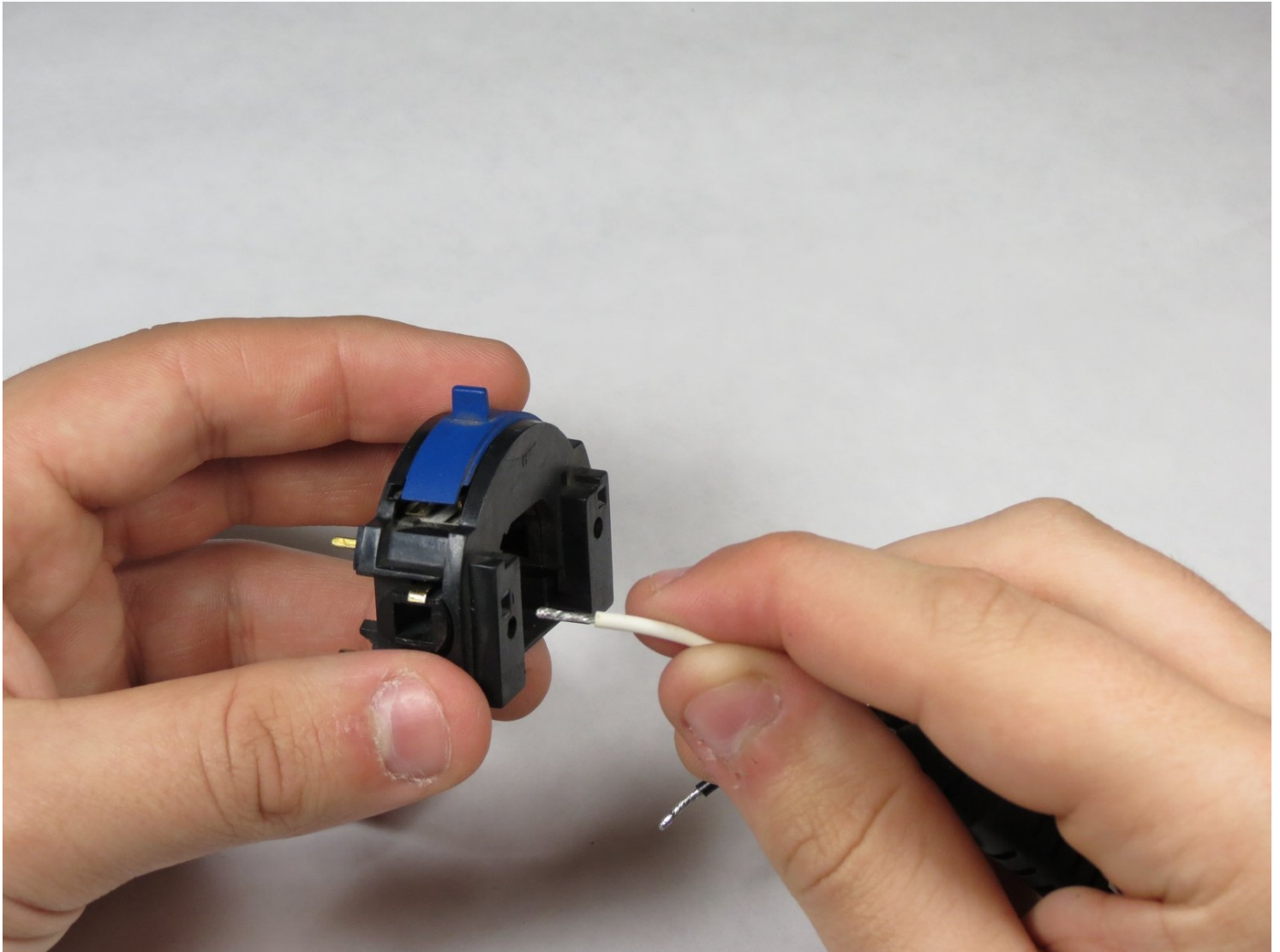




Dremel MultiPro 395 On/Off Switch Replacement

This replacement guide will show how to a...

Written By: jeeyunsun



INTRODUCTION

This replacement guide will show how to a replace a faulty on/off switch on the Dremel MultiPro 395.

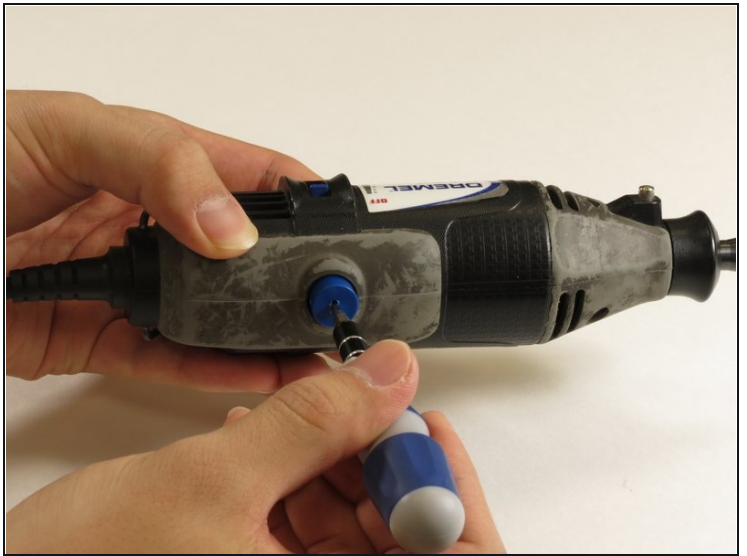
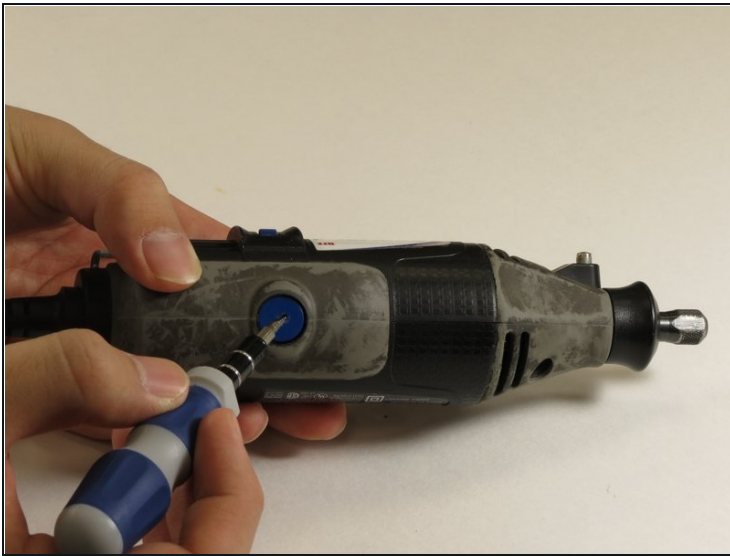
TOOLS:

[3.0mm Flathead Screwdriver](#) (1)
[T15 Torx Screwdriver](#) (1)

PARTS:

[Part Number: 2610912780](#) (1)

Step 1 — On/Off Switch



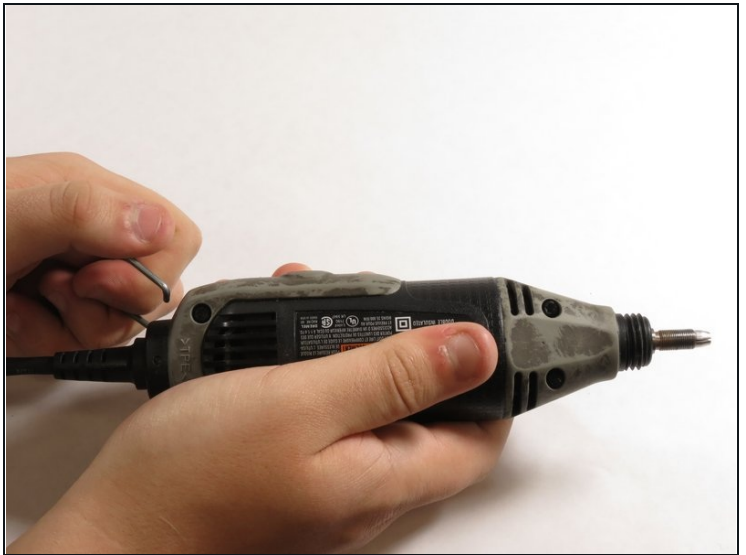
- Remove the blue caps located on either side of the MultiPro, using a [3 mm flathead](#) screwdriver.

Step 2



- Carefully remove the carbon brushes attached at the end of the springs by gently pulling on the springs using your hands.
- Inspect brushes at this time. If they are approaching 1/8" in length, they will need replacement soon.

Step 3



- Pull one side of the hanger up and then pull away from the Multipro until the other side can be pulled out.

Step 4



- Remove the 4 15mm screws located on the bottom of the Multipro with a T-15 screwdriver.

Step 5



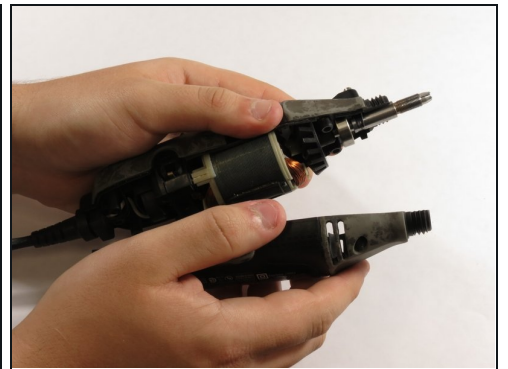
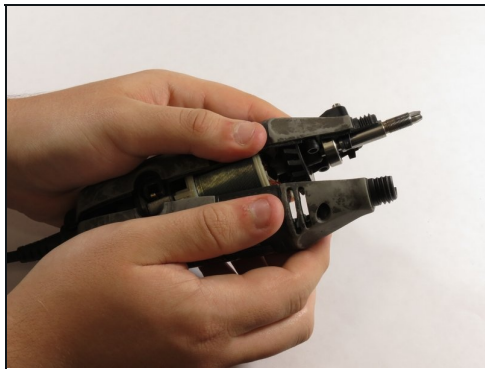
- Hold down the collet lock, remove the chuck cap from the top of the Multipro by screwing counterclockwise.

Step 6



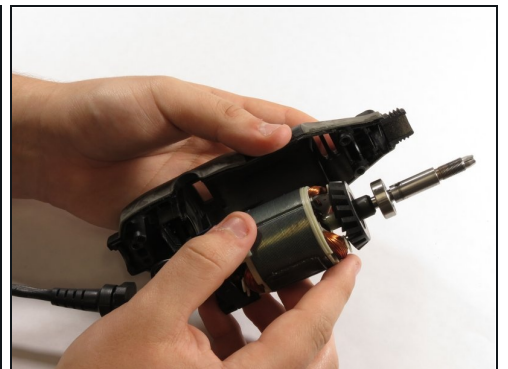
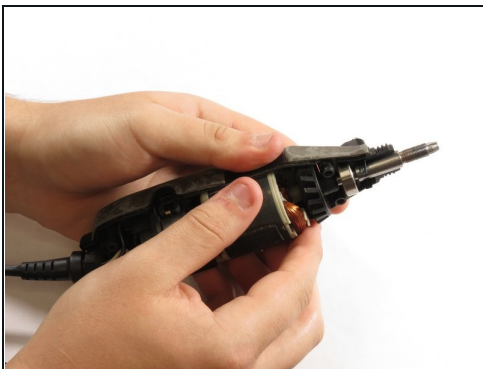
- Remove the black housing cap from the Multipro located directly below the chuck cap.

Step 7



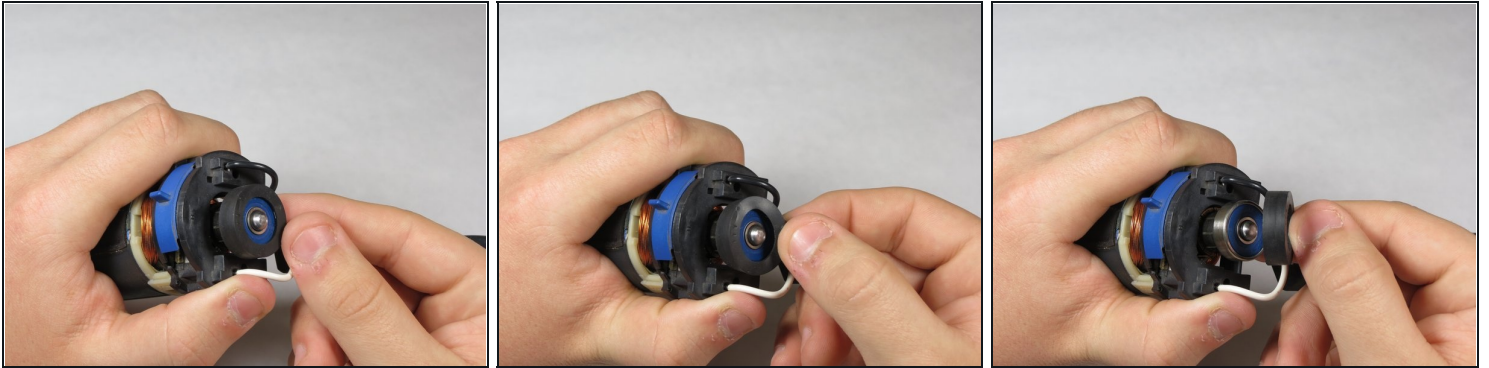
- Pull the bottom side of the casing up to remove it.

Step 8



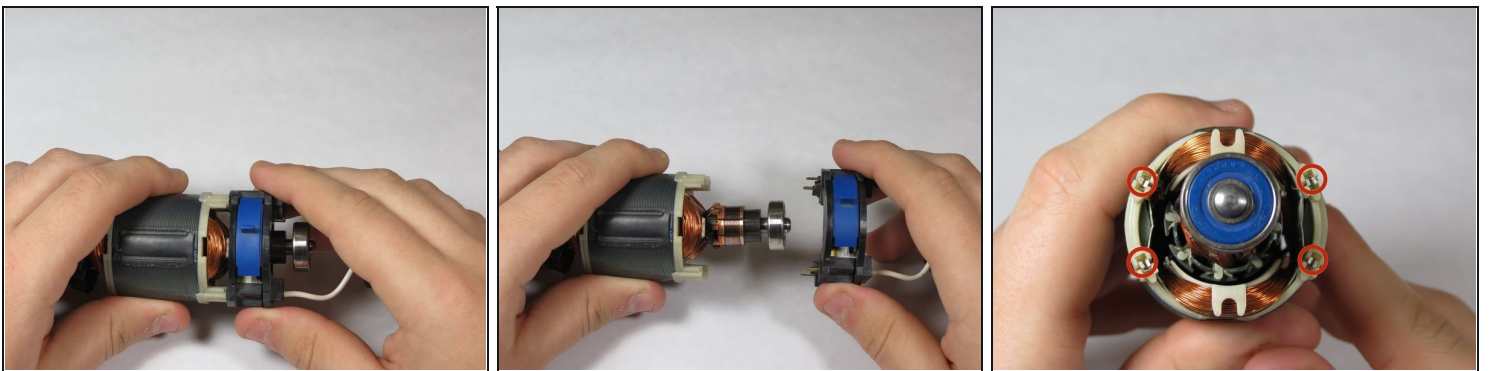
- Gently lift the motor shaft out of the Multipro.

Step 9



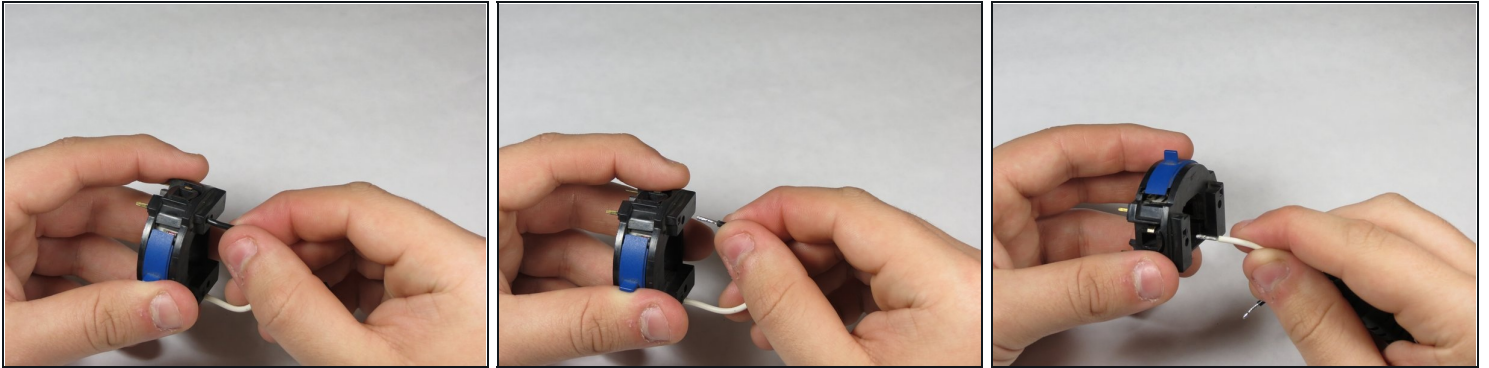
- Remove the rubber ring from the bottom of the armature.

Step 10



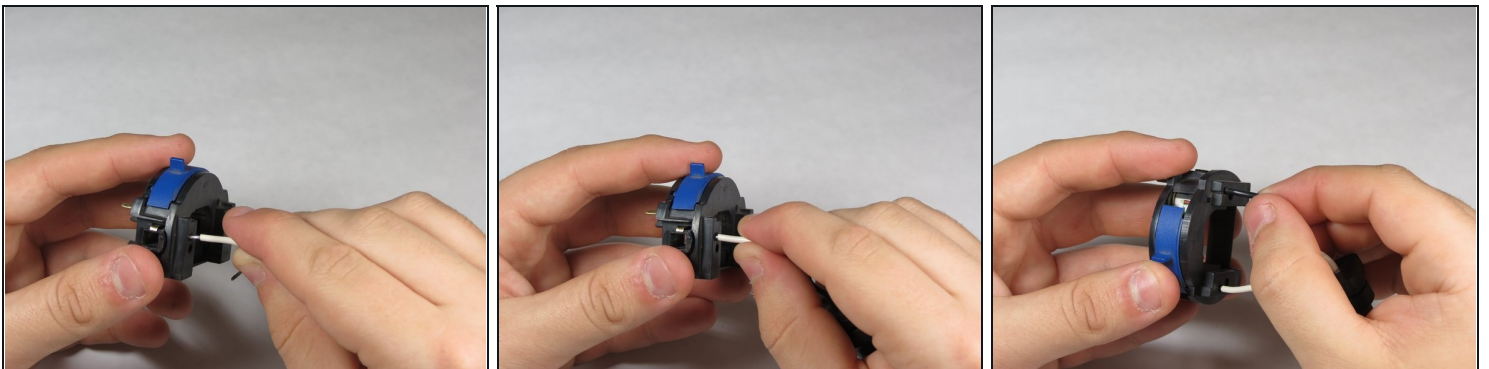
- Pull the on/off switch off of the 120V field, paying careful attention to the prongs on the on/off switch.
- For reassembly, make sure the prongs are touching the metal connectors on the bottom of the 120V field.

Step 11



- Remove the 2 wires on the back of the switch, connecting the cord to the switch, by inserting a small metal pick into the hole next to the wires and pulling the pick and the wire out together.

Step 12



- Carefully insert the wires into the new switch making sure the white wire is attached to left hand side and the black wire is attached to the right hand side when the switch is facing up. By pushing the wires in with your hand.

To reassemble your device, follow these instructions in reverse order.