



Swiffer SweeperVac Battery Replacement (PG3000)

Demonstrates how to replace the short-lived battery in your Swiffer SweeperVac model PG3000.

Written By: Alexander Boesenberg



INTRODUCTION

This guide will show you where to unscrew, how to split the device apart, and then how to disconnect a failing battery from the rest of the interior electronics.



TOOLS:

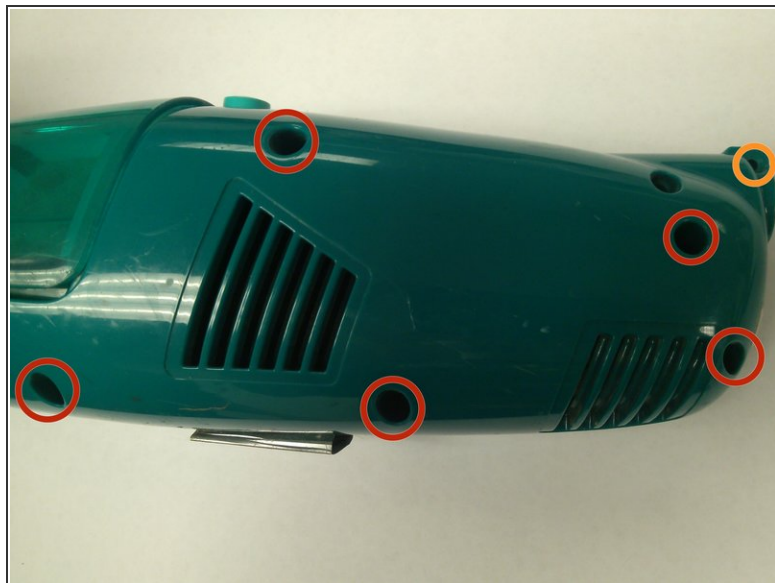
- [Spudger](#) (1)
- [Phillips #1 Screwdriver](#) (1)



PARTS:

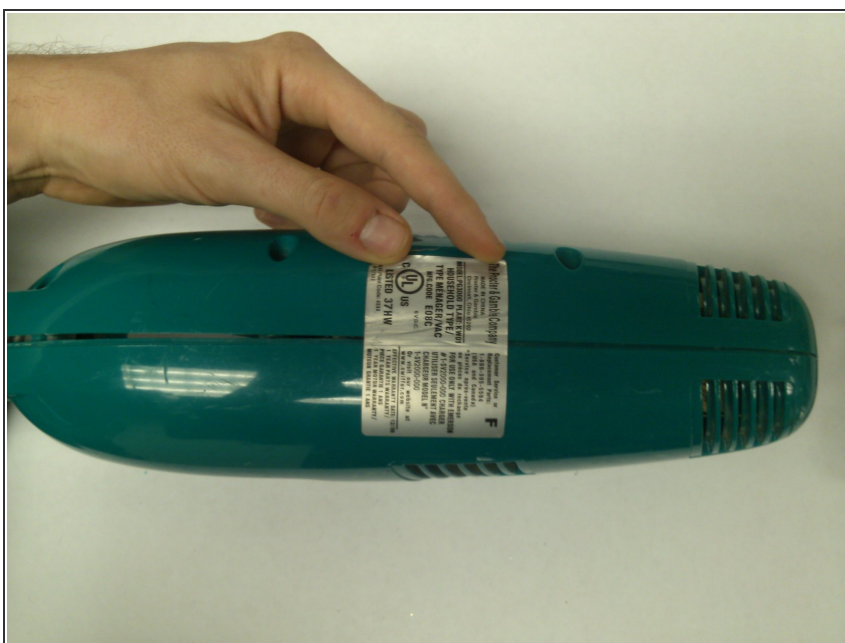
- [5 Cell, 6.0 Volt Battery](#) (1)

Step 1 — Battery



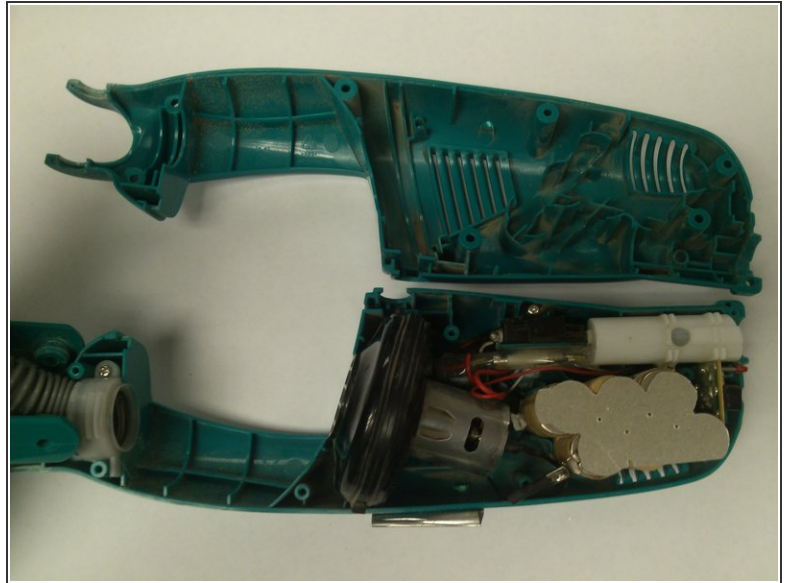
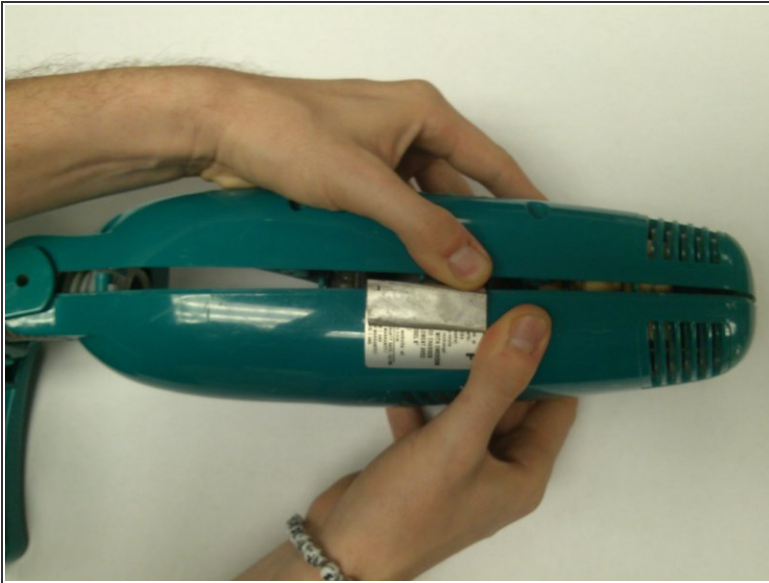
- Unscrew seven 17.95 mm screws on the side of the device.
- Unscrew the 13.87 mm screw.

Step 2



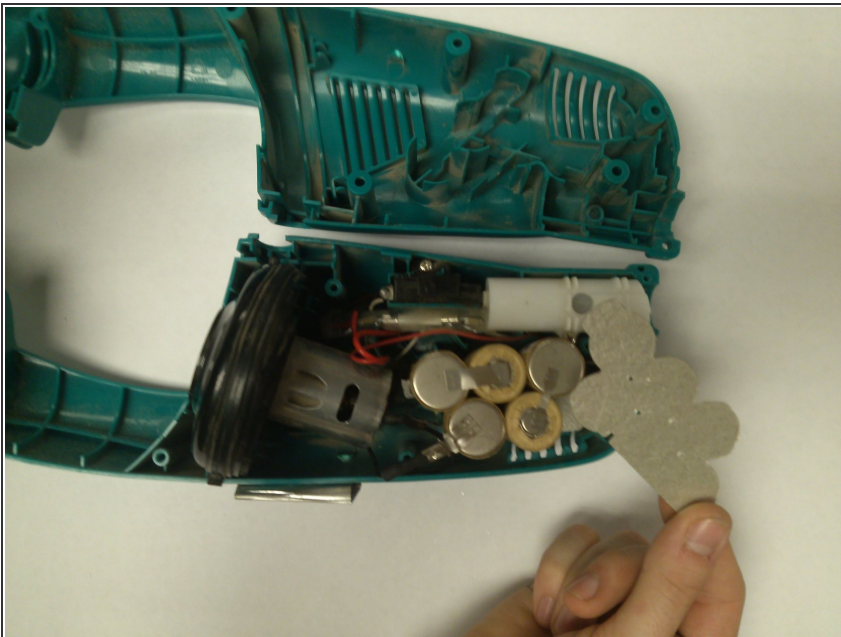
- Find the sticker on the back of the device. It may have already been removed.
- If there is a sticker, peel it back from either half of the device.

Step 3



- Firmly, but carefully grip each half of the case and split it open.

Step 4



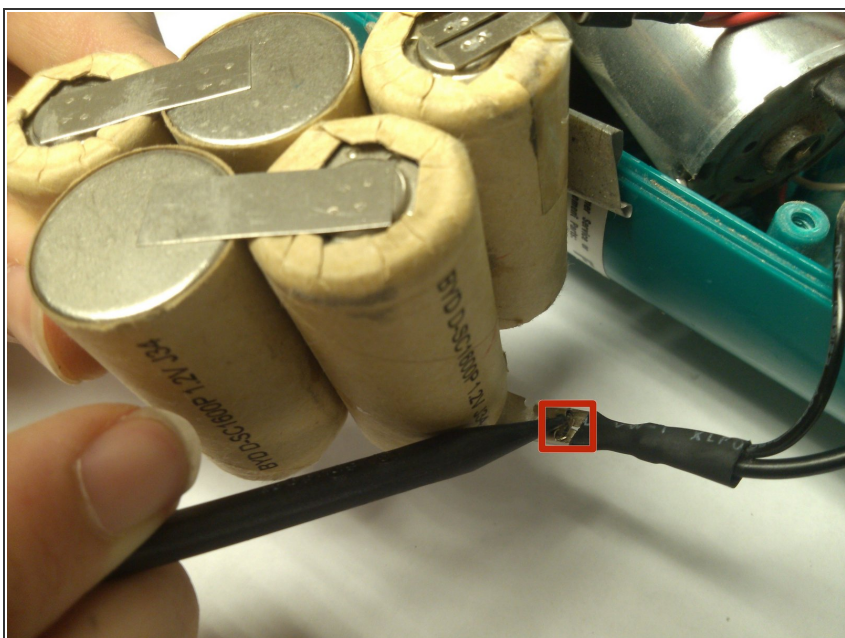
- Remove the silver-colored battery cap from the top of the battery.

Step 5



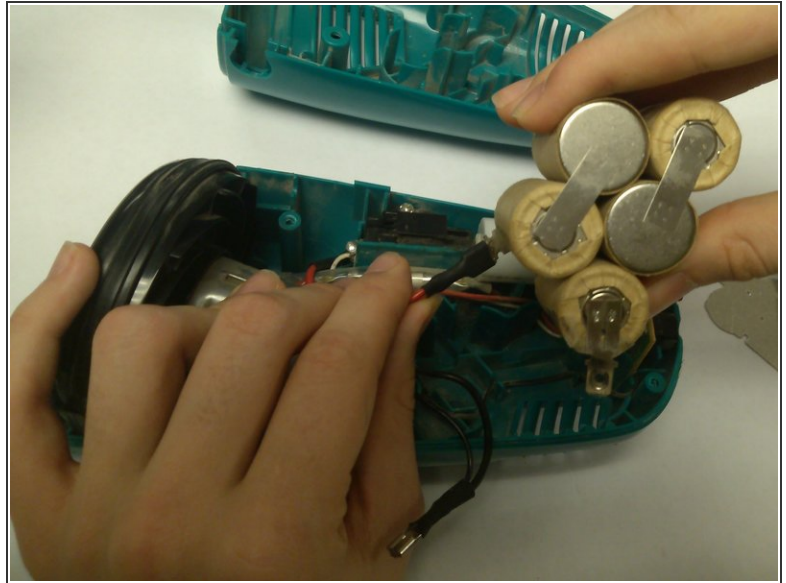
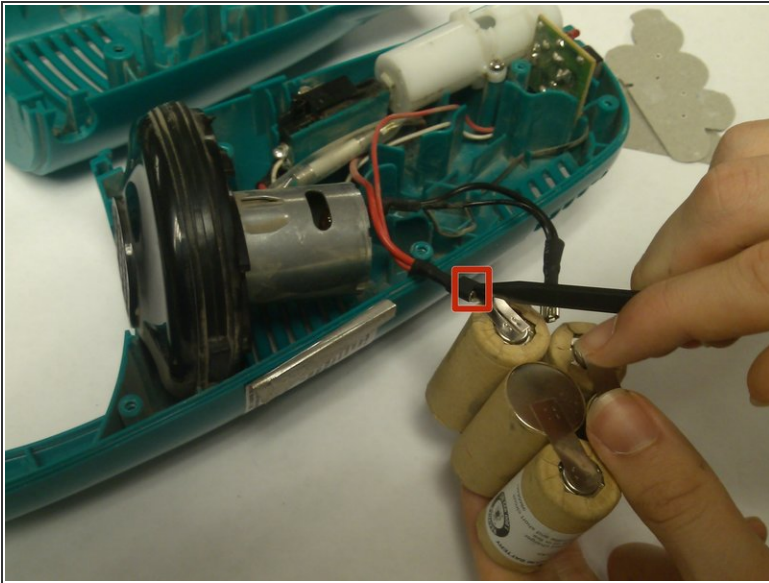
- Lift the attached battery from the device and place it on the surface.
- Remove the second silver-colored battery cap from the bottom of the interior of the device.

Step 6



- Using the spudger, apply pressure to the lock on the black wire attachment.
- While pressure is being applied to the lock, pull the black wire away from the battery.

Step 7



- Using the spudger, apply pressure to the lock on the red wire attachment.
- While pressure is being applied to the lock, pull the red wire away from the battery.
- ☑ When installing the new battery, you do not need to press down on the locks. Simply plug the wires into the appropriate sockets on the new battery.

To reassemble your device, follow these instructions in reverse order.