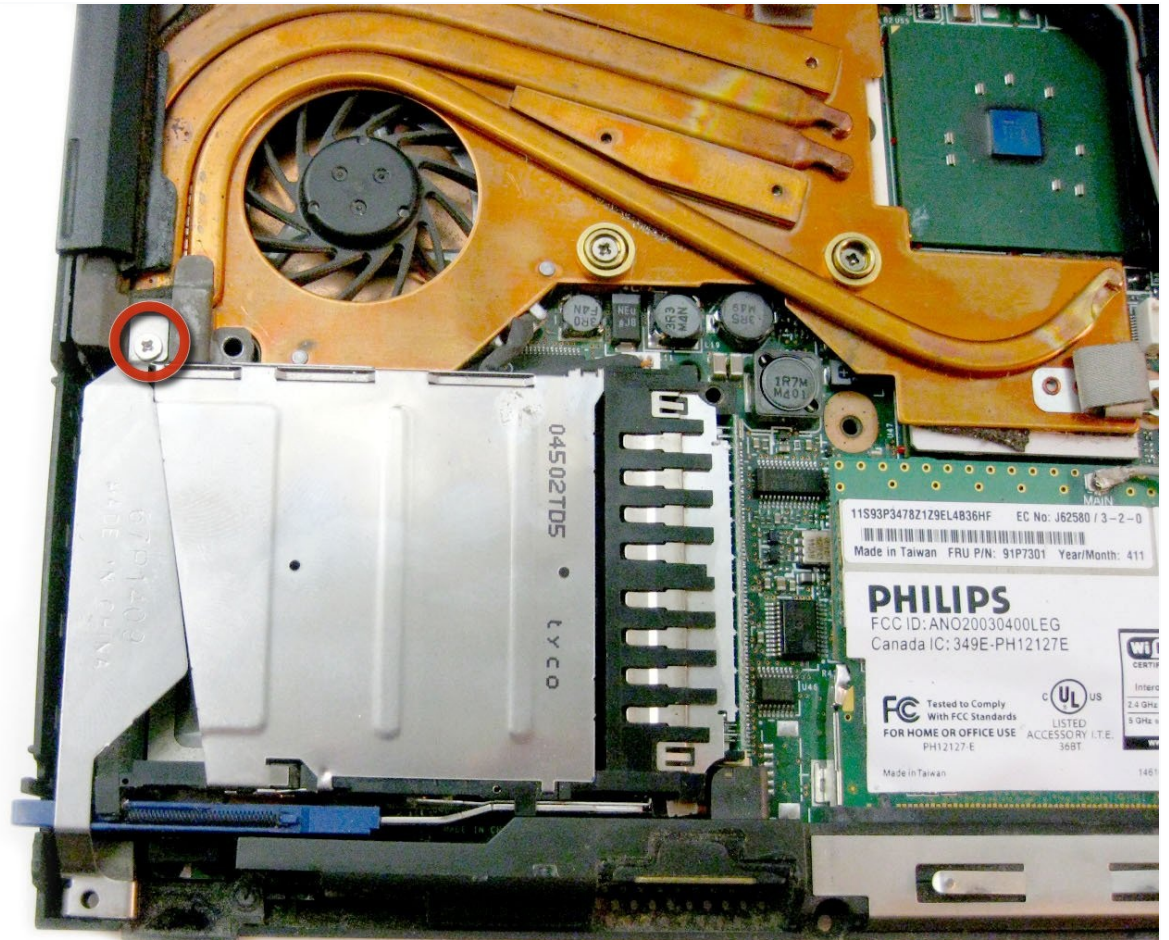




IBM ThinkPad T42 Mini-PCI Port Replacement

The Mini-PCI port can be accessed easily after...

Written By: Gerald Watanabe



INTRODUCTION

The Mini-PCI port can be accessed easily after removing the rear cover

TOOLS:

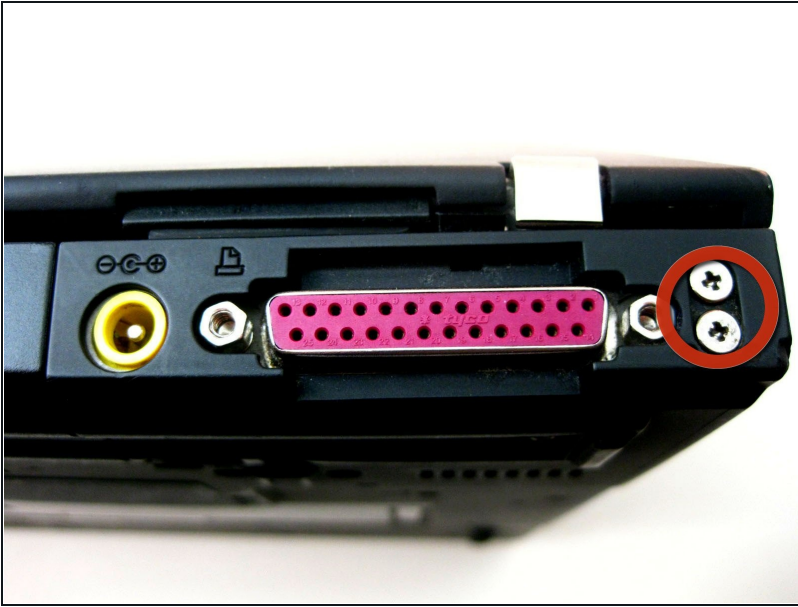
Phillips #0 Screwdriver (1)

Step 1 — Bottom cover



- Using a Phillips #0 screwdriver, identify and unscrew the twenty screws located on the underside of the T42.

Step 2 — Rear screws



- Unscrew the four Phillips screws located on either side of the rear of the T42 (there are two located on each end.)

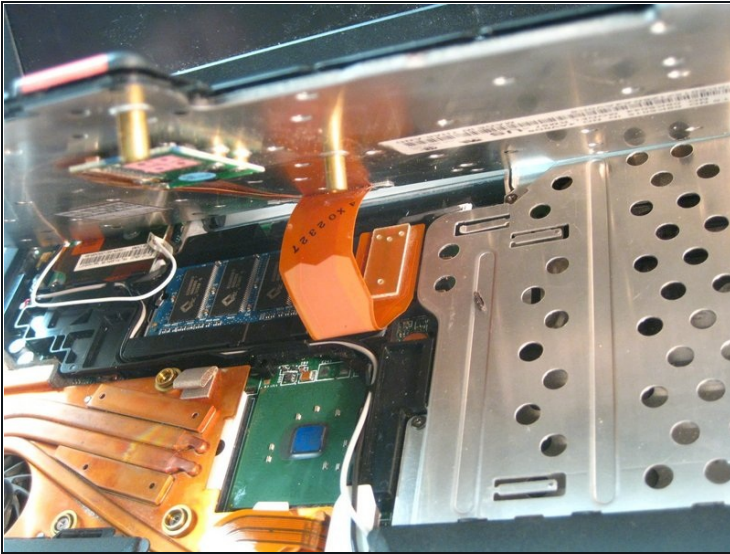
Step 3 — Keyboard and Trackpad



- Flip the laptop over and open the screen to access the keyboard and trackpad.
- ① The keyboard and trackpad are connected to the motherboard. Before removing the keyboard and trackpad, disconnect both components from the motherboard, as shown in the following step.

⚠ The bezel and keyboard will be loose, be careful.

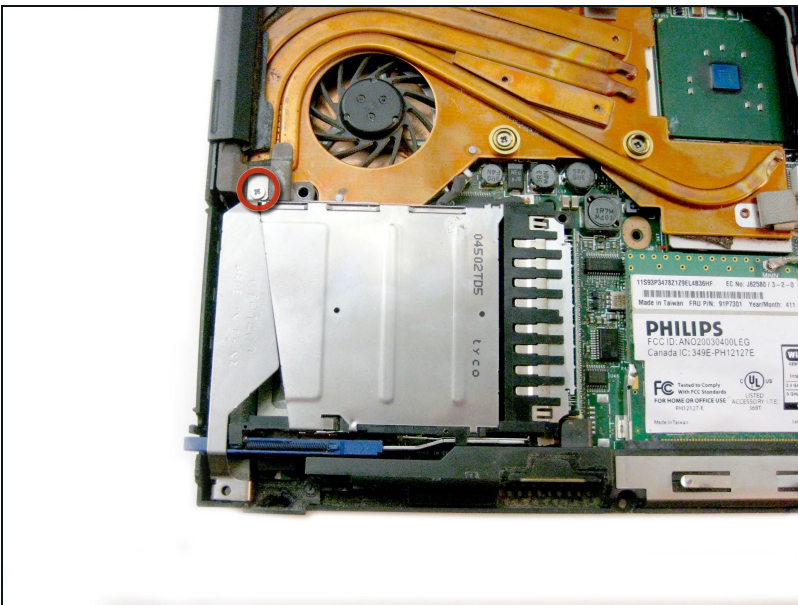
Step 4



- Carefully maneuver the palm rest away from the keyboard, as both the keyboard and palm rest/trackpad will come off together.

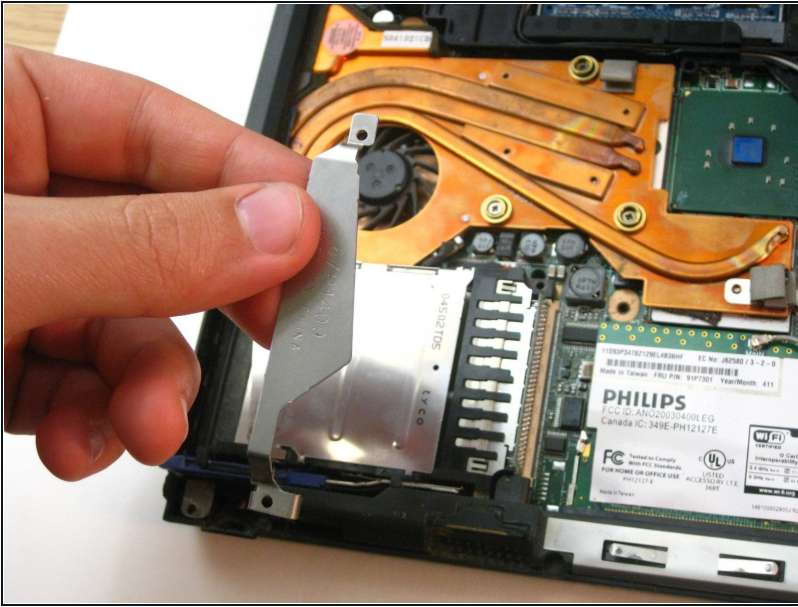
⚠ Remember, both the keyboard and trackpad have connectors to the motherboard. Disconnect these before completely removing either component.

Step 5 — Port Bracket



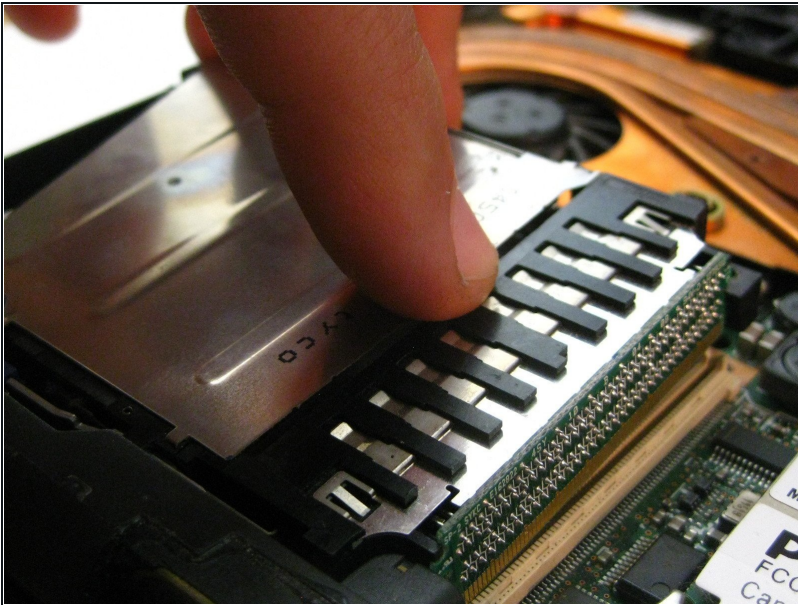
- Remove the screw affixing the bracket down.

Step 6 — Bracket Removal



- Lift the bracket up and out.

Step 7 — Port Removal



- Carefully disconnect it from the motherboard and pull it out of the device.

To reassemble your device, follow these instructions in reverse order.