



# iMac Intel 21.5" EMC 2805 Hard Drive Assembly Replacement

Prereq only for removing the logic board, fan and power supply are out.

Written By: Walter Galan



---

## INTRODUCTION

Prereq only for removing the logic board, fan and power supply are out.

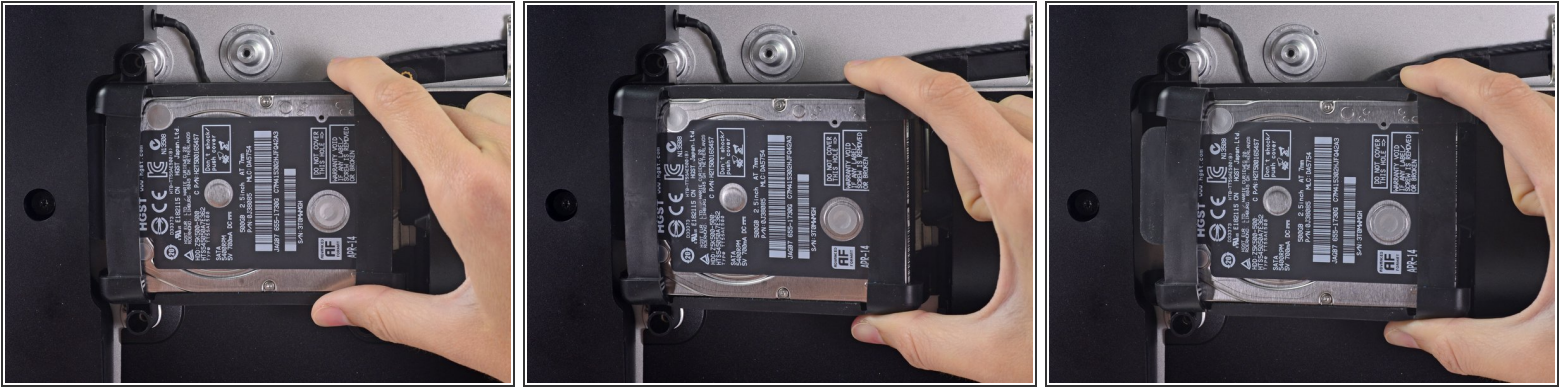


### TOOLS:

- [Spudger](#) (1)
-



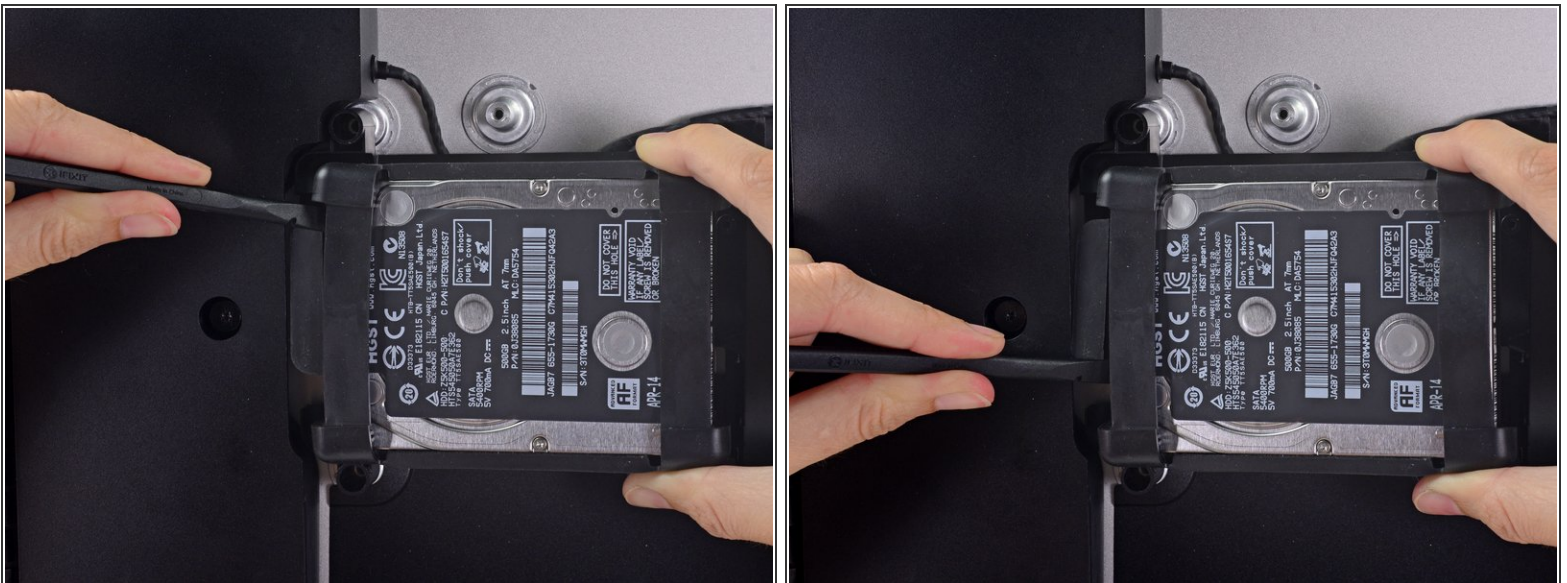
## Step 1 — Hard Drive Assembly



- Lift the hard drive from the edge nearest the logic board and pull it slightly out of its recess.

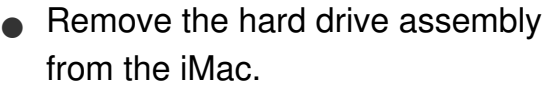
⚠ The hard drive is attached by a single SATA power/data cable—do **not** attempt to fully remove it from the iMac yet.

## Step 2



- Use a spudger to disconnect the single SATA power and data combo cable by gently prying its large plastic connector away from the hard drive.

### Step 3



To reassemble your device, follow these instructions in reverse order.