



MacBook Core Duo Optical Drive Replacement

Written By: iRobot



INTRODUCTION

Access the combo or SuperDrive.



TOOLS:

- [Coin](#) (1)
 - [Phillips #00 Screwdriver](#) (1)
 - [Spudger](#) (1)
-

Step 1 — Battery



- Use a coin or spudger to rotate the battery-locking screw 90 degrees clockwise.

Step 2



- Lift the battery out of the computer.

Step 3 — Memory Cover



- Remove the three evenly-spaced Phillips screws from along the rear wall of the battery compartment.
- ★ The screws are captive to the metal memory cover.
- ★ When replacing the battery casing, use a spudger to re-insert the foam cushioning behind the rear wall for proper battery spacing.

Step 4



- Lift up on L-shaped memory cover, slide it to the right, and lift it out of the computer.

Step 5 — Upper Case



- Remove the following 3 screws:
 - One 11 mm Phillips #00 in the middle of the case.
 - Two 14.5 mm Phillips #00.
- ⓘ If the screws stick in the case, you can use a magnetized screwdriver to draw them out.
- ★ The shorter of the three screws goes in the middle.

Step 6



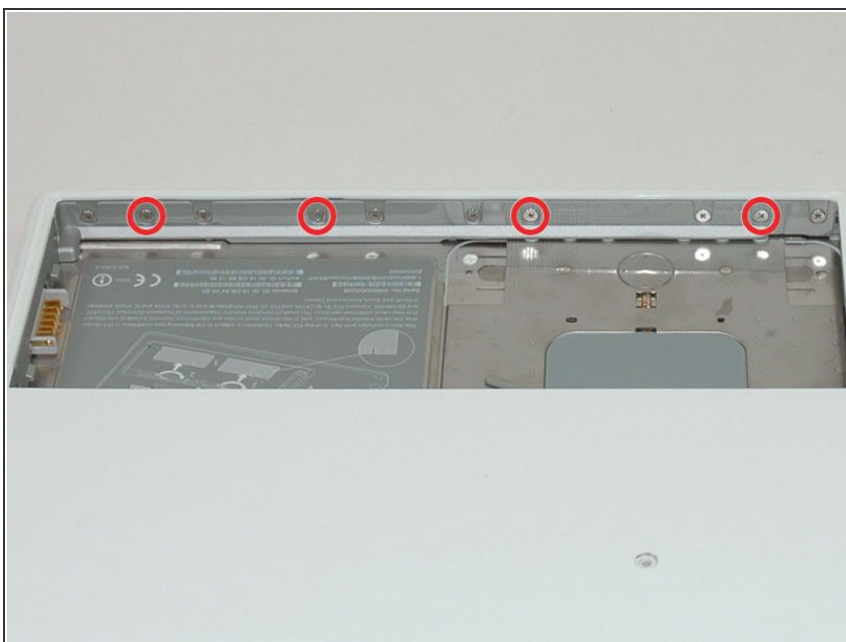
- Remove the following 3 screws from the rear wall of the battery compartment:
 - Two 3 mm Phillips #00. (A1181 has three 3 mm screws and one 4 mm.)
 - One 4 mm Phillips #00 on the right side.
- ★ When reinstalling these screws, press gently on the lower case to line up the screw holes.
- ⓘ These screws easily strip, so be careful while taking these particular screws out.

Step 7



- Remove the two 6 mm Phillips #00 screws from either side of the right wall of the battery compartment (not the ones closest to the battery connector).

Step 8



- Remove the four 3 mm indicated Phillips #00 screws from the front wall of the battery compartment. When working from the left, remove the 2nd, 4th, 7th and 9th screw.

Step 9



- Remove the following 4 screws from the back of the computer:
 - Two 7 mm shouldered Phillips on the far sides.
 - Two 10.5 mm Phillips toward the center.
- ⓘ Do not over-tighten these; you can cause the case to distort.

Step 10



- Remove the two 5.2 mm shouldered Phillips #00 screws from the optical side of the computer.
- ⓘ It is not necessary to remove the similar screws on the other side of the computer.

Step 11

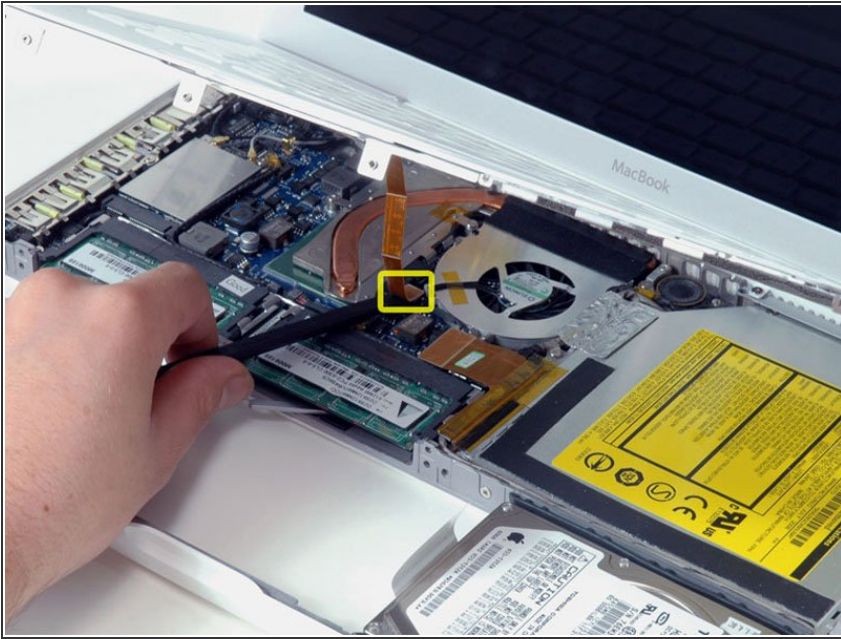


- Starting near the display and working around to the front of the computer, pry up on the upper case. It is held with clips on the right above the optical drive. These will release with some firm lifting pressure.
- Be careful when prying up the upper case. It's very easy to slice open a fingertip and thus provide the blood sacrifice the Mac gods sometimes require of those who insist on doing their own repairs.

⚠ There's a trackpad and keyboard ribbon connecting the upper case to the logic board, so don't pull the upper case off entirely just yet.

ⓘ If you have trouble getting the clips to release, be careful that you are not prying the plastic top of the upper case away from its metal frame.

Step 12



- While holding up the upper case (from the bottom or the top), use a spudger to pry up the orange trackpad and keyboard cable from its connector.
- ⓘ Take care to pry between the black socket and the white connector. You might have to pry on both sides for it to release properly.
- ⚠ Do not pry from the bottom or the top, but from the sides.
- ⓘ If you happen to break your upper case cable when removing the upper case, we stock the [cable](#) individually and we have a [guide](#) that makes replacing it easy.

Step 13 — Optical Drive



- Grasp the white plastic tab attached to the hard drive and pull it to the left, removing the hard drive from the computer.

Step 14



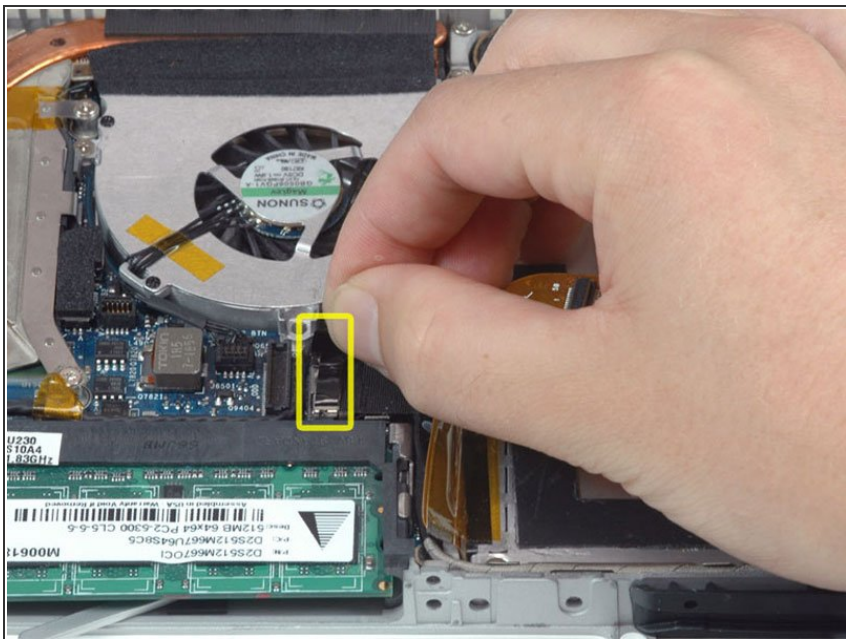
- Remove the two Phillips screws from the front edge of the optical drive.
- ⓘ The shorter screw (3 mm) is recessed nearest the RAM modules. The other is 3.5 mm.

Step 15



- Disconnect the orange optical drive ribbon cable from the logic board.

Step 16



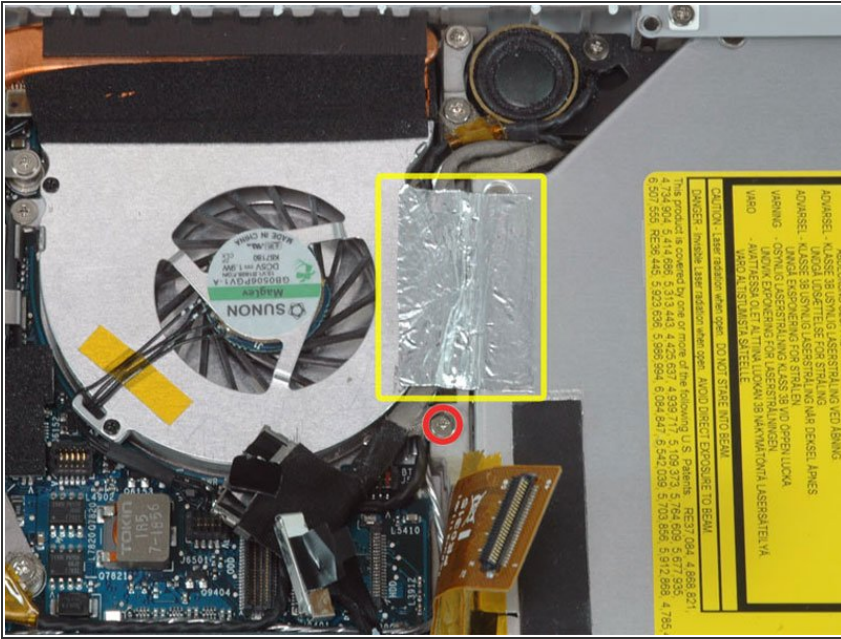
- Disconnect the newly-revealed display data cable. If there is no pull-tab on the top of the connector, it may be helpful to use a spudger to disconnect this connector.

Step 17



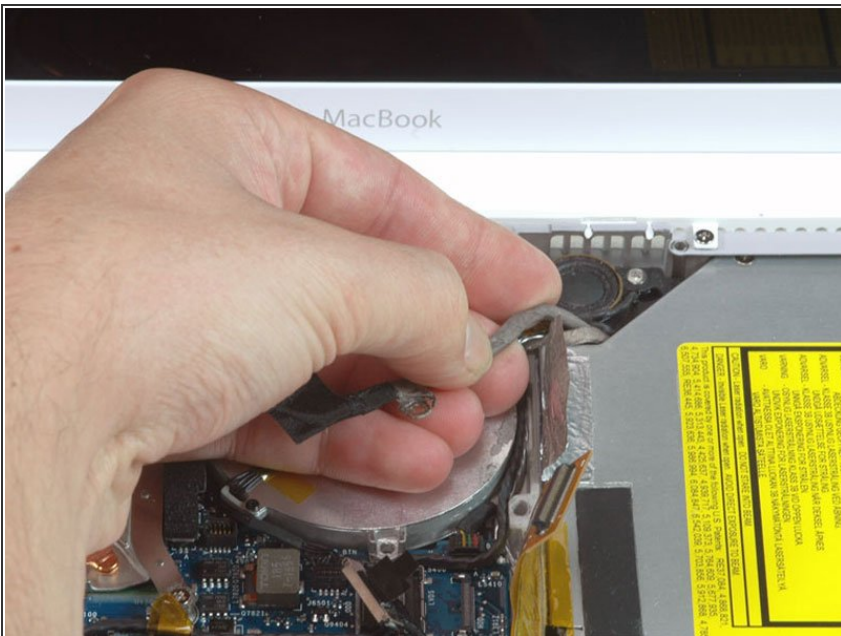
- Disconnect the (once again) newly-revealed hard drive cable.

Step 18



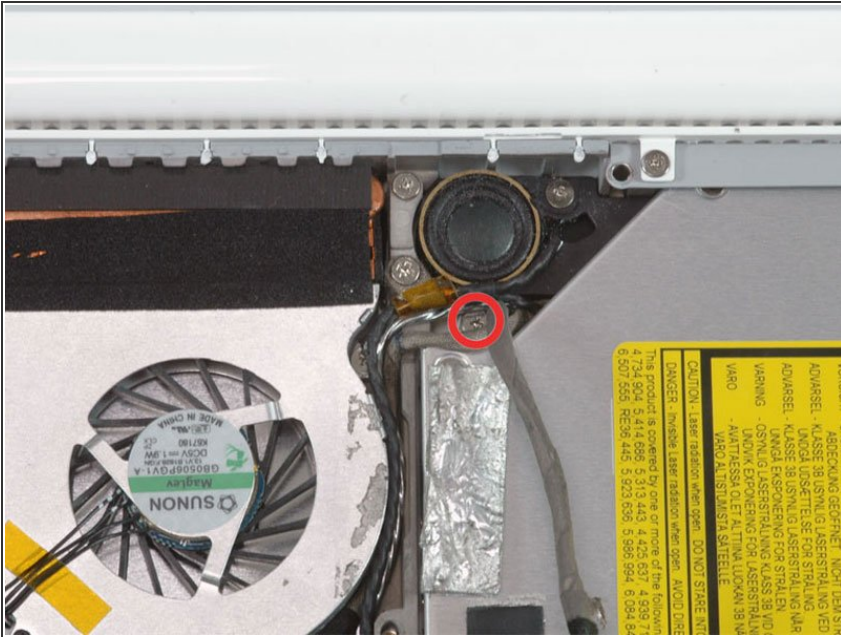
- Peel up the foil tape between the fan and the optical drive.
- Remove the 8.5 mm Phillips screw securing the display data cable to the metal framework.

Step 19



- Pull up the display data cable from along the edge of the optical drive to reveal a silver Phillips screw.

Step 20



- Remove the 2.8 mm Phillips screw securing the optical drive.
- ⓘ The Bluetooth cable may be covering the screw; carefully push it aside before removing the screw.
- ✦ Do not over-tighten this screw when re-mounting. You could break the plastic enclosure.
- After removing the screw, push the metal tab backwards, towards the fan, to release the front of the optical drive.

Step 21



- Lift the Bluetooth antenna board from the right side of the optical drive.

Step 22



- Deroute the hard drive cable from along the front of the optical drive.

Step 23



- Lift the front edge of the optical drive and slide it up and out of the computer.

To reassemble your device, follow these instructions in reverse order.