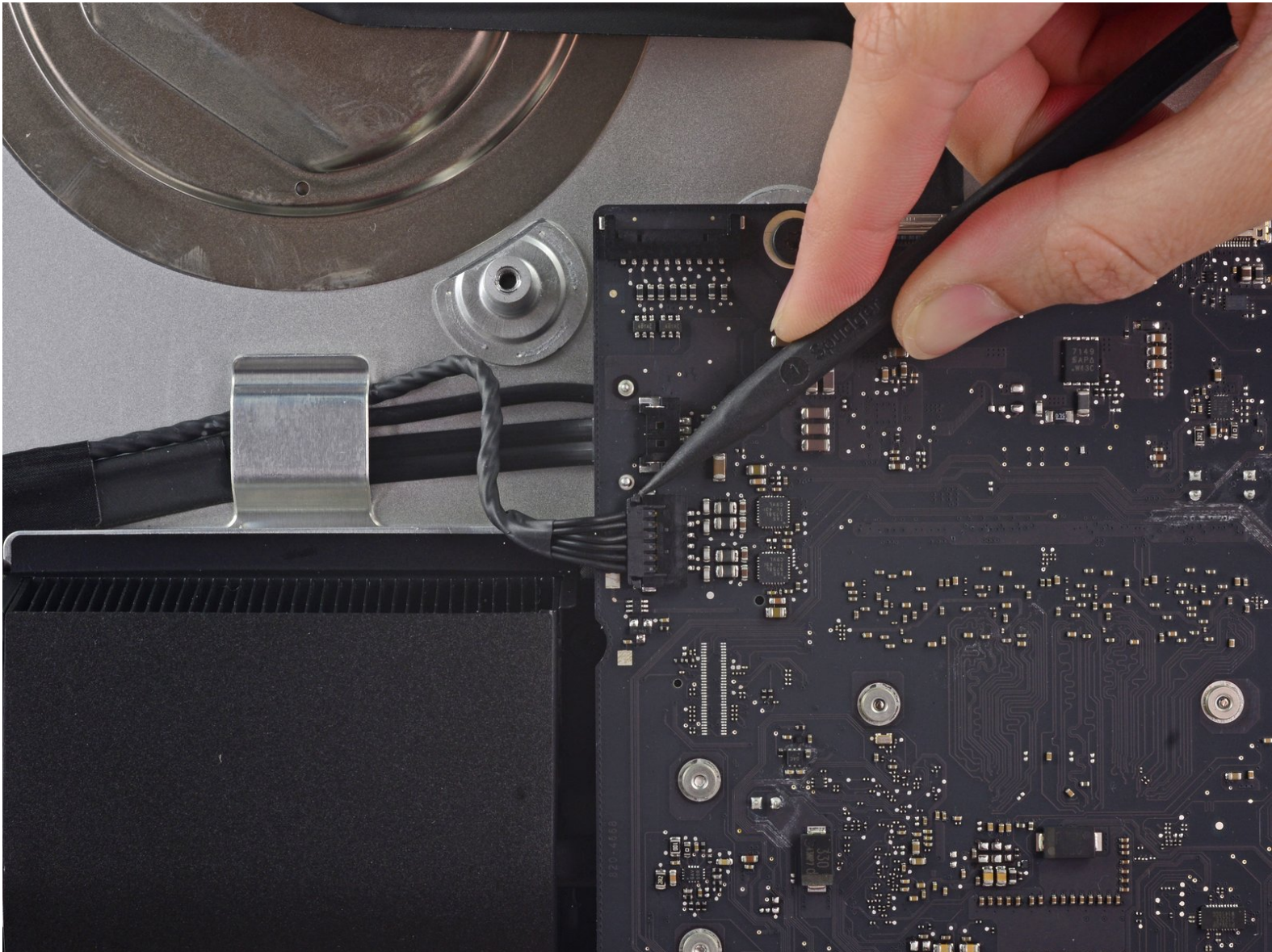




iMac Intel 21.5" EMC 2805 Logic Board Assembly Replacement

Prereq for removing logic board.

Written By: Walter Galan



INTRODUCTION

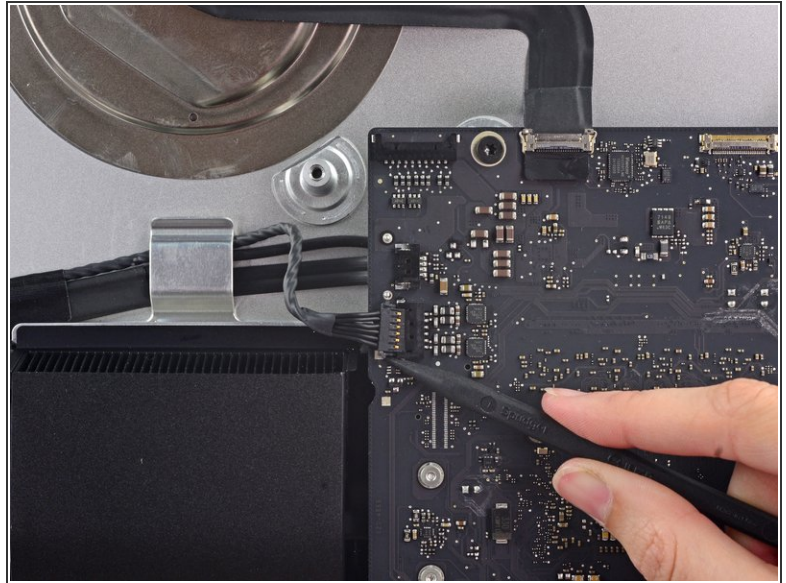
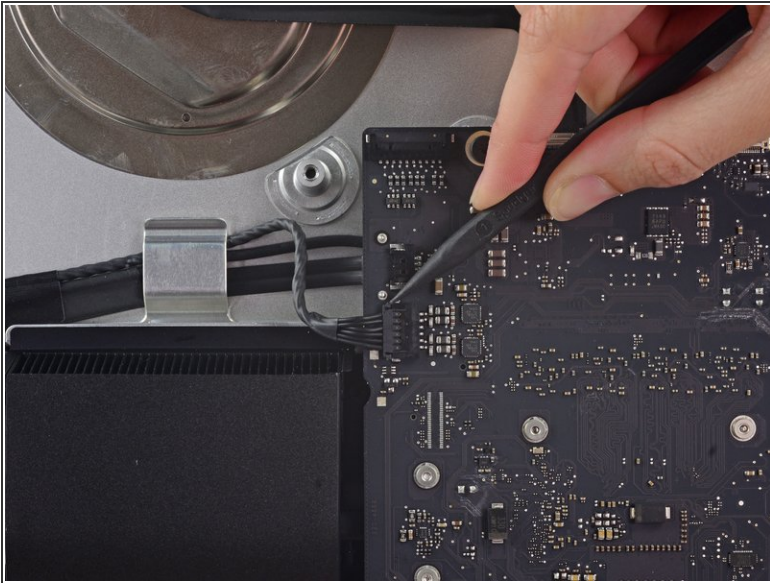
Prereq for removing logic board.



TOOLS:

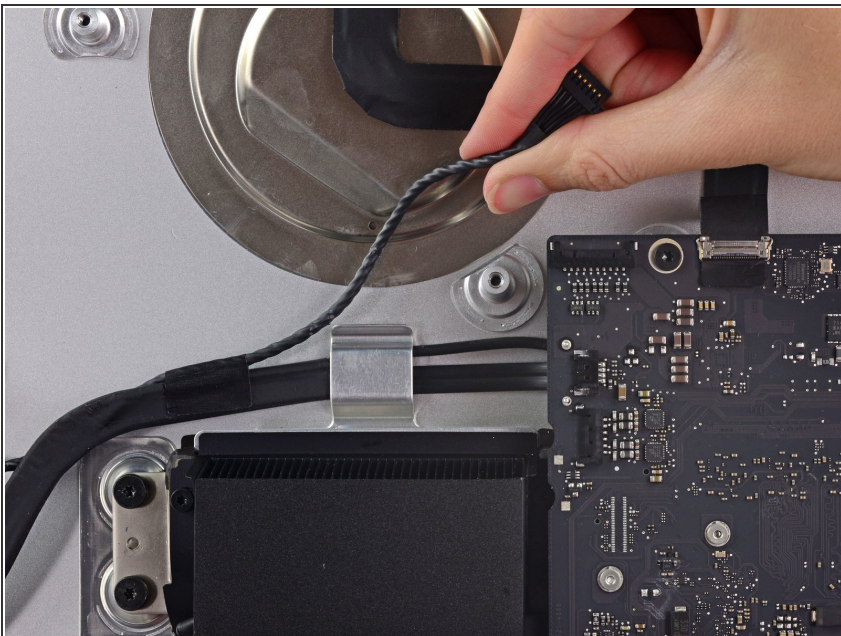
- [Spudger](#) (1)
 - [Tweezers](#) (1)
 - [T8 Torx Screwdriver](#) (1)
 - [T10 Torx Screwdriver](#) (1)
-

Step 1 — Logic Board Assembly



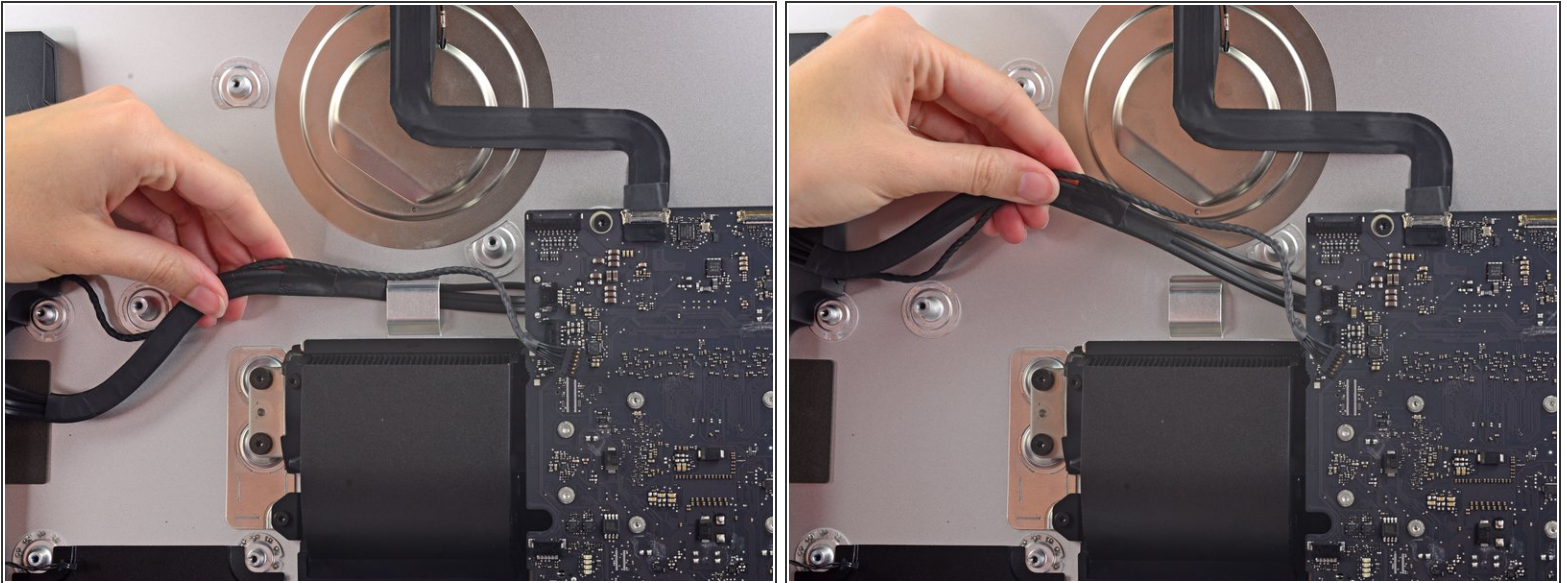
- Use the tip of a spudger to *walk* the left speaker cable connector out of its socket.
- ⓘ It is recommended to first press on one side of the connector, then press on the other side until freed.

Step 2



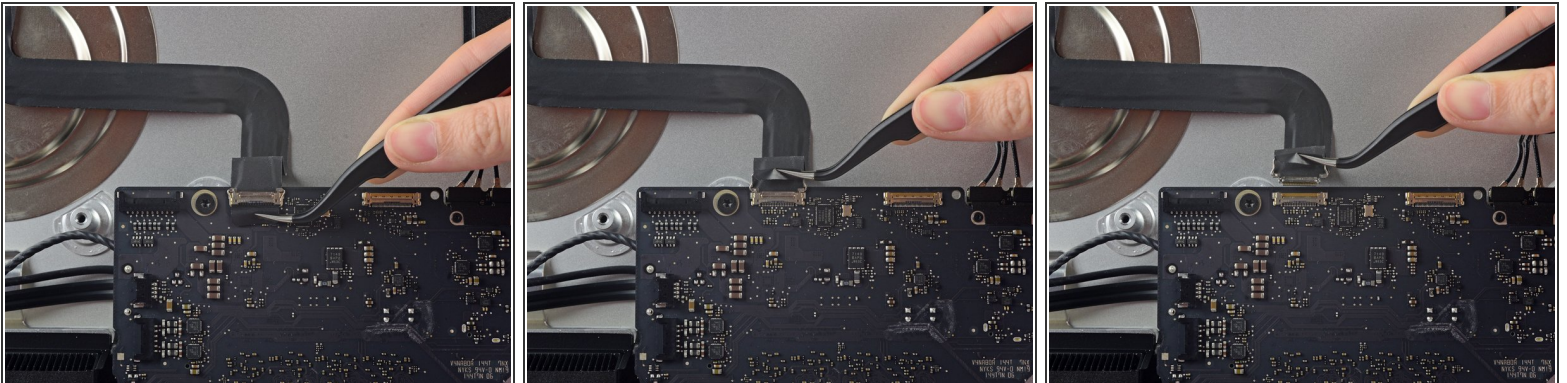
- De-route the left speaker cable by pulling it straight up out of the retaining clip in the back of the rear enclosure.

Step 3



- In a similar fashion as the previous step, de-route the combo SATA data/power cable up out of the retaining clip.

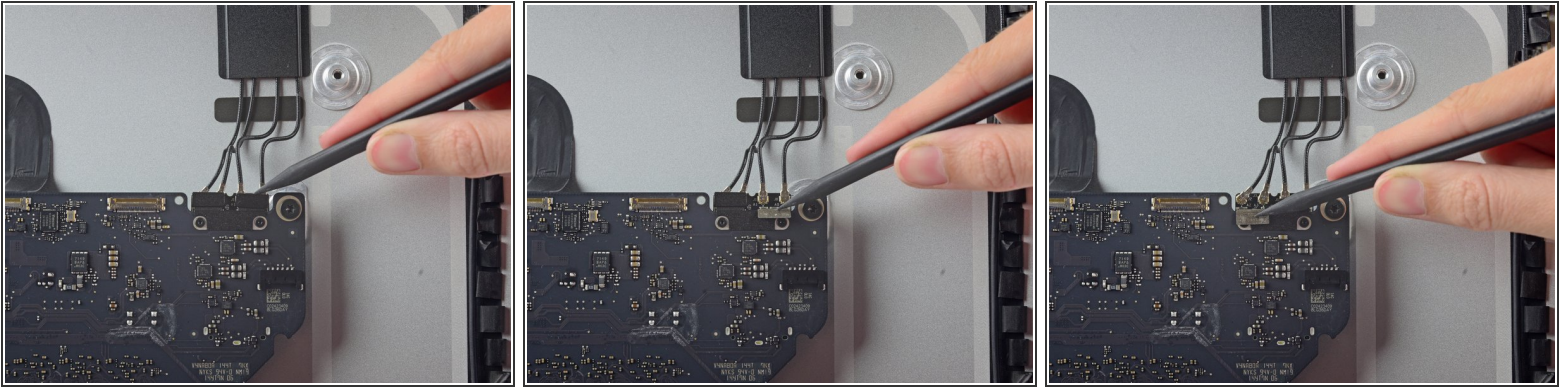
Step 4




- Use a pair of tweezers to flip up the metal retaining bracket on the iSight camera cable connector.
- Pull the iSight camera cable straight out of its socket on the logic board.

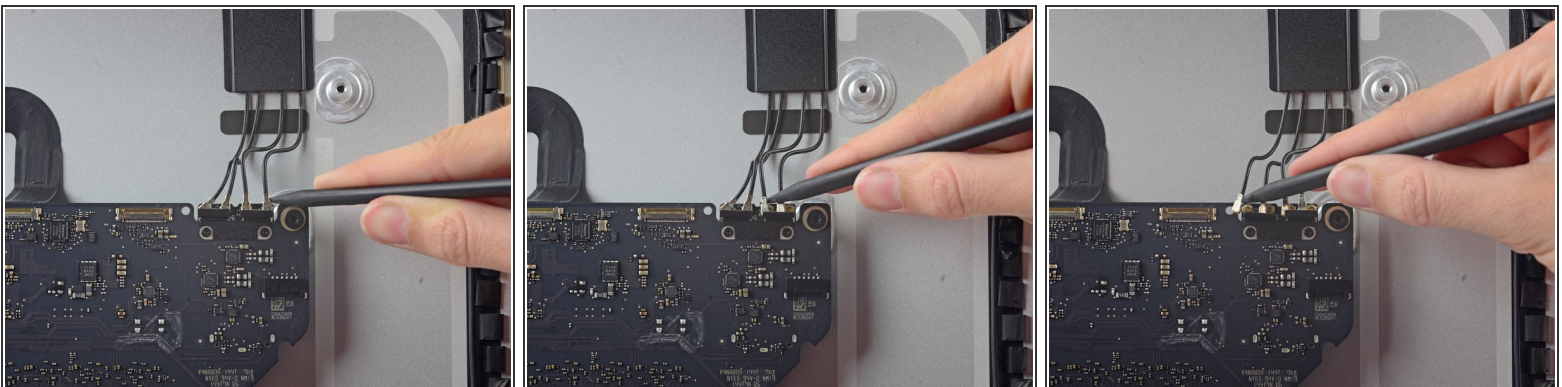
 **This is a delicate connector that can be easily damaged.**


Step 5



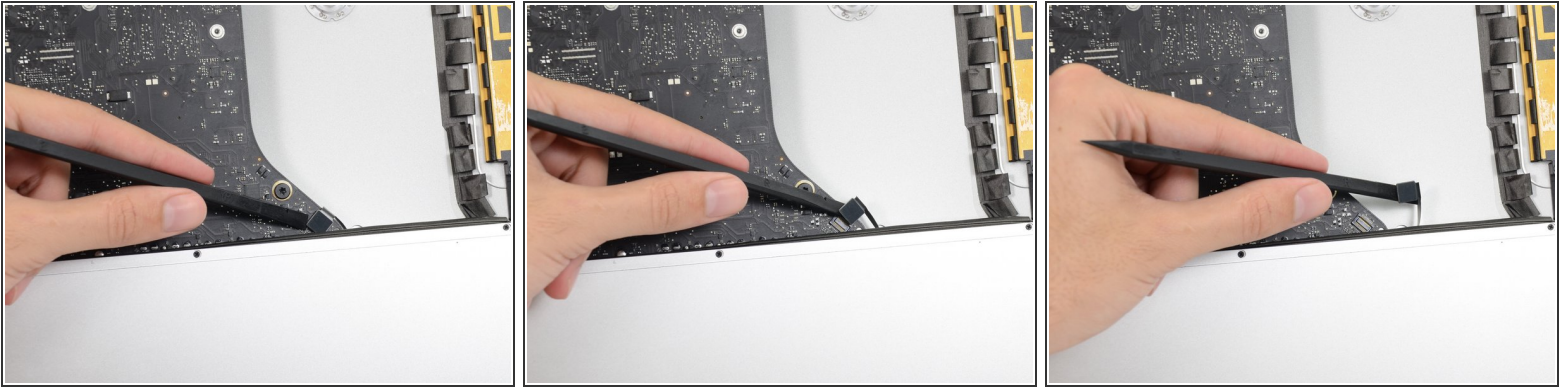
-  If necessary, use the tip of a spudger to peel back the tabs covering the antenna connectors.

Step 6




- Use the tip of a spudger to disconnect each of the four antenna connectors from the AirPort/Bluetooth card.
-  Note the original positions for each connector when reconnecting the cables.

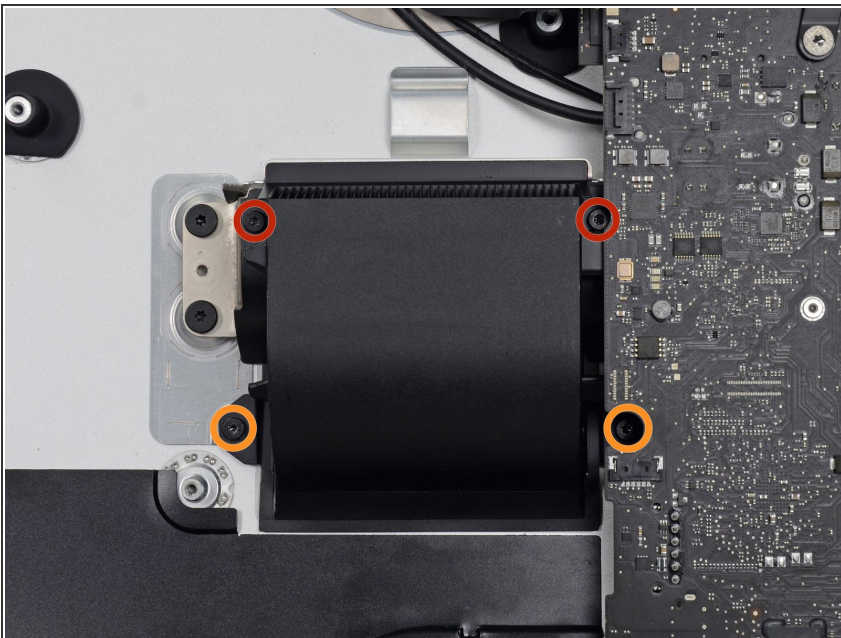
Step 7



- Use the flat edge of a spudger to pry the headphone jack cable connector from its socket on the logic board.

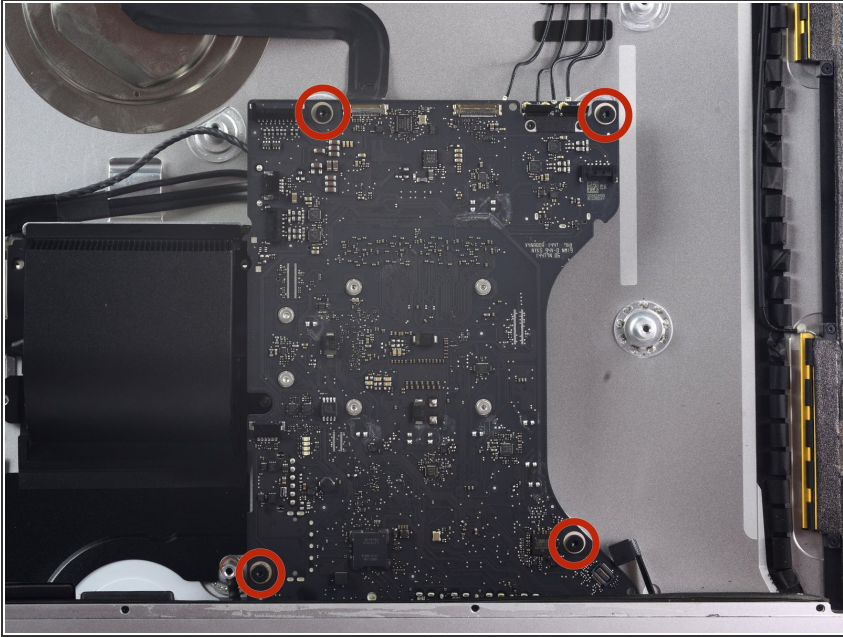
 Push the cable slightly to the right.

Step 8



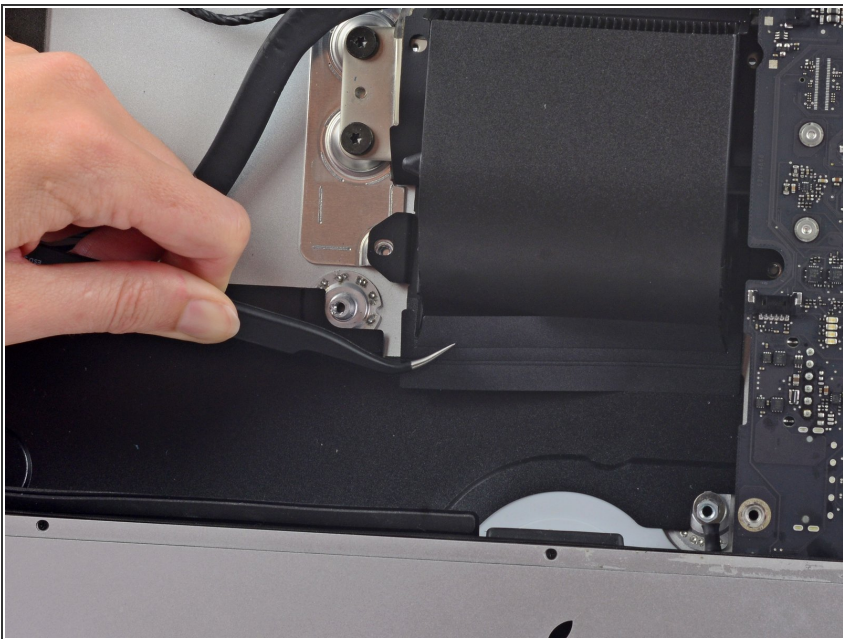
- Remove the following screws securing the exhaust duct to the rear enclosure:
 - Two 6.3 mm T8 screws
 - Two 4.7 mm T8 screws

Step 9



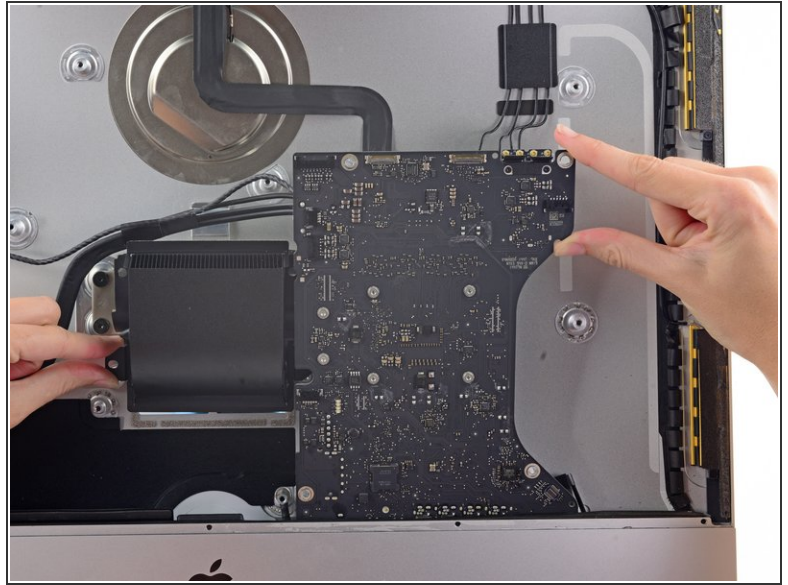
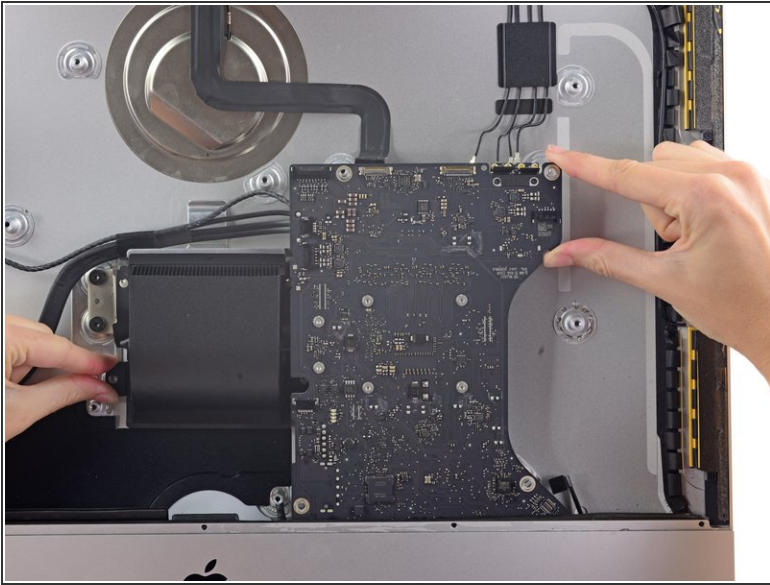
- Remove the four 7.2 mm T10 screws securing the logic board to the rear enclosure.

Step 10



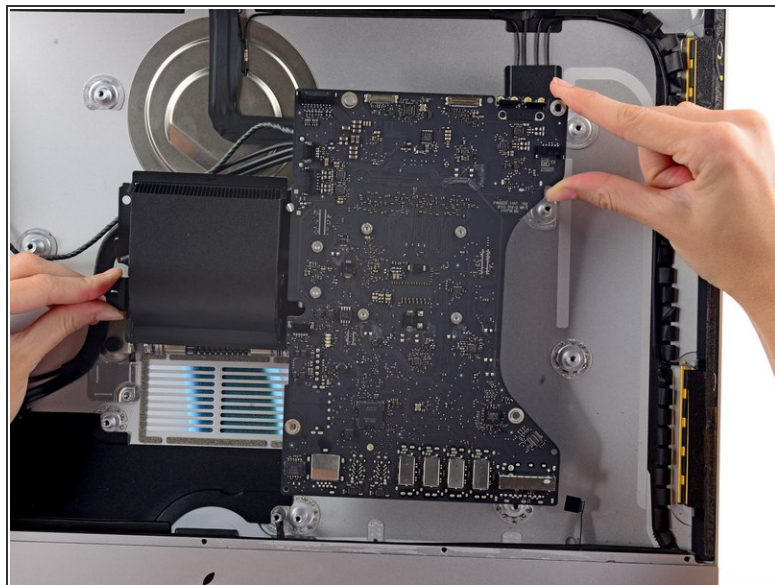
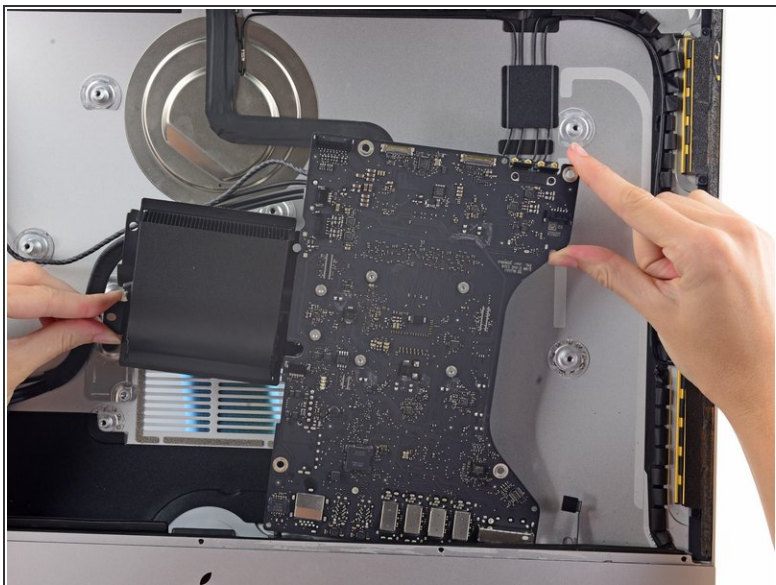
- Use a pair of tweezers to peel the tape covering the exhaust duct.

Step 11



- Tilt the top of the logic board away from the rear enclosure.

Step 12

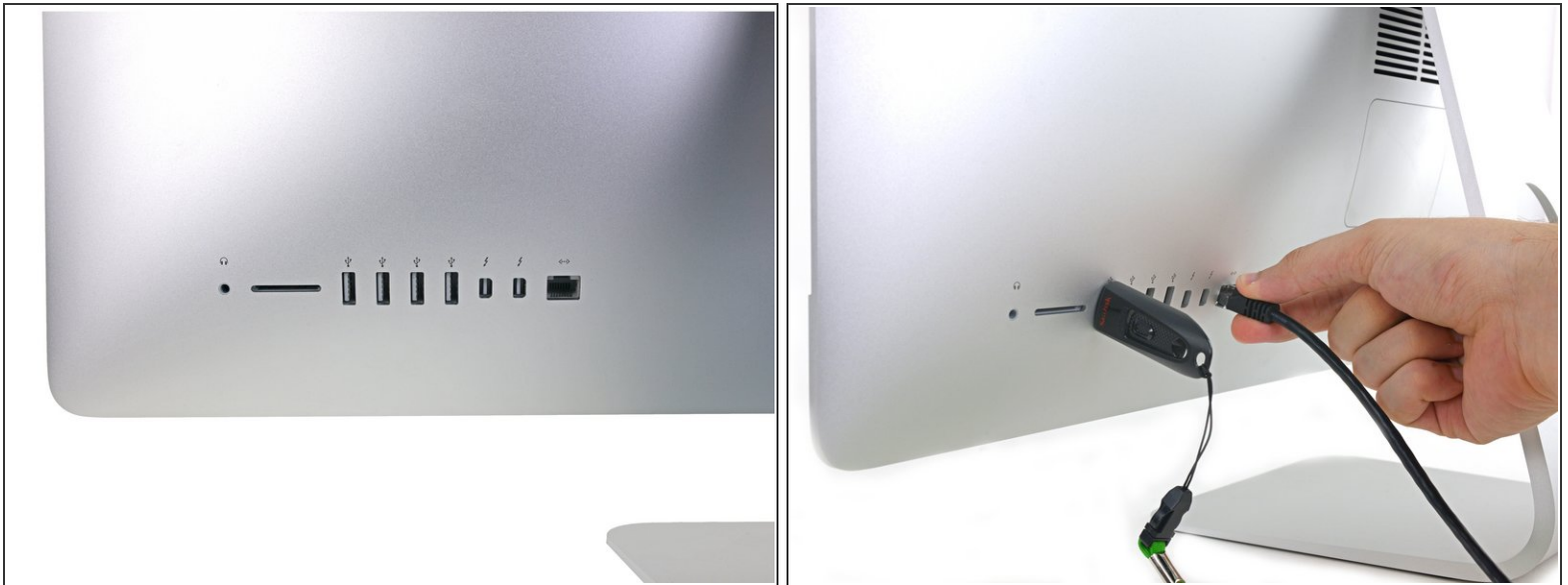


- Lift the logic board straight up and out of the iMac.

⚠ Be careful not to snag the board on any of the rear case's screw posts.

ⓘ The I/O inputs at the bottom of the logic board will be the greatest challenge. It is recommended to pull gently to avoid any damage.

Step 13



- ✦ When reinstalling the logic board, check the alignment of the exterior I/O ports. The logic board can sit crooked even when secured with all its screws.
 - Use a USB flash drive and/or ethernet cable to keep the logic board aligned while you screw it in.

To reassemble your device, follow these instructions in reverse order.