



# How to fix the PSP E1000 psp e1000 WHITE SCREEN

Repairing PSP E1000 psp e1000 - WHITE SCREEN

Written By: ZFix



---

## INTRODUCTION

Full video:

This process requires a rework station.

[video: <https://www.youtube.com/watch?v=ILYbv2DBako>]

This is common problem with PSP E1000 caused by [bad solder joints](#). This can be fixed with a bit of preheating.



### TOOLS:

- [Pro Tech Toolkit](#) (1)

## Step 1 — How to fix the PSP E1000 psp e1000 WHITE SCREEN



- Let's start dismantling.

## Step 2



- start by removing the top part and then \*gently\* "fold" it down to the bottom

## Step 3



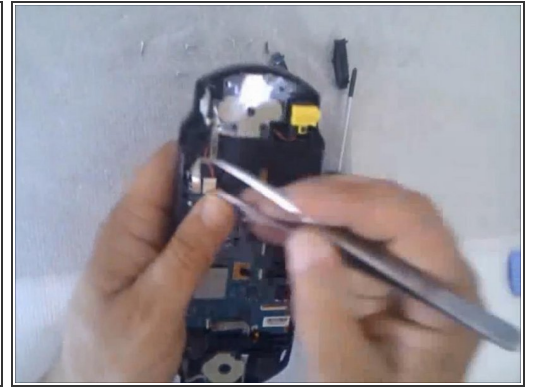
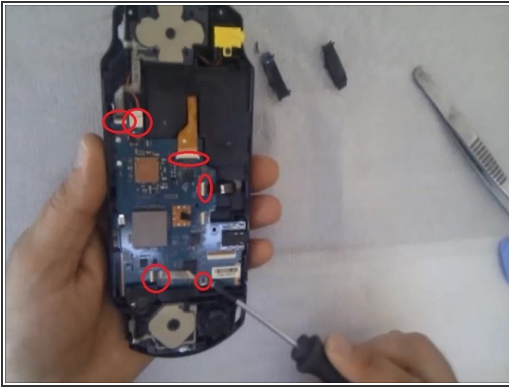
- **Disassembling the screen.**

## Step 4



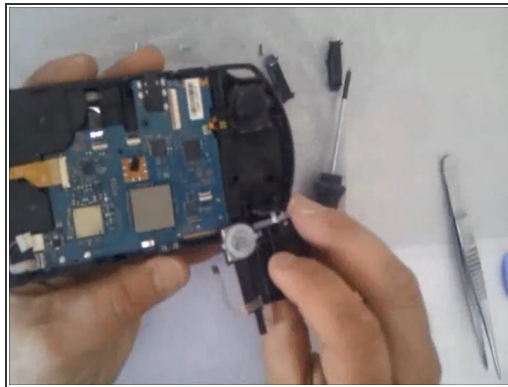
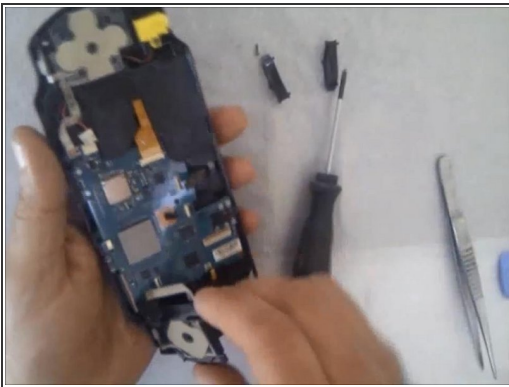
- **Remove this screw.**

## Step 5



- Insert wisdom here.

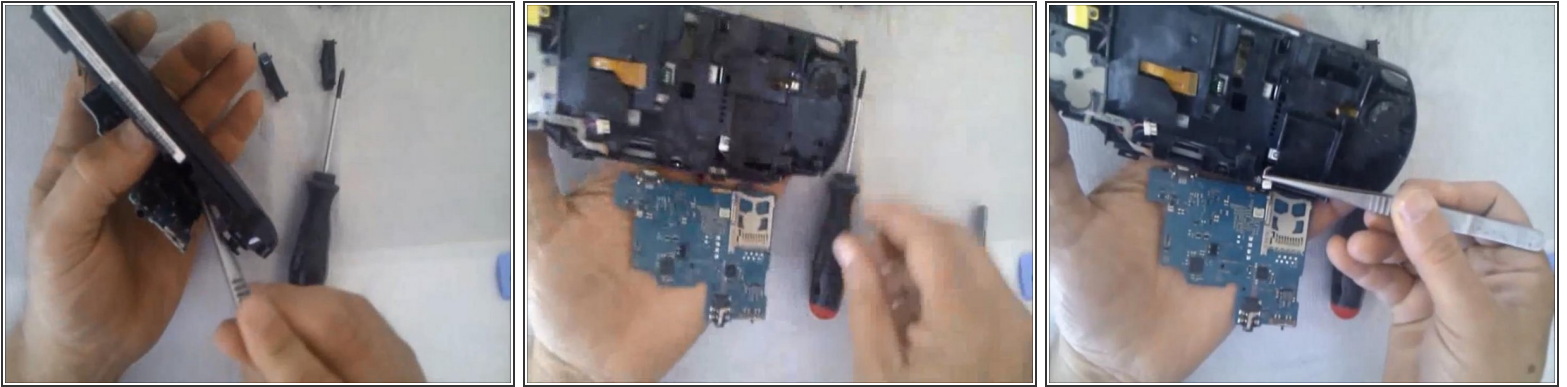
## Step 6



- Insert wisdom here.

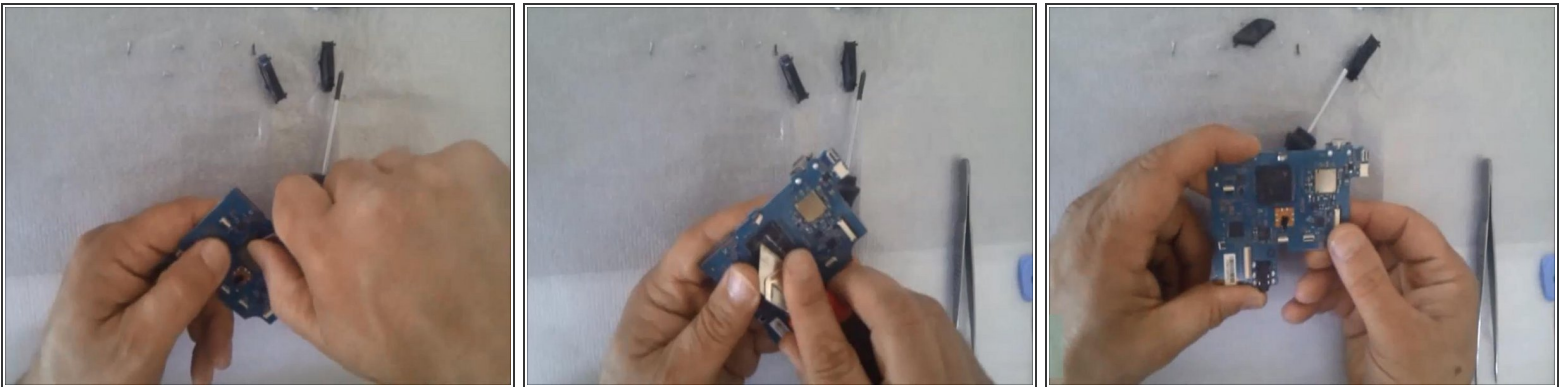


## Step 7



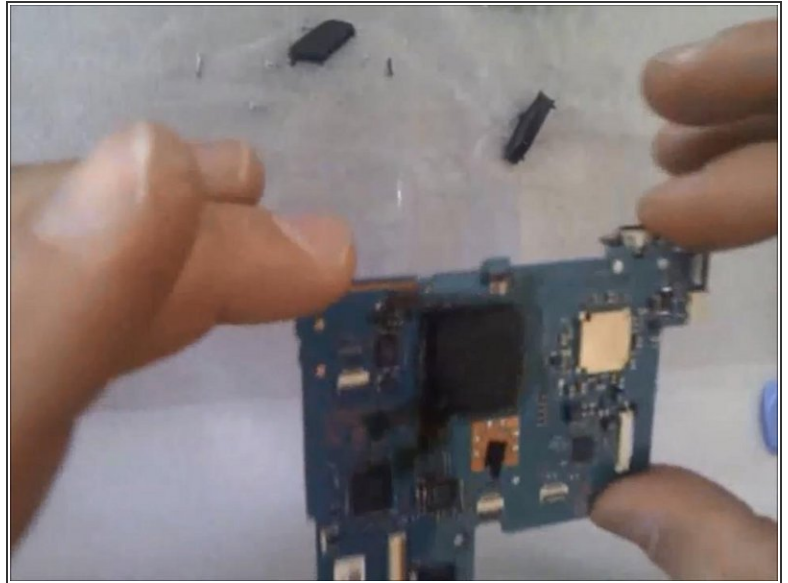
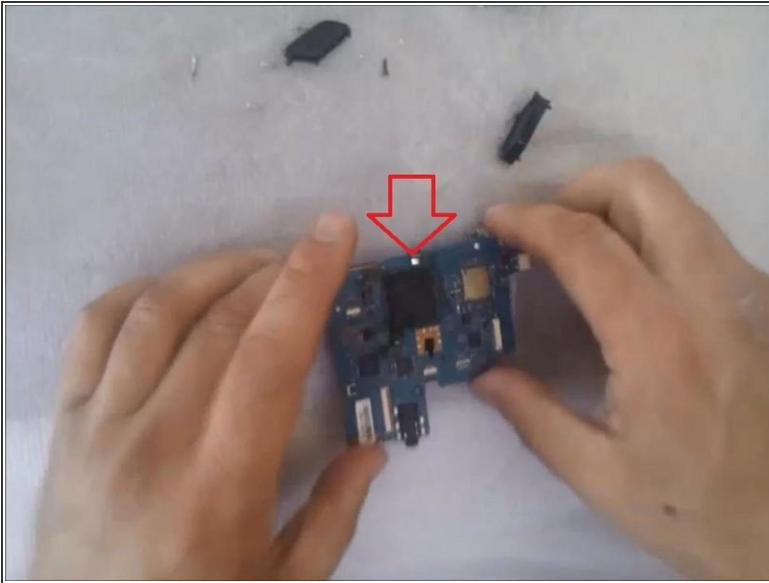
- **Carefully disconnect the battery connector!**

## Step 8



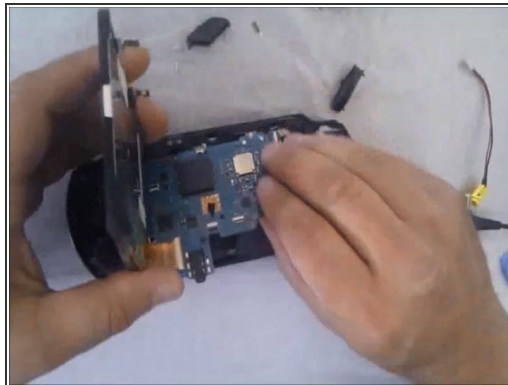
- **Remove the thermal tape.**

## Step 9



- You must resolder main processor with Rework Station (this is special equipment).

## Step 10



- Cleaning and assembling.

To reassemble your device, follow these instructions in reverse order.