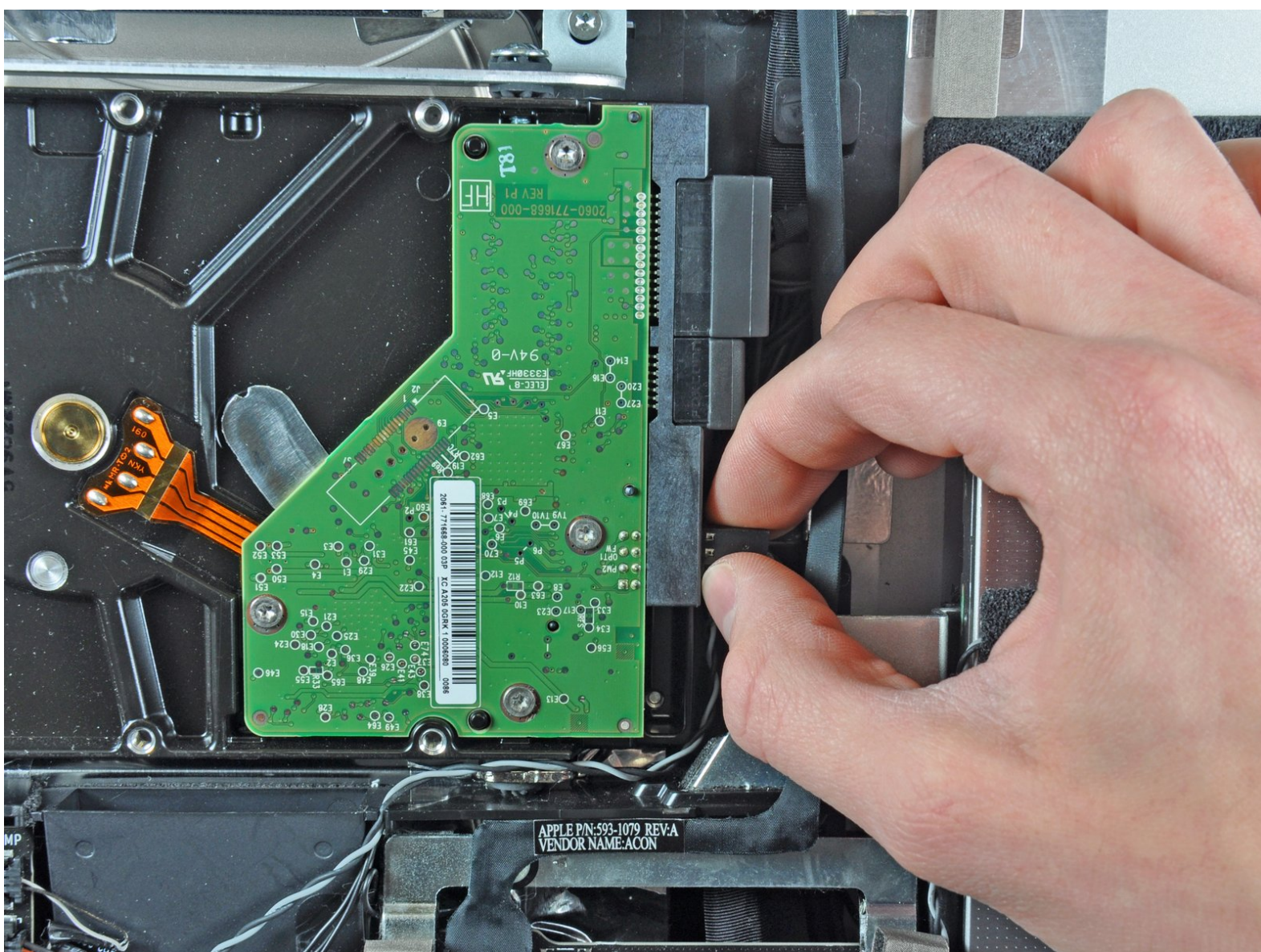




iMac Intel 21.5" EMC 2308 Hard Drive Replacement

Written By: Andrew Bookholt



INTRODUCTION

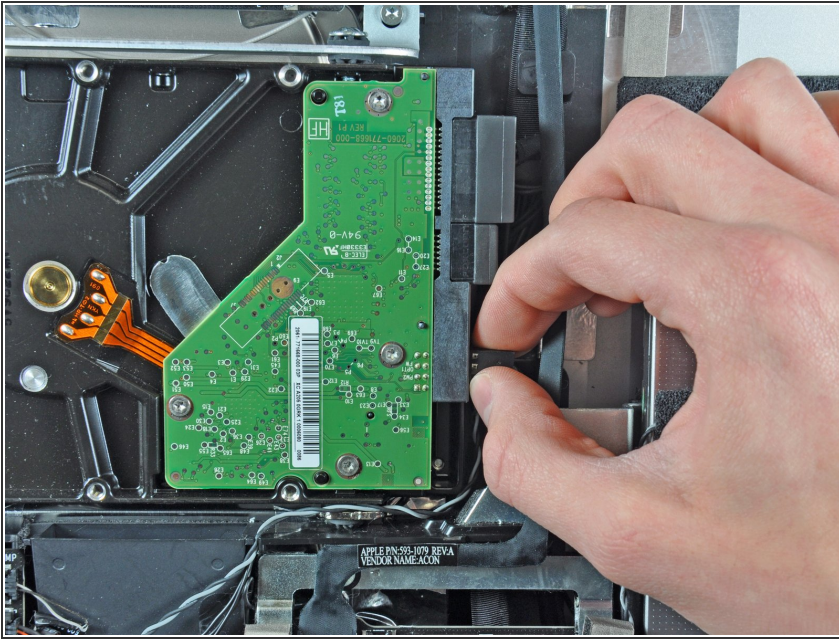
This guide is an internal prerequisite and should remain unpublished.





TOOLS:

- [T10 Torx Screwdriver](#) (1)
 - [Spudger](#) (1)
-

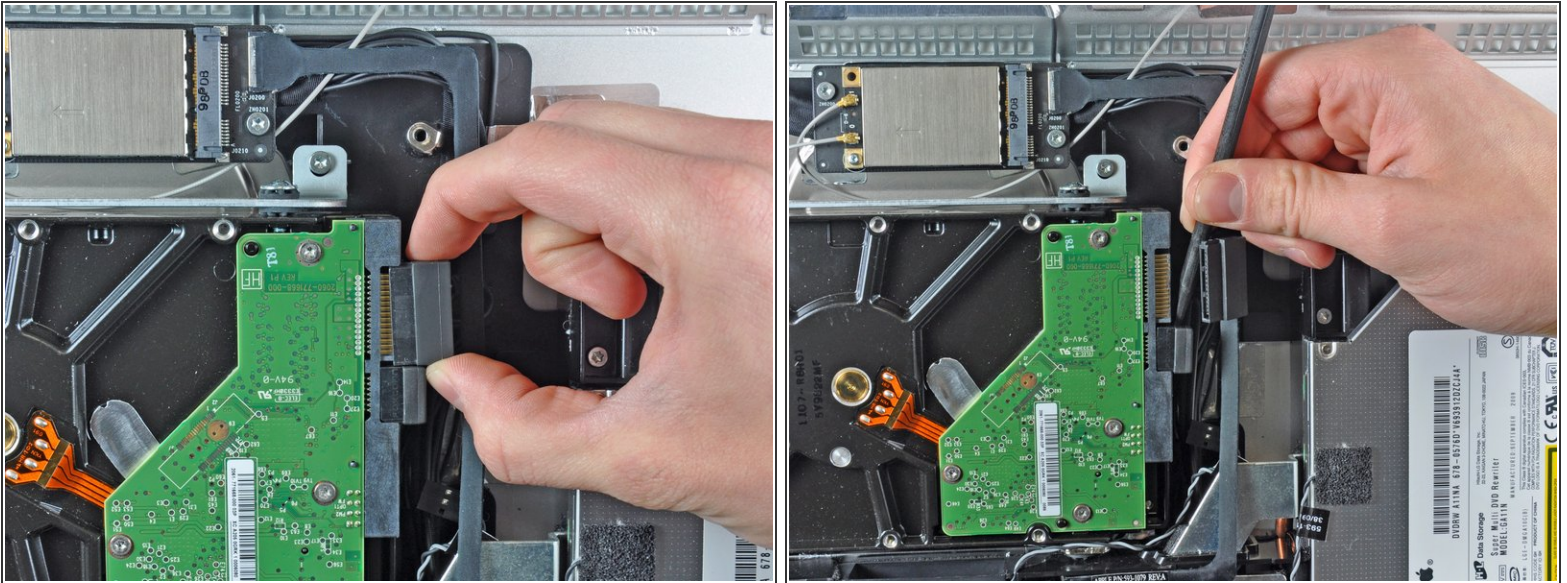
Step 1 — Hard Drive



 Before disconnecting the thermal sensor cable, take note of its orientation. It is extremely important to reinstall the connector **reversed** from the current orientation so the fans will not run at full speed.

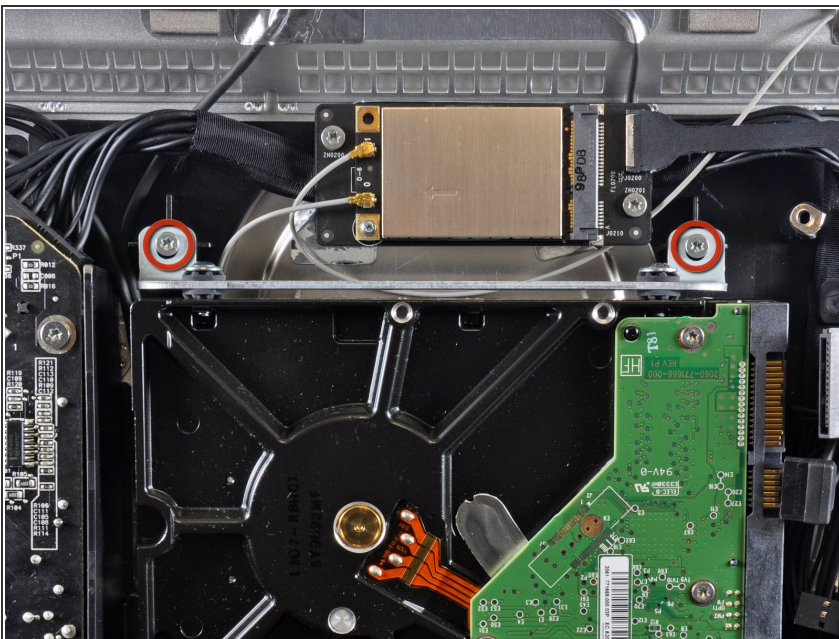
- Disconnect the thermal sensor by pulling its connector away from the side of the hard drive.
-  During reassembly, be sure that the thermal sensor connector is connected to set of pins closest to the SATA connectors. If the fans spin at full speed, reverse the connector's position.

Step 2



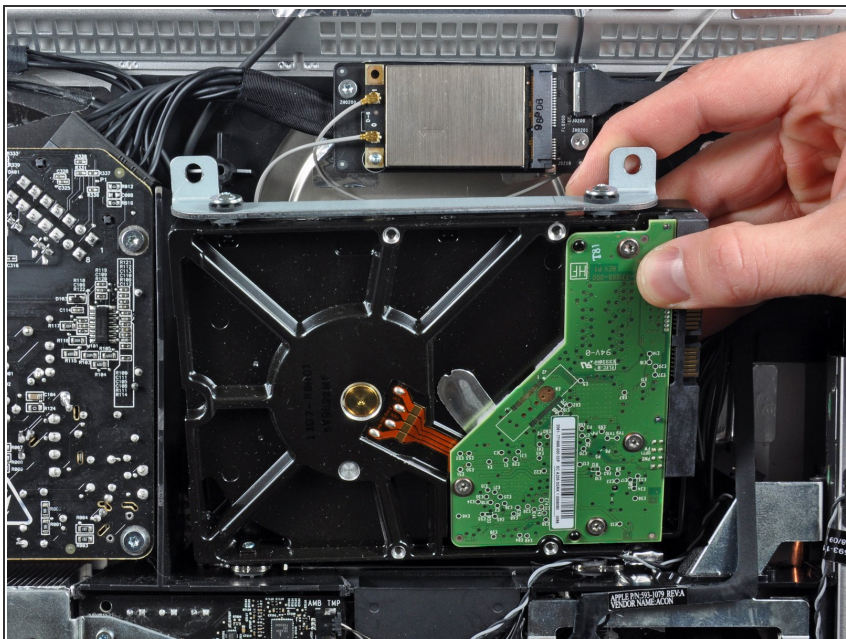
- Disconnect the SATA data cable by pulling its connector away from the hard drive.
- Use the flat end of a spudger to help disconnect the SATA power connector from the hard drive.

Step 3



- Remove the two 9 mm T10 Torx screws securing the upper hard drive bracket to the outer case.

Step 4



- Slightly rotate the hard drive out of the outer case and lift it up off its mounting pins toward the top edge of the iMac.

To reassemble your device, follow these instructions in reverse order.