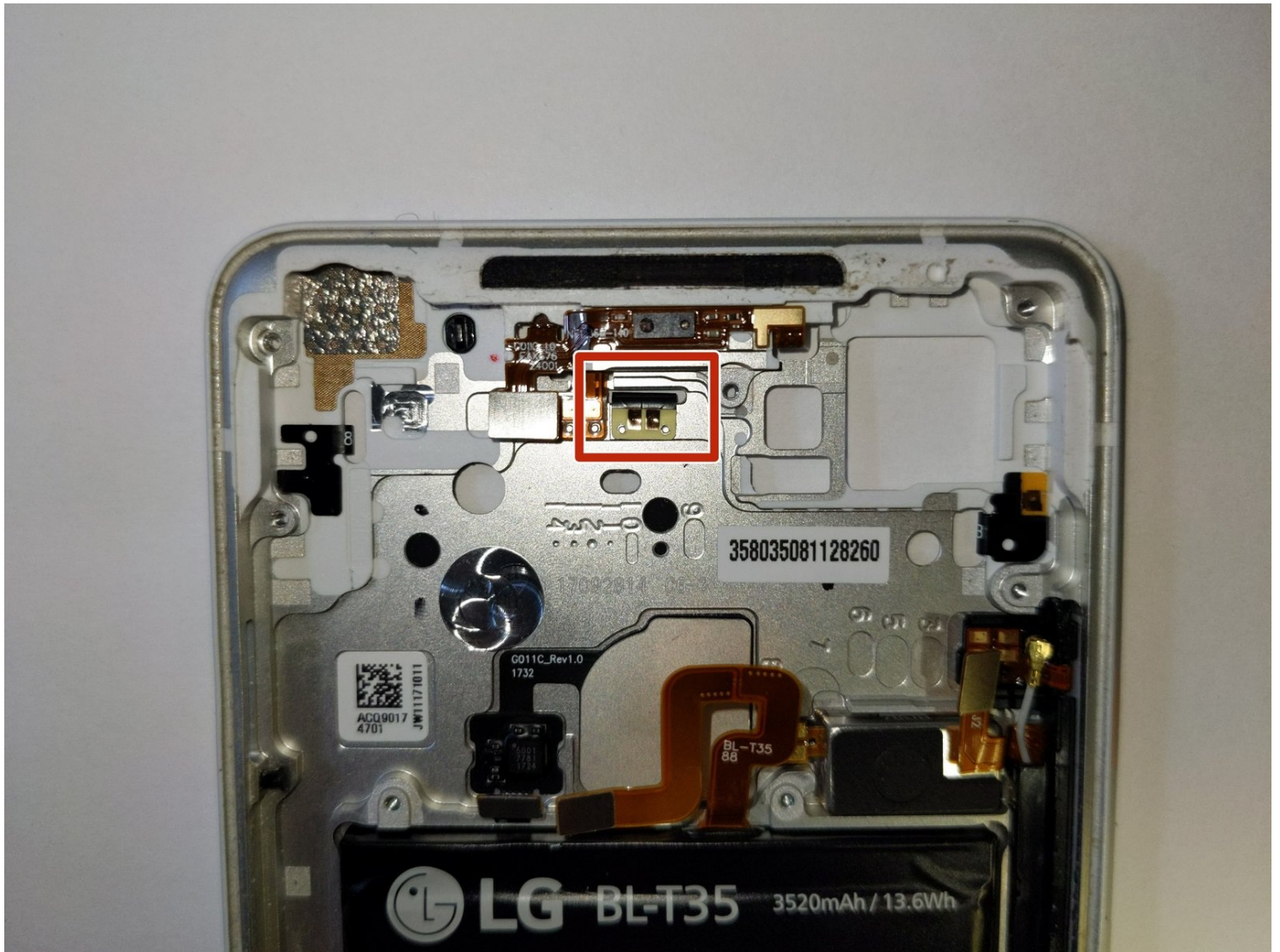




Google Pixel 2 XL NFC Antenna Replacement

This repair guide was authored by a member of...

Written By: Patrick

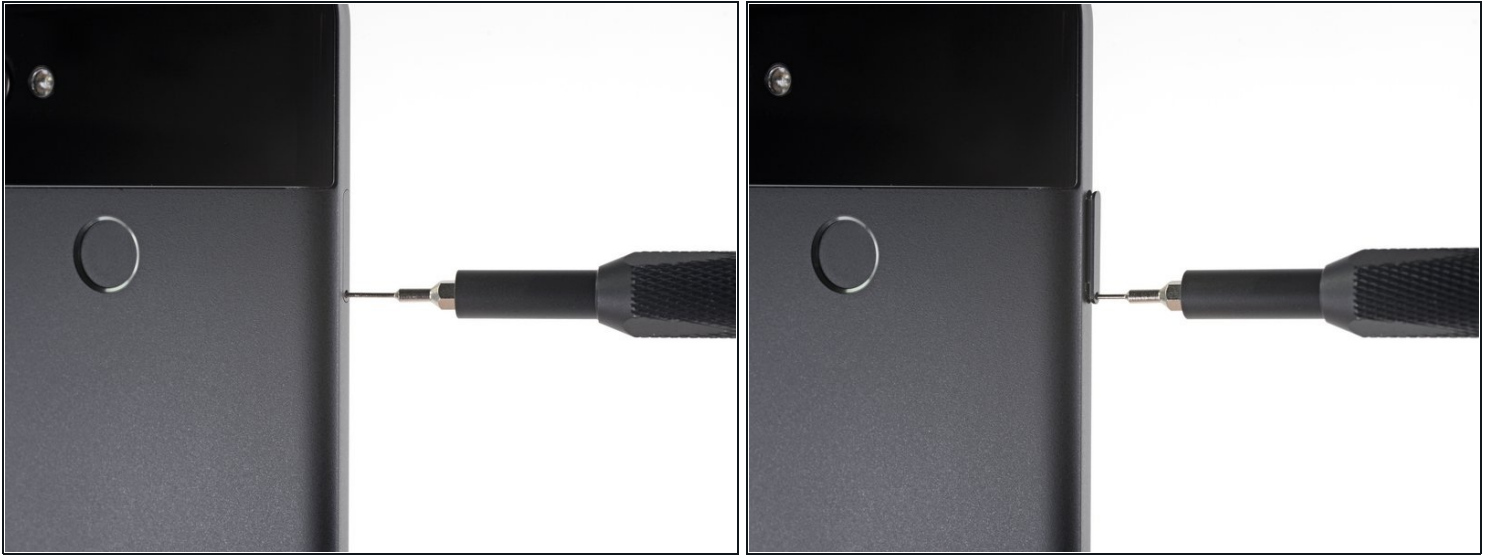


INTRODUCTION

This repair guide was authored by a member of the iFixit community and hasn't been endorsed by Google. Learn more about our repair guides [here](#).

Use this guide to replace the NFC antenna in a Google Pixel 2 XL.

Step 1 — SIM Card



- Insert a SIM card eject tool or a paperclip into the small hole in the SIM card tray, located on the left edge of the phone, opposite of the power and volume buttons.
- Press firmly to eject the tray.

Step 2



- Remove the SIM card tray from the phone.
- ① The SIM card will fall out of the tray easily.
- ★ When reinserting the SIM card, ensure that it is in the proper orientation relative to the tray.

Step 3 — Opening Procedure



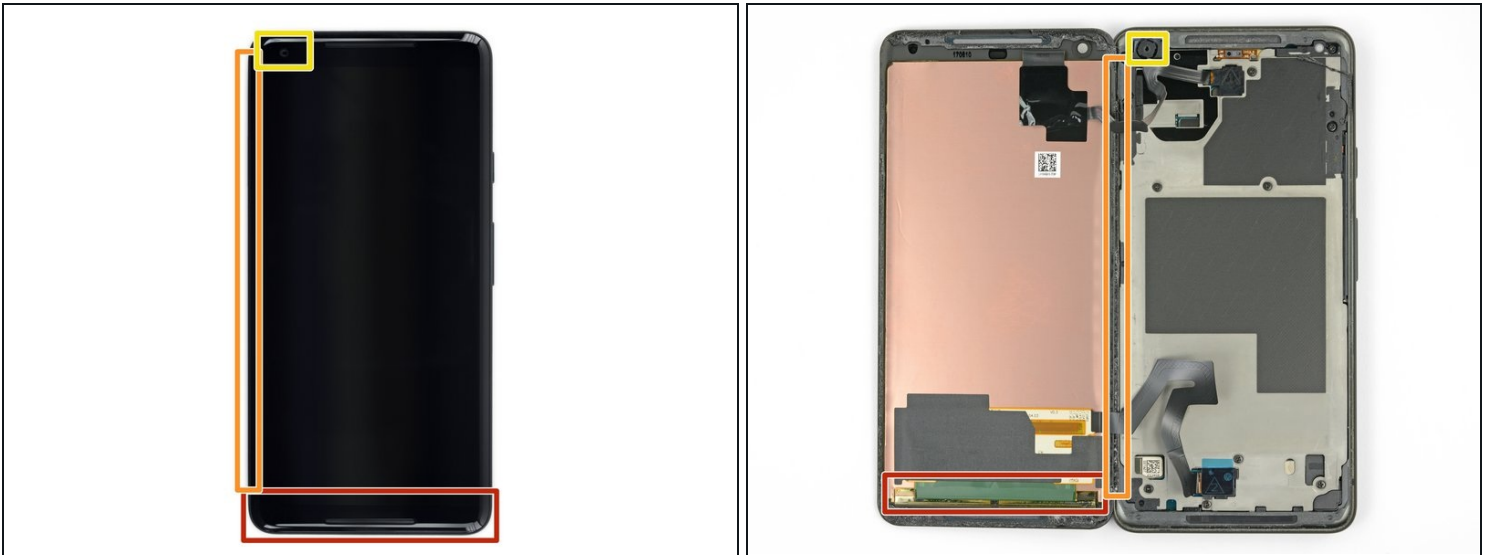
- ① If your display glass is cracked, tape over the glass to prevent bodily harm and further breakage. This also makes a smooth surface allowing the suction cup to bond.
- Apply a suction cup as close to the SIM slot edge of the phone as you can while avoiding the curved edge.
- ① The suction cup will not make a good seal on the curved portion of the glass.

Step 4



- Pull up on the suction cup with firm, constant pressure and insert an opening pick between the front panel and rear case.
- ⓘ This requires a significant amount of force and patience. If you have trouble, rock the suction cup and screen to weaken the adhesive, or apply heat with an iOpener, heat gun, or hair dryer.

Step 5



⚠ In the following steps, extra caution is required in certain areas to avoid damage to the phone:

- Do not insert the pick more than 0.25 inches (6 mm) into the bottom edge of the phone. If the pick contacts the folded portion of the OLED panel, it can damage the display.
- Do not cut along the left edge; there are delicate display cables that can be damaged.
- Only make very shallow cuts in the upper left corner; prying deeply can damage the front-facing camera.

Step 6



- Slide the opening pick down the right side of the phone to separate the display adhesive.

Step 7



ⓘ In the following steps, use the flat edge of the opening pick, rather than a corner, to cut. This will help prevent inserting the pick too deeply.

- Slide the opening pick around the lower-right corner and along the bottom edge of the phone.

Step 8



- Reinsert the flat edge of the pick at the top-right corner of the phone, and slide it around the corner and the top edge of the phone.

Step 9



- Gently lift the display from the right side of the phone, opening it like a book.
 - ⓘ If the display doesn't readily lift, do some extra prying to separate the last of the adhesive.
- ⚠ Don't try to fully separate the display yet, as fragile ribbon cables still connect it to the phone's motherboard.
- Carefully lay the display flat on the table next to the rest of the phone, keeping it close to the phone to avoid straining the display and digitizer cables.

Step 10



- Use the corner of an opening tool to pry up and unclip on the lower edge of the digitizer cable connector cover.

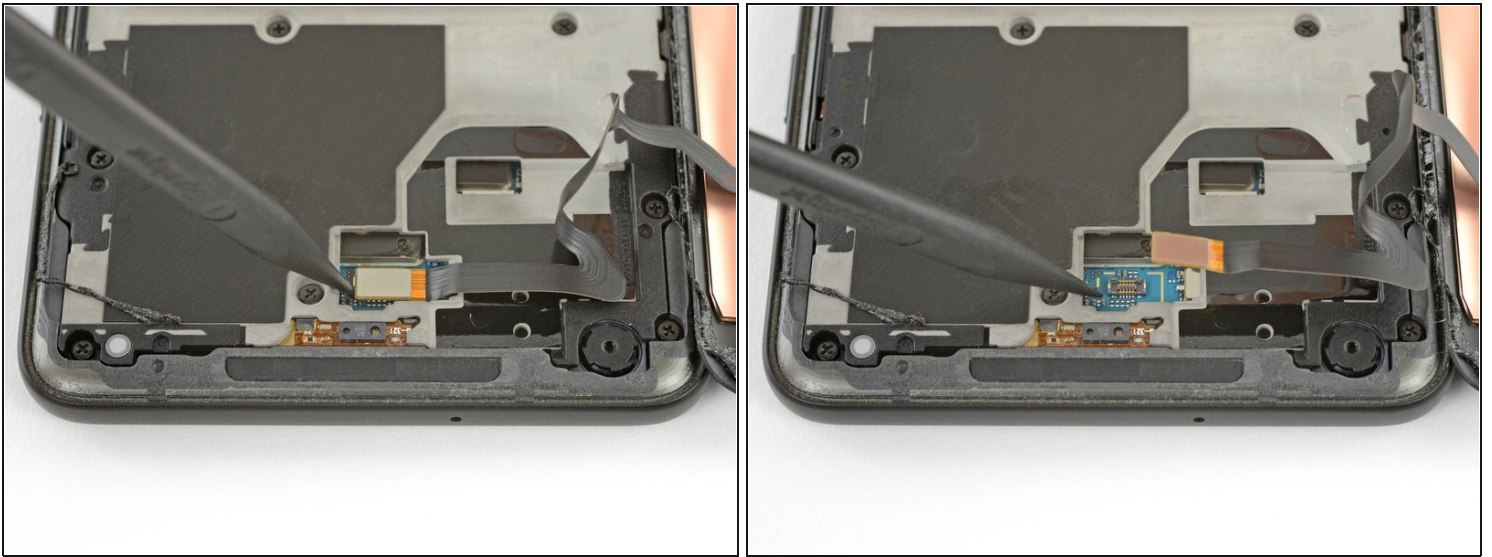
ⓘ The clip securing this cover is [along the bottom edge](#).

⚠ Pry carefully to avoid damaging the cable underneath, or losing the cover itself.

- Remove the connector cover.

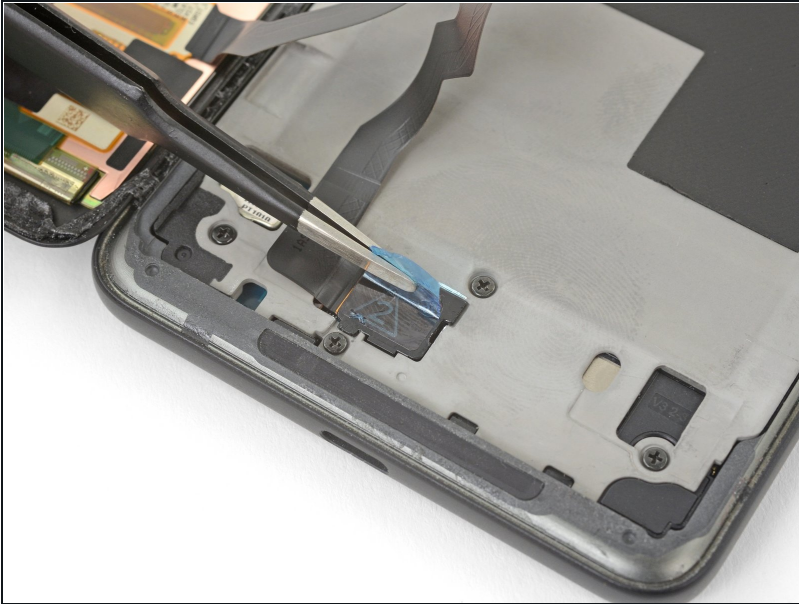
ⓘ Make sure to keep this component so you can reinstall it during reassembly.

Step 11



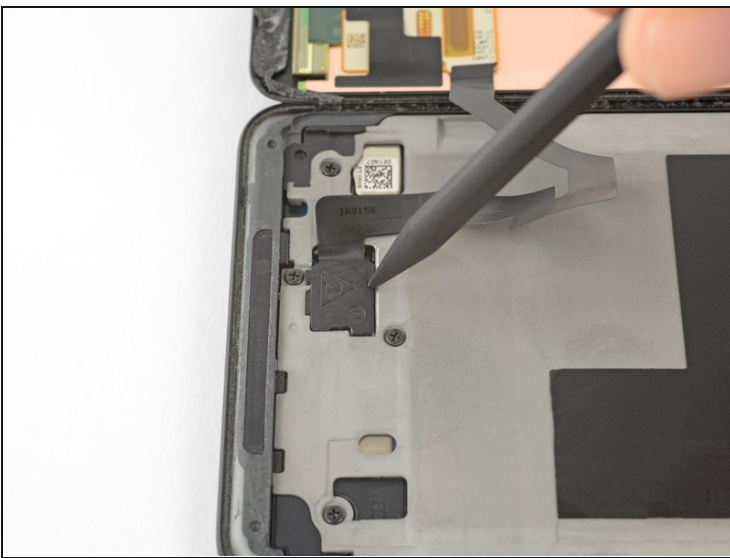
- Use the point of a spudger to lift the digitizer cable connector up and out of its socket on the motherboard.
- ☑ To re-attach [press connectors](#) like this one, carefully align and press down on one side until it clicks into place, then repeat on the other side. Do not press down on the middle. If the connector is misaligned, the pins can bend, causing permanent damage.
- ☑ If any part of your screen doesn't respond to touch after your repair, re-seat this connector, making sure it clicks fully into place and that there's no dust or other obstruction in the socket.

Step 12



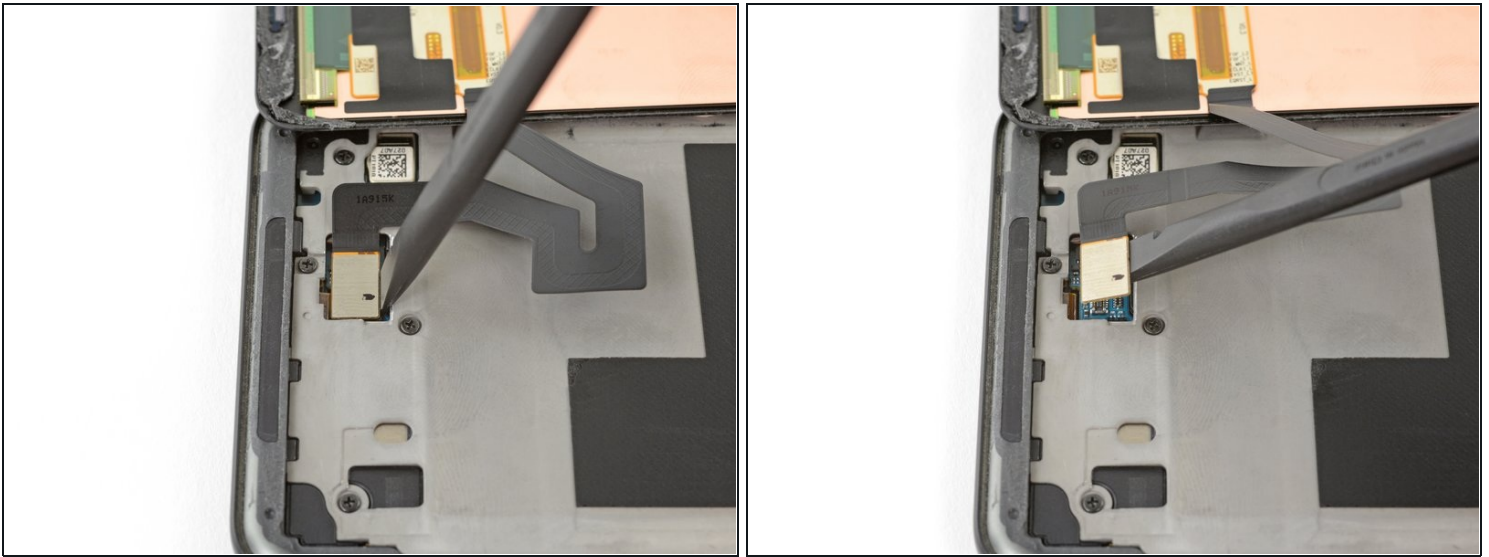
- Use tweezers to remove any tape from the display connector cover.

Step 13



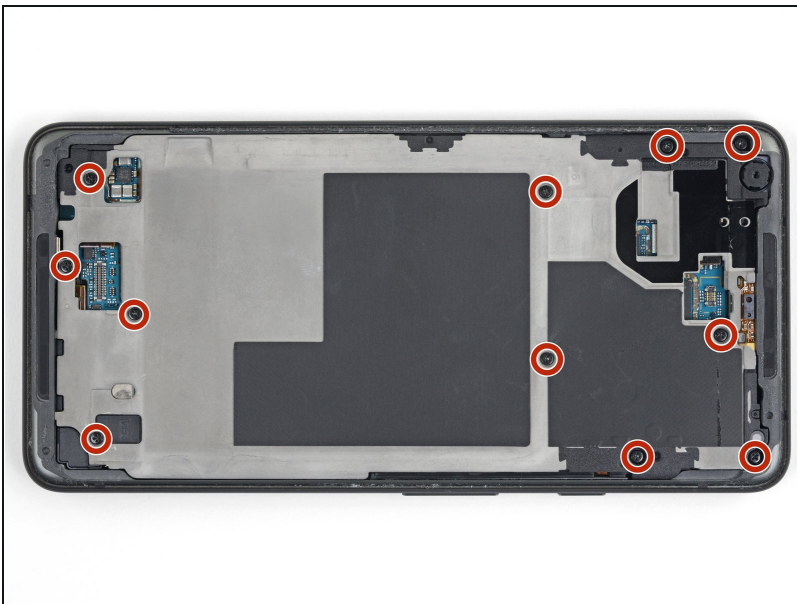
- Insert the point of a spudger into the small hole on the edge of the display connector cover.
 - Use the spudger to pry the cover out of its recess.
 - Remove the connector cover.
- ⓘ Make sure to keep this component so you can reinstall it during reassembly.

Step 14



- Use the flat edge of a spudger to lift the display cable connector up from its socket.
 - Remove the display.
- ☒ During reassembly, pause here if you wish to [replace the adhesive around the edges of the display](#).

Step 15 — Midframe



- Remove eleven 3.8 mm Phillips screws securing the midframe.
- ☒ Throughout this repair, [keep track of each screw](#) and make sure it goes back exactly where it came from.

Step 16



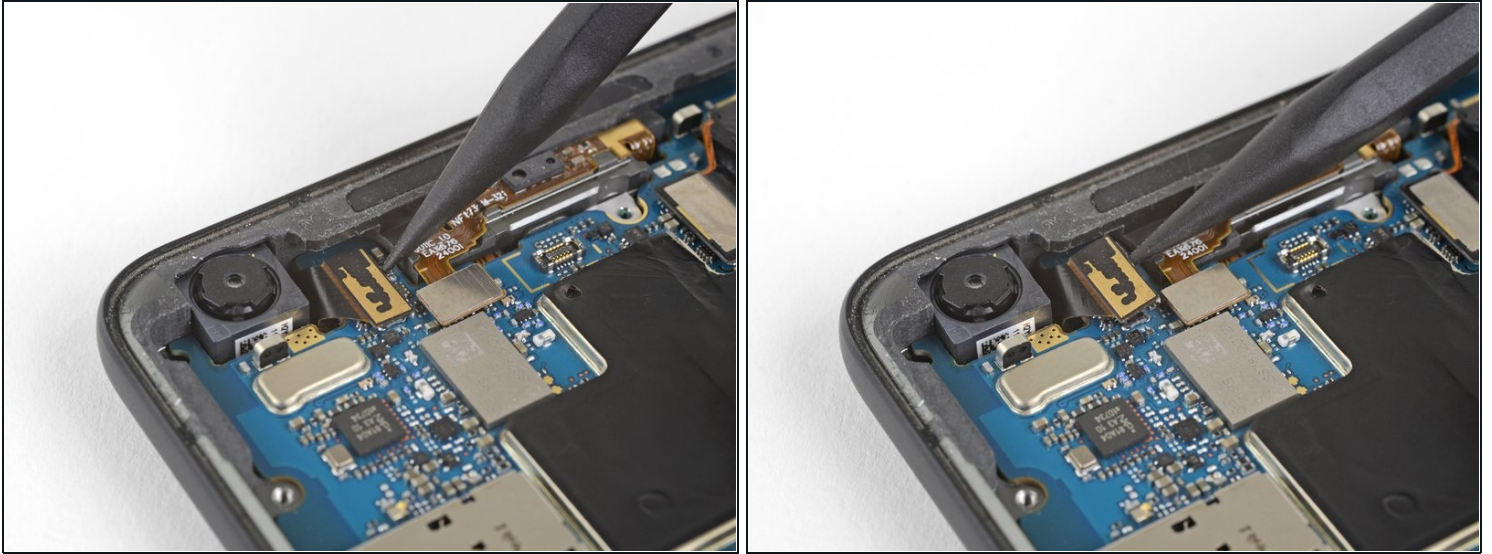
- Insert an opening tool into the notch in the midframe near the volume buttons and pry the midframe up and away from the rest of the phone.
- Remove the midframe.

Step 17 — Battery Connector



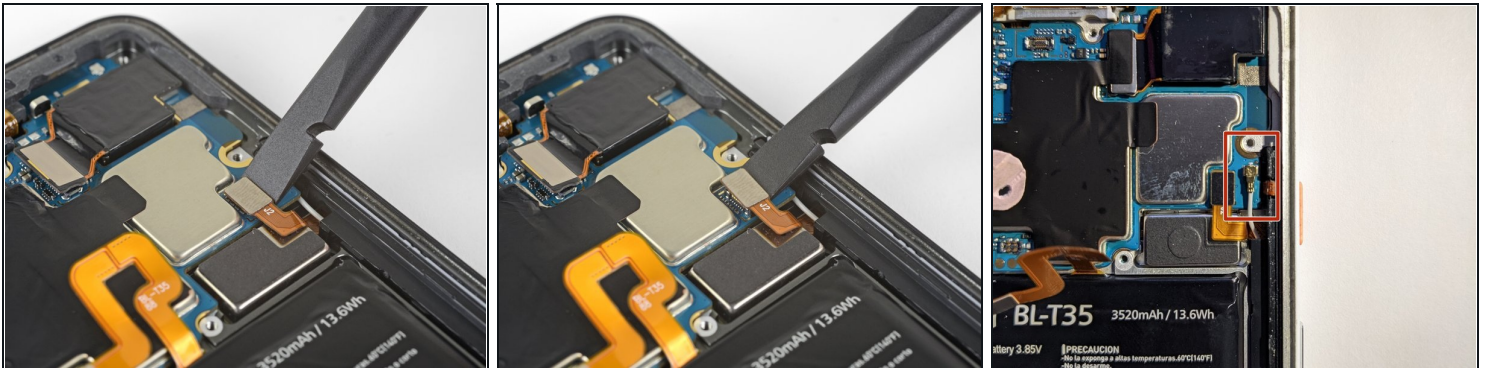
- Use the flat end of a spudger to disconnect the battery connector.

Step 18 — Motherboard



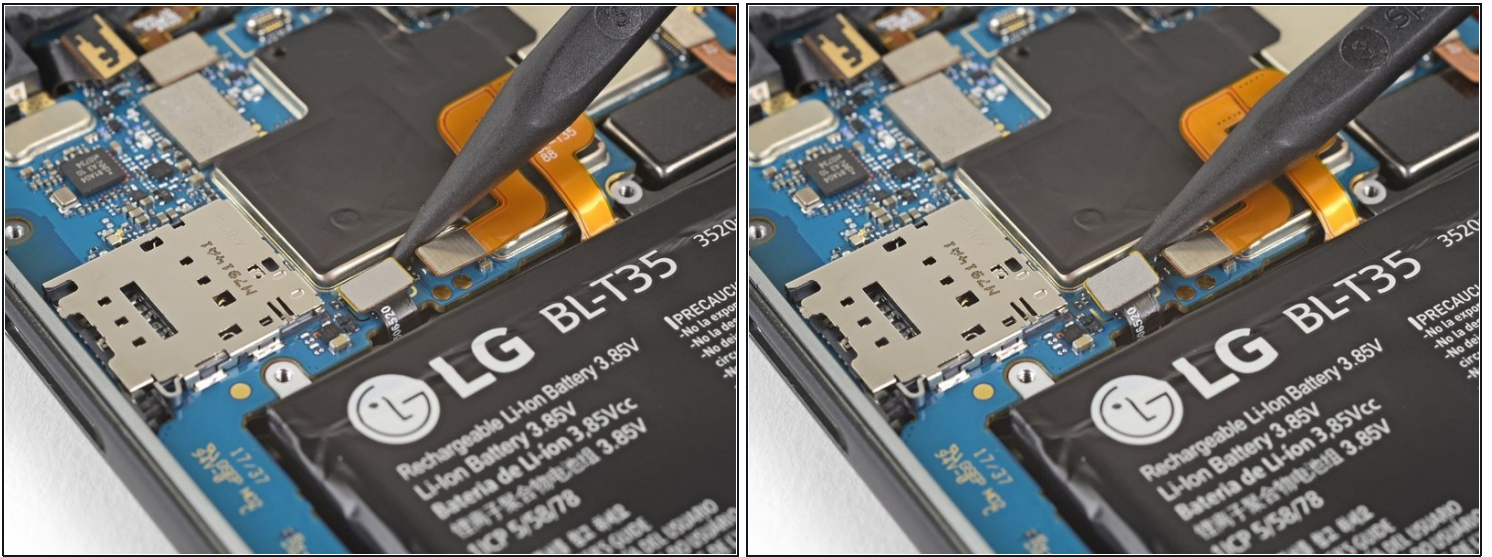
- Use the point of a spudger to disconnect the front-facing camera connector.
- ✦ During reassembly, it's easiest to attach the front camera to the motherboard, then insert the motherboard.

Step 19



- Use the flat end of a spudger to disconnect the right Active Edge sensor connector.
- Disconnect the antenna cable.

Step 20



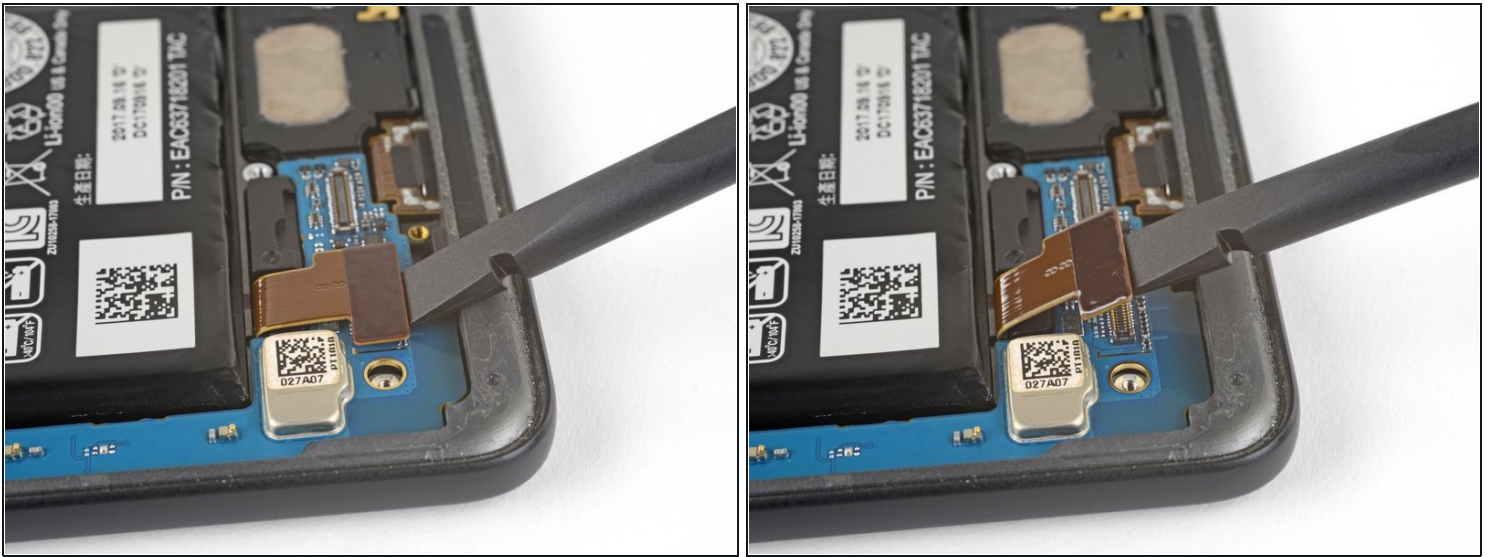
- Use the point of a spudger to disconnect the fingerprint sensor connector.

Step 21



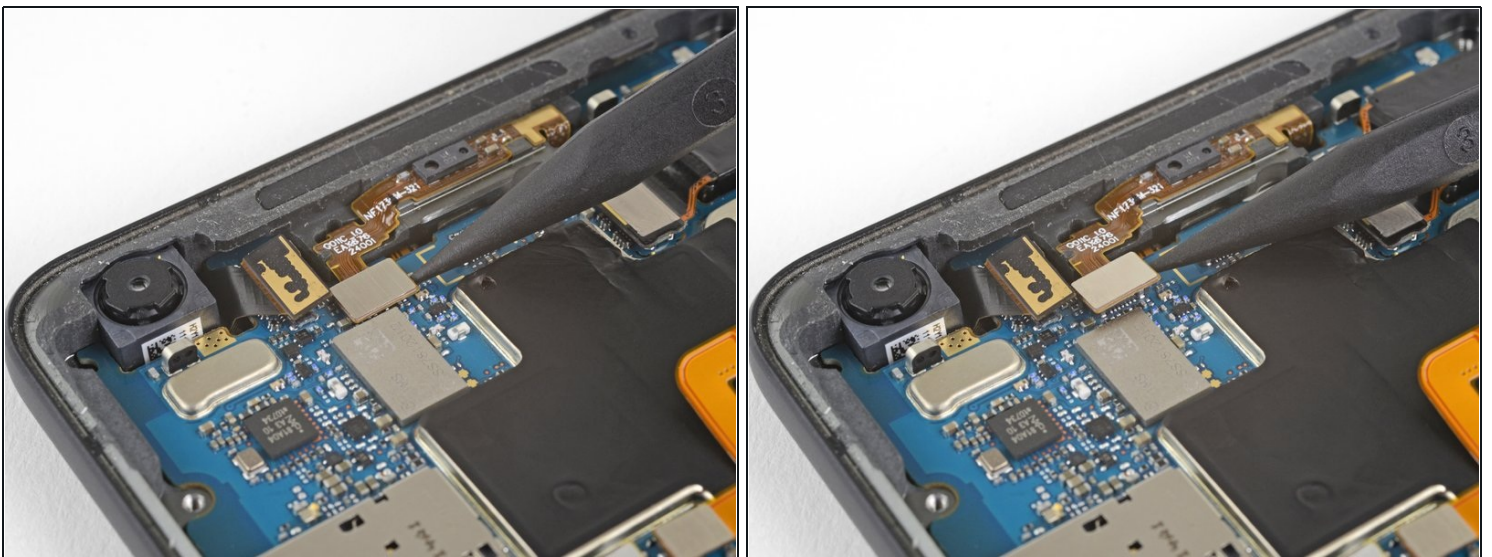
- Use the flat end of a spudger to disconnect the left Active Edge sensor connector.

Step 22



- Use the flat end of a spudger to disconnect the charging assembly connector.

Step 23



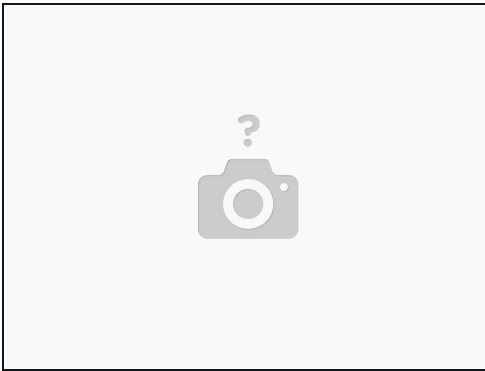
- Use the point of a spudger to disconnect the front-facing sensor assembly connector.

Step 24



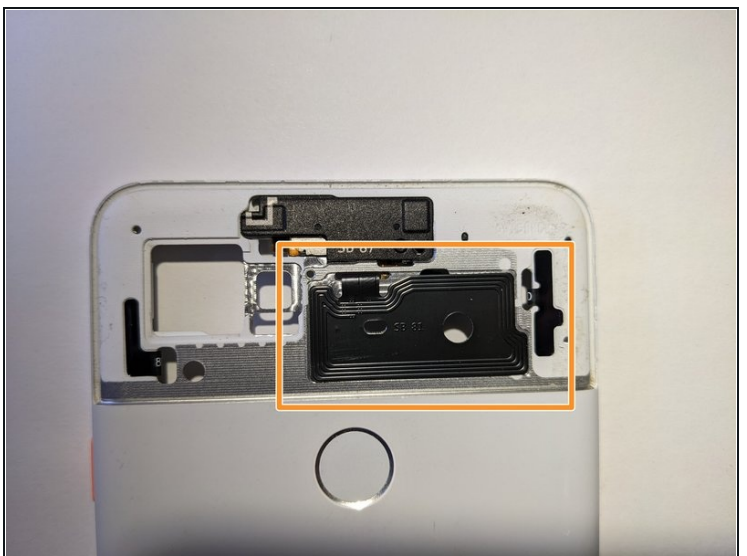
- Make sure all the cables and connectors are clear of the board, and use the flat edge of a spudger to gently lift the bottom of the motherboard.
- ⚠ The narrow part of the motherboard is very fragile. If it starts to bend when you lift, stop and make sure there isn't anything holding the board down. The board should lift up without any resistance.
- Holding the wide part of the motherboard near the SIM card slot, carefully slide the board toward the bottom of the phone while lifting it out of the phone.
 - Remove the motherboard.
 - Try to keep the phone flat with the battery facing up after you remove the motherboard, as the front-facing camera can fall out of the phone case very easily.
- ★ When reinstalling the motherboard, move all the cables and connectors out of the way of the board and make sure all connectors are aligned with their respective sockets.

Step 25 — Back Glass



- Apply plenty of heat to the right side of the back glass.
- Use a small suction cup and pull the glass up to put an opening pick under it.
 - ⓘ The suction cup included in the iFixit kit is too big.
- If you do not have a suction cup, you can try to fit a jimmy underneath the glass. You will likely damage the enamel using this method.
- Keep applying heat and slowly moving the opening picks around the top of the phone.

Step 26 — NFC Antenna



- Apply gentle heat to the NFC antenna contact and detach it from the frame.
- Apply gentle heat to the NFC antenna and peel it off of the frame.

To reassemble your device, follow these instructions in reverse order.