



PlayStation Start and Select Buttons Replacement

This guide explains step by step how to replace the start, select, and PlayStation button rubber pad.

Written By: Gabriel Ortiz



INTRODUCTION

If your Playstation DualShock 3 controller's Start, Select, or PlayStation rubber buttons are damaged, cracked, or ripped, use this guide to replace the rubber and restore the button's function. When this rubber piece is damaged, the controller might not be able to read the button's input.

Before using this guide, test the buttons by pressing down on them from different angles. Typically, there will be no input received if the button is pressed too lightly, or from the sides.

In Step 3, the #2 trigger buttons might pop off while removing the rear cover. If that happens, refer to [this guide](#).



TOOLS:

- [Phillips #1 Screwdriver](#) (1)
- [Tweezers](#) (1)



PARTS:

- [DualShock 3 Start-Select-PlayStation Rubber Button Replacement](#) (1)

Step 1 — Start and Select Buttons



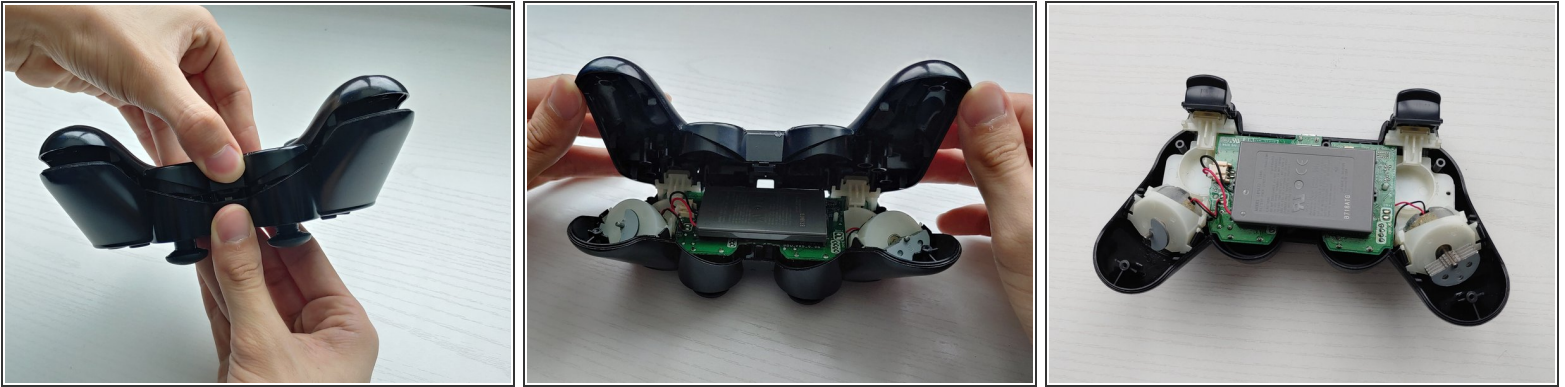
⚠ Before you begin, unplug your controller and console to avoid accidentally turning it on during disassembly.

Step 2



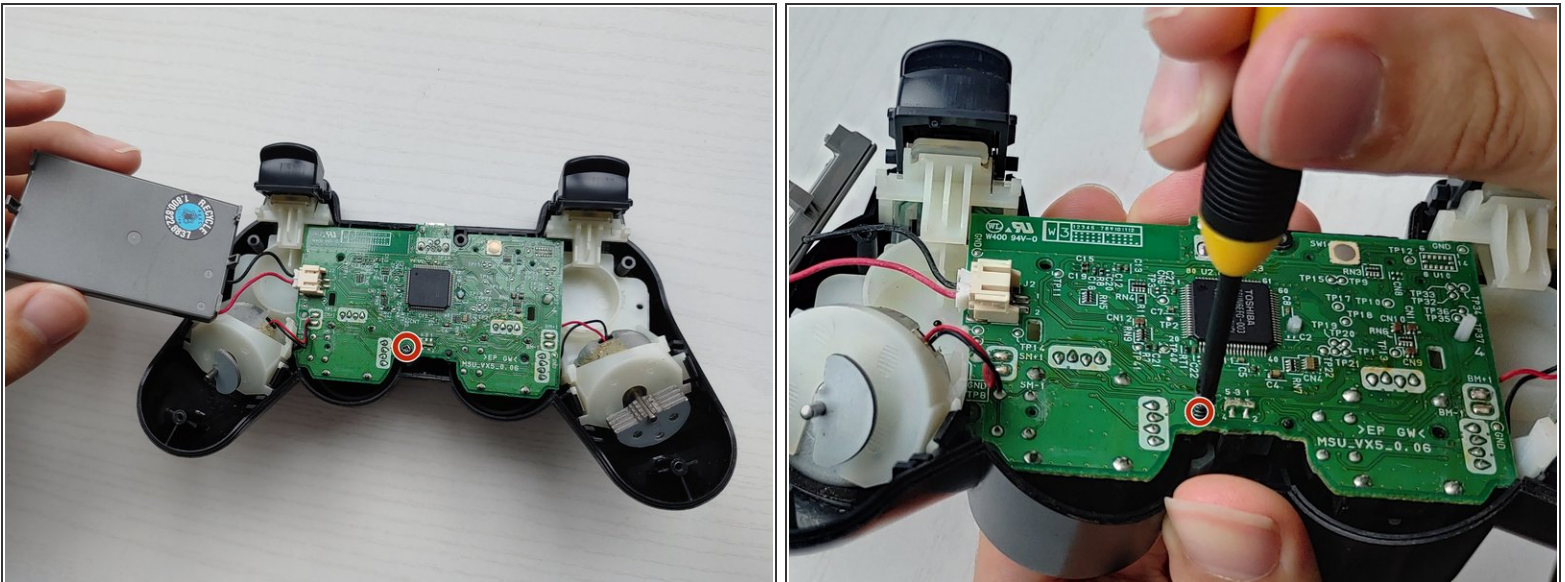
- Use a Phillips #1 screwdriver to remove the five 7.2 mm screws securing the rear cover.

Step 3



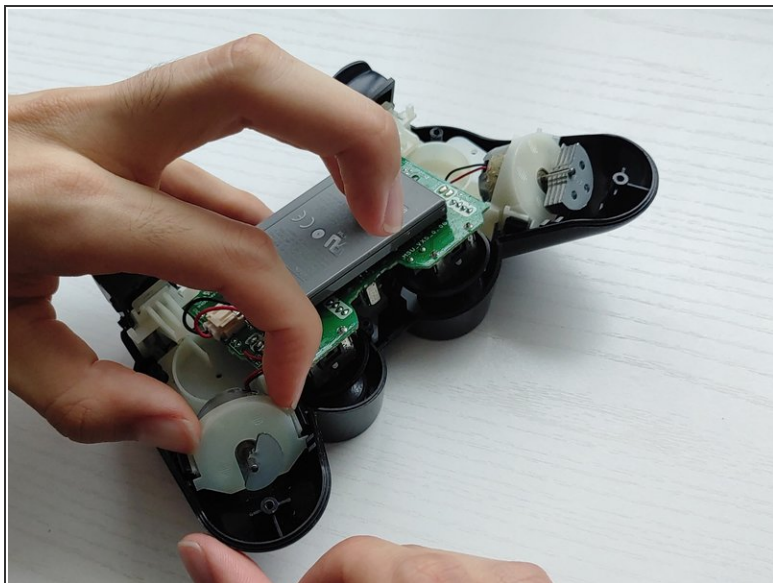
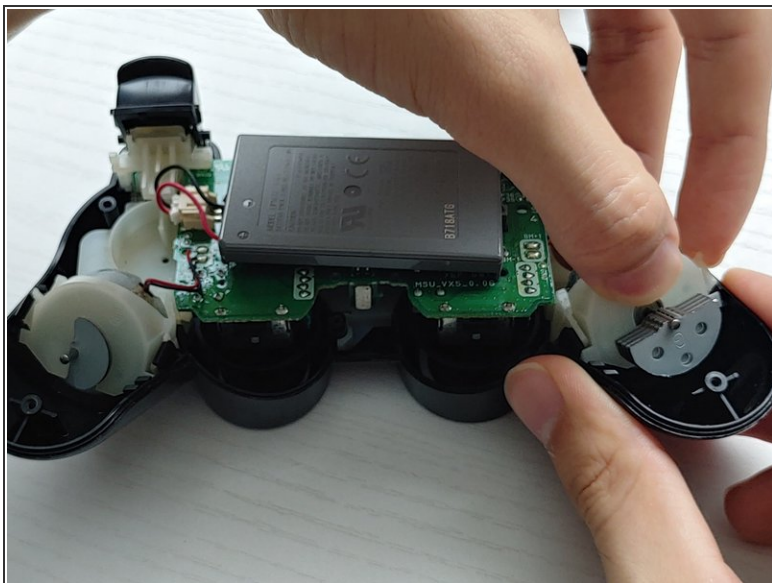
- Gently push the rear cover towards the front of the #2 trigger buttons.
- Lift the rear cover.
- ⓘ The #2 trigger buttons may come off when removing the cover.

Step 4



- Lift the battery and set it beside the controller, with care not to strain the wires.
- Use a Phillips #1 screwdriver to remove the single 7.2 mm screw securing the motherboard.

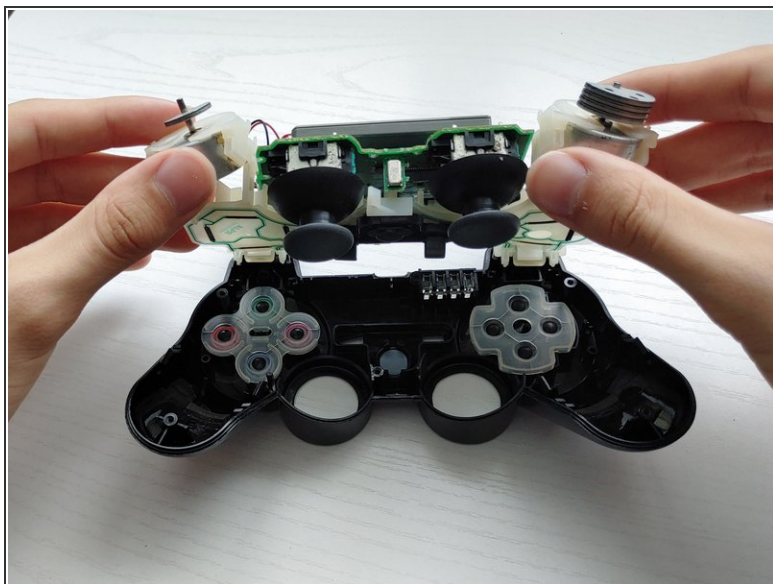
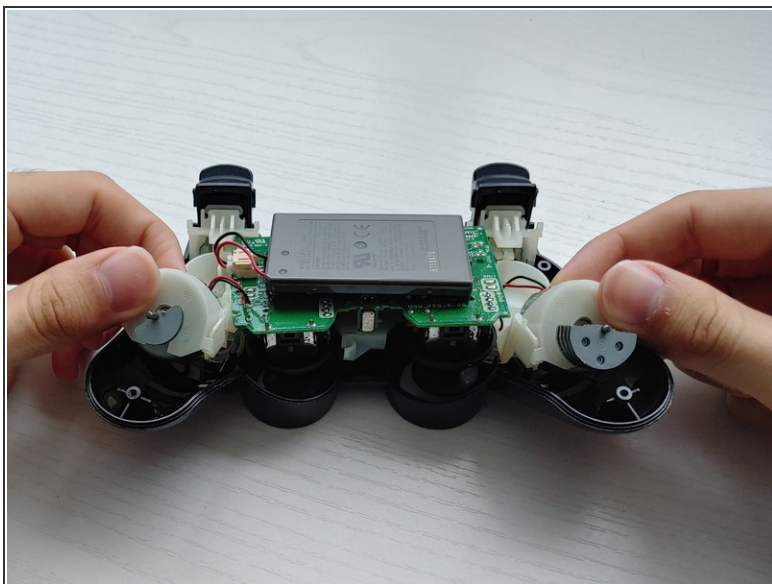
Step 5



- Unclip the vibrating motors.

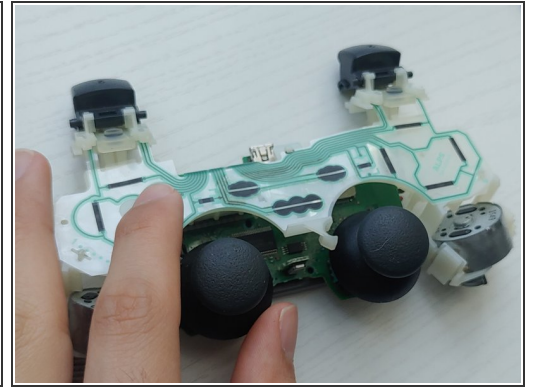
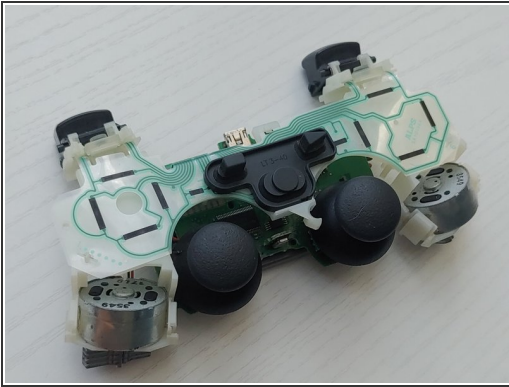
⚠ Be careful not to break the black and red wires connected to the motherboard. They are very fragile!

Step 6



- Lift off the plastic housing holding the motherboard, battery, and vibrating motors.

Step 7



- Remove the rubber buttons with a pair of tweezers.

To reassemble your device, follow these instructions in reverse order.