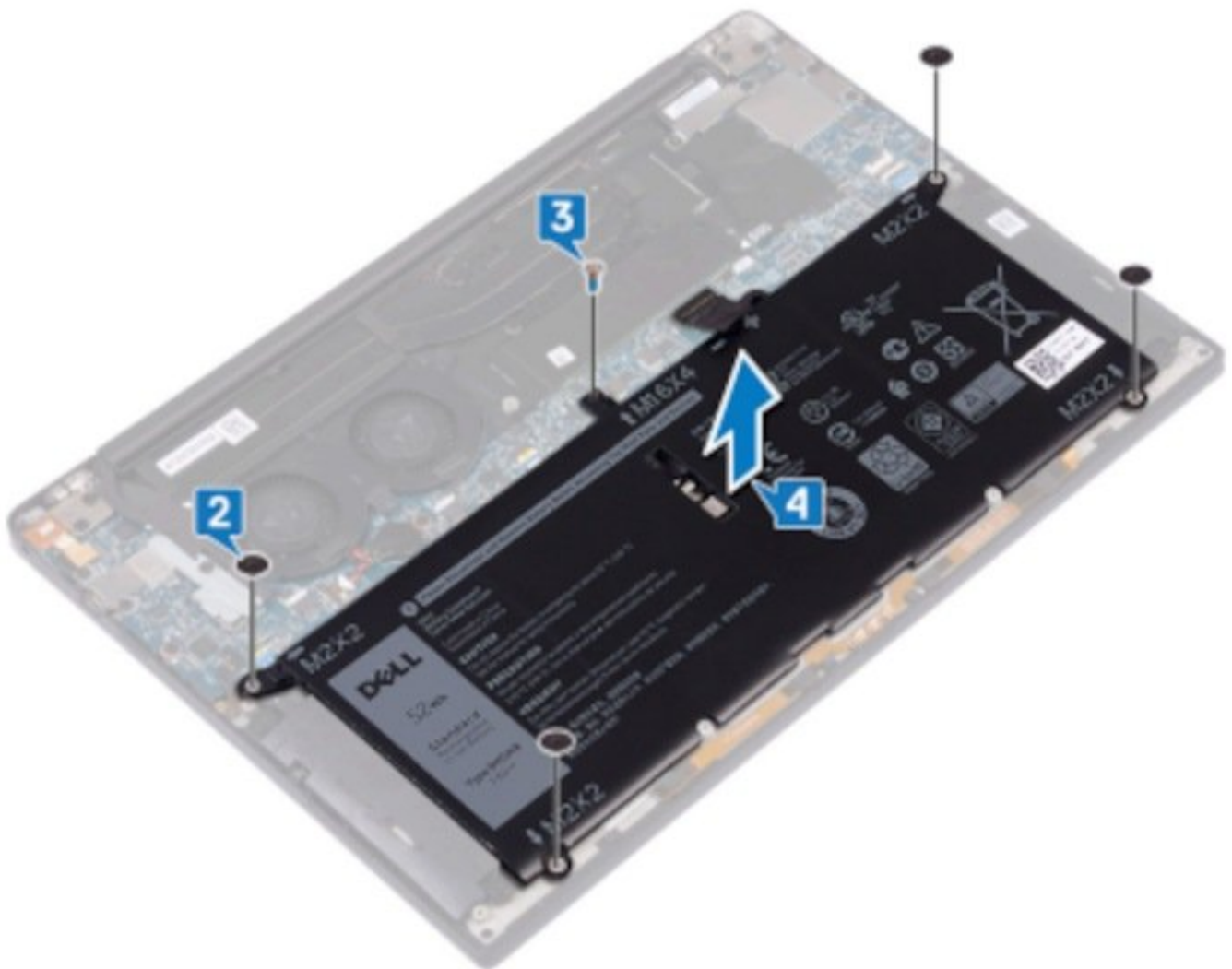




# Dell XPS 13 7390 Battery Replacement

If your Dell XPS 13 7390 has lost its ability...

Written By: Max Kletskov



## INTRODUCTION

If your Dell XPS 13 7390 has [lost its ability to hold a charge](#), you probably have a dead battery that needs to be replaced.

A working Dell XPS 13 7390 battery provides power to your computer. Laptop batteries discharge more quickly after a large number of charge cycles. If you notice that your battery is discharging faster than usual, perform a battery calibration to accurately determine its charge capacity. If you continue to notice large drops in charge percentage, you should replace your battery.

A punctured Dell XPS 13 7390 battery can start a fire. If your battery is swollen, [take appropriate precautions](#).

Be sure to turn off your device before you begin.



### TOOLS:

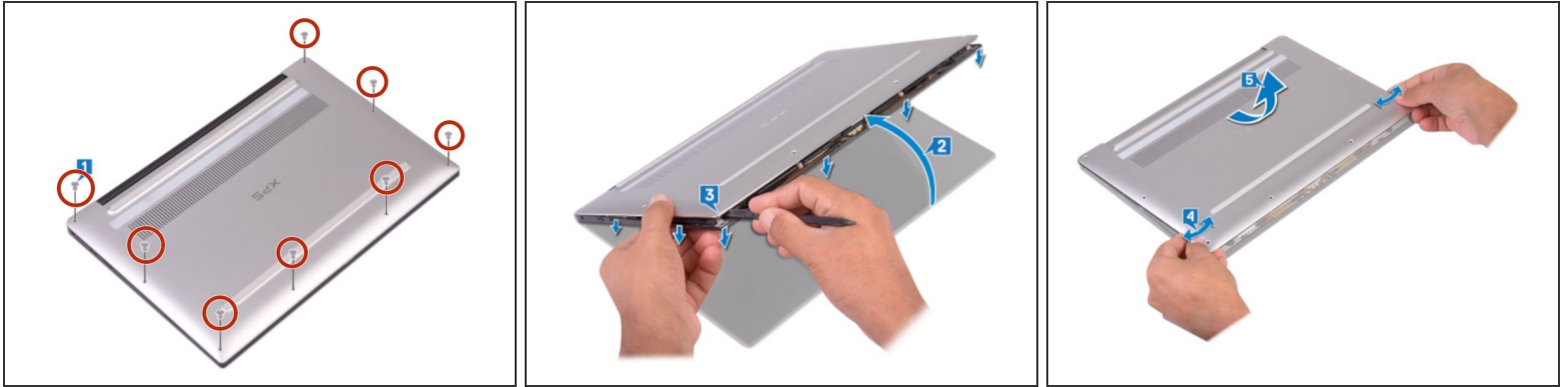
- [T5 Torx Screwdriver](#) (1)
- [Phillips #0 Screwdriver](#) (1)
- [Phillips #1 Screwdriver](#) (1)



### PARTS:

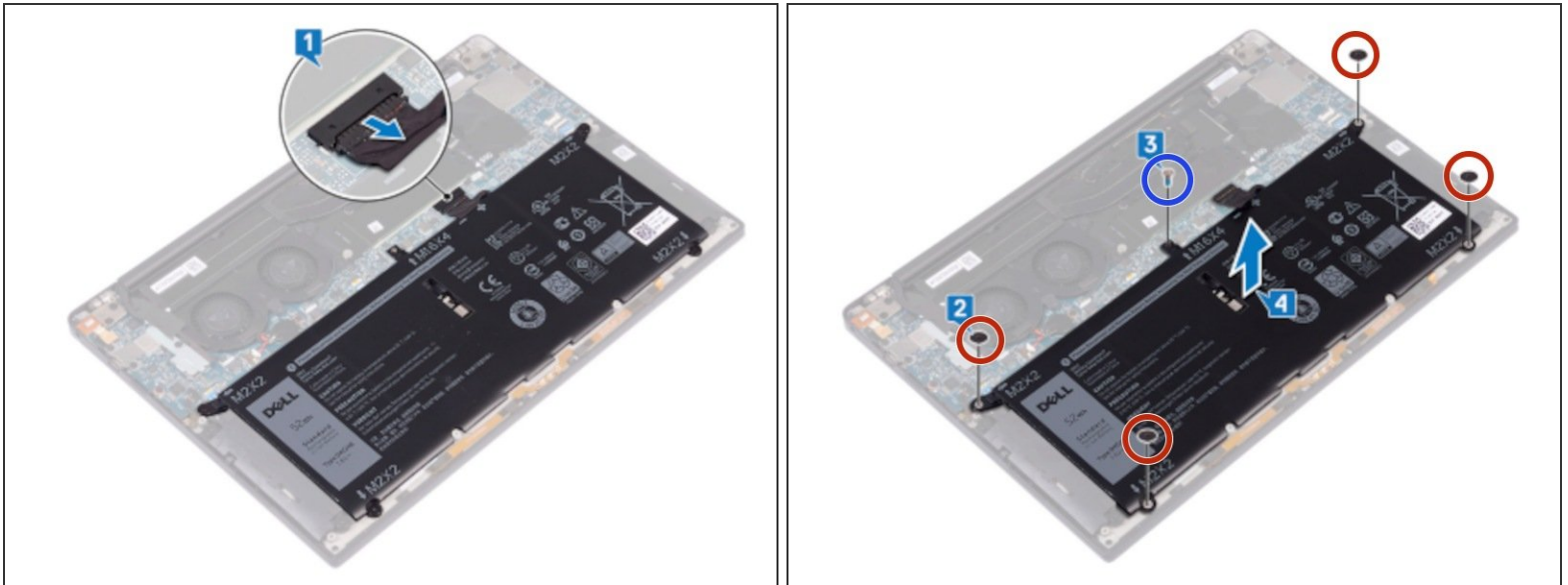
- [Dell XPS 13 7390, 9370, and 9380 Battery](#) (1)

## Step 1 — Removing the base cover



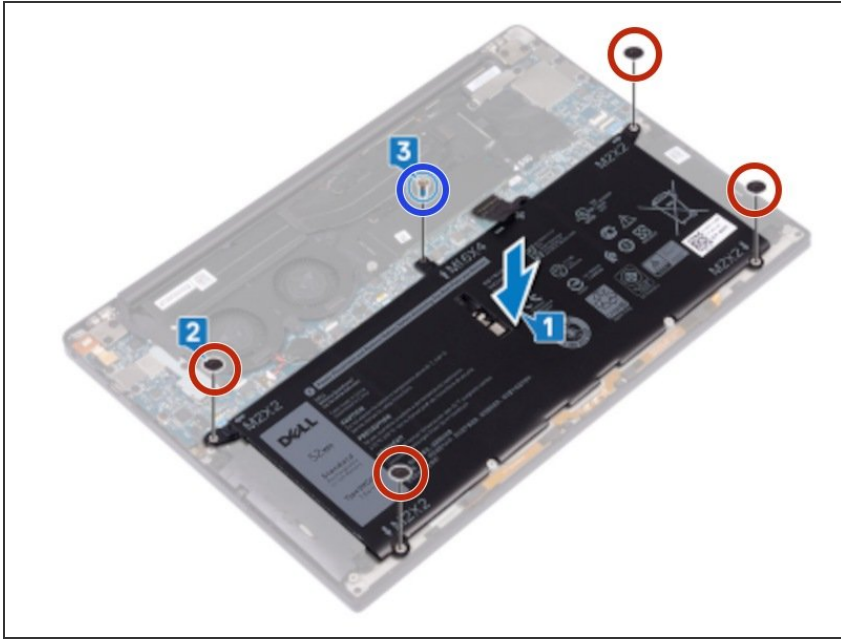
- Remove the eight screws (M2x3, Torx) that secure the base cover to the palm-rest assembly
- With the computer face-down, open the computer at an angle.
- Using a plastic scribe, pry the base cover from the palm-rest assembly, starting at the front left and right corners.
- Moving the base cover from left to right, release the clips securing the base cover to the palm-rest assembly.
- Lift the base cover from the palm-rest assembly.

## Step 2 — Remove the old battery



- Ensure that the battery cable is disconnected from the system board.
- Remove the four screws (M2x2) that secure the battery to the palm-rest assembly
- Remove the screw (M1.6x4) that secures the battery to the palm-rest assembly.
- Lift the battery off the palm-rest assembly.
- Turn the computer over, open the display, and press the power button for about 5 seconds to ground the computer.

### Step 3 — Insert the new battery



- Align the screw holes on the battery with the screw holes on the palm-rest assembly.
- Replace the four screws (M2x2) that secure the battery to the palm-rest assembly.
- Replace the screw (M1.6x4) that secures the battery to the palm-rest assembly

### Step 4 — Reattach base case



- Align the screw holes on the base cover with the screw holes on the palm-rest assembly and slide in the base cover into place.
- Replace the eight screws (M2x3, Torx) that secure the base cover to the palm-rest assembly

Congratulations, you're all done!