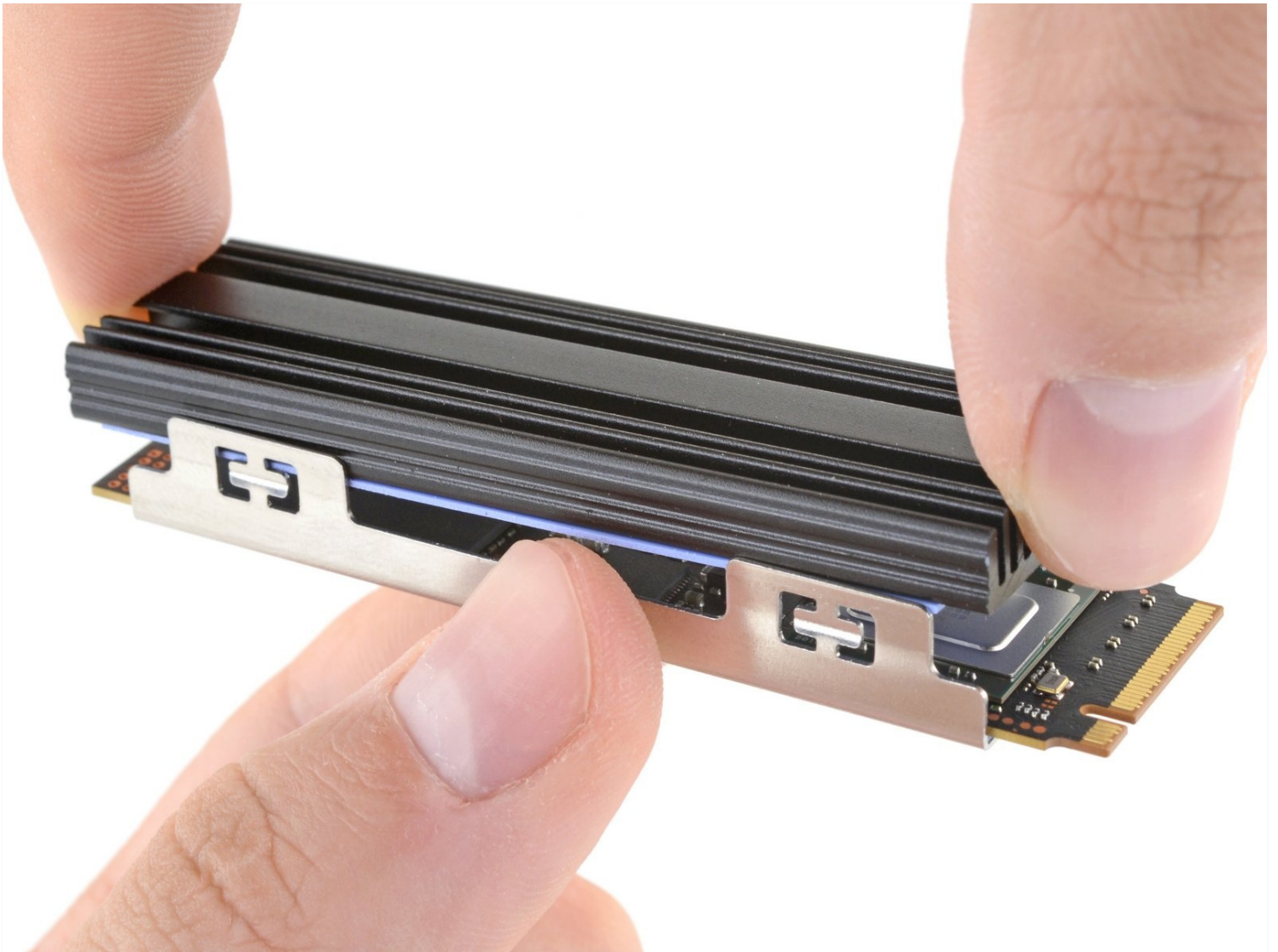




How to Install a Heatsink on an M.2 SSD

Use this guide to install a heatsink onto an...

Written By: Carsten Frauenheim



INTRODUCTION

Use this guide to install a heatsink onto an M.2 2280 blade-style SSD.

If you plan on using your SSD in a PlayStation 5, make sure it's compatible with [Sony's specifications](#).

TOOLS:

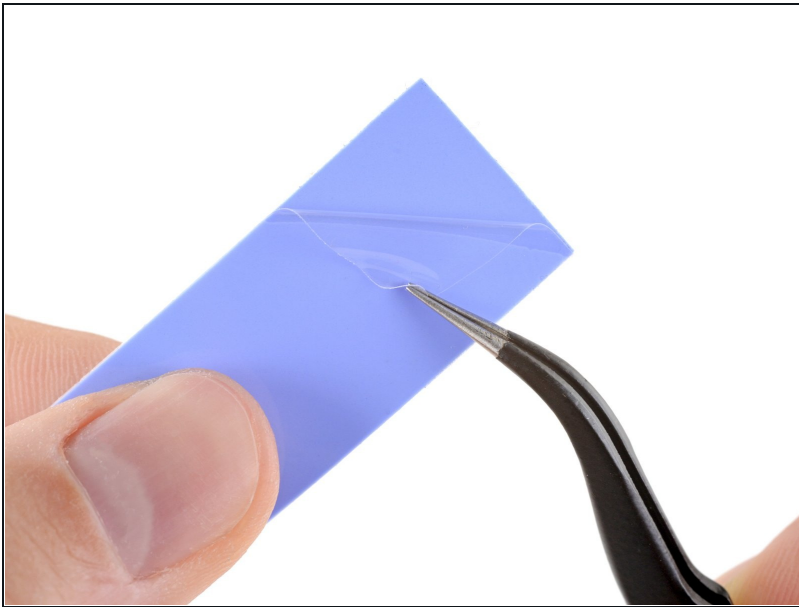
[Tweezers](#) (1)


PARTS:

[Crucial P5 Plus PCIe M.2 2280SS SSD](#)
(1)

[M.2 NVMe Heat Sink](#) (1)

Step 1 — Prepare the first thermal pad



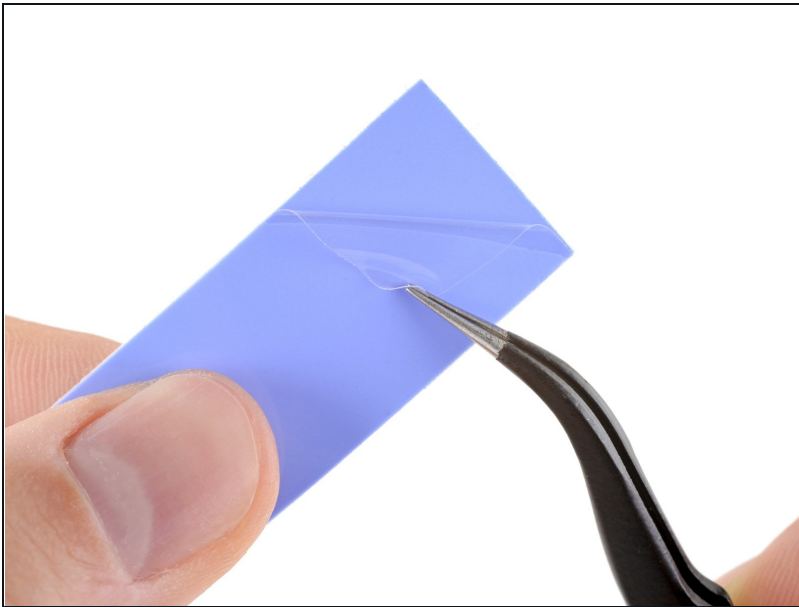
-  The heatsink uses thermal pads to dissipate heat from either side of the blade SSD. The thermal pads may come with plastic liners on each side, so make sure all are removed before use.
- Use a pair of tweezers to peel one side of protective film away from one of the thermal pads.

Step 2 — Install the first thermal pad



- Align the exposed side of the thermal pad with the bottom tray section of the heatsink assembly.
- Lay the thermal pad down so it covers the tray evenly.
- Use your finger to lightly press down on the thermal pad to adhere it to the surface.

Step 3 — Prepare the second thermal pad



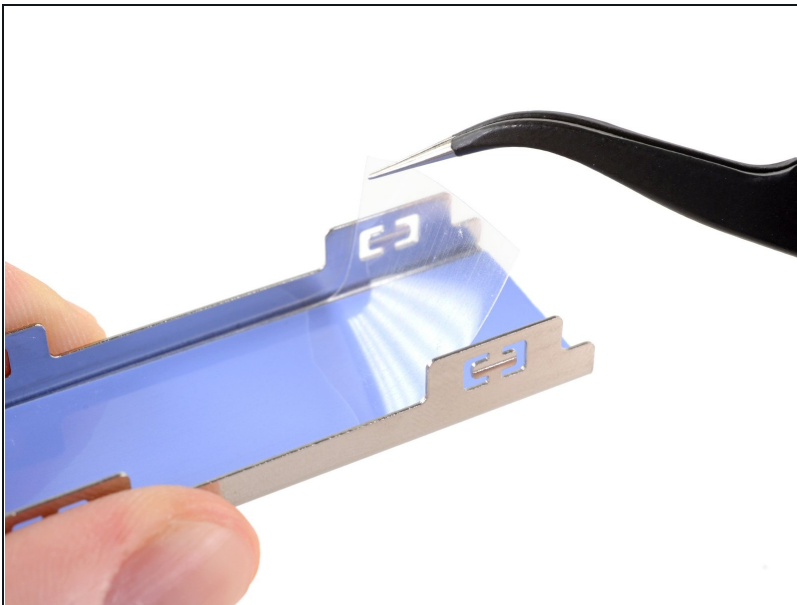
- Use a pair of tweezers to peel one side of protective film away from the remaining thermal pad.

Step 4 — Install the second thermal pad



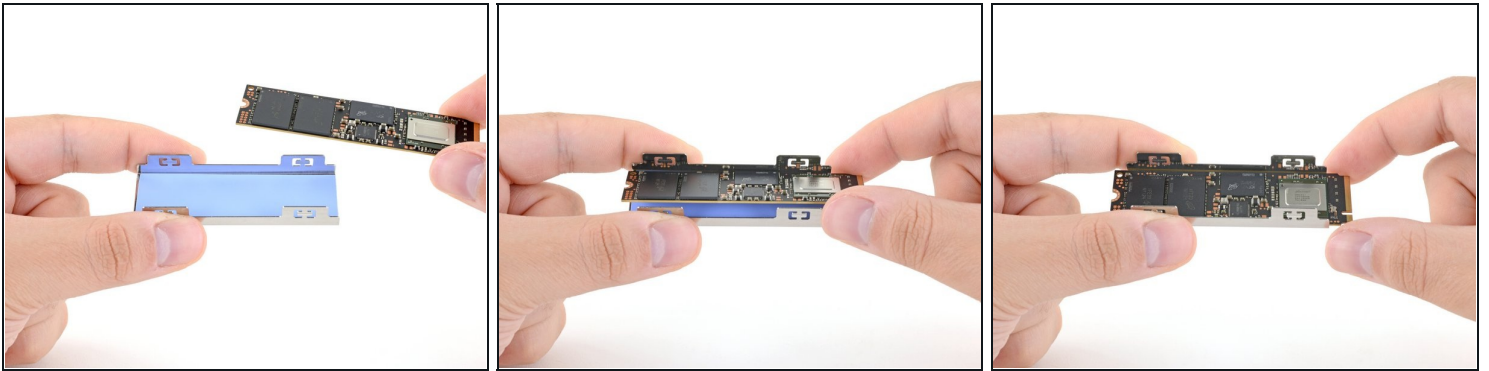
- Align the exposed side of the thermal pad with the top section of the heatsink.
- Lay the thermal pad down so it covers the top section evenly.
- Use your finger to lightly press down on the thermal pad to adhere it to the surface.

Step 5 — Remove the bottom thermal pad liner



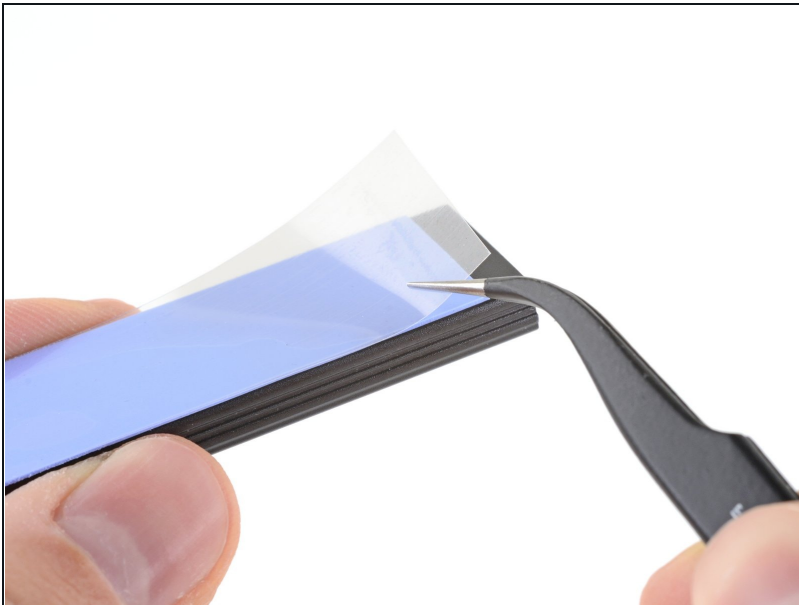
- Use a pair of tweezers to remove the plastic liner from the thermal pad in the tray.
- ① The thermal pad might lift up from the tray as the liner is removed—this is normal. Use your finger to keep the pad in the tray.

Step 6 — Lay the SSD in the tray



- Lay the M.2 SSD into the tray, the side with the most chips facing up.
- ⓘ Make sure the SSD is centered in the tray. The tray shouldn't cover the contacts or the screw cutout.

Step 7 — Remove the top thermal pad liner



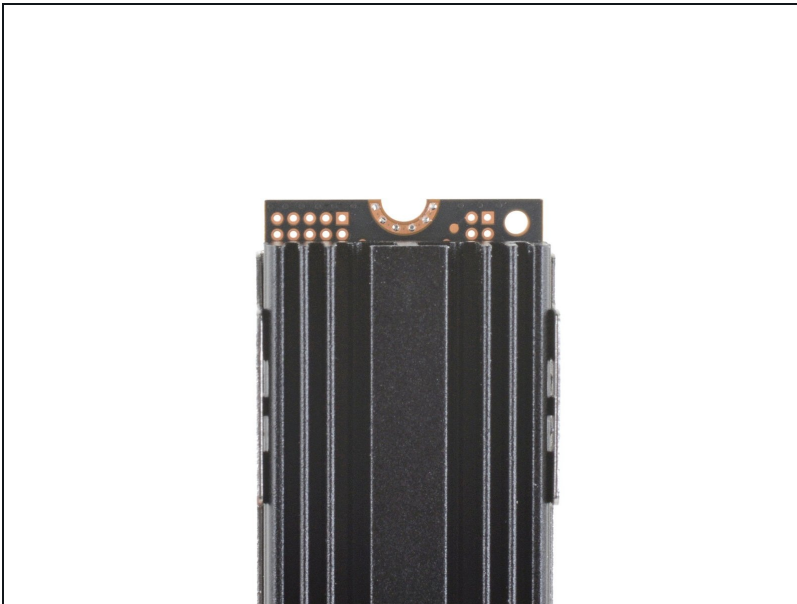
- Use a pair of tweezers to remove the plastic liner from the thermal pad on the heatsink's top section.
- ⓘ The thermal pad might lift up from the heatsink as the liner is removed—this is normal. Use your finger to keep the pad in place.

Step 8 — Snap the heatsink in place



- Align the top heatsink section over the SSD and the tray.
- Firmly press the two halves together. You'll feel it "snap" into place.

Step 9 — Check the alignment



- ① For the SSD to fit in a desktop PC or a PlayStation 5, the heatsink needs to be centered on the SSD.
- Make sure that the heatsink is close to the screw cutout but doesn't overhang it.
- If you're having trouble installing your SSD, you may have to slightly adjust the heatsink's position.
- Use your fingers to slide the SSD between the two halves of the heatsink assembly until fitment is just right.

Take your e-waste to an [R2 or e-Stewards certified recycler](#).

Installation didn't go as planned? Check out our [Computer Hardware Answers community](#) or [PlayStation 5 Answers community](#) for troubleshooting help.