



Toaster Made by Design model KT-3215 Teardown

This guide is a step-by-step teardown of a...

Written By: Mallory



INTRODUCTION

This guide is a step-by-step teardown of a Toaster Made by Design model KT-3215. The purpose of the guide is to provide a look into the internals of the toaster. This teardown is not intended to be followed for repair.



TOOLS:

- [Spudger](#) (1)
 - [TA 2.3 Screwdriver](#) (1)
 - [Mini Long-Nose Pliers](#) (1)
 - [Mini Needle Pliers](#) (1)
 - [Phillips #2 x 4 in. Screwdriver](#) (1)
-

Step 1 — Toaster Made by Design model KT-3215 Teardown



- This is what a Toaster Made by Design model KT-3215 should look like before the teardown has started.

Step 2



⚠ Make sure the toaster is unplugged and not near an electrical outlet.

- Remove the crumb tray, which is located on the back of the toaster. Slide the crumb tray directly out. No lifting or twisting is required.

Step 3



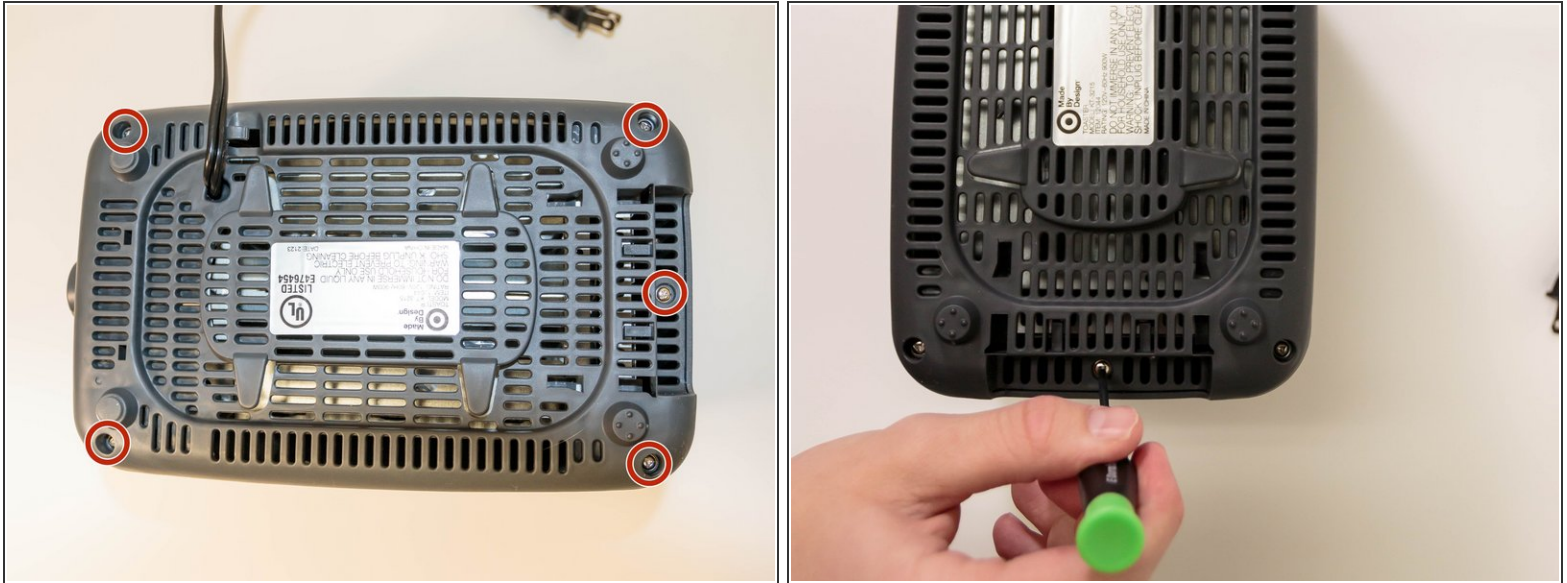
- Use your index finger and middle finger to grip the loading lever, then pull towards your body to remove the lever. A fair amount of force may be required.

Step 4



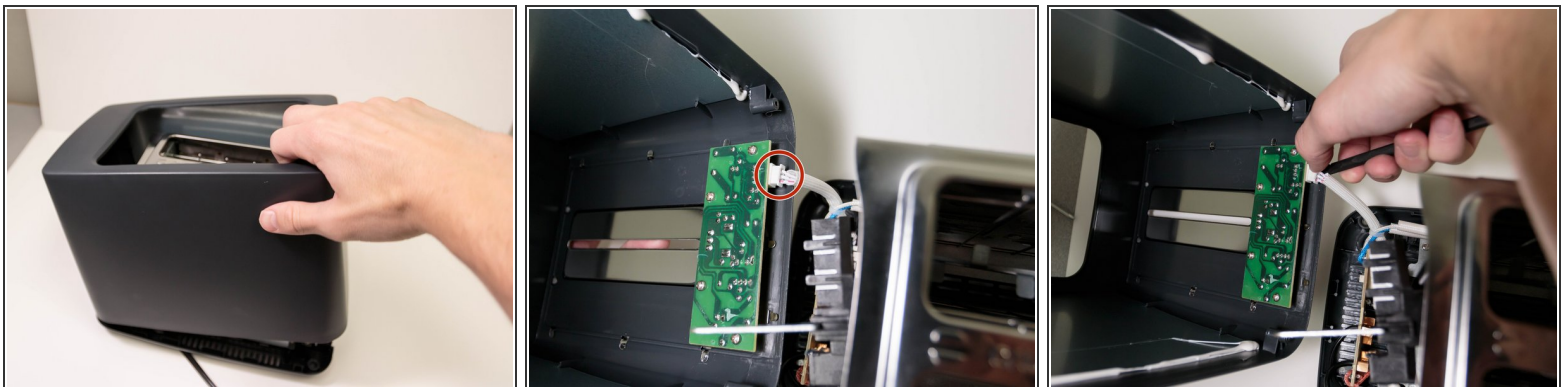
- Flip the toaster upside down.
- Use a spudger to remove the two rubber feet.

Step 5



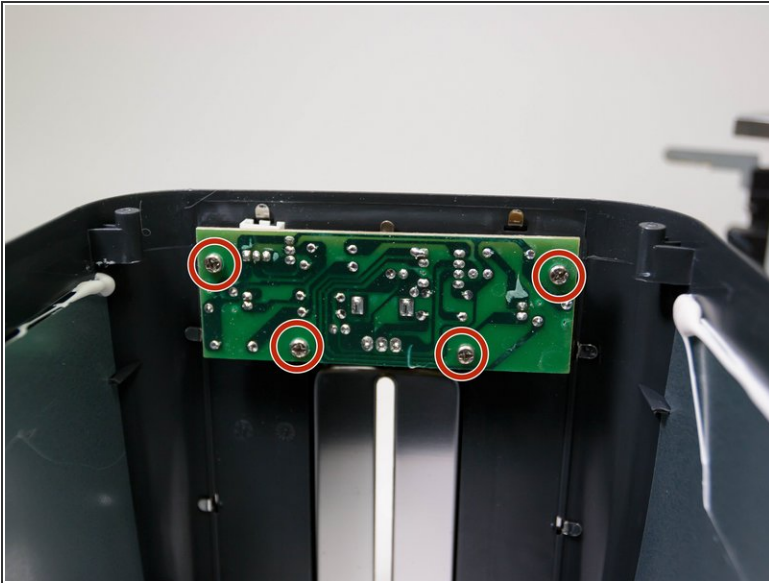
- Use a TA 2.3 screwdriver to unscrew the five triangular screws on the bottom of the toaster.

Step 6



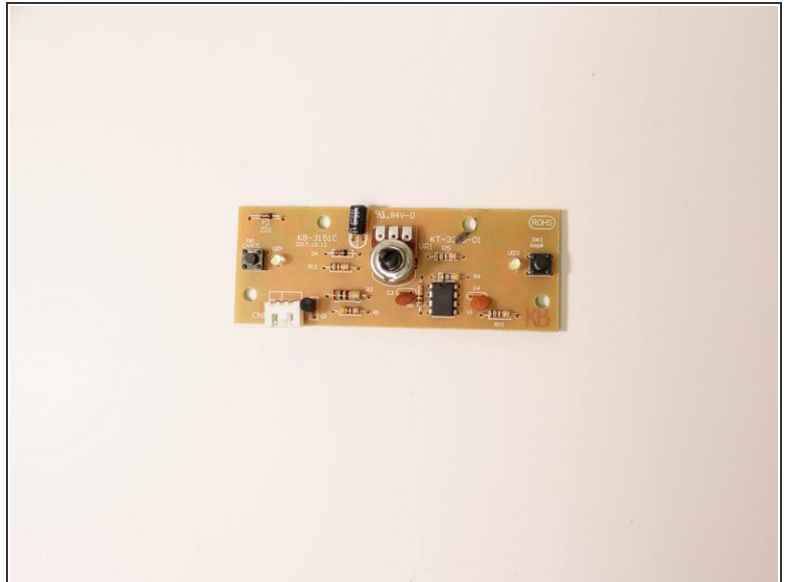
- Lift the toaster casing. This will expose the power splitter cable (white cable).
- Use a spudger and your thumb, to remove the power splitter cable.

Step 7



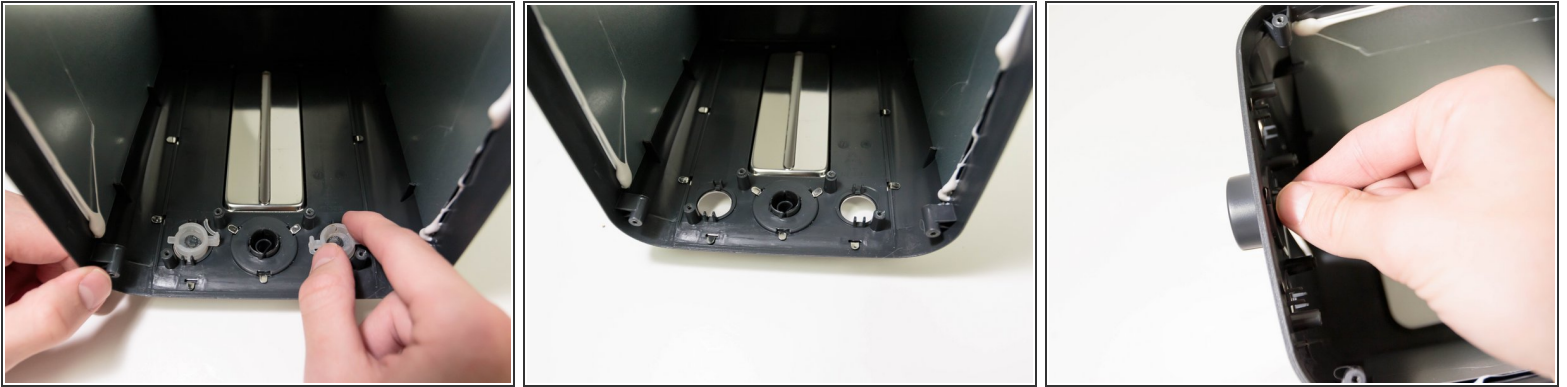
- Place the toaster casing upside down.
- Use a Phillips #2 x 4in. screwdriver to remove the four 0.25 in. Phillips head screws. These screws are securing the control board for the buttons and timer knob.

Step 8



- Remove the control board from the toaster casing.

Step 9



- Pull the bagel button and cancel button off of the toaster casing. These buttons require little force to remove.
- Detach the timer knob by pinching the sides of the timer knob and pushing towards the exterior of the toaster casing.

Step 10



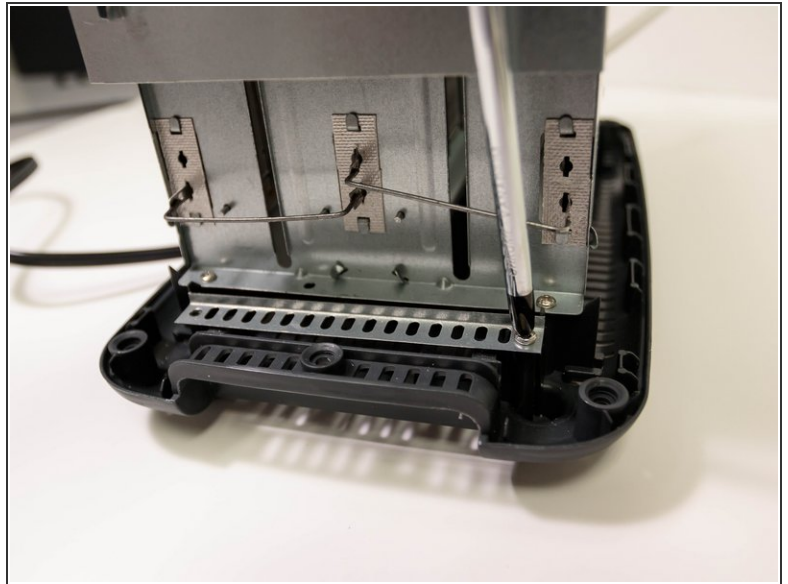
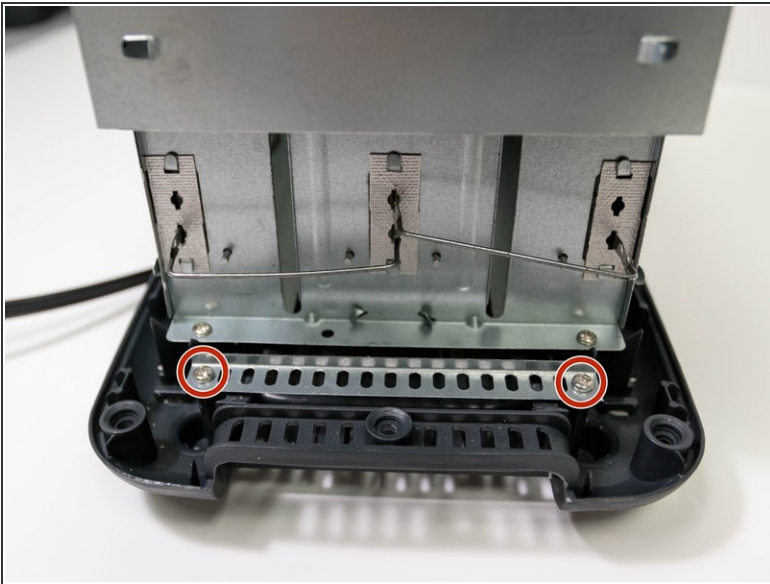
- Use a pair of mini long-nose pliers to remove the spring components from the timer knob.

Step 11



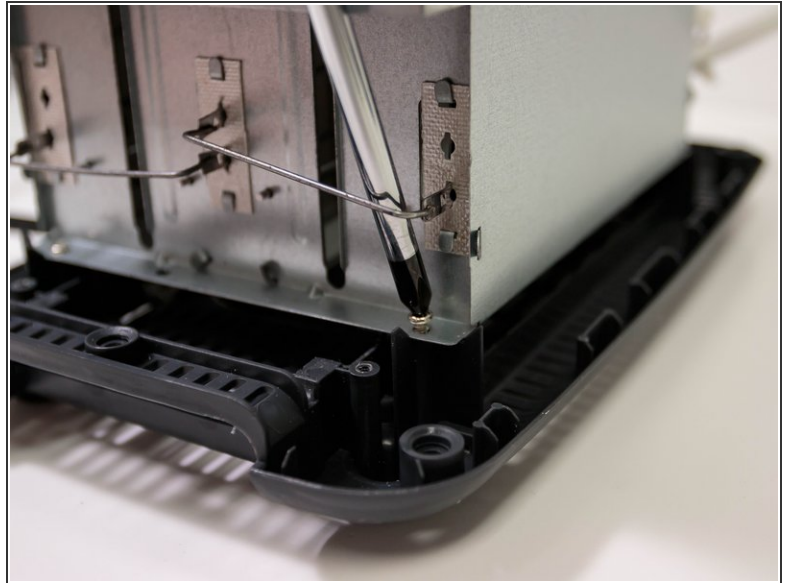
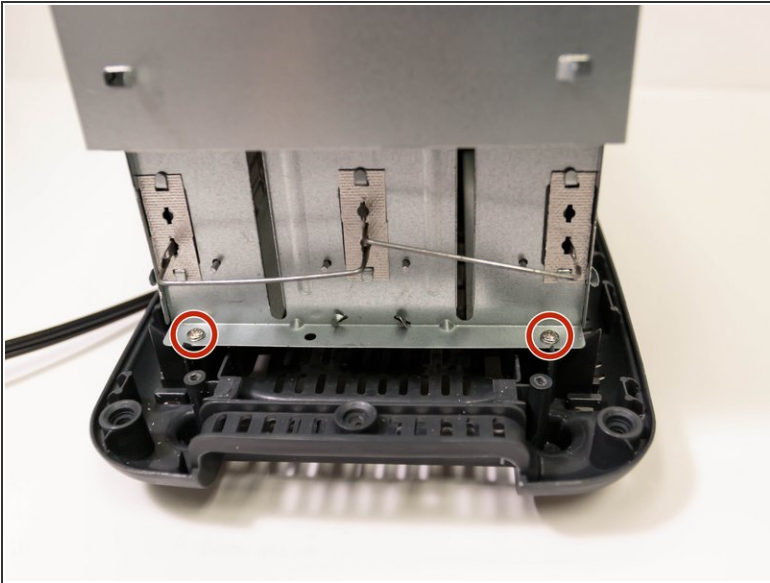
- Use a pair of mini long-nose pliers to bend the metal lips located on the back of the toaster. The metal lips should be facing towards you after you have bent them.
- Remove the waveguide cover (rectangular tan cover) on the back of the toaster.

Step 12



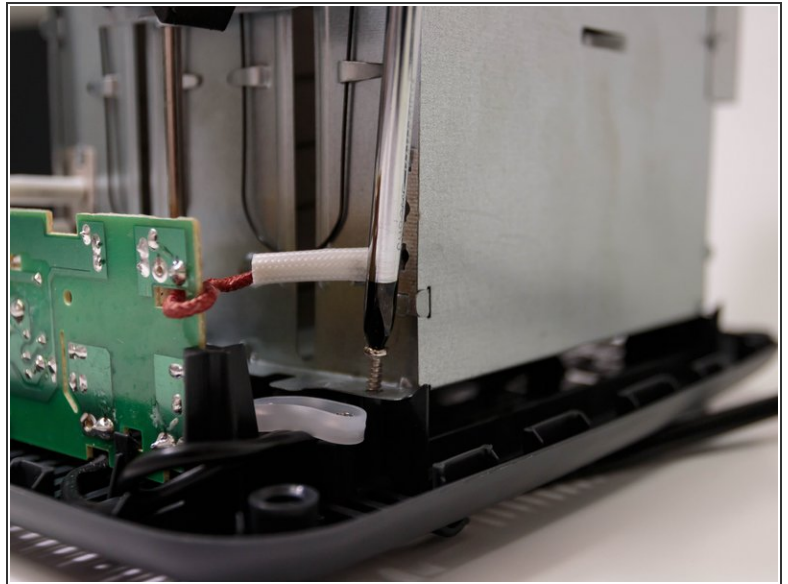
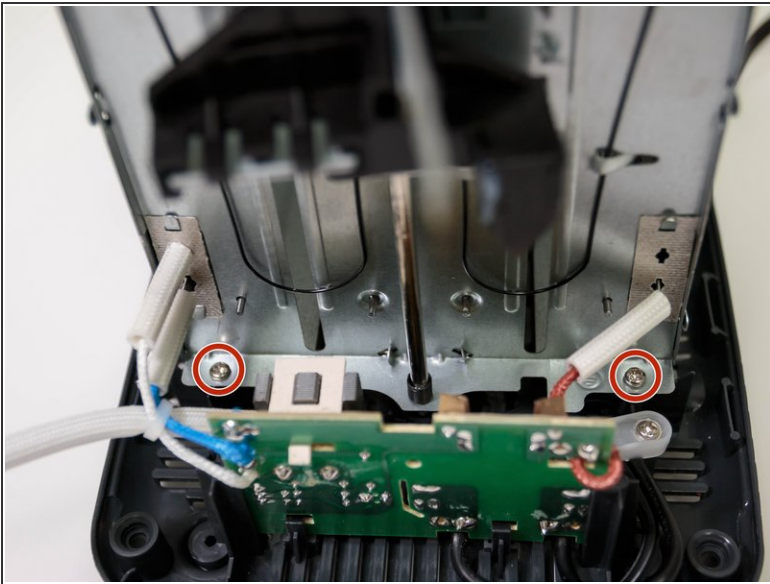
- Use a Phillips 2 x 4in. screwdriver to remove the two 0.25 in. Phillips head screws. This will allow you to remove the metal bracket.

Step 13



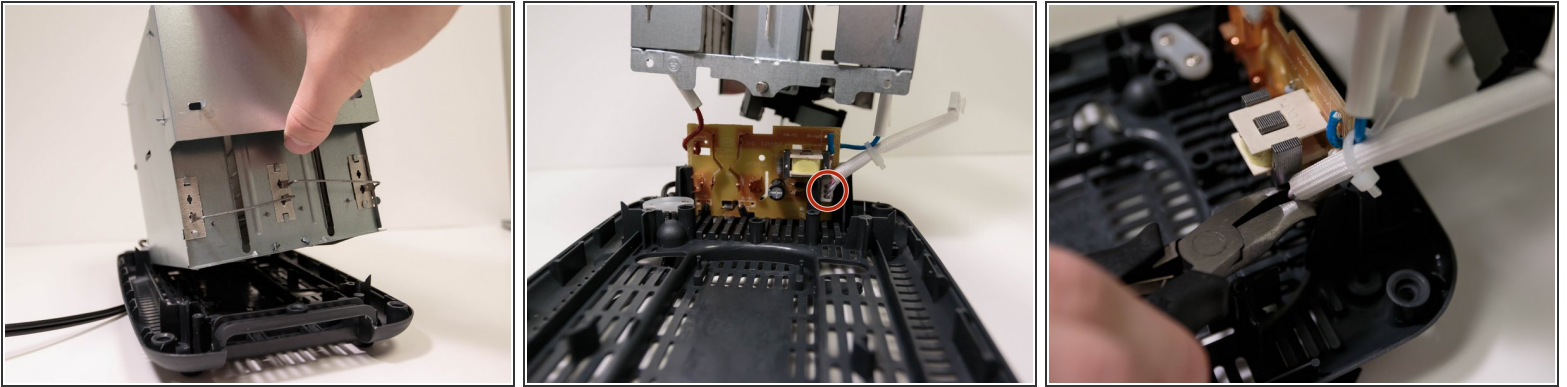
- Use a Phillips 2 x 4in. screwdriver to remove the two 0.25 in. Phillips head screws. These screws secure the back of the internal housing of the toaster.

Step 14



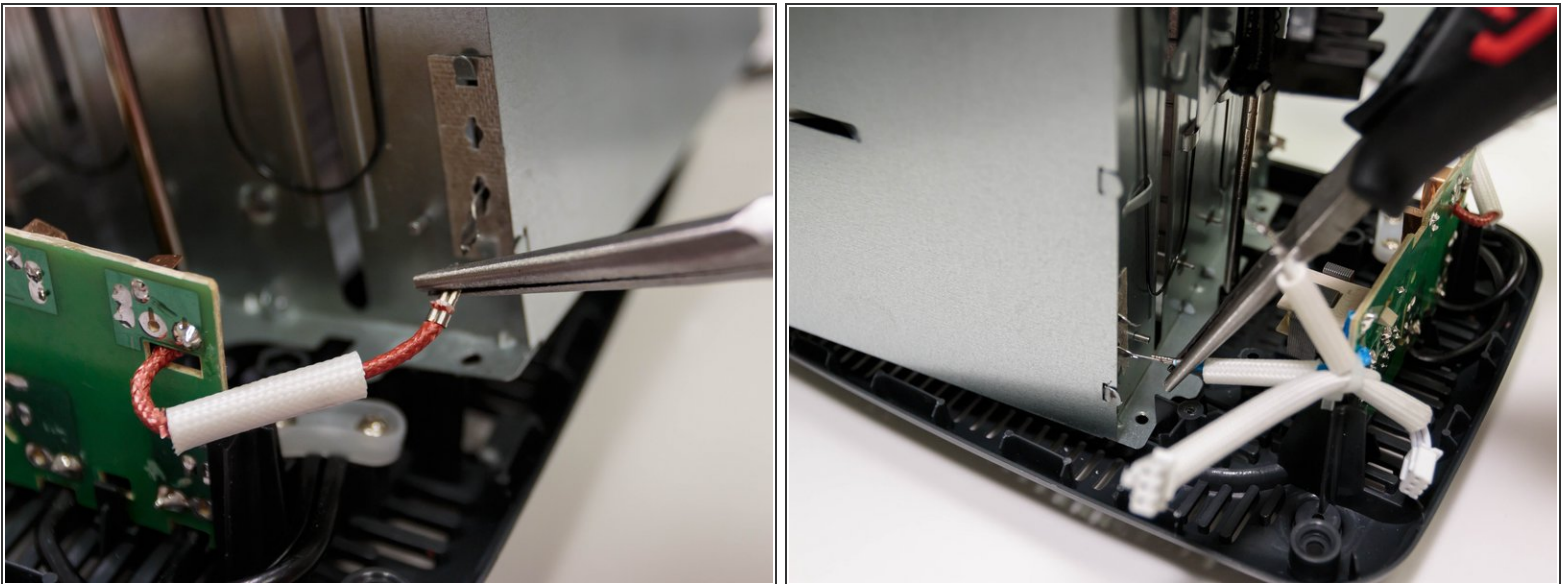
- Use a Phillips 2 x 4in. screwdriver to remove the two 0.25 in. Phillips head screws. These screws secure the front of the internal housing of the toaster.

Step 15



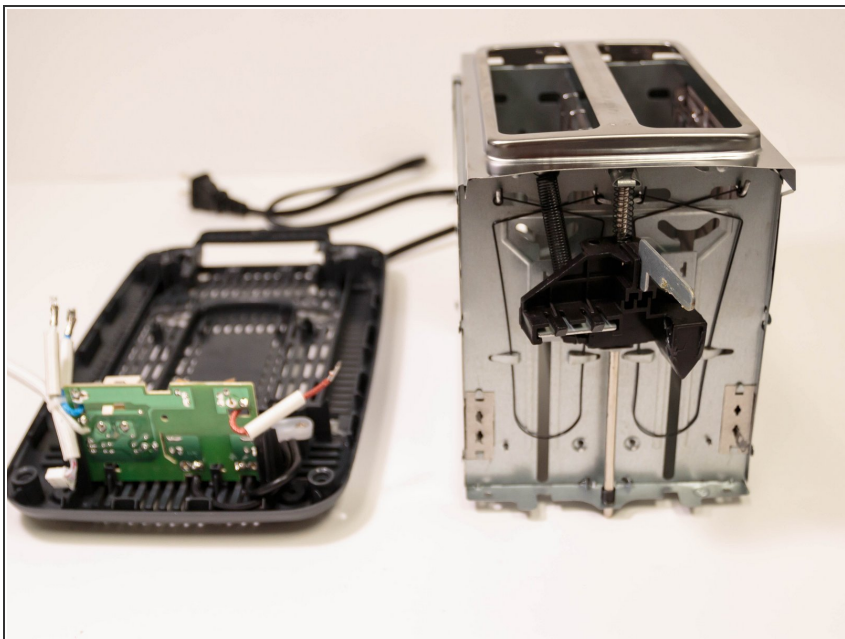
- Lift the internal housing.
- Use a pair of mini needle pliers to remove the other end of the power splitter cable.

Step 16



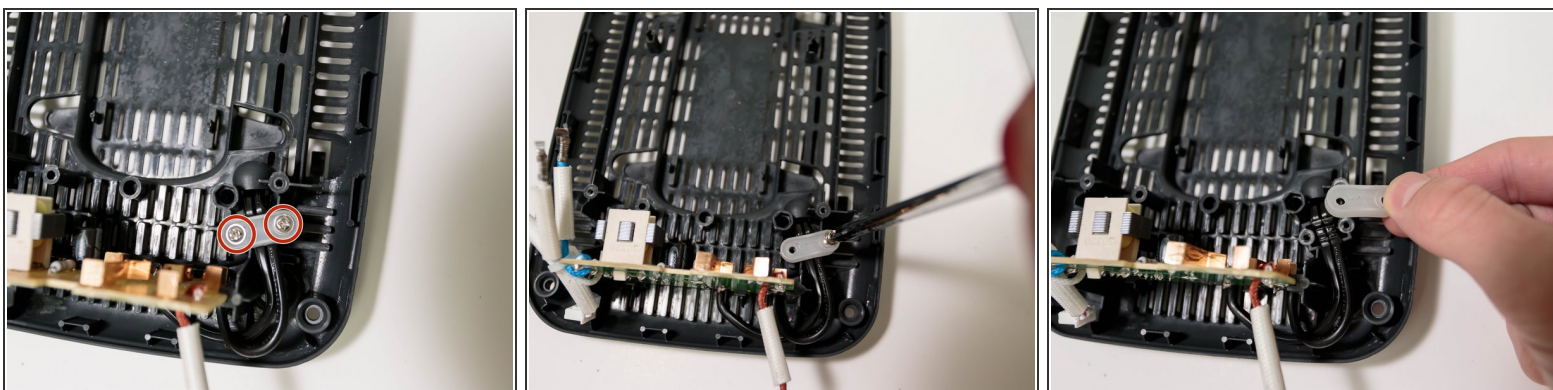
- Place the internal housing flat on the base of the toaster.
- Use a pair of mini long-nose pliers to detach the wires that are welded to the internal housing. This may require some force.

Step 17



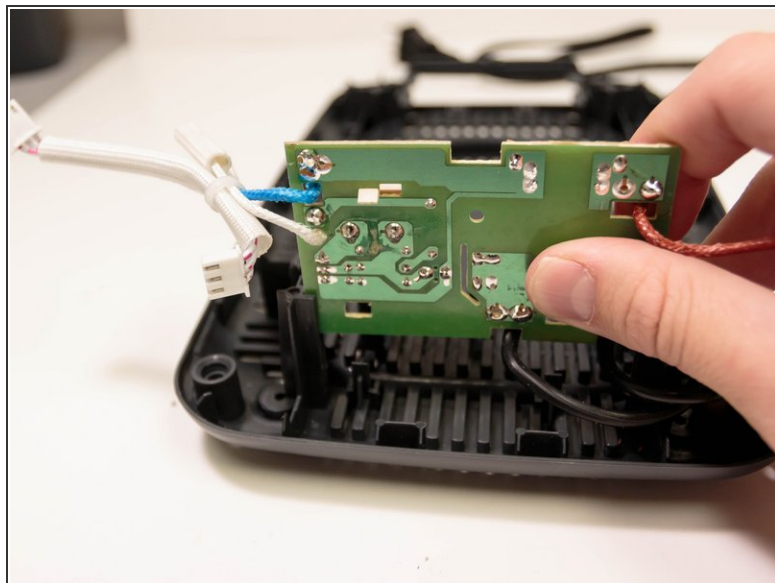
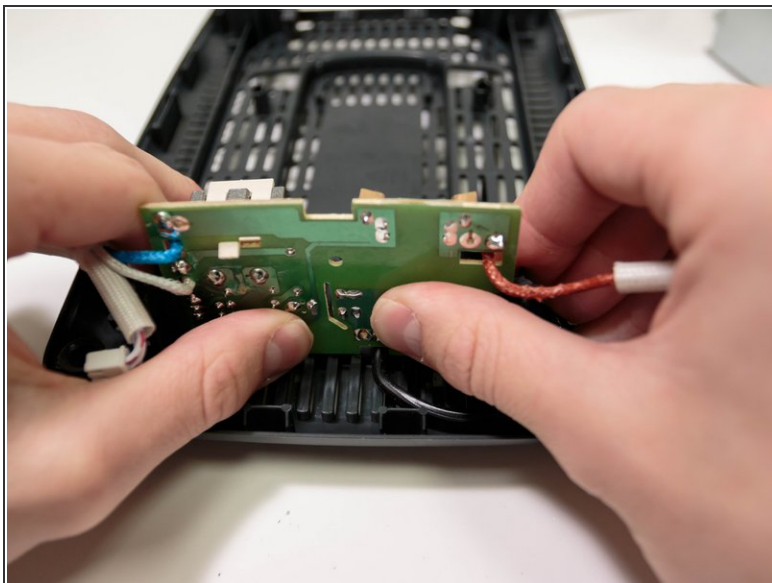
- Remove the internal housing from the base of the toaster.

Step 18



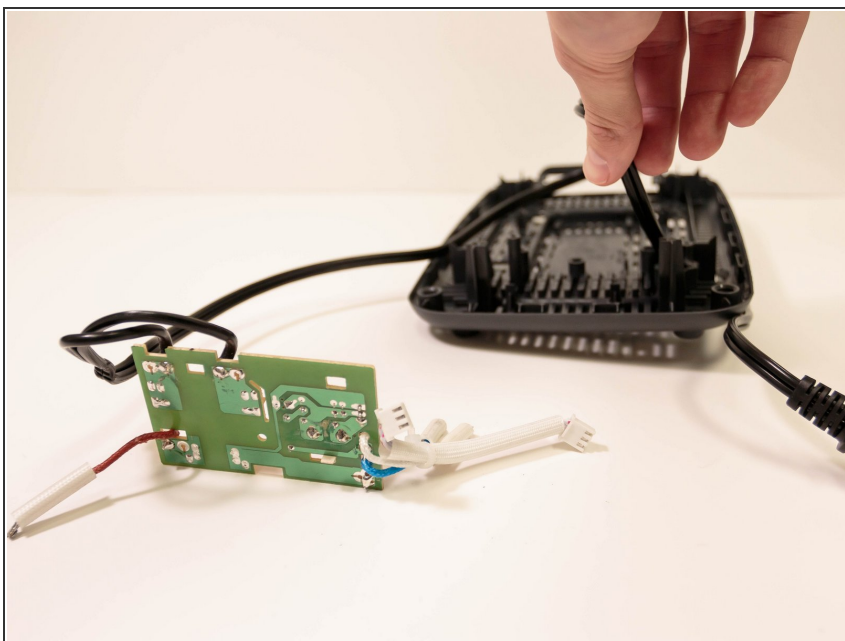
- Use a Phillips #2 x 4in. screwdriver to remove the two 0.25 in. Phillips head screws from the plastic fastener.
- Remove the plastic fastener.

Step 19



- Remove the main electric controller by gently pushing forward on it then raising it up.

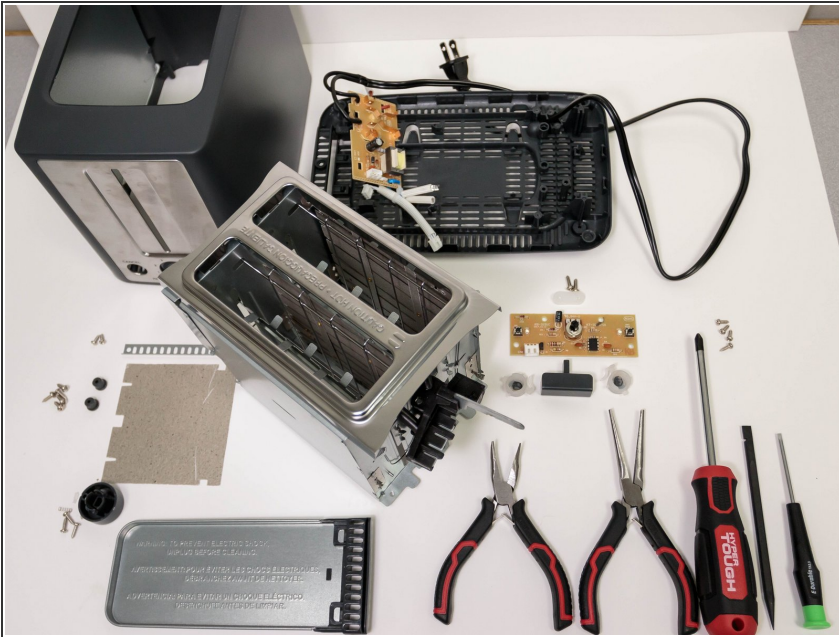
Step 20



- Pull the power cord through the base of the toaster. This will allow separation between the base of the

toaster and the main electric controller.

Step 21 — Completed Teardown



- The teardown of a Toaster Made by Design Model model KT-3215 is now complete.