



iPhone 13 mini Screen Replacement

If your iPhone 13 mini screen is cracked, not...

Written By: Adriana Zwink



INTRODUCTION

If your iPhone 13 mini screen is cracked, not responding to touch, or not showing a picture when your phone is powered on, use this guide to restore your iPhone to working order with a new screen, a.k.a. display assembly.

The iPhone 13 disables the Face ID function when you replace the screen. Due to a microchip that is soldered to the display and transmits the serial number of the individual iPhone, the Face ID function gets lost.

Note: True Tone functionality is disabled after a screen replacement, even when using an original Apple screen. Additionally, your iPhone may temporarily show a warning about the “genuineness” of the display.

You'll need replacement adhesive to reattach components when reassembling the device.



TOOLS:

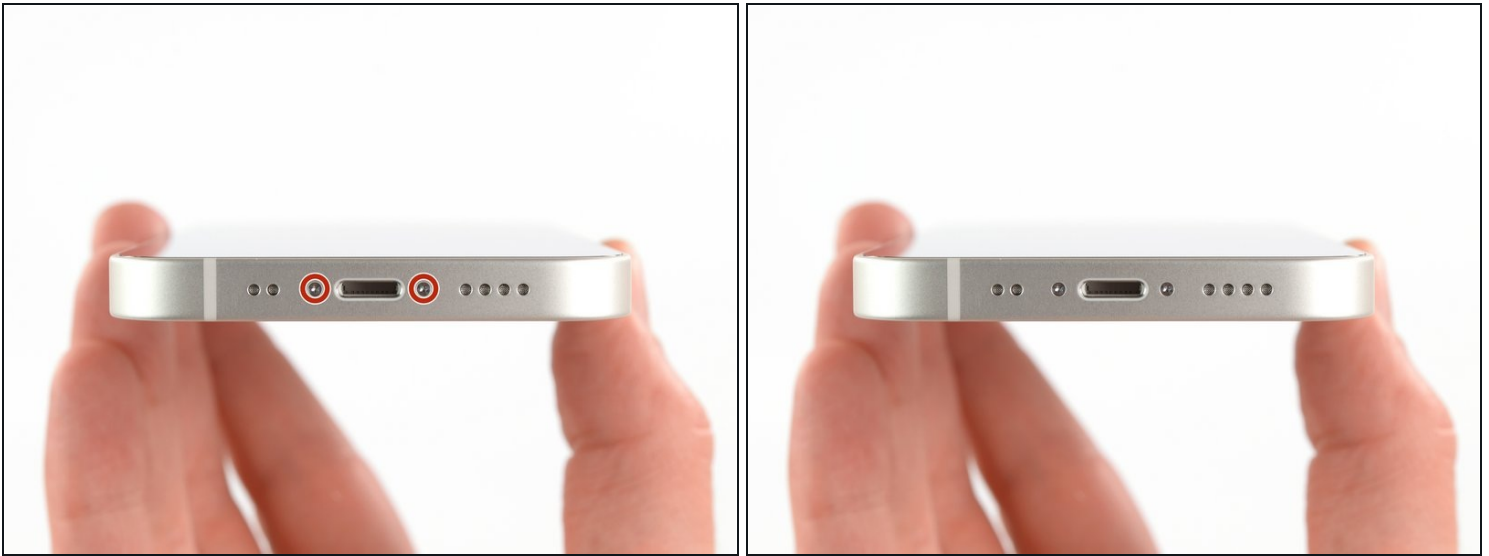
- [Anti-Clamp](#) (1)
- [Hair Dryer](#) (1)
- [Heat Gun](#) (1)
- [P2 Pentalobe Screwdriver iPhone](#) (1)
- [iOpener](#) (1)
- [iFixit Opening Picks \(Set of 6\)](#) (1)
- [Suction Handle](#) (1)
- [ESD Safe Blunt Nose Tweezers](#) (1)
- [Spudger](#) (1)
- [Phillips PH000 Screwdriver](#) (1)
- [Tri-point Y000 Screwdriver](#) (1)



PARTS:

- [iPhone 13 mini Screen](#) (1)
- [iPhone 13 mini Display Assembly Adhesive](#) (1)
- [NuGlas Tempered Glass Screen Protector for iPhone 13 mini](#) (1)
- [iPhone 13 mini Test Cable for Screen and Digitizer](#) (1)

Step 1 — Remove the screws



⚠ For your safety, discharge the battery below 25% before disassembling your phone. This reduces the risk of a dangerous thermal event if the battery is accidentally damaged during the repair. If your battery is swollen, [take appropriate precautions](#).

- Power off your iPhone before beginning disassembly.
- Remove the two 6.8 mm-long pentalobe P2 screws at the bottom edge of the iPhone.
- ⓘ Opening the iPhone's display will compromise its waterproof seals. Have replacement seals ready before you proceed past this step, or take care to avoid liquid exposure if you reassemble your iPhone without replacing the seals.

Step 2 — Mark your opening picks



- ① If inserted too far, an opening pick can damage your device. Follow this step to mark your pick and prevent damage.
- Measure 3 mm from the tip and mark the opening pick with a permanent marker.
 - ① You can also mark the other corners of the pick with different measurements.
 - ① Alternatively, [tape a coin to a pick](#) 3 mm from the tip.

Step 3 — Tape over any cracks



- ① If your iPhone has a cracked screen, keep further breakage contained and prevent bodily harm during your repair by taping over the glass.
- Lay overlapping strips of clear packing tape over the iPhone's screen until the whole face is covered.
- ⚠ Wear safety glasses to protect your eyes from any glass shaken free during the repair.
- If you can't get the suction cup to stick in the next few steps, fold a strong piece of tape (such as duct tape) into a handle and lift the screen with that instead.
- ① If all else fails, you can superglue the suction cup to the screen.

Step 4 — Anti-Clamp instructions



- ① The next three steps demonstrate the [Anti-Clamp](#), a tool we designed to make the opening procedure easier. **If you aren't using the Anti-Clamp, skip down three steps for an alternate method.**
- ① For complete instructions on how to use the Anti-Clamp, [check out this guide](#).
- Pull the blue handle backwards to unlock the Anti-Clamp's arms.
- Slide the arms over either the left or right edge of your iPhone.
- Position the suction cups near the bottom edge of the iPhone—one on the front, and one on the back.
- Squeeze the cups together to apply suction to the desired area.
- ① If you find that the surface of your iPhone is too slippery for the Anti-Clamp to hold onto, you can [use tape](#) to create a grippier surface.

Step 5



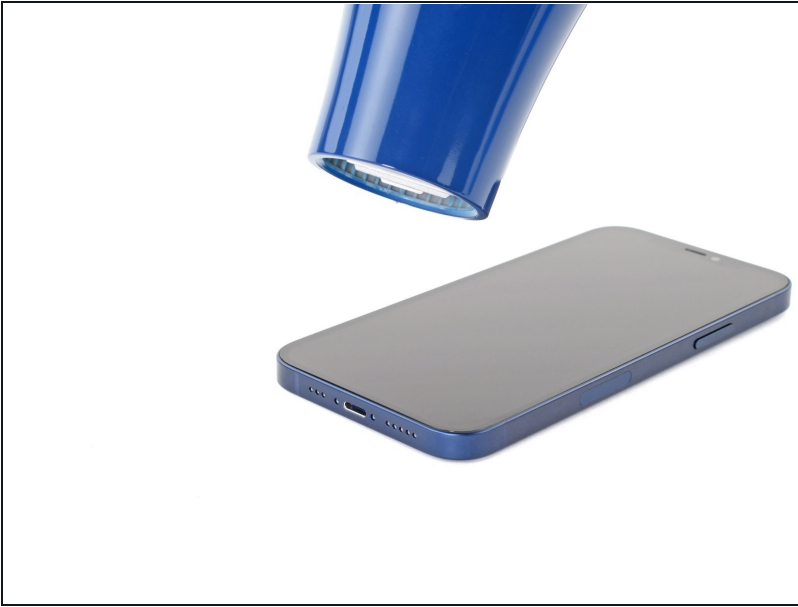
- Pull the blue handle forwards to lock the arms.
- Turn the handle clockwise 360 degrees or until the cups start to stretch.
- Make sure the suction cups remain aligned with each other. If they begin to slip out of alignment, loosen the suction cups slightly and realign the arms.

Step 6



- Support your iPhone on something sturdy such as a hardcover book so it rests hands-free and parallel to the ground; this makes it easier to work with in the following steps.
 - Use a hair dryer to heat along the bottom edge of the iPhone. The screen should feel slightly too hot to touch.
 - ⓘ For complete instructions on how to use a hair dryer, [check out this guide](#).
 - Wait one minute to give the adhesive a chance to release and present an opening gap.
 - Insert an opening pick under the screen's plastic bezel when the Anti-Clamp creates a large enough gap.
 - ⓘ If the Anti-Clamp doesn't create a sufficient gap, apply more heat to the area and rotate the handle a quarter turn.
- ⚠ Don't crank more than a quarter turn at a time, and wait one minute between turns. Let the Anti-Clamp and time do the work for you.**
- **Skip the next three steps.**

Step 7 — Heat the bottom edge



- Use a [hair dryer](#) or a [heat gun](#) to heat the bottom edge of the iPhone for 90 seconds or until the screen is slightly too hot to touch.

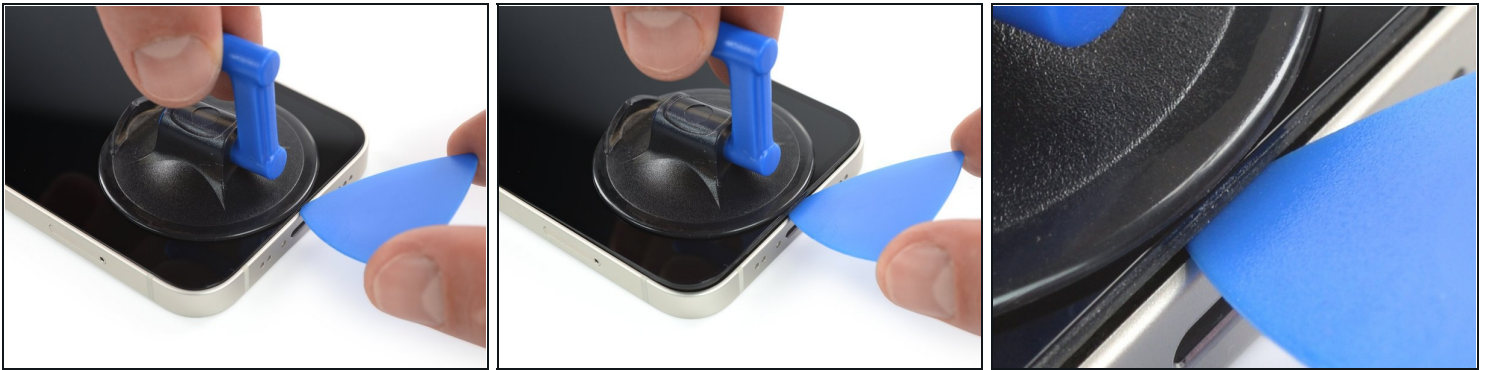
⚠ Never leave your hair dryer in one spot for an extended period of time.

Step 8 — Apply a suction handle



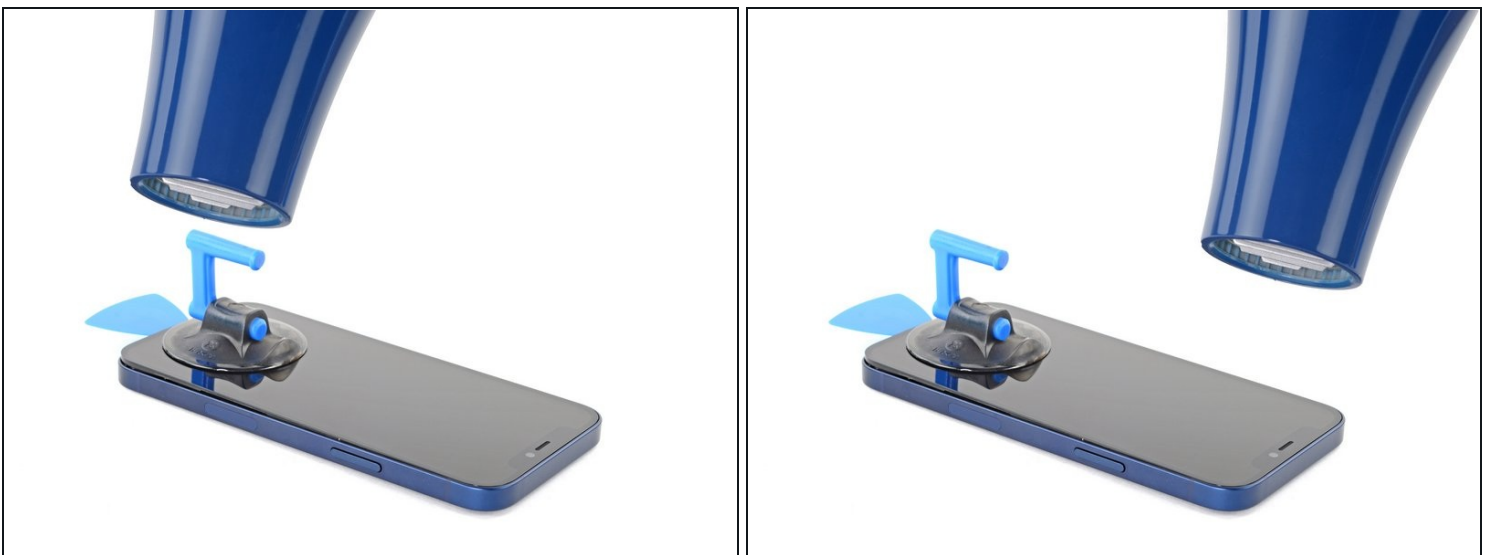
- If you're using a single suction handle, apply it to the bottom edge of the phone, as close to the edge as possible.

Step 9 — Insert an opening pick



- Pull up on the suction cup with firm, constant pressure to create a slight gap between the screen and the frame.
- Insert an opening pick into the gap under the screen's plastic bezel.
- ⓘ The watertight adhesive holding the screen in place is very strong; creating this initial gap takes a significant amount of force. If you're having a hard time opening a gap, apply more heat, and gently rock the screen up and down to weaken the adhesive until you create enough of a gap to insert your tool.

Step 10 — Heat the right edge



- Use a hair dryer to heat the right edge of the iPhone (the edge with the power button) for 90 seconds or until the screen is slightly too hot to touch.

Step 11 — Separate the right adhesive



- Slide the opening pick around the bottom right corner and along the right edge of the iPhone, slicing through the adhesive holding the display in place.
⚠ Don't insert your pick more than 3 mm, as you may damage internal components.
- Leave the pick in the top right corner before continuing.

Step 12 — Heat the top edge



- Use a hair dryer to heat the top edge of the iPhone for 90 seconds or until the screen is slightly too hot to touch.

Step 13 — Separate the top adhesive



- Slide the opening pick around the top right corner of the iPhone to separate the top adhesive.
⚠ Don't insert your pick more than 3 mm, as you may damage the top sensors.
- Leave the pick in the top left corner before continuing.

Step 14 — Heat the left edge



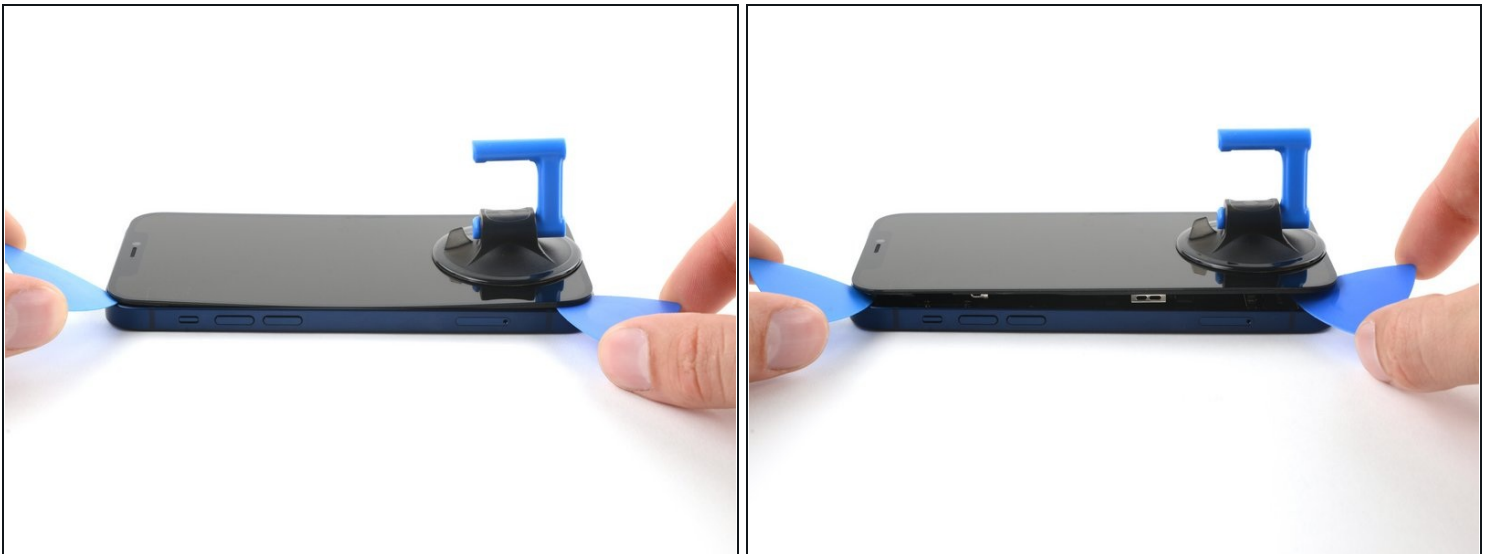
- Use a hair dryer to heat the left edge of the iPhone for 90 seconds or until the screen is slightly too hot to touch.

Step 15 — Screen information



⚠ There are delicate cables along the left edge of your iPhone. **Don't insert your pick here,** as you may damage the cables.

Step 16 — Separate the left adhesive



- Insert a second opening pick in the bottom left corner of the iPhone.
- Twist both picks simultaneously until the left edge clips release.
 - ⓘ Apply the twisting force gradually.
 - ⓘ If you're having trouble separating the adhesive, reheat the left edge.

Step 17 — Remove the suction cup(s)



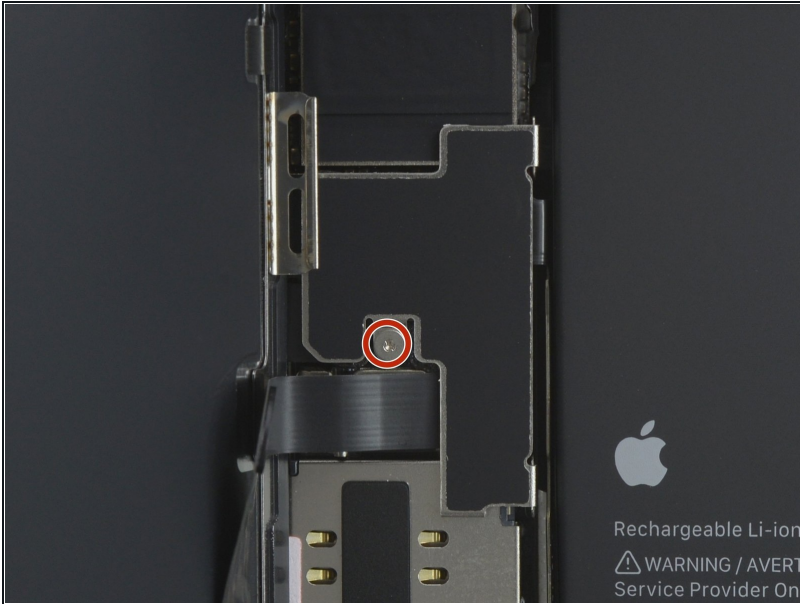
- Pull on the small nub on the suction cup to remove it from the front panel.

Step 18 — Open the iPhone mini



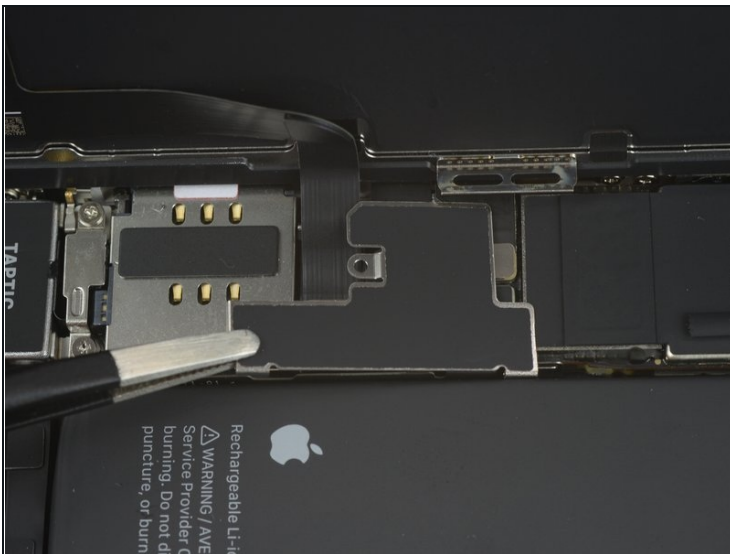
- Rotate your iPhone so the right edge faces you.
- Open the iPhone by swinging the display up from the right side, like the front cover of a book.
⚠ Don't try to fully separate the display yet, as several fragile ribbon cables still connect it to the iPhone's logic board.
- Lean the display against something to keep it propped up while you're working on the phone.
- ☑ During reassembly, lay the display in position, align the clips along the top edge, and carefully press the top edge into place before snapping the rest of the display down. If it doesn't click easily into place, check the condition of the clips around the perimeter of the display and make sure they aren't bent.

Step 19 — Unscrew the battery and display connector cover



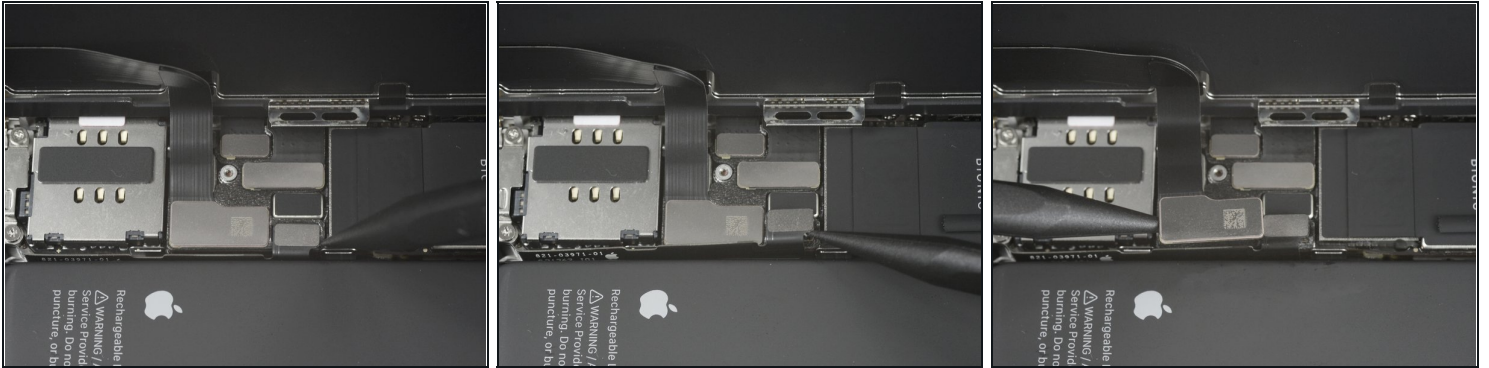
- Remove the 1.2 mm-long Y000 screw securing the battery and display connector cover.
 - Throughout this repair, [keep track of each screw](#) and make sure it goes back exactly where it came from to avoid damaging your iPhone.
- ☑ During reassembly, this is a good point to power on your iPhone and test all functions before you seal the display in place. Be sure to power your iPhone back down completely before you continue working.

Step 20 — Remove the cover



- Use a pair of tweezers to remove the battery and display connector cover.

Step 21 — Disconnect the battery and the OLED display cable



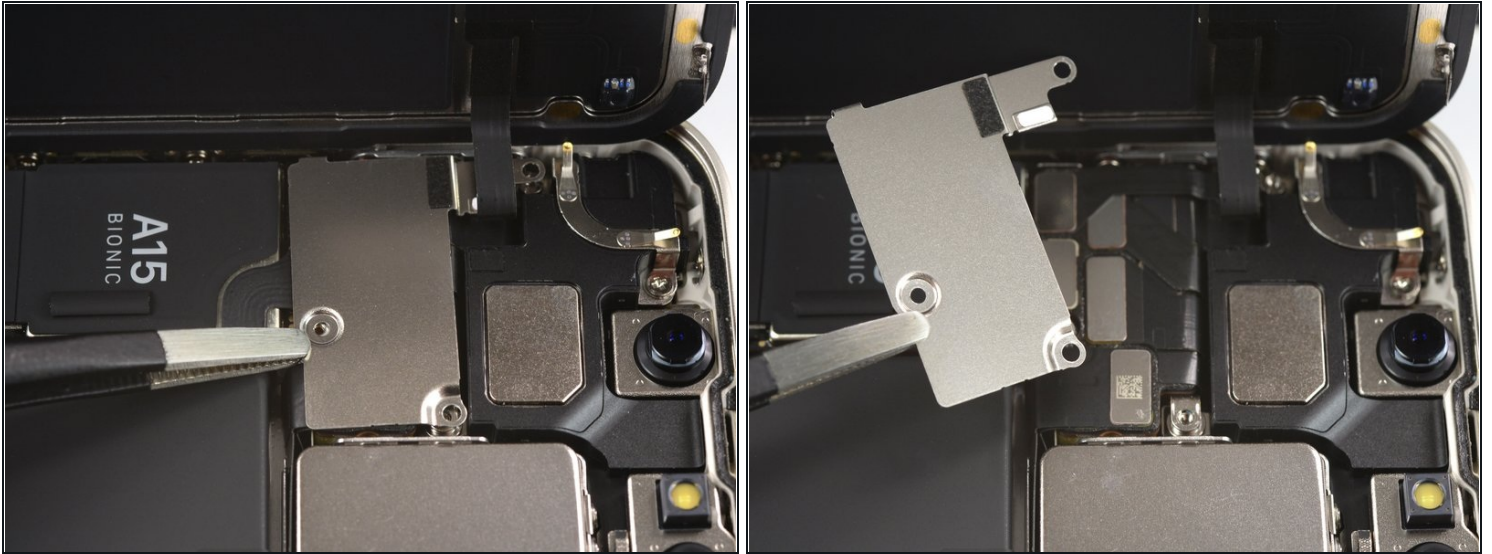
- Use a spudger to pry the battery and OLED panel cable connectors up from their sockets on the logic board.
 - ⓘ Try not to damage the black silicone seal surrounding this and other board connections. These seals provide extra protection against water and dust intrusion.
- Bend the connector slightly away from the logic board to prevent it from accidentally making contact with the socket and providing power to the phone during your repair.
- ☑ To re-attach [press connectors](#) like this one, carefully align and press down on one side until it clicks into place, then repeat on the other side. Do not press down on the middle. If the connector is misaligned, the pins can bend, causing permanent damage.

Step 22 — Unscrew the front sensor connector cover



- Remove the three screws (securing the front sensor assembly cover):
 - One PH000 1.4 mm-long screw
 - One Y000 1.8 mm-long screw
 - One Y000 1.2 mm-long screw

Step 23 — Remove the cover



- Use a pair of tweezers to remove the front sensor assembly connector cover.

Step 24 — Disconnect the front sensors



- Use a spudger to disconnect the front sensor assembly cable connector.

Step 25 — Remove the display assembly



- Remove the display assembly.
- ★ During reassembly, pause here if you wish to [replace the waterproof adhesive around the edges of the display](#).

Step 26 — Unscrew the metal cover



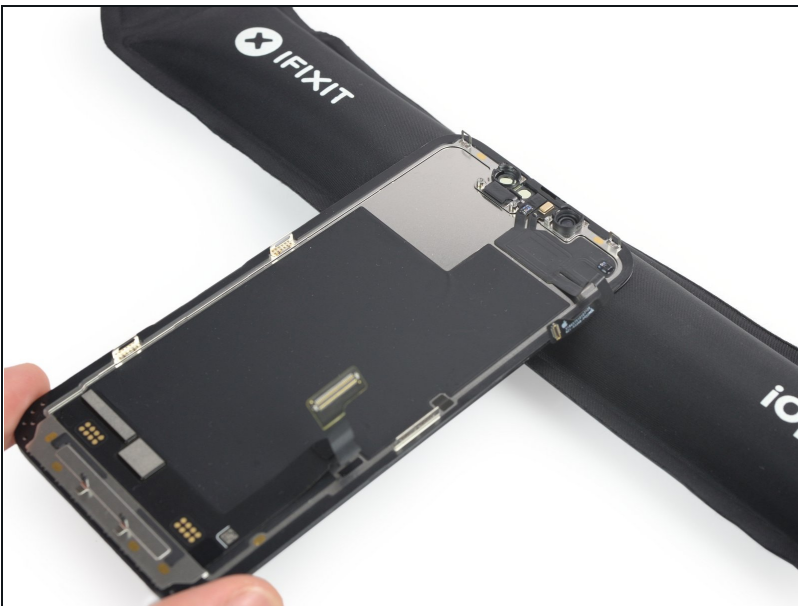
- Remove the three 1.4 mm-long tri-point Y000 screws securing the sensor assembly cover.

Step 27 — Remove the cover



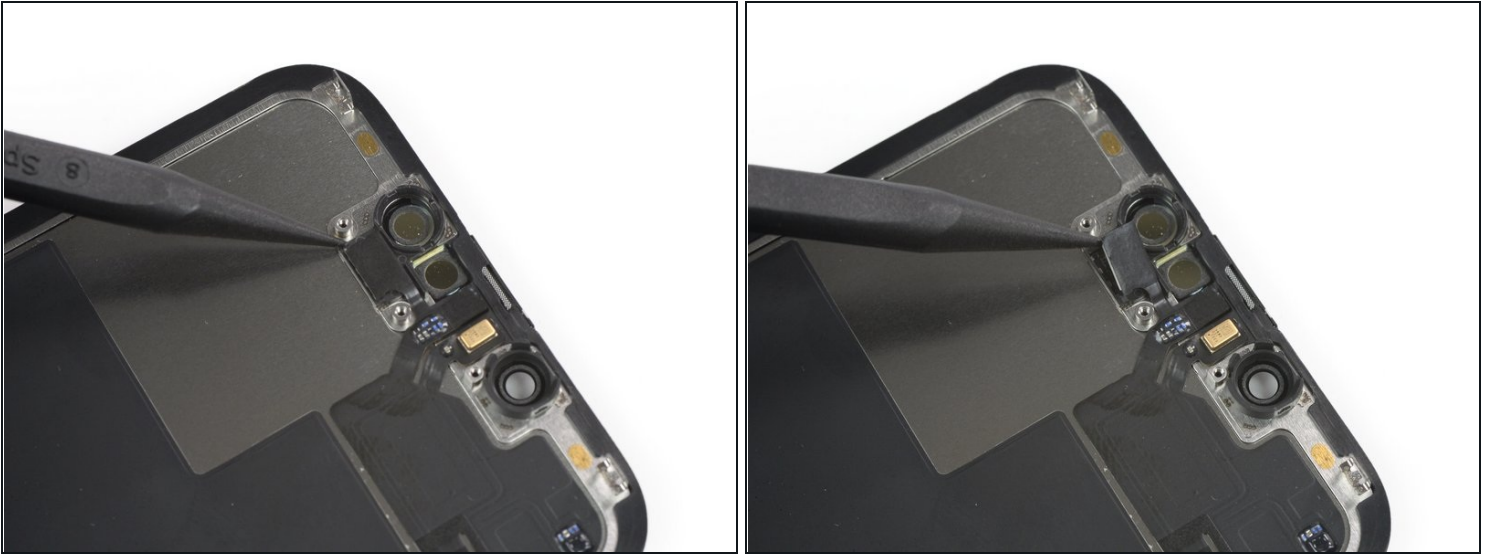
- Use a pair of blunt nose tweezers to remove the metal cover.

Step 28 — Heat up the top edge of the display



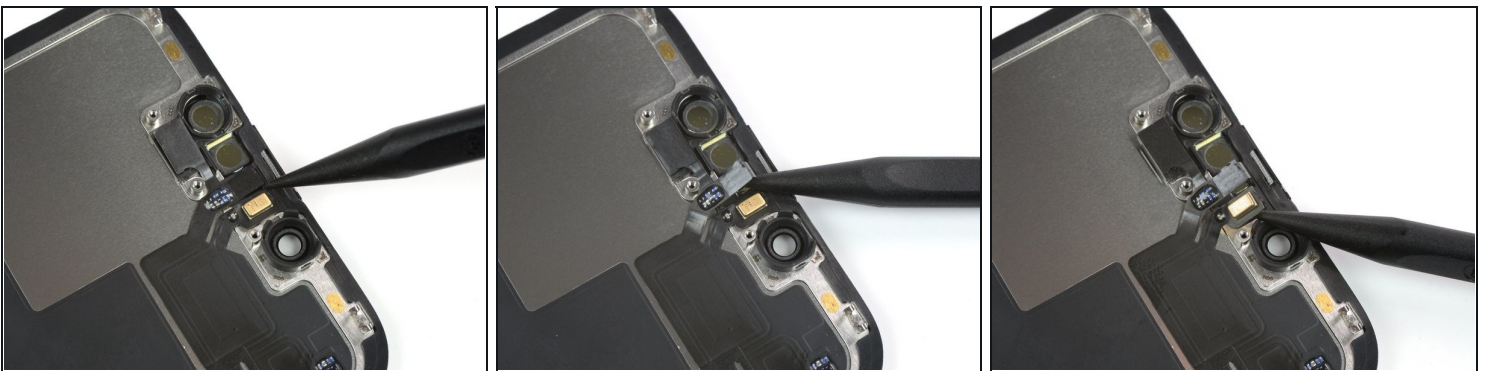
- Use a hairdryer or heat gun or [prepare an iOpener](#) and apply it to the top front of the display for 1-2 minutes, in order to soften the adhesive securing the sensors.

Step 29 — Separate the ambient light sensor



- Use the pointed end of a spudger to pry the ambient light sensor out of its recess.
⚠ Take care not to damage the light sensor ribbon cables while prying.

Step 30



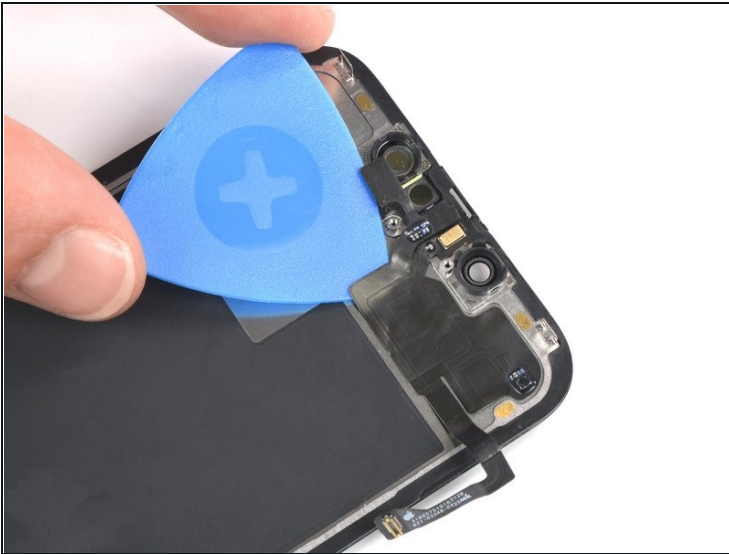
- Use the pointed end of a spudger to pry the proximity sensor and the microphone out of their recesses.

Step 31



- Use a hairdryer or heat gun or [prepare an iOpener](#) and apply it again to the top front of the display for 1-2 minutes, in order to soften the adhesive securing the sensors.

Step 32



- Carefully slide an opening pick underneath the front sensor assembly cable to loosen the adhesive.

Step 33



- Remove the front sensor assembly.
- ☑ During reassembly, check the position of the sensors and the microphone. Avoid obstructing them with any adhesive.

Compare your new replacement part to the original part—you may need to transfer remaining components or remove adhesive backings from the new part before installing.

To reassemble your device, follow the above steps in reverse order. Apply new adhesive where necessary after cleaning the relevant areas with isopropyl alcohol (>90%).

Take your e-waste to an [R2 or e-Stewards certified recycler](#).

Repair didn't go as planned? Check out our [iPhone 13 mini Answers community](#) for troubleshooting help.