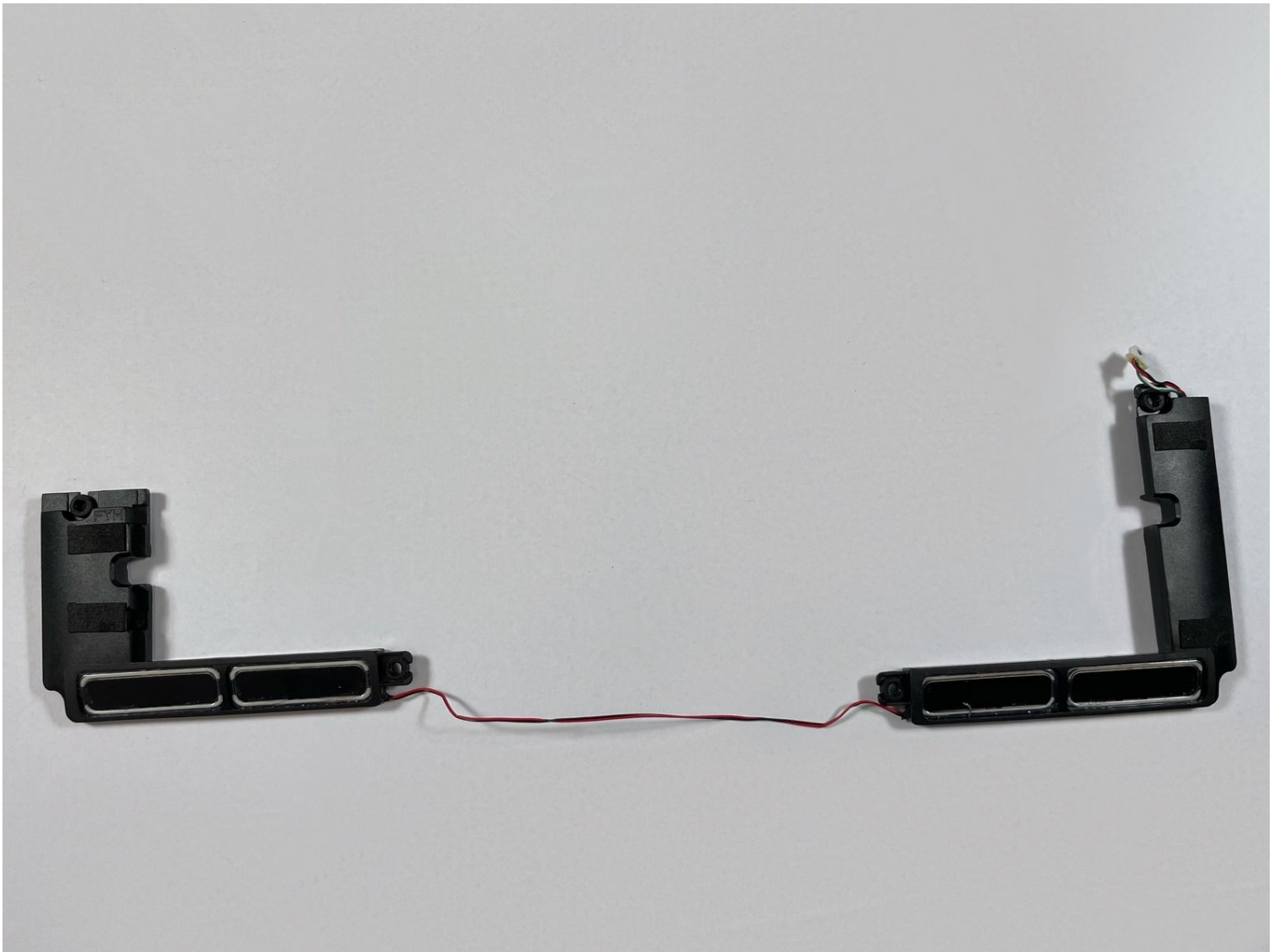




# HP EliteBook 1040 G4 Speakers Replacement

Use this guide to replace the speakers on the...

Written By: Hannah DiMartino



## INTRODUCTION

Use this guide to replace the speakers on the HP Elitebook 1040 G4. Speakers are essential for generating and providing sound to a computer. If you are experiencing problems with your computers audio, whether it be slight or total loss of sound, you most likely need to repair or replace your speakers. Although the speakers can be replaced without removing the battery, we advise removing the battery before you begin to ensure safety and avoid any electrical issues.

To complete this guide, you will need a #T5 Torx head screwdriver and a Phillips #1 and #00 screwdriver.

Before beginning, be sure to completely power off your computer.

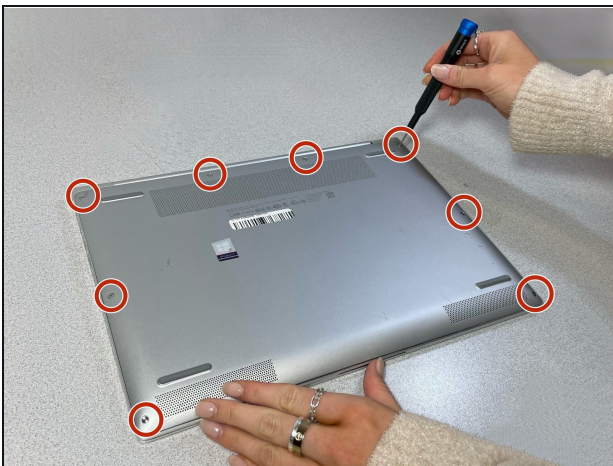
### TOOLS:

T5 Torx Screwdriver (1)

Phillips #00 Screwdriver (1)

Phillips #1 Screwdriver (1)

## Step 1 — Back Cover



- Use a T5 Torx screwdriver to remove the eight 5 mm screws securing the back cover to the chassis.

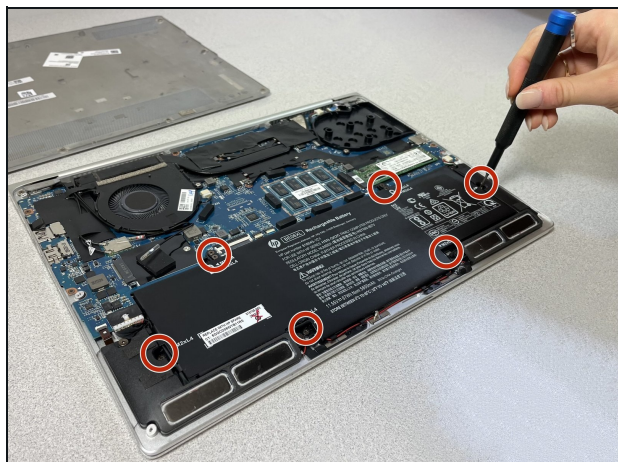
## Step 2



- Lift the back cover up and off the device.

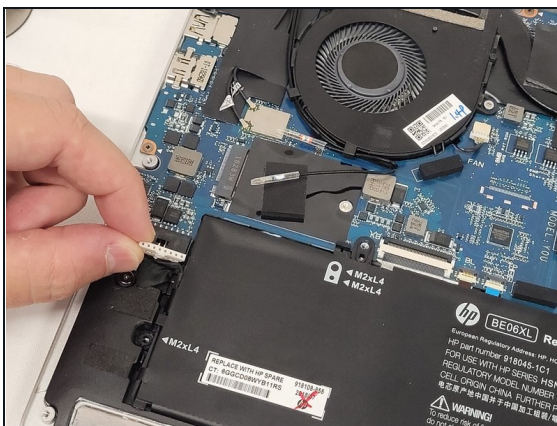
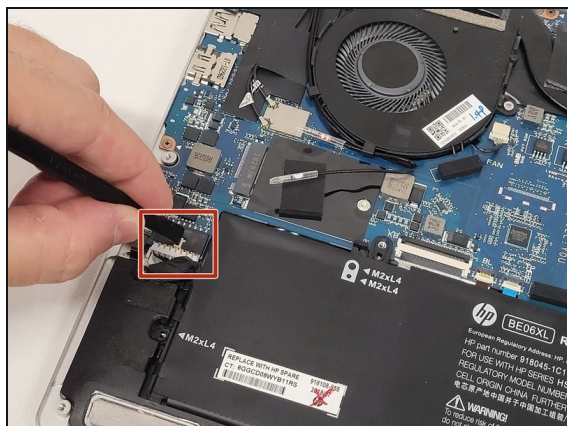


### Step 3 — Battery



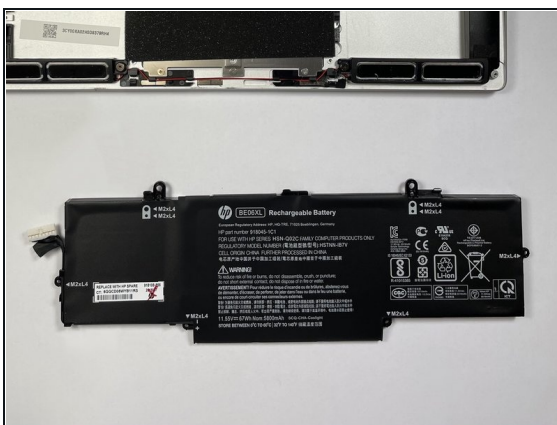
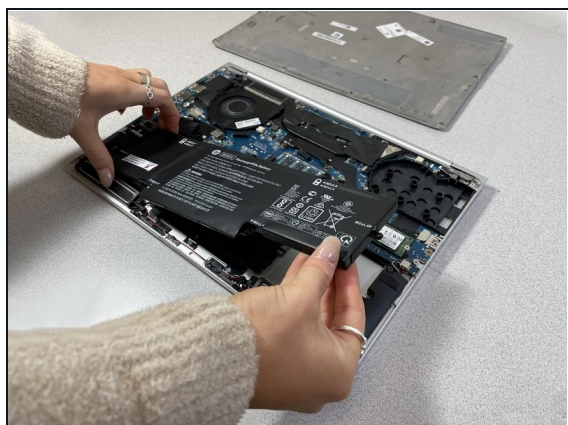
- Use a Phillips #00 screwdriver to remove the eight 4 mm screws securing the battery to the motherboard.

### Step 4



- Use a plastic spudger to carefully disconnect the battery pin connector from its port, slowly lifting the pin connector from each side until it releases.

### Step 5



- Lift and remove the battery from the device.

## Step 6 — Speakers



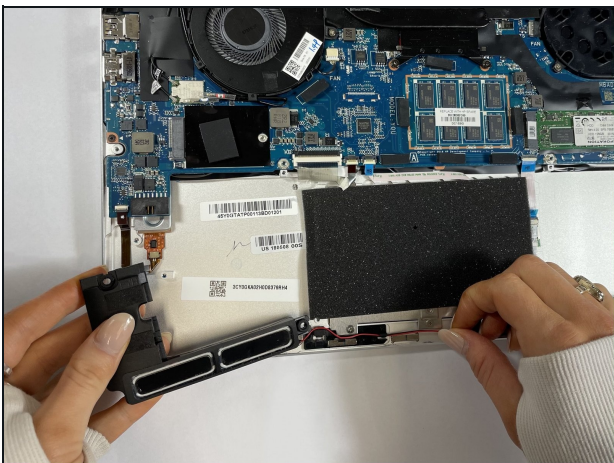
- Using the Phillips #1 screwdriver, remove the four black 6 mm screws securing the speakers to the device.

## Step 7



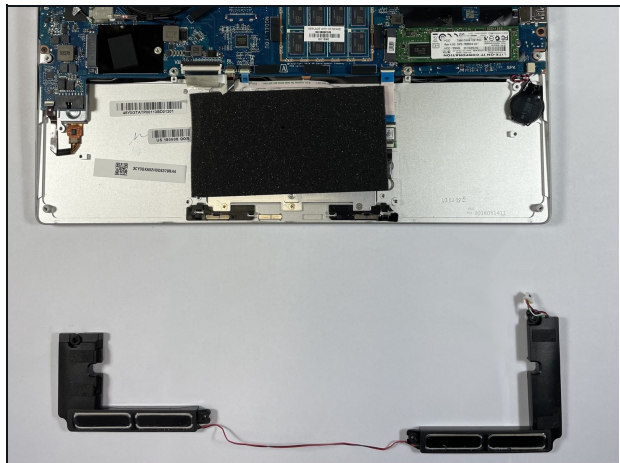
- Disconnect the pin connector from the right side of the speaker assembly.

## Step 8



- Carefully remove the red and black wires from the black clips in between the two speakers.

## Step 9



- Remove the speakers from the device.

To reassemble your device, follow these instructions in reverse order.