



# 2010-2017 Suzuki Swift Rear Springs Replacement

This guide will show you how to replace the rear wheel springs.

Written By: knipwim



## INTRODUCTION

The factory springs can be replaced for several reasons, they might be broken or uneven from years of uneven load. You can also replace the factory springs with higher or lower ones.



### TOOLS:

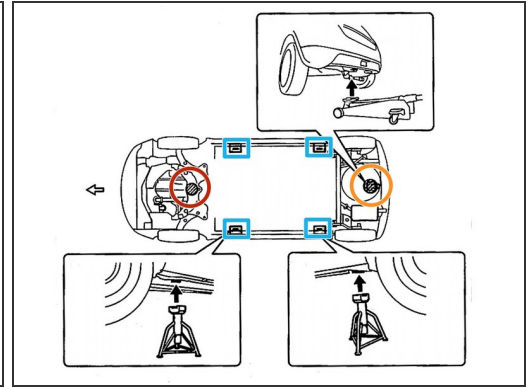
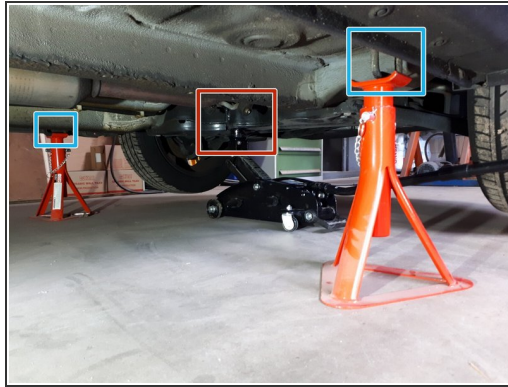
- [Hydraulic Floor Jack](#) (1)
- [Jack Stands](#) (1)
- [Torque Wrench](#) (1)
- [1/2" Drive Ratchet](#) (1)
- [17mm Socket](#) (1)
- [Crowbar](#) (1)
- [Threadlocker](#) (1)



### PARTS:

- [Coil Spring](#) (2)
- rear axle

## Step 1 — jack up your car



**⚠ CAUTION: THIS PROCESS IS POTENTIALLY DANGEROUS.** Be aware of your surroundings and do not go underneath your vehicle until this step is completed.

**⚠** Make sure the handbrake is on, and the gear is in **reverse** for manual or **park** for an automatic transmission car.

**⚠** Follow the safety instructions of the jack stand and jack.

**i** Refer to [this guide](#) for more detailed information on how to jack up a car.

- Put the jack under the rear frame hook and jack up the back of the car until the jack stands can be put under the jack supports.
- Put jack stands under the rear jack supports. Slowly lower the weight of the car onto them by lowering the jack.
- Put the jack under the front sub frame and jack up the front of the car until the jack stands can be put under the jack supports.
- Put jack stands under the front jack supports. Slowly lower the weight of the car onto them by lowering the jack.



## Step 2 — remove the tire



- Using the 17mm socket, unbolt the wheel nuts and remove the tire from the hub.

## Step 3 — detach shock absorber



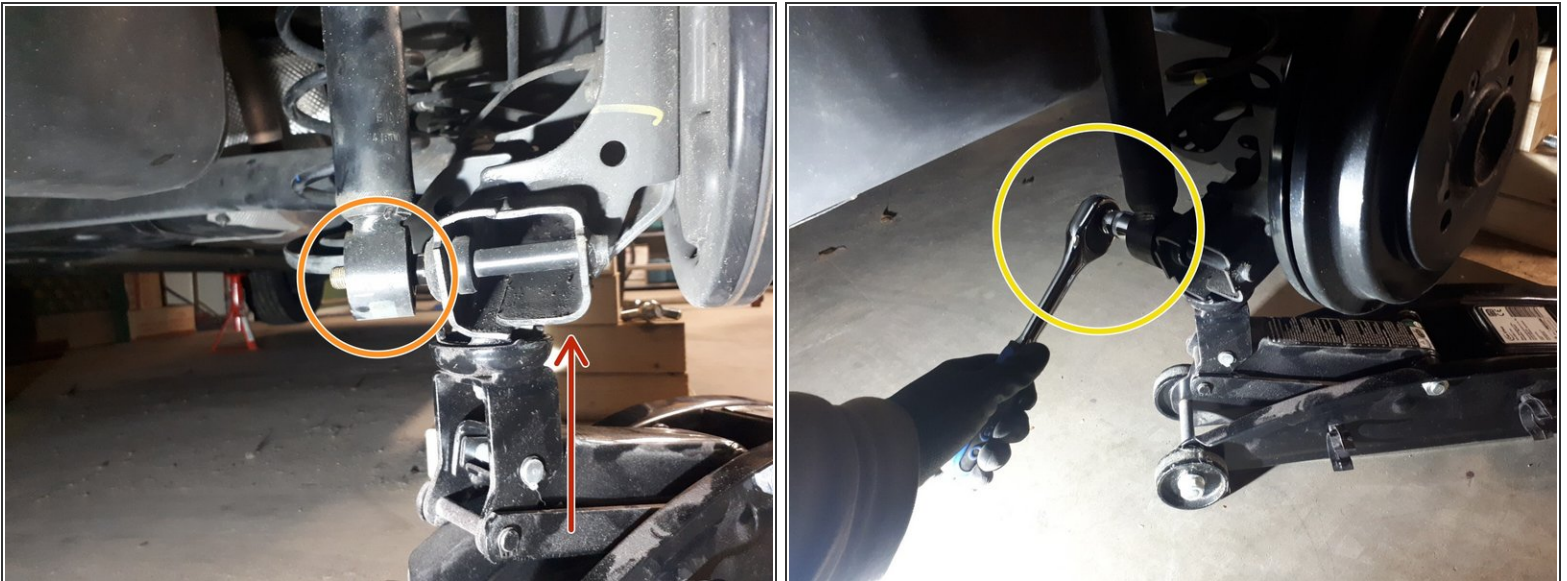
- Put the jack under the wheel arm and let the jack bear the weight of the arm but not lift the arm.
- Using the 17mm socket, unscrew the nut attaching the bottom of the shock absorber to the wheel arm.
- Push the shock absorber towards the car to slide the bottom from the bolt.
- Drop the jack holding the wheel arm to unload the spring.

## Step 4 — replace the spring



- Using the crowbar, lift the bottom of the spring out while pushing down on the wheel hub.
- Add the new spring from below. Push down on the wheel hub to ensure clearance at the bottom of the spring.
- Ensure the bottom end of the spring aligns with the bulge on the rubber.

## Step 5 — attach shock absorber



- With the jack, push up the wheel arm until the shock absorber aligns with the wheel arm bolt.
- Slide the shock absorber back on.
- Apply threadlocker, put the washer and the nut back on and tighten to 90 N·m.



## Step 6 — attach tire



- Place the tire flat against the wheel hub and make sure the hub holes line up with the rim holes.
- With the 17mm socket, screw the wheelnuts back in. Tighten to 85 N·m.

To replace the other rear spring, repeat the process on the other side of the car. When you're finished, lower the car with the jack.