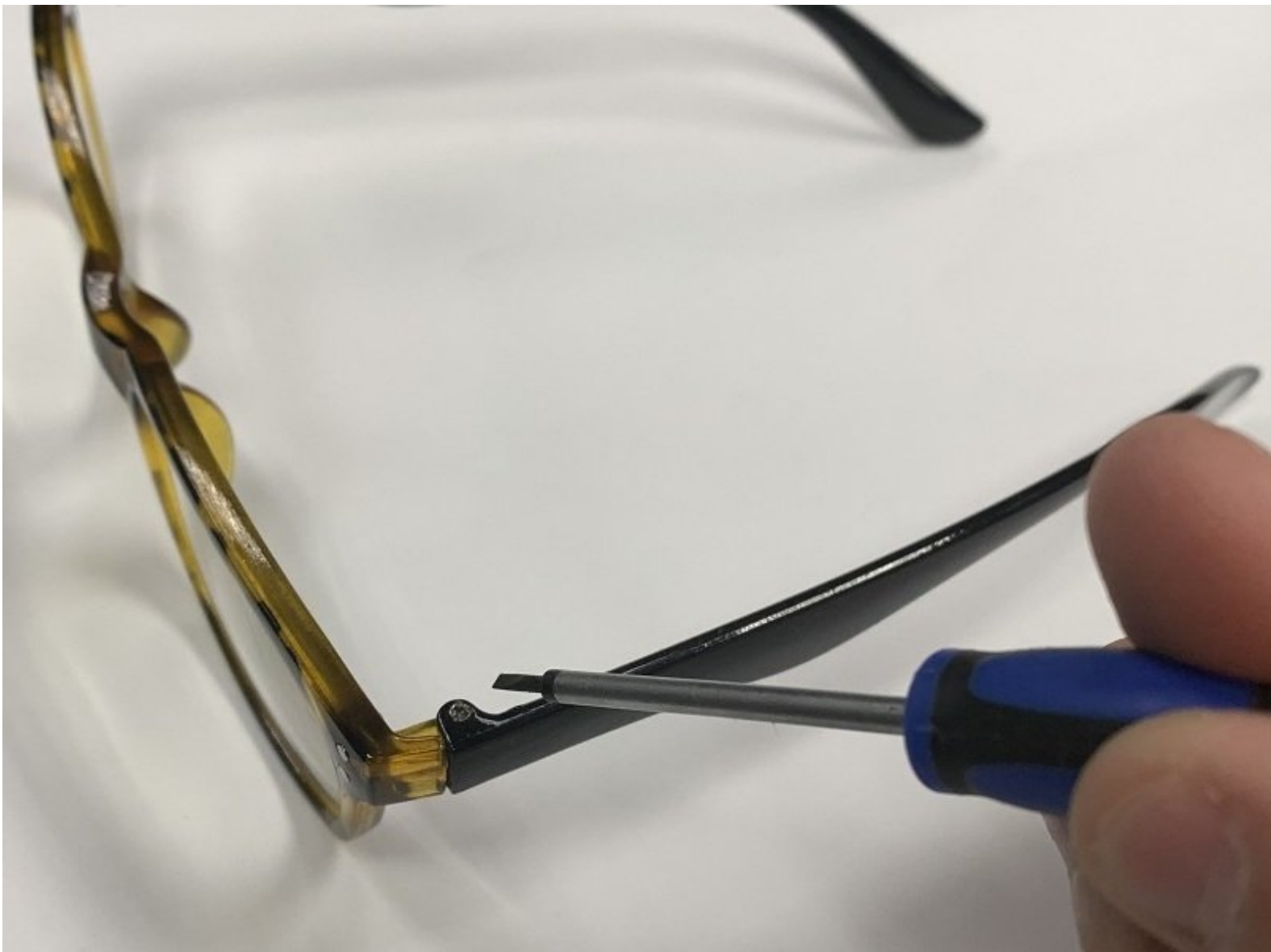




How to Fix Loose Temples on Plastic Framed Reading Glasses

This guide will show you our process and procedure for fixing loose temples on plastic reading glasses.

Written By: John



INTRODUCTION

Loosened or stripped screws can cause the temples of eyeglasses to become loose. This can occur for a multitude of reasons:

- Due to a person's face changing.
- Due to wear and tear.
- Due to taking them on and off every day.

This document will detail how to find a loose screw and replace it using the recommended tool kit.



TOOLS:

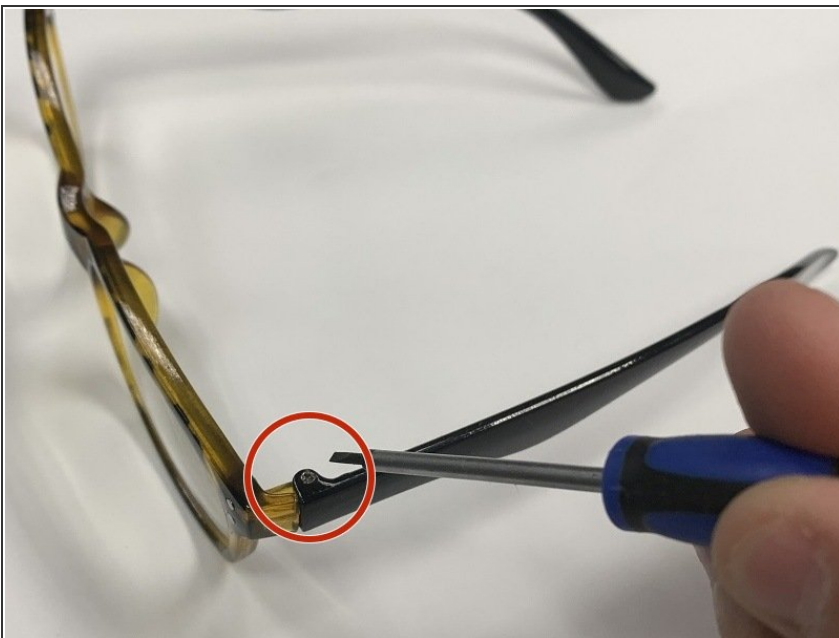
- [Eyeglass Repair Tool Kit, Kingsdun Glasses Precision Screwdriver Set with Eyeglass Screws Kit and Curved Tweezer in Assorted Size for Eyeglass, Sunglass, Spectacles & Watch Repair \(1\)](#)
-

Step 1 — How to Fix Loose Temples on Plastic Framed Reading Glasses



- Fold the temples of the glasses inwards to feel which arm has less resistance.

Step 2



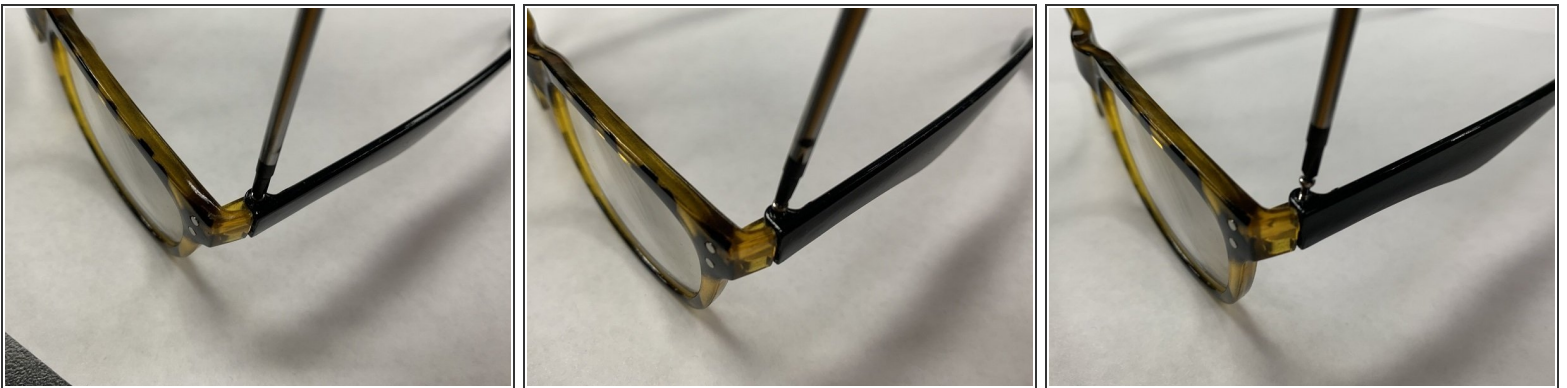
- Locate the hinge screw on the arm that had less give.
- ⓘ The steps to replace the screw will be the exact same for both hinges.

Step 3



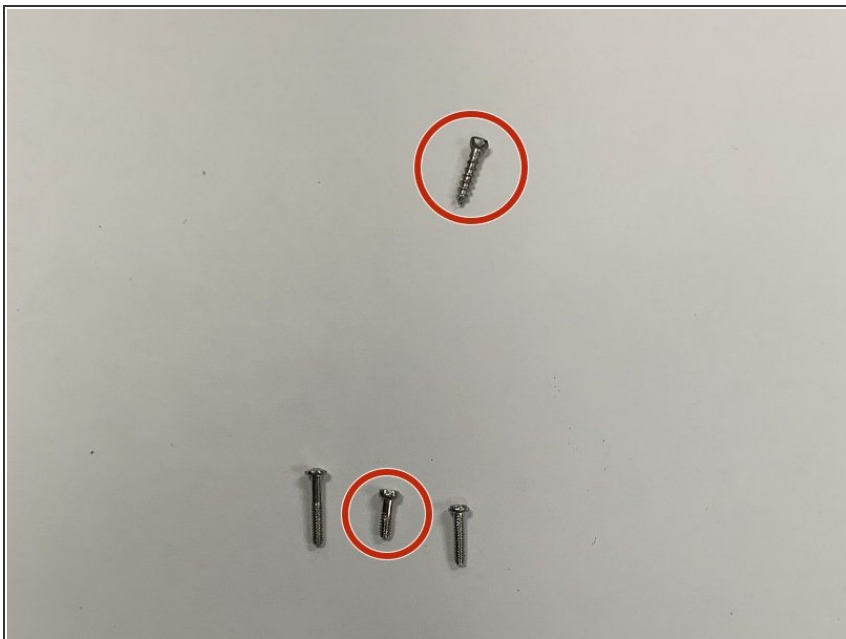
- Test each screwdriver until the correct fit is found.
- ① You may have to test every screwdriver to find the correct fit.
- ① The screwdriver that we used was the #2 mm screwdriver.

Step 4



- Insert the correct screwdriver into the screw and gently apply pressure.
- Turn the screwdriver counterclockwise to unscrew the screw.

Step 5



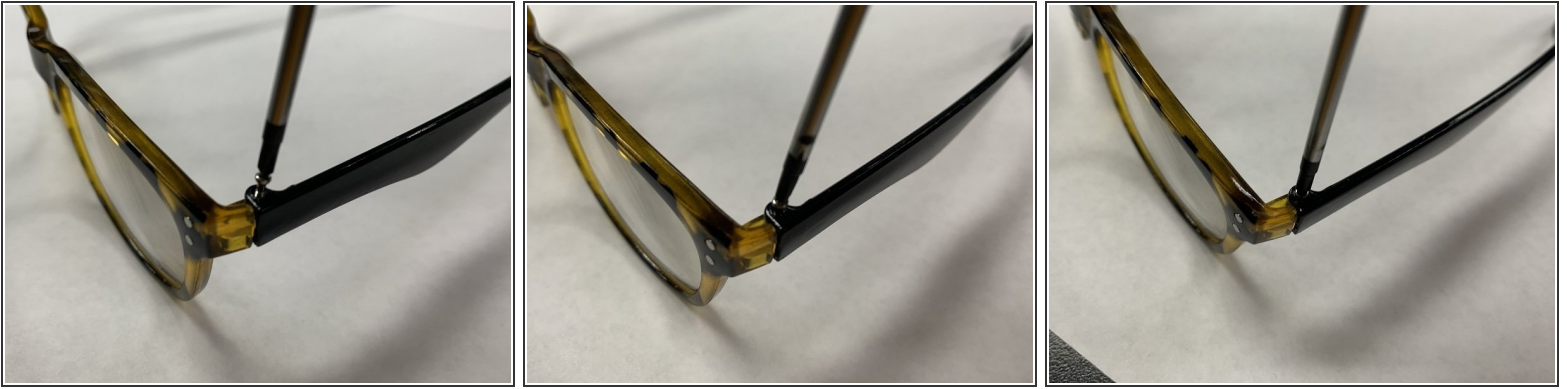
- Match the screw from the screwdriver kit.
- ⓘ Individually insert each screw into the eyeglasses. Different glasses use different screws.

Step 6



- Insert the correct screwdriver into the screw.

Step 7



- Turn the screwdriver clockwise to tighten.
- ⓘ Tighten the screw until you feel a slight resistance.
- ⓘ Do not over-tighten the screw.