



Microsoft Surface Pro 6 MicroSD Card Reader Replacement

Use this guide to remove or replace the microSD...

Written By: Adam O'Camb



INTRODUCTION

Use this guide to remove or replace the microSD card reader in a Microsoft Surface Pro 6.

Applying new thermal paste to the CPU during reassembly may improve the performance of your Surface. If you wish to do that, make sure you have new thermal paste and either high-concentration isopropyl alcohol or a specialized thermal paste cleaner.

There is a significant chance that you may break the unreinforced and fragile display panel during this procedure. Be sure to apply plenty of heat and be extremely careful during the prying stage.



TOOLS:

[T3 Torx Screwdriver](#) (1)
[iOpener](#) (1)
[iFixit Opening Picks \(Set of 6\)](#) (1)
[Spudger](#) (1)
[Tweezers](#) (1)
[T5 Torx Screwdriver](#) (1)



PARTS:

[Surface Pro 5/6 Adhesive Strips](#) (1)

Step 1 — Heat the screen

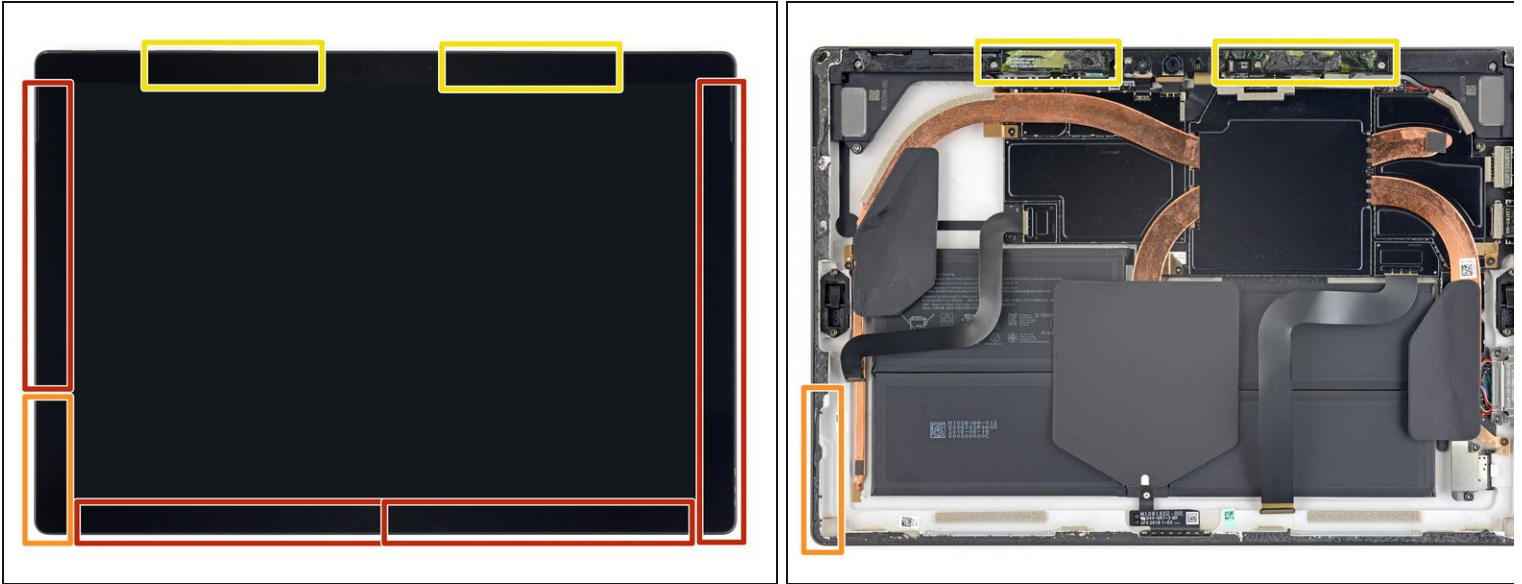


⚠ Completely power off the Surface before you begin disassembly.

- If the screen's glass is cracked, keep further breakage contained and prevent bodily harm during your repair by [taping over the glass](#). Lay overlapping strips of clear packing tape over the display until all the glass is covered. Wear safety glasses to protect your eyes.
 - [Heat an iOpener](#) and apply it to the right edge of the Surface's screen for two minutes.
- i** You may need to reheat and reapply the iOpener several times to get the Surface warm enough. Follow the iOpener instructions to avoid overheating.

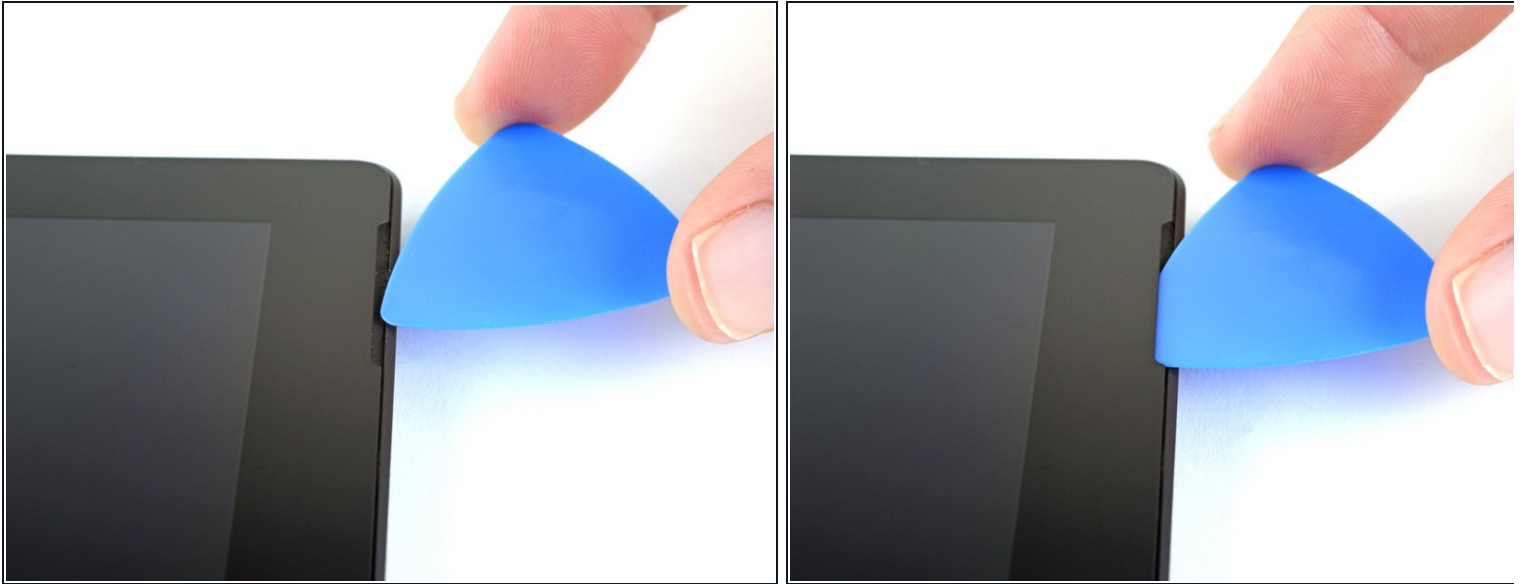
⚠ A hair dryer, heat gun, or hot plate may also be used for more heat, but be careful not to overheat the Surface—the screen and internal battery are susceptible to heat damage.

Step 2 — Take note of the adhesive layout



- Take note of the screen adhesive layout before continuing:
 - These areas only contain adhesive and are safe to cut.
 - The display board and flex cables sit here close to the edge. Cut very carefully and do not insert the pick as deep under the display.
 - Fragile antenna cables lie under this part of the screen. Carefully follow the procedure to avoid damaging them. The adhesive is also the thickest here.

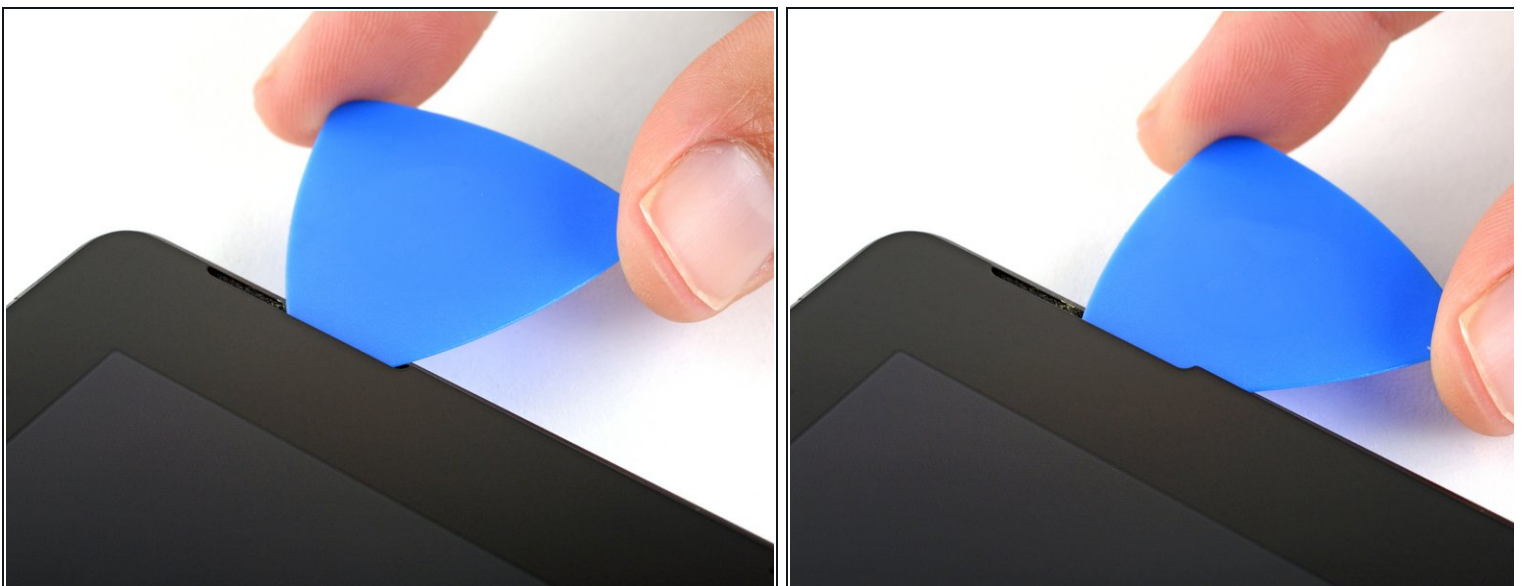
Step 3 — Insert an opening pick into the speaker opening



- Insert an opening pick into the speaker opening on the screen and slide the pick under the glass. Do not press the pick into the speaker grille, as the grille is easily torn.

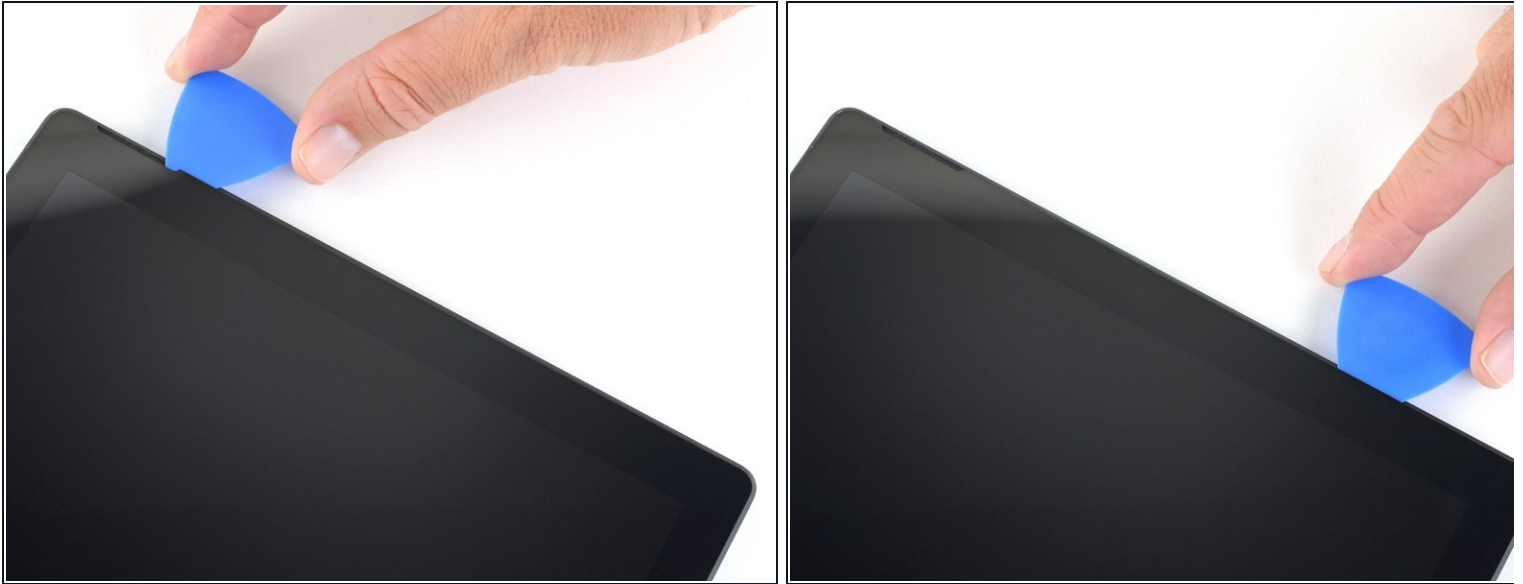
⚠ Don't insert the opening pick any deeper than the black bezel on the side of the screen. Inserting the pick too far may damage the LCD.

Step 4 — Slide an opening pick under the screen



- Rotate the pick toward the bottom of the Surface to slide it underneath the lower edge of the speaker cutout.

Step 5 — Cut through the screen adhesive



- Slide the pick down the right edge of the Surface to slice through the adhesive under the screen.
- ⚠ Throughout the rest of the procedure, if you encounter significant resistance while sliding the pick, stop and reheat the section you're working on. Applying too much pressure with the pick can crack the glass.
- Leave this opening pick in the right edge to prevent the adhesive from resealing.

Step 6



- Reheat the iOpener and apply it to the bottom edge of the Surface's screen for two minutes.
- ⓘ You may need to reheat and reapply the iOpener several times to get the Surface warm enough. Follow the iOpener instructions to avoid overheating.

⚠ A hair dryer, heat gun, or hot plate may also be used for more heat, but be careful not to overheat the Surface—the screen and internal battery are susceptible to heat damage.

Step 7



- Insert a new opening pick into the bottom right corner and slide it around the corner toward the bottom edge.
- ⚠ Don't insert the opening pick any deeper than the black bezel on the side of the screen. Inserting the pick too far may damage the LCD.
- Slide the pick along the bottom edge of the Surface to cut through the screen adhesive.
- Leave this pick in the bottom edge to prevent the adhesive from resealing.

Step 8



- Reheat the iOpener and apply it to the left edge of the Surface's screen for two minutes.
 - ⓘ You may need to reheat and reapply the iOpener several times to get the Surface warm enough. Follow the iOpener instructions to avoid overheating.
- ⚠ A hair dryer, heat gun, or hot plate may also be used for more heat, but be careful not to overheat the Surface—the screen and internal battery are susceptible to heat damage.

Step 9



- Insert a new opening pick into the bottom left corner and slide it around the corner toward the left edge.
 - ⚠ Take care cutting under the lower 2.5 inches (65 mm) of the left edge. Do not insert the opening pick more than 1/8 inches (3 mm) here. The display cables sit near this part of the bezel and are easily damaged. Once past the display cable area, do not insert the pick past the bezel.
- Slide the pick along the left edge of the Surface to cut through the screen adhesive.
- Leave this pick in the left edge to prevent the adhesive from resealing.

Step 10



- Reheat the iOpener and apply it to the top edge of the Surface's screen for two minutes.
- ⓘ The adhesive is thickest along this edge, and you may need to reheat and reapply the iOpener several times to get the Surface warm enough. Follow the iOpener instructions to avoid overheating.

⚠ A hair dryer, heat gun, or hot plate may also be used for more heat, but be careful not to overheat the Surface—the screen and internal battery are susceptible to heat damage.

Step 11



- Round the left corner with the opening pick and slide it along the top edge of the Surface. Stop when the pick is 2.75 inches (70 mm) away from the left edge.
- ⓘ The next 6 inches (15 cm) of the top edge of the case is covered by the left and right antennas, which sit between the case and the screen bezel. Follow the next steps carefully to avoid damaging the antennas.

Step 12



- Insert the point of a pick under the display where you just stopped cutting. Do not insert the pick deeper than the edge of the bezel.
- Carefully roll the pick to the right, pressing the long edge of the pick into the screen adhesive underneath the bezel, cutting the adhesive as you go. **Do not slide the pick along the edge of the Surface.**
- ① Keep the pick parallel to the screen throughout the whole procedure so that it doesn't catch on the antennas. Do not press the pick against the case.
- Repeat this motion of inserting the point of the pick where you just cut, and rolling to the right all along the top edge of the Surface, until the pick is 2.5 inches (64 mm) from the right edge of the Surface.

Step 13



- Once you cut the adhesive over the antennas (8.5 inches, or 22 cm, away from the left edge), slide the pick the rest of the way along the top edge of the surface and round the top right corner to slice through any remaining adhesive.

Step 14 — Open the Surface



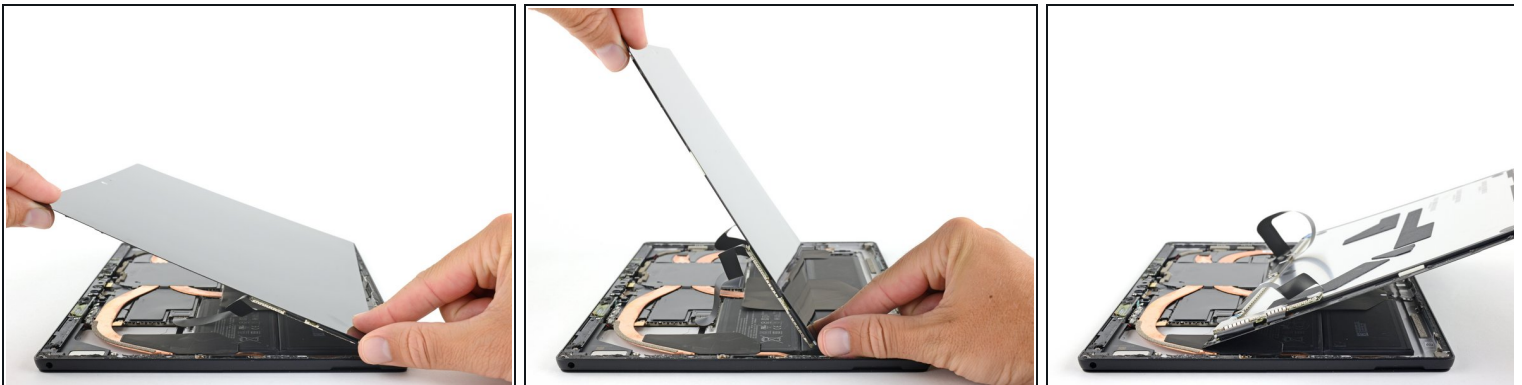
- Very slowly lift the screen assembly away from the Surface case. If you encounter any resistance, stop and check that all the adhesive is separated.

⚠ Do not remove the screen yet. It is still connected to the motherboard by two cables.

- Use an opening pick to cut through any remaining adhesive.

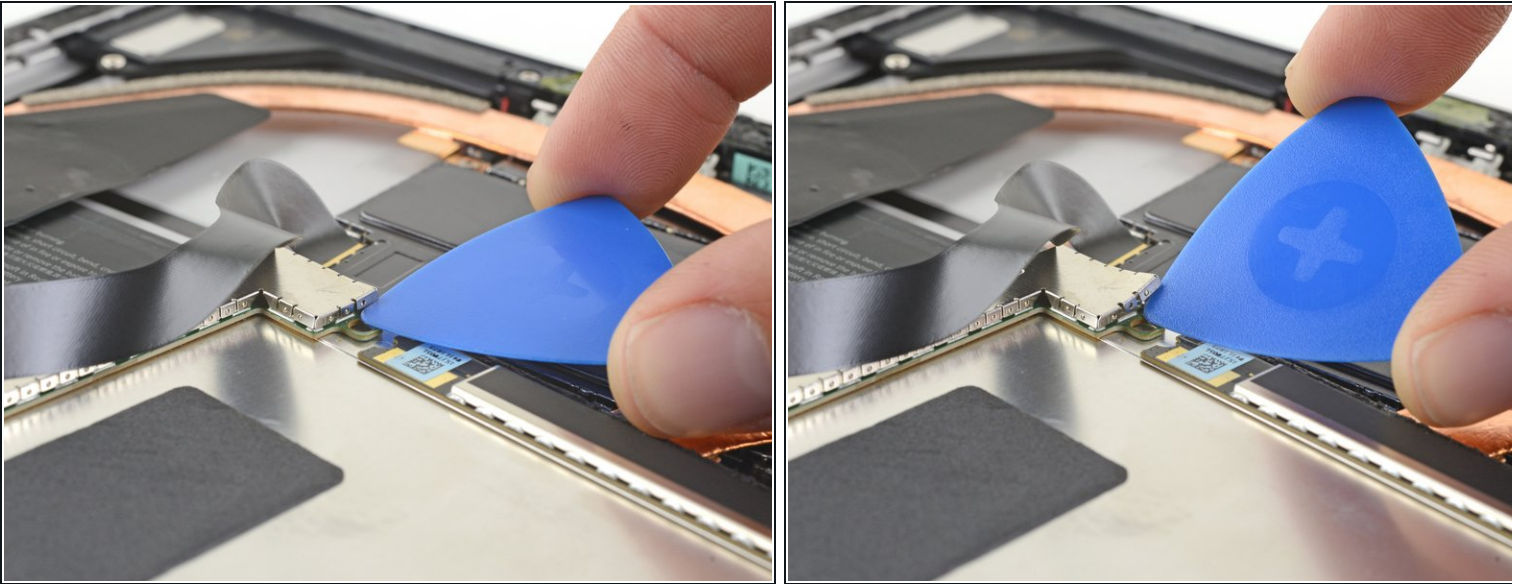
★ The flash lens may fall out of the Surface case. Keep track of the lens and return it to its cutout in the case during reassembly.

Step 15



- Lift the top of the screen assembly away from the case while sliding the bottom of the screen closer to the motherboard display connectors.
- Gently lay the screen down on the case with the connectors facing up. Take care to avoid creasing the display cables.

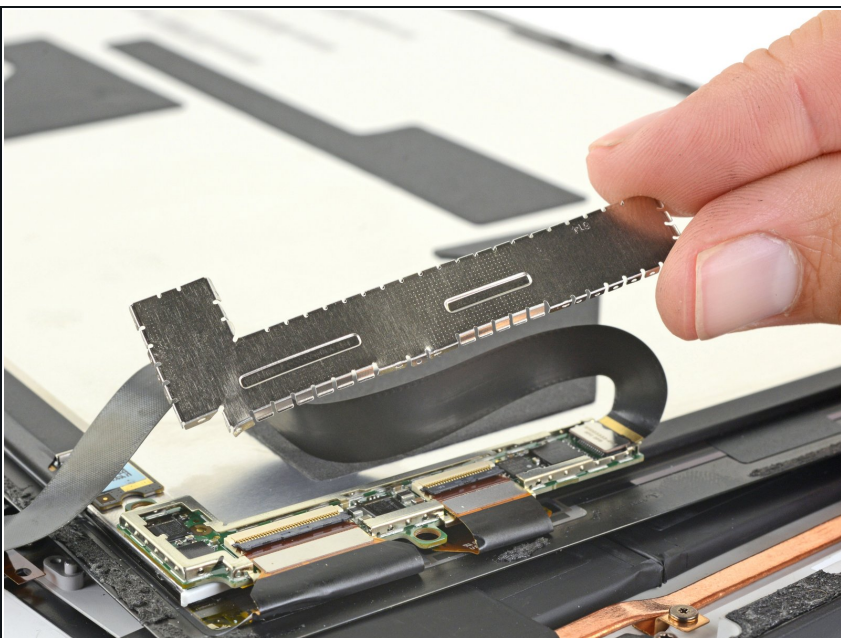
Step 16 — Disconnect the screen



- Use an opening pick to pry up one edge of the EMI shield covering the display board.
- Repeat this procedure at different points around the shield until it is free.

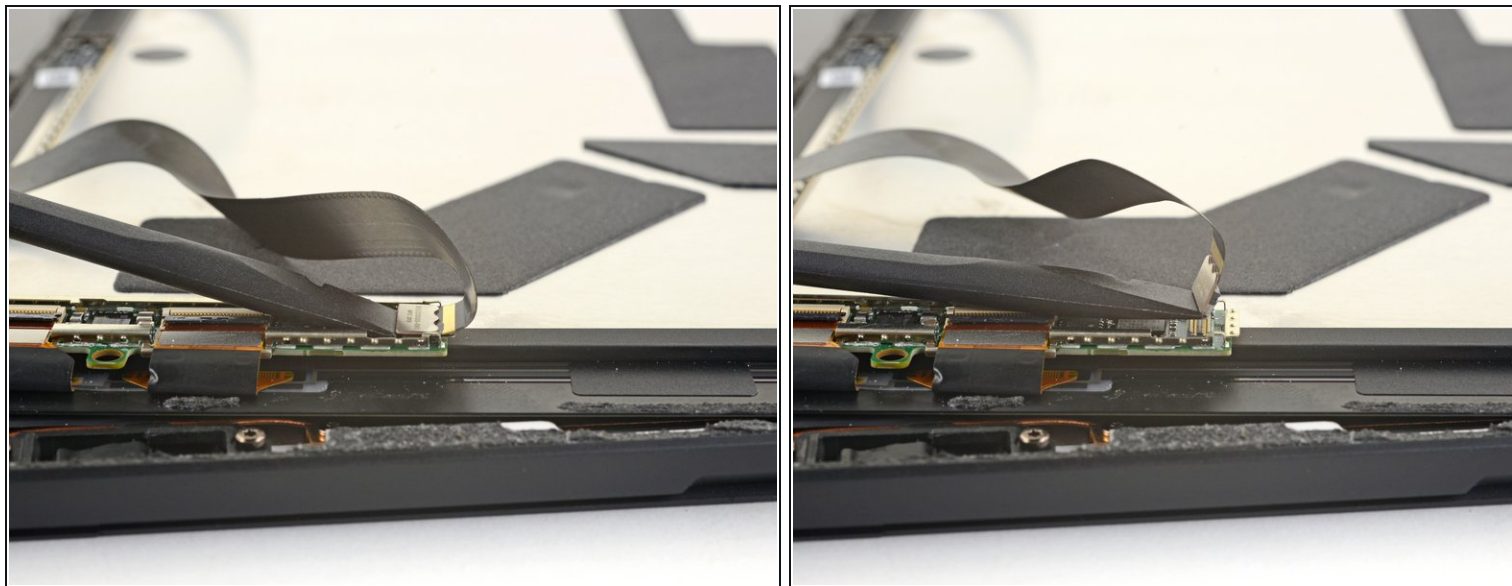
⚠ Try not to deform the shield too much—you will need to reinstall it during reassembly.

Step 17



- Lift the EMI shield away from the display board and remove it.

Step 18



- Use the flat end of a spudger to pry the display interconnect cable straight up and out of its socket on the board.

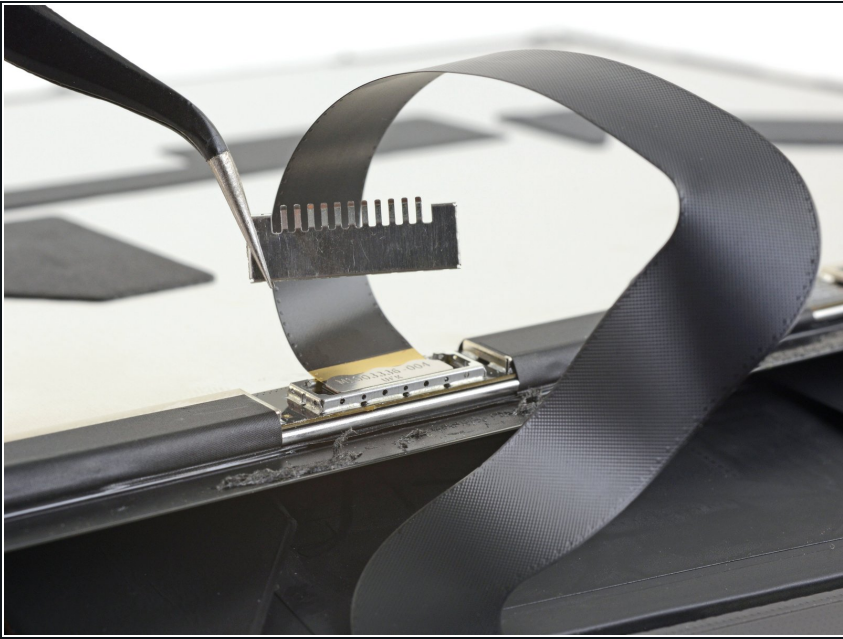
Step 19



- Insert one point of a pair of pointed tweezers into a gap in the edge of the EMI shield covering the digitizer connector.
- Use the tweezers to pry the EMI shield away from the display as much as you can without bending it.
- Repeat this procedure at different points around the shield until it is free. Remove the shield.

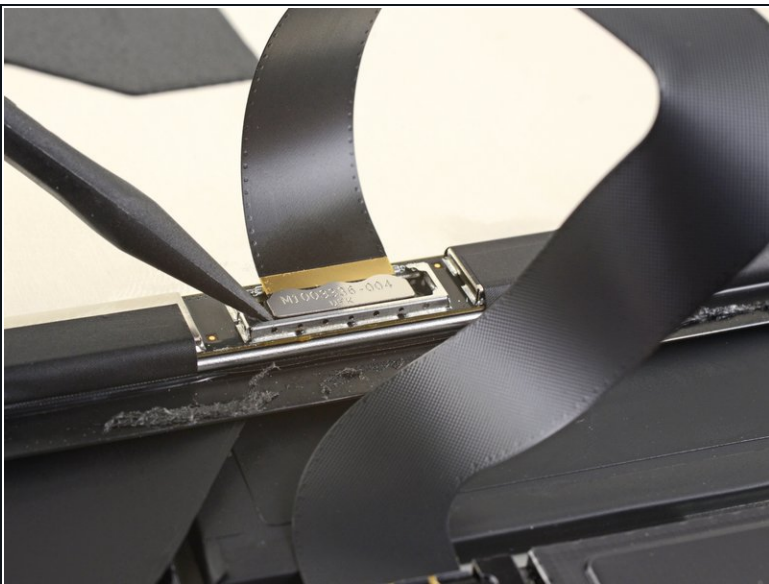
 Try not to deform the shield too much—you will need to reinstall it during reassembly.

Step 20



- Pull the rest of the shield off of the digitizer connector and remove it.

Step 21



- Use the tip of a spudger to pry the digitizer connector straight up and out of its socket on the screen.

Step 22



- Remove the screen assembly from the Surface.
- ✦ During reassembly, pause here and follow [this guide](#) to replace the screen adhesive.

Step 23 — Remove the heat sink shield



- Insert one point of a pair of pointed tweezers into a gap in the corner of the EMI shield covering the heat sink.
- Use the tweezers to pry the EMI shield away from the motherboard as much as you can without bending it. Do not remove it yet.

⚠ Try not to deform the shield too much—you will need to reinstall it during reassembly.

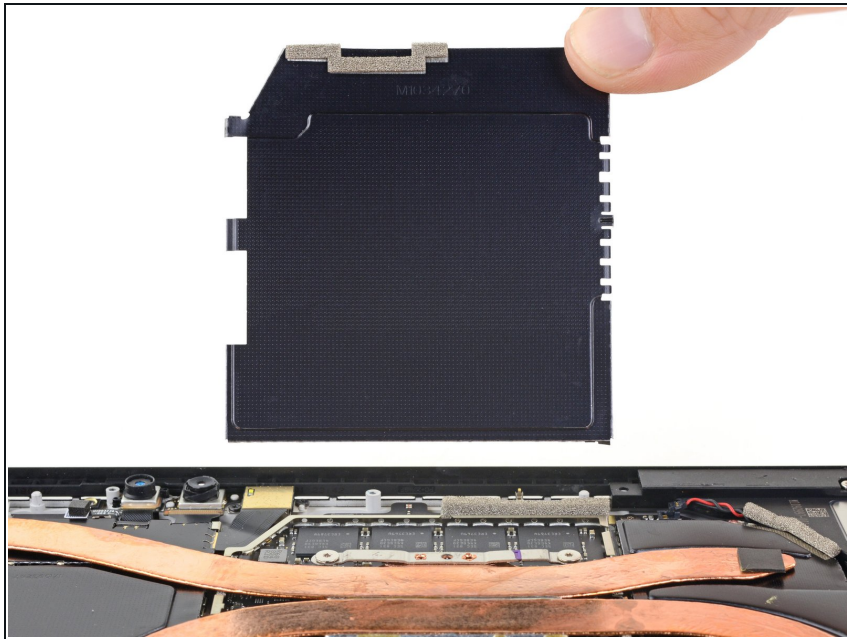
⚠ Take care not to puncture the battery with the tweezers while working on this shield.

Step 24



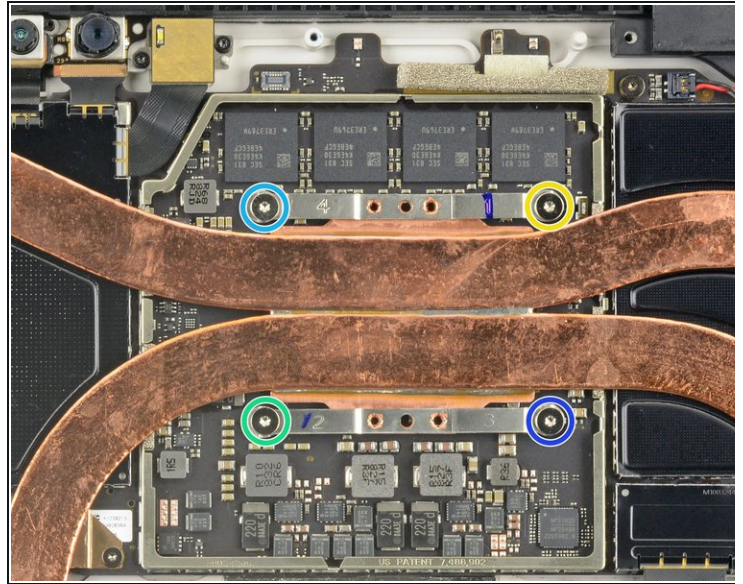
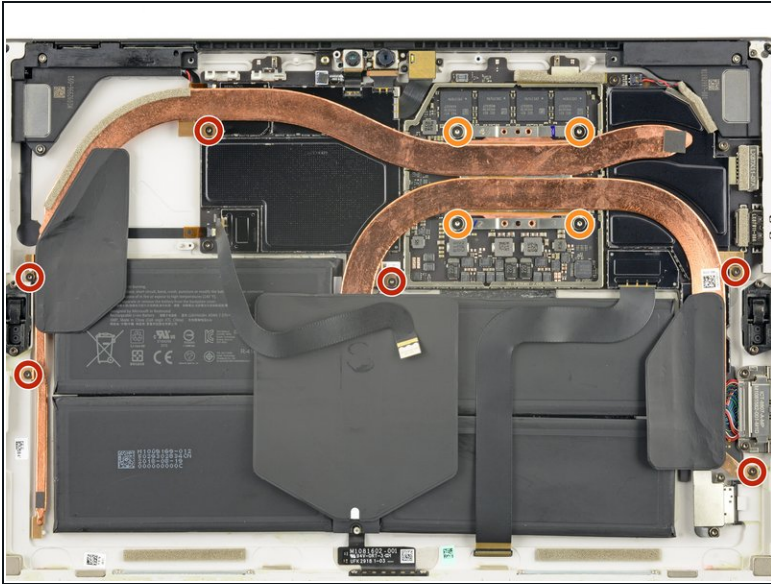
- Repeat the last step for each corner of the EMI shield covering the heat sink.

Step 25



- Remove the heat sink shield.

Step 26 — Remove the heat sink



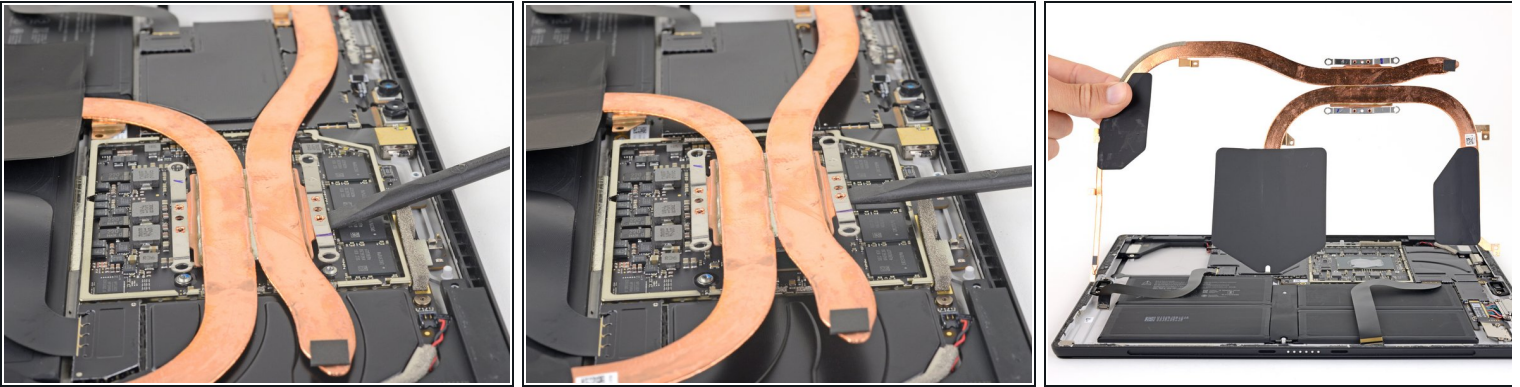
- Remove the ten Torx screws securing the heat sink:

- Six 2.6 mm-long T3 screws
- Four 3.3 mm-long T5 screws

☒ During reassembly, tighten the heat sink screws in the following criss-cross pattern, one turn at a time, until they're tight:

- Screw 1
- Screw 2
- Screw 3
- Screw 4

Step 27



- Use a spudger to gently pry the heat sink straight up and off of the CPU.

⚠ Take care not to dent or crease the heat sink pipes during removal.

- ★ During reassembly, make sure to [properly clean the heat sink and CPU, and apply new thermal paste.](#)

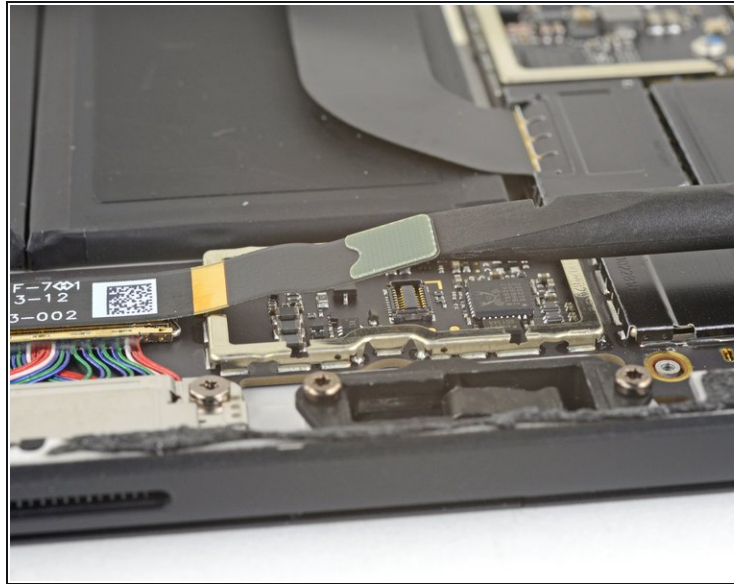
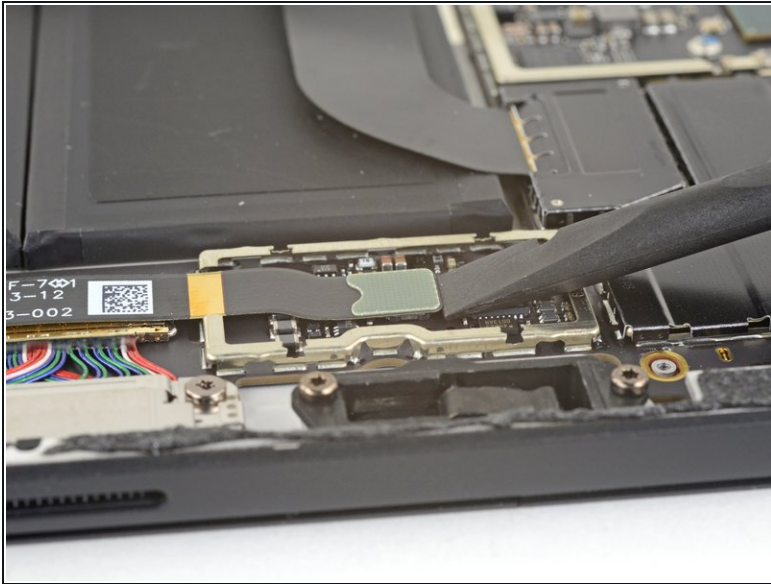
Step 28 — Disconnect the microSD card reader



- Insert one point of a pair of pointed tweezers into a gap in the corner of the EMI shield covering the microSD card reader connector.
- Use the tweezers to pry the EMI shield away from the motherboard as much as you can without bending it.
- Repeat this procedure at different points around the shield until it is free. Remove the shield.

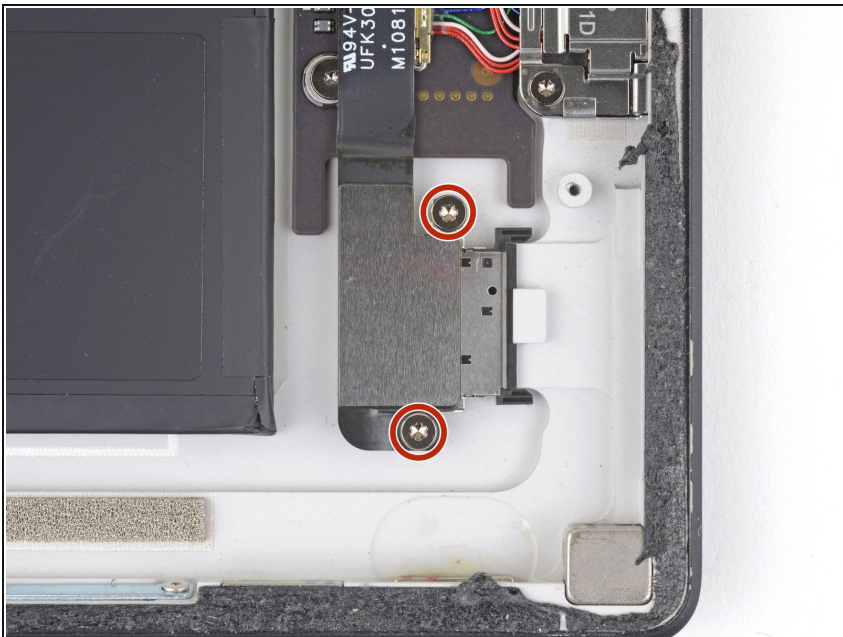
⚠ Try not to deform the shield too much—you will need to reinstall it during reassembly.

Step 29



- Use the flat end of a spudger to pry the microSD card reader connector up and out of its socket on the motherboard.

Step 30 — Remove the microSD card reader



- Use a T5 Torx driver to remove the two 3.1 mm screws securing the microSD card reader.

Step 31



- Remove the microSD card reader.

Compare your new replacement part to the original part—you may need to transfer remaining components or remove adhesive backings from the new part before installing.

To reassemble your device, follow the above steps in reverse order.

Take your e-waste to an [R2 or e-Stewards certified recycler](#).

Repair didn't go as planned? Try some [basic troubleshooting](#), or ask our [Answers community](#) for troubleshooting help.